

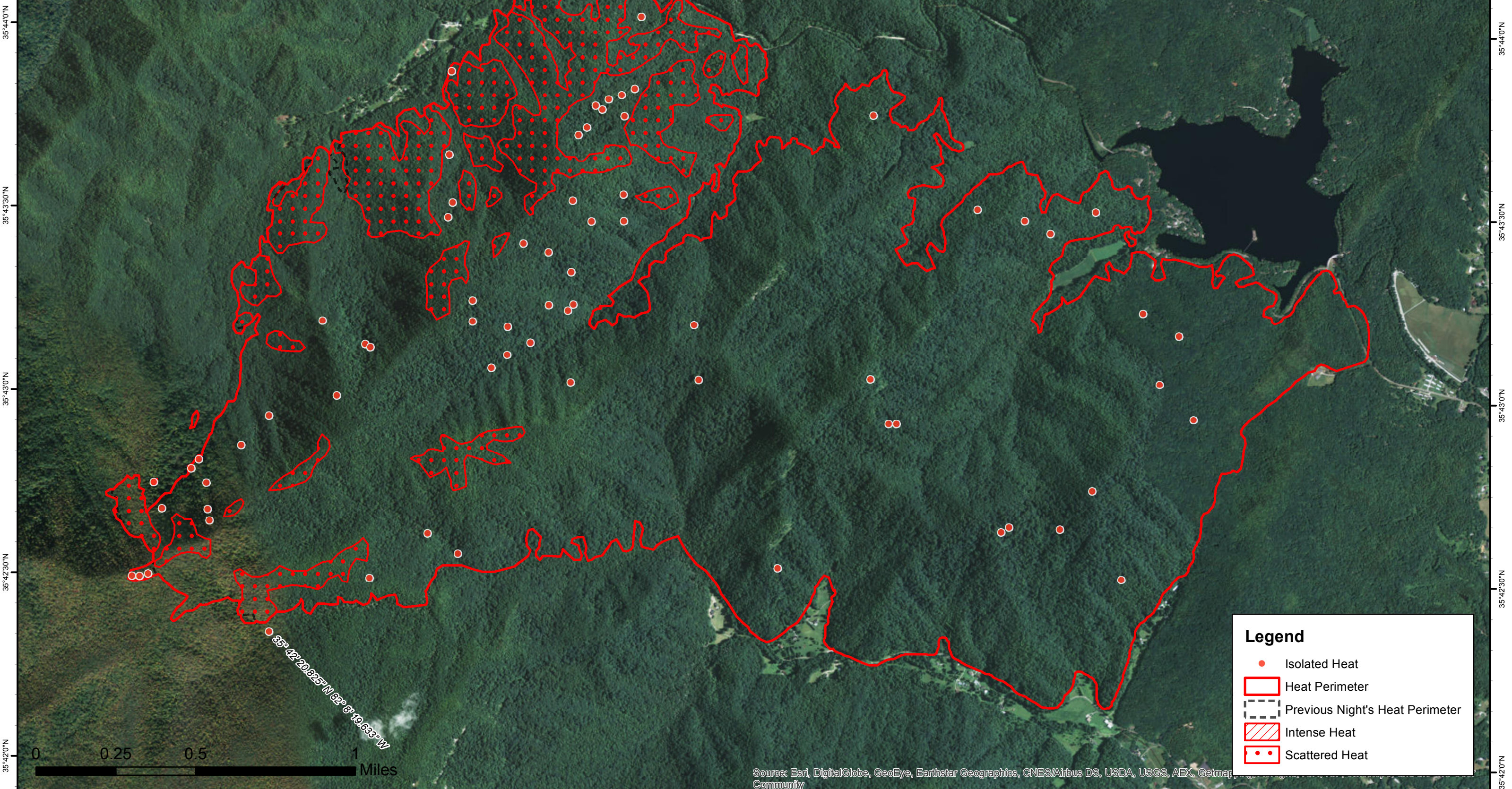


82°9'0"W 82°8'30"W 82°8'0"W 82°7'30"W 82°7'0"W 82°6'30"W 82°6'0"W 82°5'30"W 82°5'0"W 82°4'30"W

Clear Creek Incident
NC-NCS-160054
Infrared Map

Imagery Date: 11/28/2016 @ 0039hrs
 Interpreted Acres: 3,163 acres
 IRIN: Maximillian Wahlberg

Legend

- Isolated Heat
- Heat Perimeter
- Previous Night's Heat Perimeter
- Intense Heat
- Scattered Heat

82°9'0"W 82°8'30"W 82°8'0"W 82°7'30"W 82°7'0"W 82°6'30"W 82°6'0"W 82°5'30"W 82°5'0"W 82°4'30"W

Source: Esri, DigitalGlobe, GeoEye, Earthstar Geographics, CNES/Airbus DS, USDA, USGS, AEX, Getmap, Community