

83°14'W

Washington Creek Infrared Map

NC-ECA-000029

Map Date: 11/13/2016

Imagery Date: 11/12/2016

Imagery Time: 1935 MDT

IR Interpreted Acres: 180

IRIN: Elizabeth McNichols

● Isolated Heat Sources

□ Heat Perimeter

▨ Intense Heat

⊞ Scattered Heat

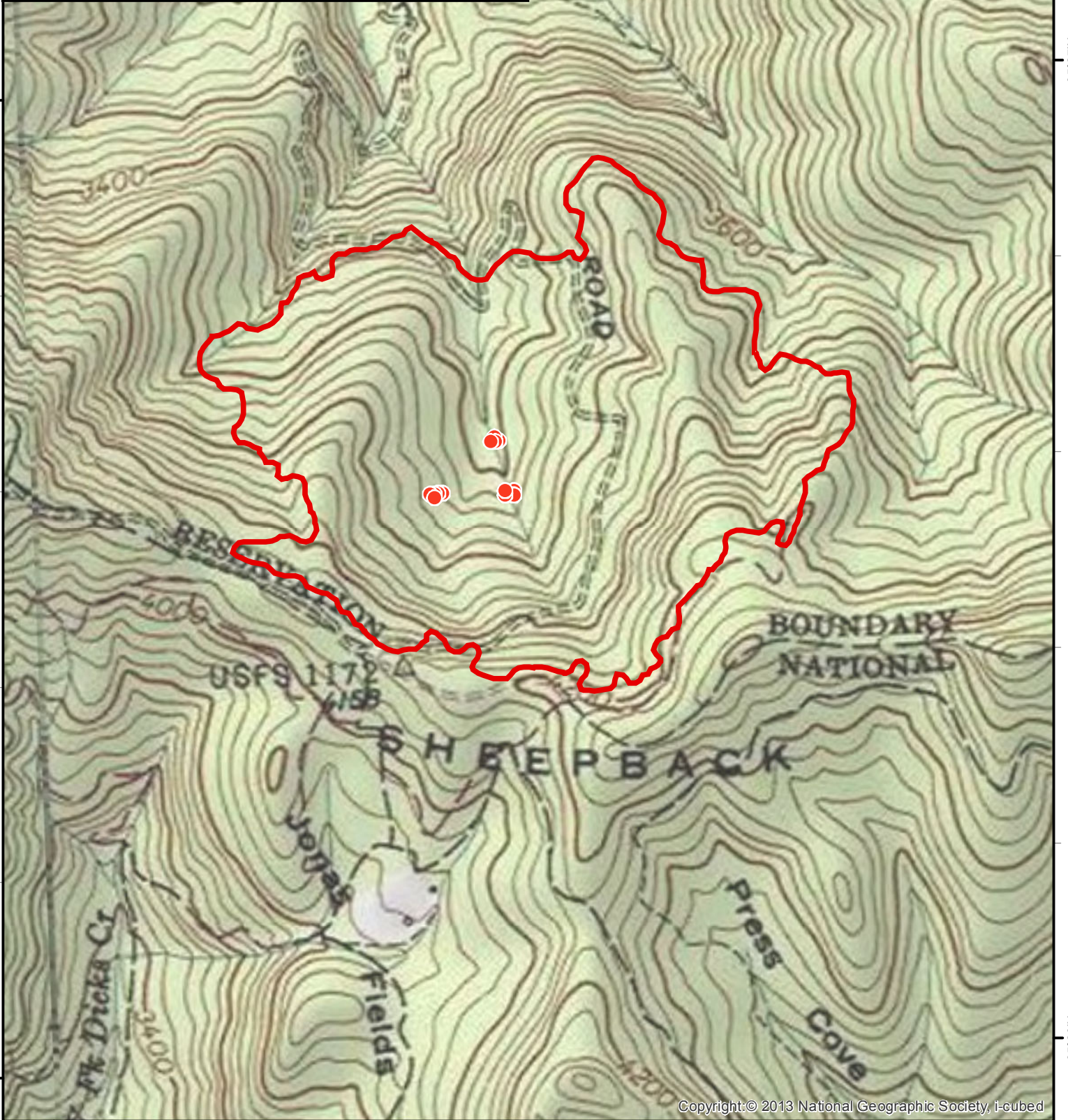


NAD 1983 UTM Zone 16N



35°27'N

35°27'N



35°26'N

35°26'N

83°15'W

83°14'W