

83°15'W

83°14'W

Washington Creek Infrared Map

NC-ECA-000029

Map Date: 11/15/2016

Imagery Date: 11/14/2016

Imagery Time: 2005 MDT (2205 EST)

IR Interpreted Acres: 180

IRIN: Tina Rotenbury

● Isolated Heat Sources

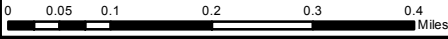
□ Heat Perimeter

▨ Intense Heat

⋯ Scattered Heat



NAD 1983 UTM Zone 16N

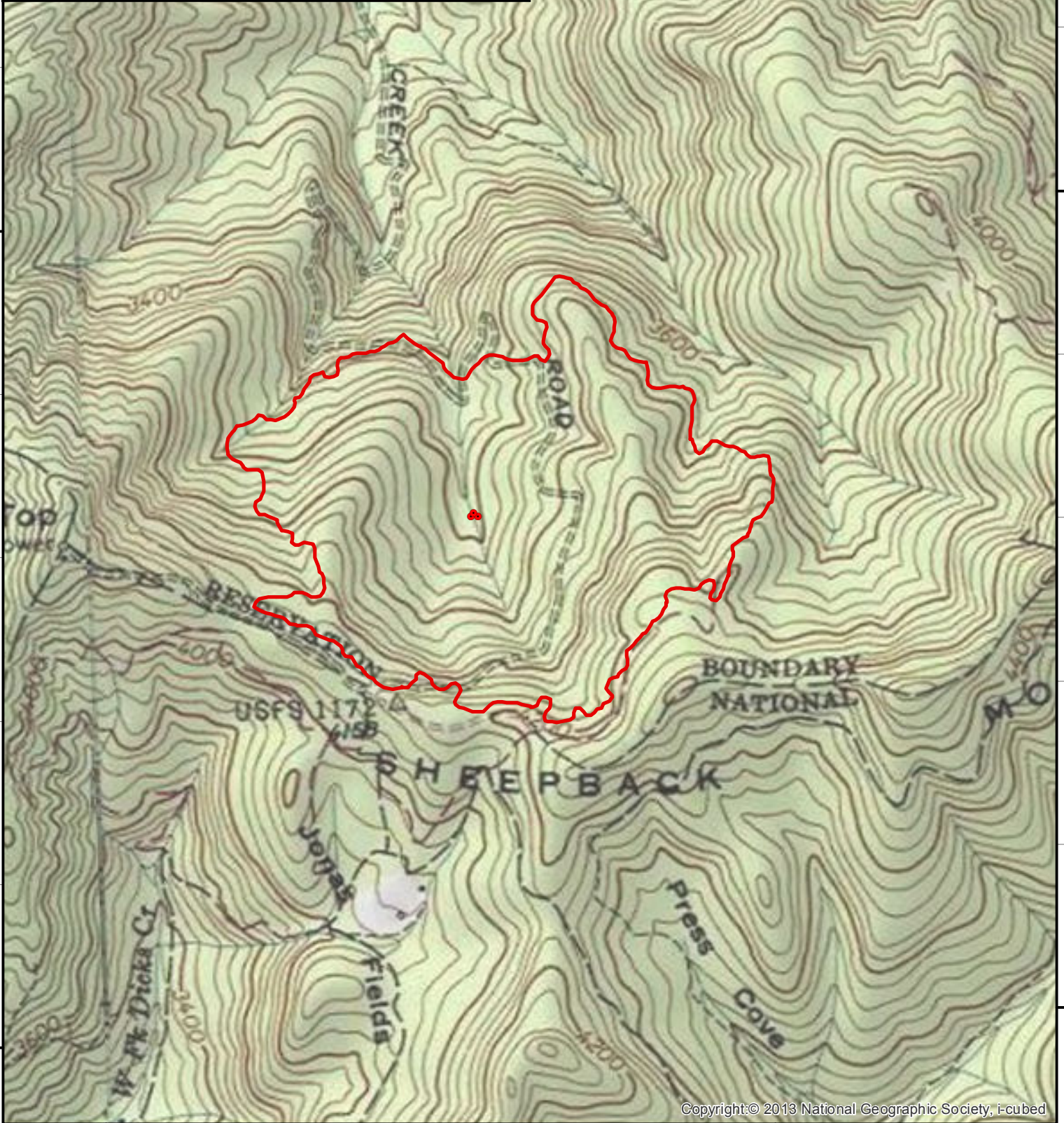


35°27'N

35°27'N

35°26'N

35°26'N



83°15'W

83°14'W