

82°44'0"W

82°43'30"W



HWY 151 Incident NC-NCF-160382 Infrared Map

Imagery Date: 11/25/2016 @ 0237 hrs
Interpreted Acres: 245 acres
IRIN: Maximilian Wahlberg



35°27'30"N

35°27'30"N

35°27'0"N

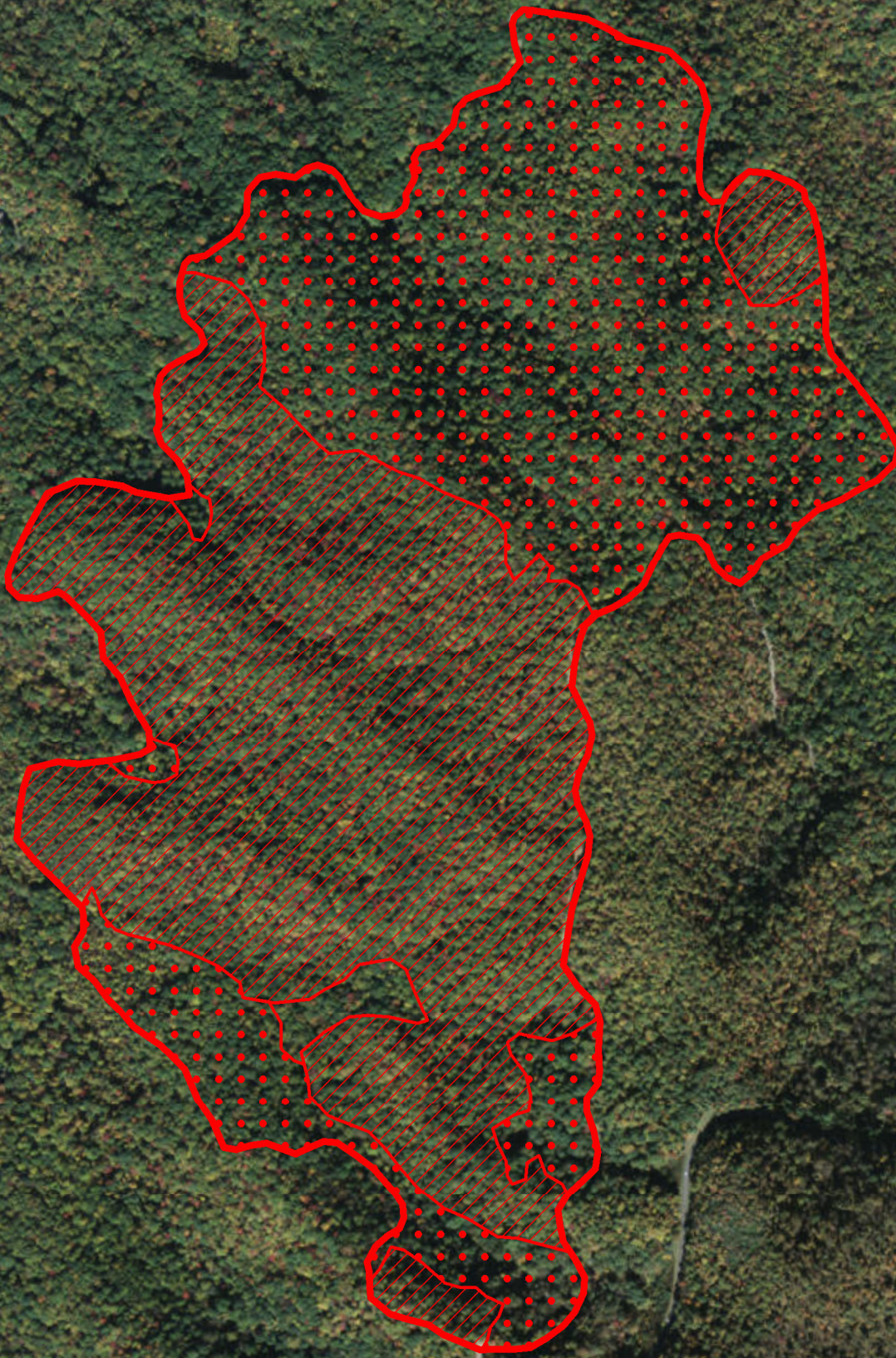
35°27'0"N

35°26'30"N

35°26'30"N

35°26'0"N

35°26'0"N



Legend

- Isolated Heat
- Heat Perimeter
- Intense Heat
- Scattered Heat

0.25 0.125 0 0.25 Miles

Source: Esri, DigitalGlobe, GeoEye, Earthstar Geographics, CNES/Airbus DS, USDA, USGS, AEX, Getmapping, Aerogrid, IGN, IGP, swisstopo, and the GIS User Community

82°44'0"W

82°43'30"W