

82°44'0"W

82°43'30"W



**HWY 151 Incident  
NC-NCF-160382  
Infrared Map**

Imagery Date: 11/28/2016 @ 0031 hrs  
Interpreted Acres: 245 acres  
IRIN: Maximilian Wahlberg



35°27'30"N

35°27'0"N

35°26'30"N

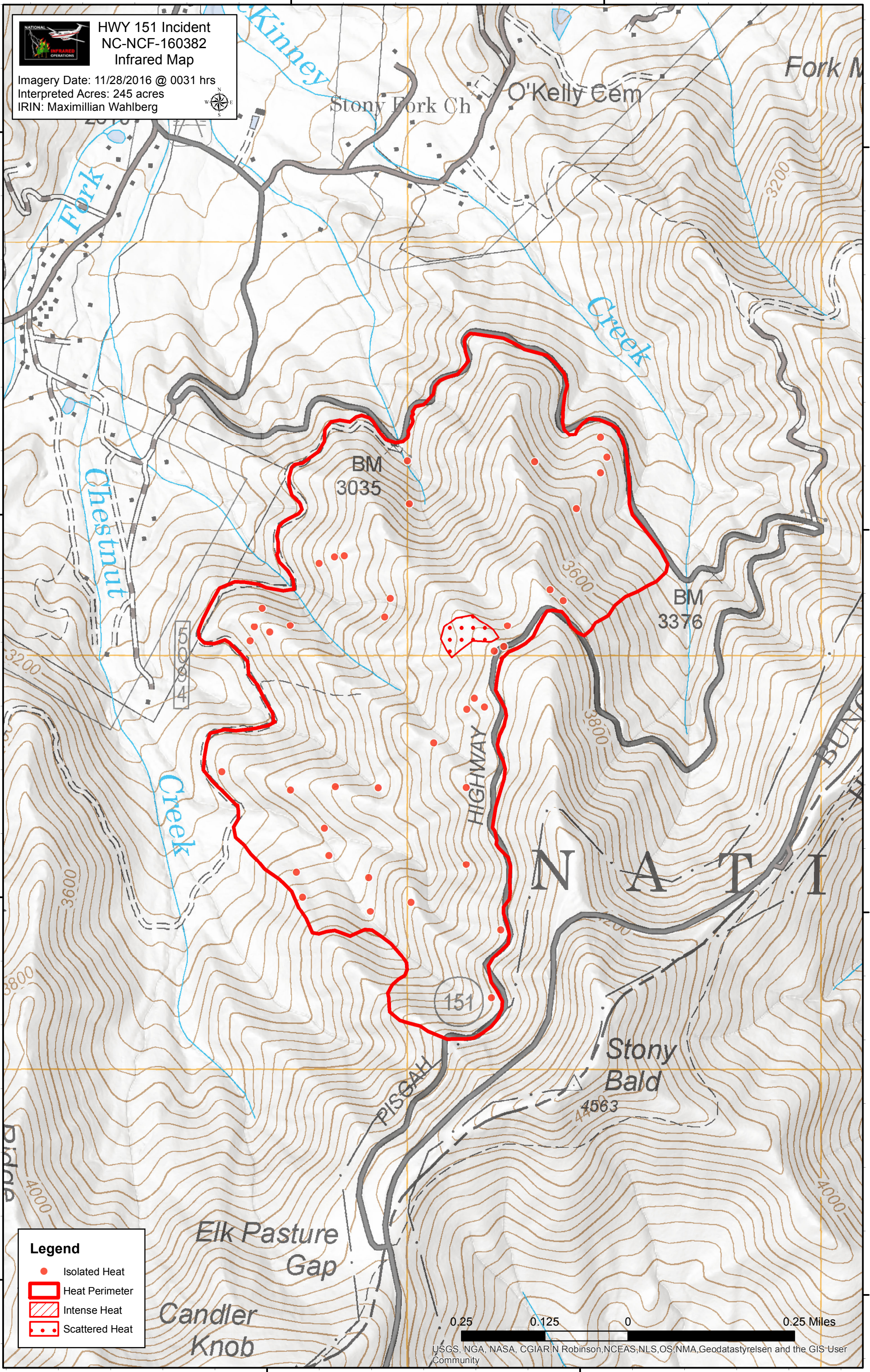
35°26'0"N

35°27'30"N

35°27'0"N

35°26'30"N

35°26'0"N



**Legend**

- Isolated Heat
- Heat Perimeter
- Intense Heat
- Scattered Heat

0.25 0.125 0 0.25 Miles

USGS, NGA, NASA, CGIAR, N Robinson, NCEAS, NLS, OS, NMA, Geodatastyrelsen and the GIS User Community

82°44'0"W

82°43'30"W