

81°36'0"W 81°35'30"W 81°35'0"W 81°34'30"W 81°34'0"W 81°33'30"W 81°33'0"W 81°32'30"W



### Horton Incident NC-NCS-160059 Infrared Map



Imagery Date: 11/22/2016 @ 2339hrs  
Interpreted Acres: 761 acres  
IRIN: Maximillian Wahlberg

36°9'30"N

36°9'0"N

36°8'30"N

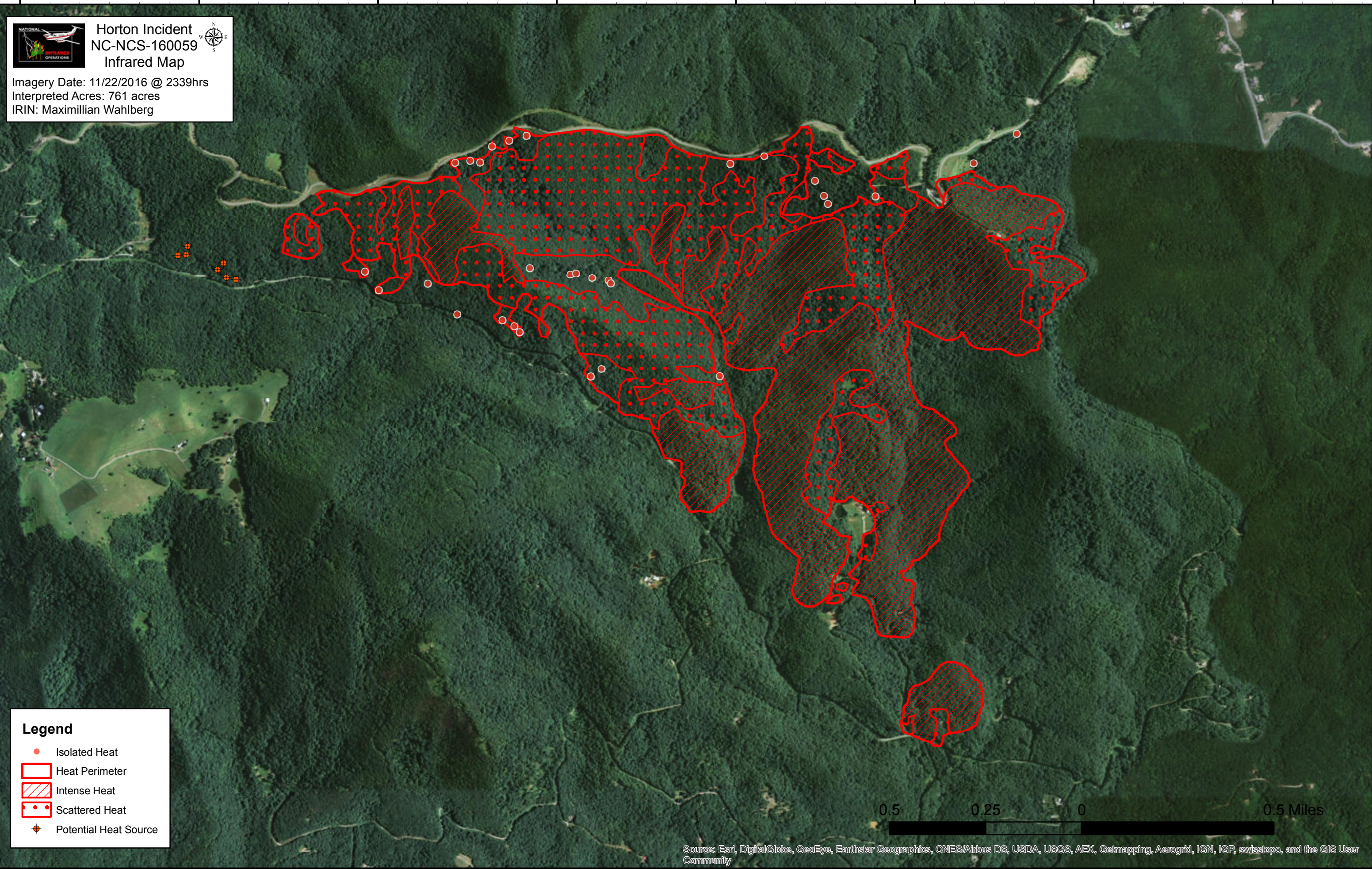
36°8'0"N

36°9'30"N

36°9'0"N

36°8'30"N

36°8'0"N



#### Legend

- Isolated Heat
- Heat Perimeter
- Intense Heat
- Scattered Heat
- ⊕ Potential Heat Source

0.5 0.25 0 0.5 Miles

Source: Esri, DigitalGlobe, GeoEye, Earthstar Geographics, CNES/Airbus DS, USDA, USGS, AEX, Getmapping, Aerogrid, IGN, IGP, swisstopo, and the GIS User Community

81°36'0"W 81°35'30"W 81°35'0"W 81°34'30"W 81°34'0"W 81°33'30"W 81°33'0"W 81°32'30"W