

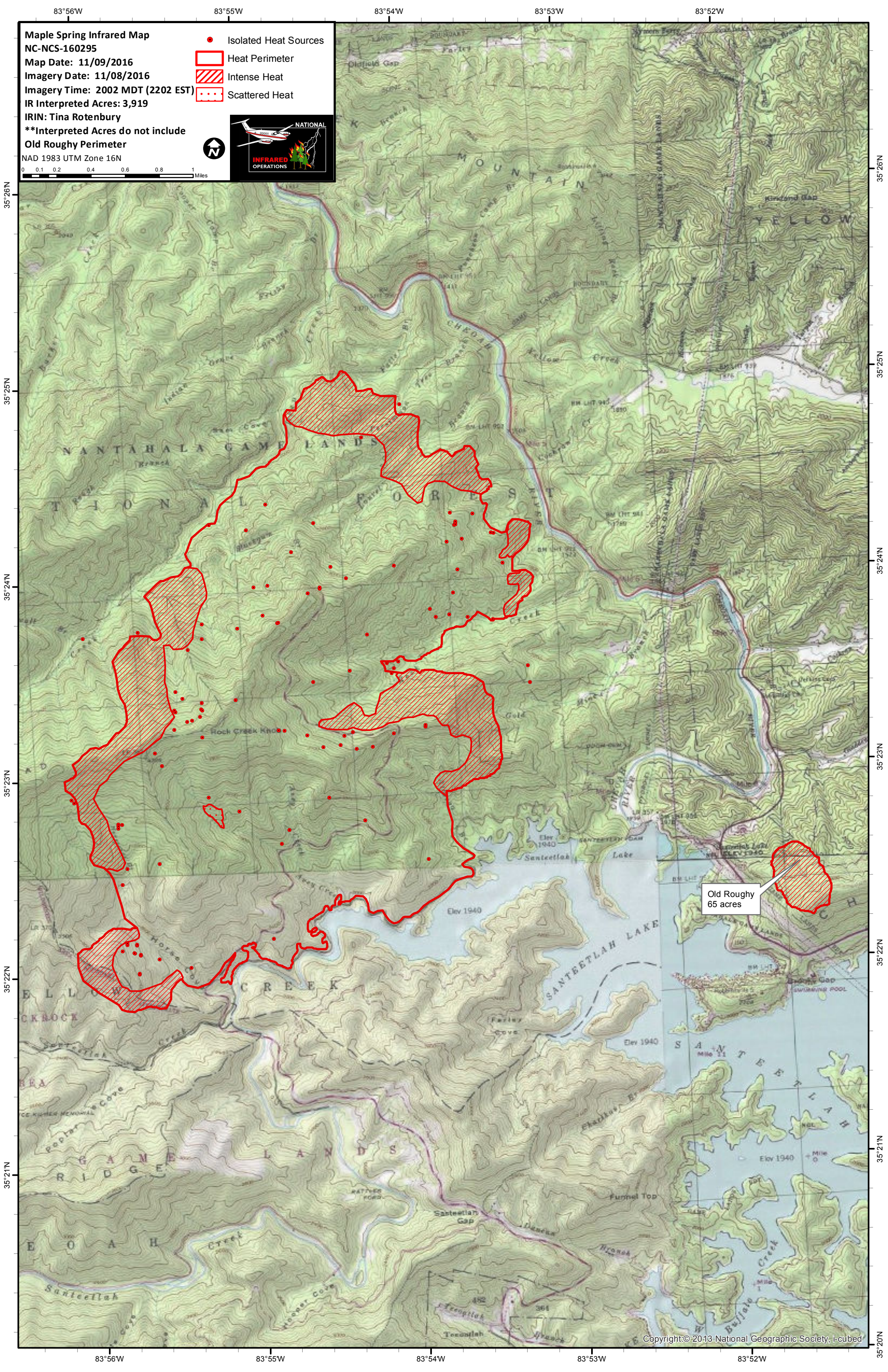


**Maple Spring Infrared Map**  
 NC-NCS-160295  
 Map Date: 11/09/2016  
 Imagery Date: 11/08/2016  
 Imagery Time: 2002 MDT (2202 EST)  
 IR Interpreted Acres: 3,919  
 IRIN: Tina Rotenbury  
 \*\*Interpreted Acres do not include  
 Old Roughy Perimeter  
 NAD 1983 UTM Zone 16N

- Isolated Heat Sources
- Heat Perimeter
- Intense Heat
- Scattered Heat

Old Roughy  
65 acres