
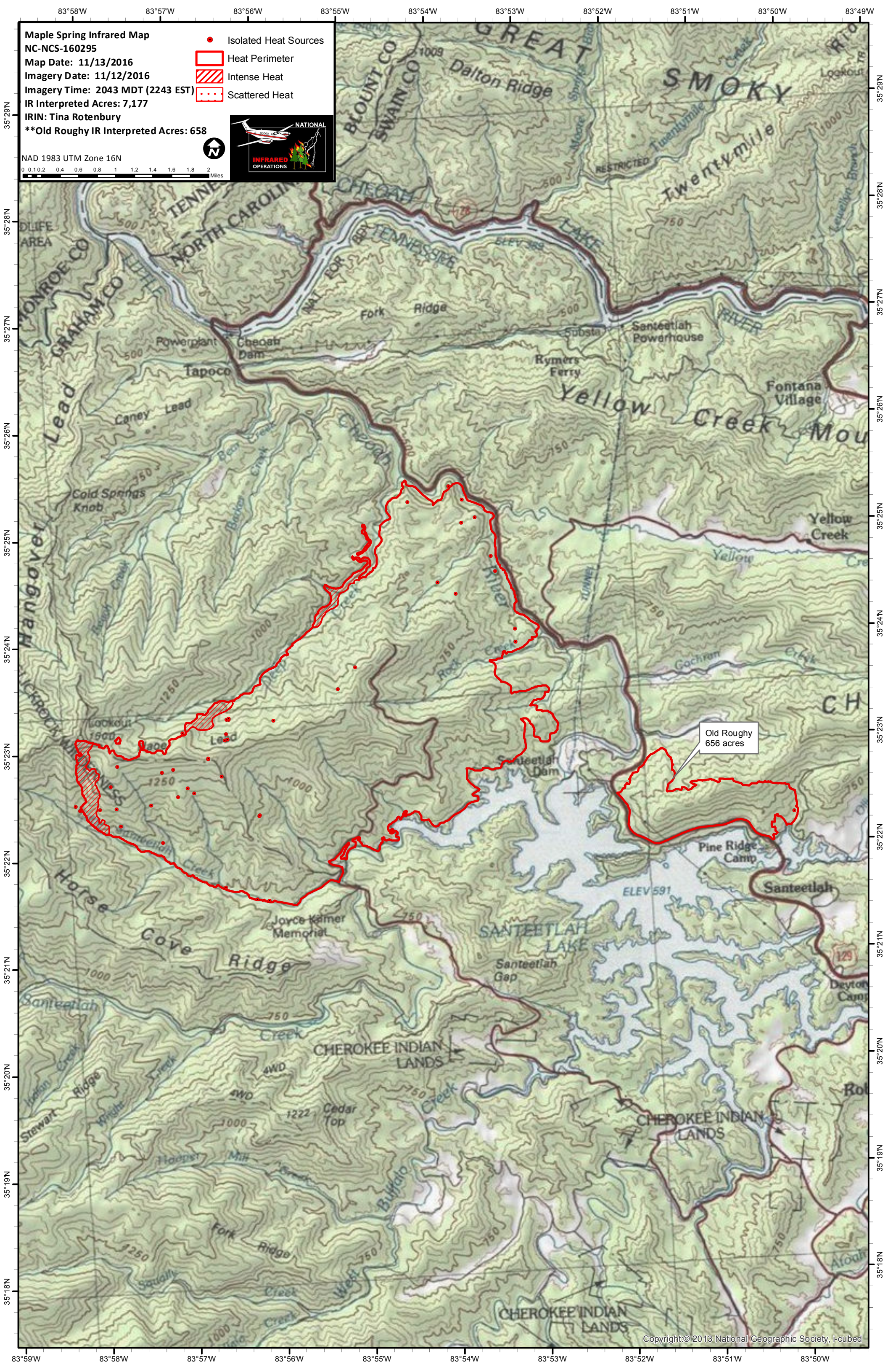


**Maple Spring Infrared Map**  
 NC-NCS-160295  
 Map Date: 11/13/2016  
 Imagery Date: 11/12/2016  
 Imagery Time: 2043 MDT (2243 EST)  
 IR Interpreted Acres: 7,177  
 IRIN: Tina Rotenbury  
 \*\*Old Roughy IR Interpreted Acres: 658

- Isolated Heat Sources
- Heat Perimeter
- Intense Heat
- Scattered Heat

NAD 1983 UTM Zone 16N  
 0 0.1 0.2 0.4 0.6 0.8 1 1.2 1.4 1.6 1.8 2 Miles

Old Roughy  
656 acres