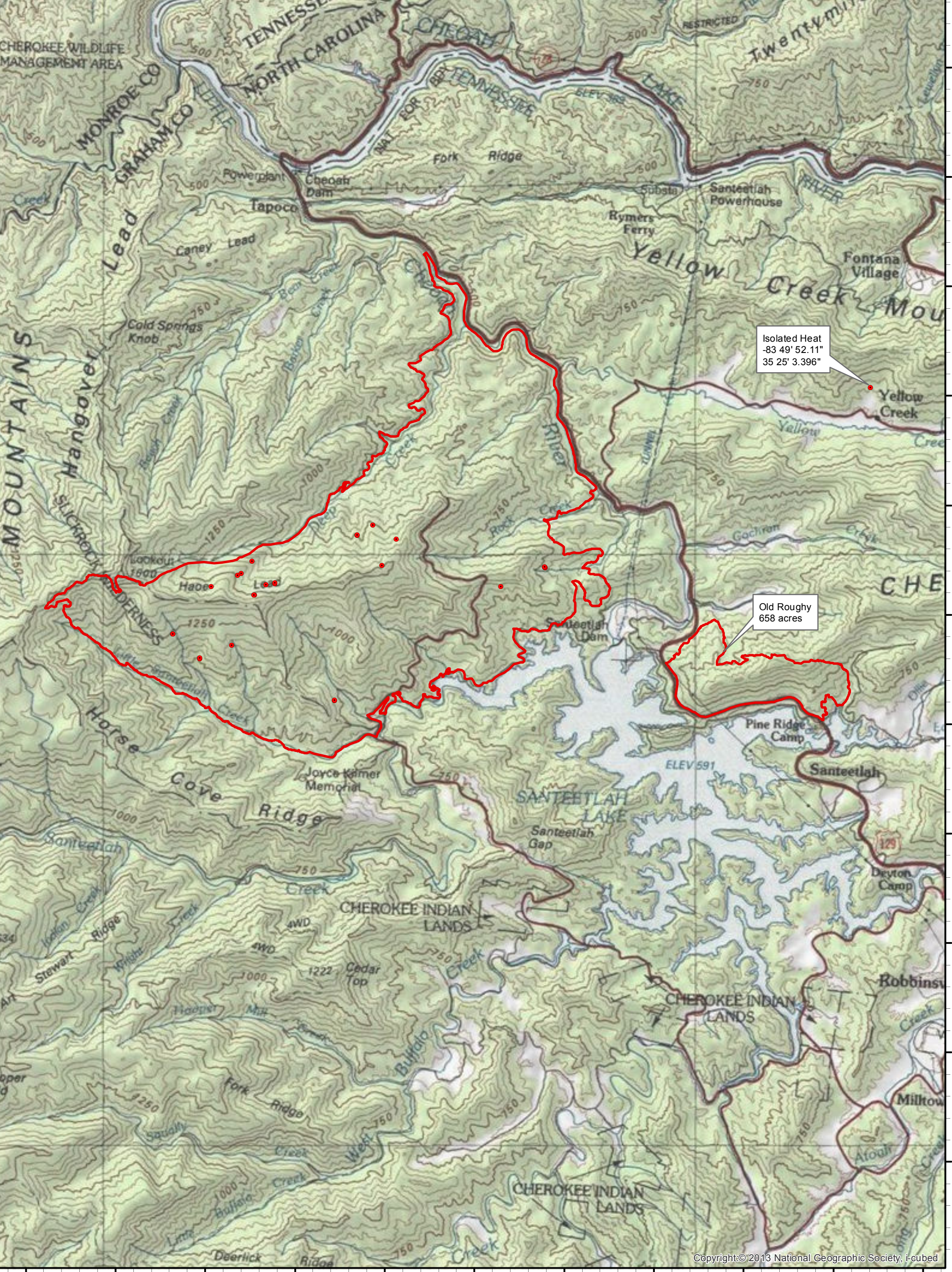


Maple Spring Infrared Map
 NC-NCS-160295
 Map Date: 11/20/2016
 Imagery Date: 11/19/2016
 Imagery Time: 2335 EST
 IR Interpreted Acres: 7,788
 IRIN: Tina Rotenbury
 **Old Roughy IR Interpreted Acres: 658

- Isolated Heat Sources
- Heat Perimeter
- Intense Heat
- Scattered Heat

NAD 1983 UTM Zone 17N
 0 0.1 0.2 0.4 0.6 0.8 1 1.2 1.4 1.6 1.8 2 Miles



Isolated Heat
 -83 49' 52.11"
 35 25' 3.396"

Old Roughy
 658 acres