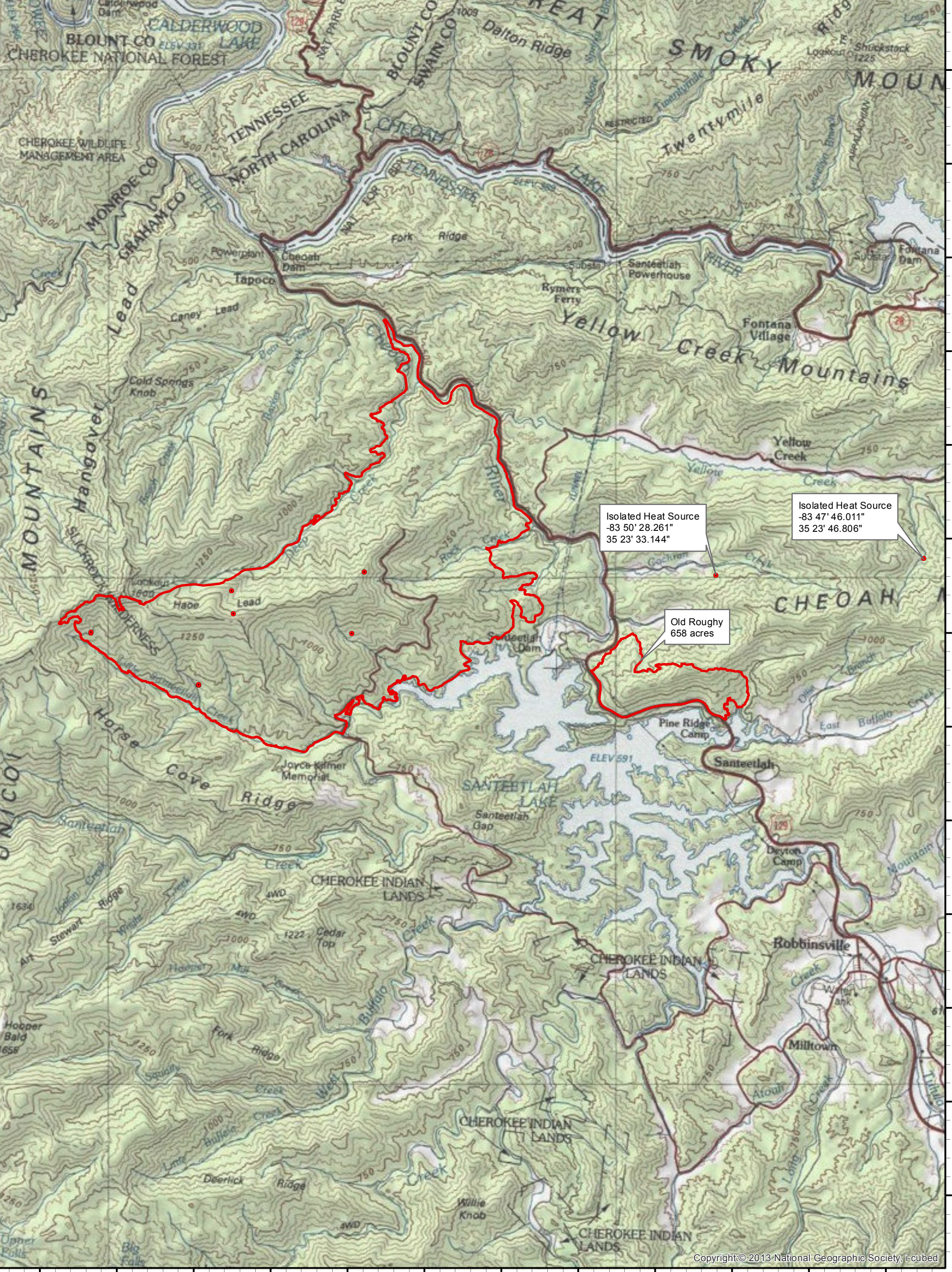


Maple Spring Infrared Map
 NC-NCS-160295
 Map Date: 11/21/2016
 Imagery Date: 11/20/2016
 Imagery Time: 2206 EST
 IR Interpreted Acres: 7,788
 IRIN: Tina Rotenbury
 **Old Roughy IR Interpreted Acres: 658

- Isolated Heat Sources
- Heat Perimeter
- Intense Heat
- Scattered Heat

NAD 1983 UTM Zone 17N
 0.0 0.2 0.4 0.6 0.8 1 1.2 1.4 1.6 1.8 2 2.2 2.4
 Miles



Isolated Heat Source
 -83 50' 28.261"
 35 23' 33.144"

Isolated Heat Source
 -83 47' 46.011"
 35 23' 46.806"

Old Roughy
 658 acres