

84°0'W 83°59'W 83°58'W 83°57'W 83°56'W 83°55'W 83°54'W 83°53'W 83°52'W 83°51'W 83°50'W 83°49'W 83°48'W 83°47'W

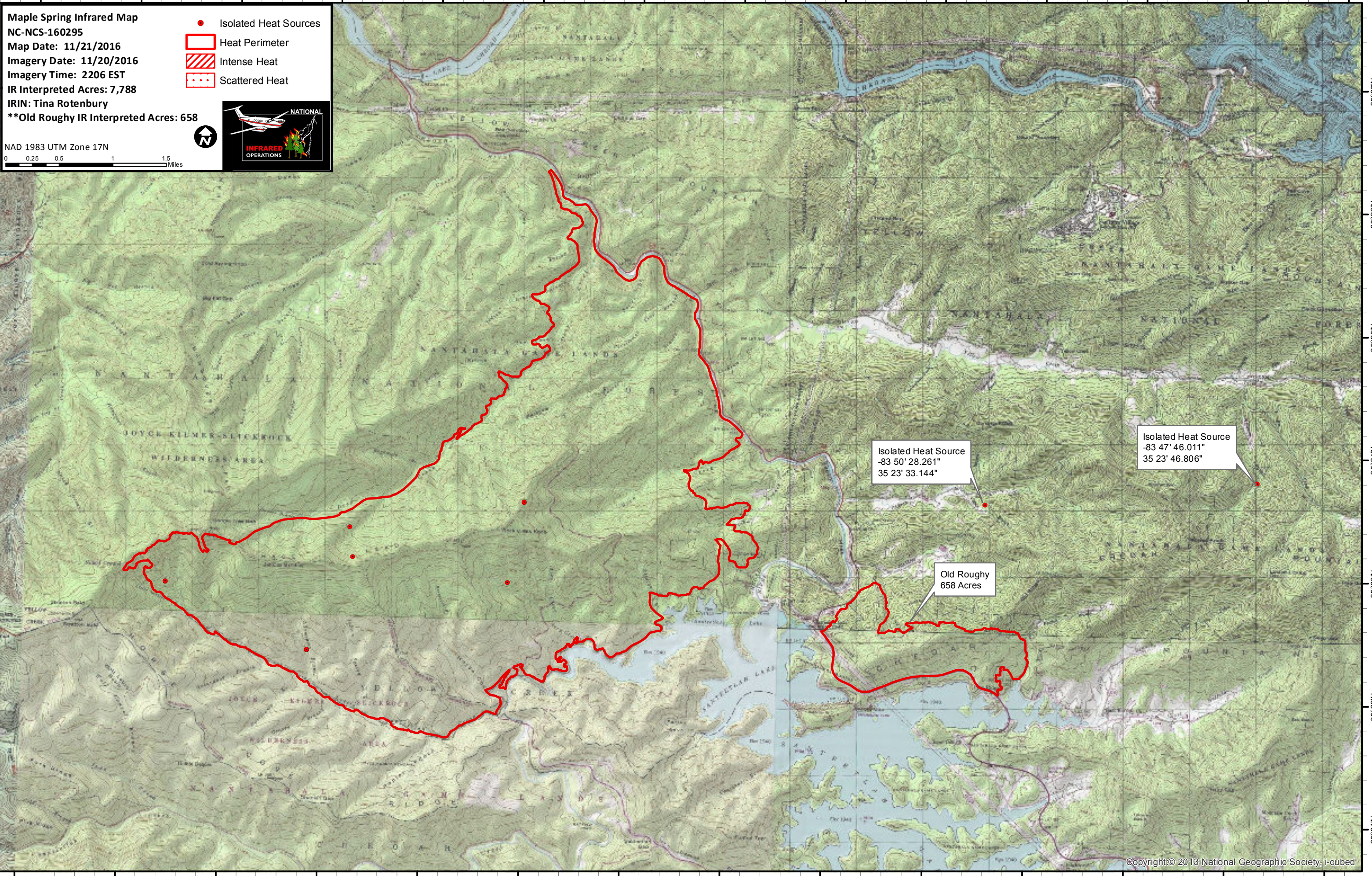
Maple Spring Infrared Map
NC-NCS-160295
Map Date: 11/21/2016
Imagery Date: 11/20/2016
Imagery Time: 2206 EST
IR Interpreted Acres: 7,788
IRIN: Tina Rotenbury
**Old Roughy IR Interpreted Acres: 658

- Isolated Heat Sources
- Heat Perimeter
- Intense Heat
- Scattered Heat



NAD 1983 UTM Zone 17N

0 0.25 0.5 1 1.5 Miles



Isolated Heat Source
-83 50' 28.261"
35 23' 33.144"

Isolated Heat Source
-83 47' 46.011"
35 23' 46.806"

Old Roughy
658 Acres

84°0'W 83°59'W 83°58'W 83°57'W 83°56'W 83°55'W 83°54'W 83°53'W 83°52'W 83°51'W 83°50'W 83°49'W 83°48'W 83°47'W