


84°0'W 83°59'W 83°58'W 83°57'W 83°56'W 83°55'W 83°54'W 83°53'W 83°52'W 83°51'W 83°50'W

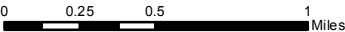
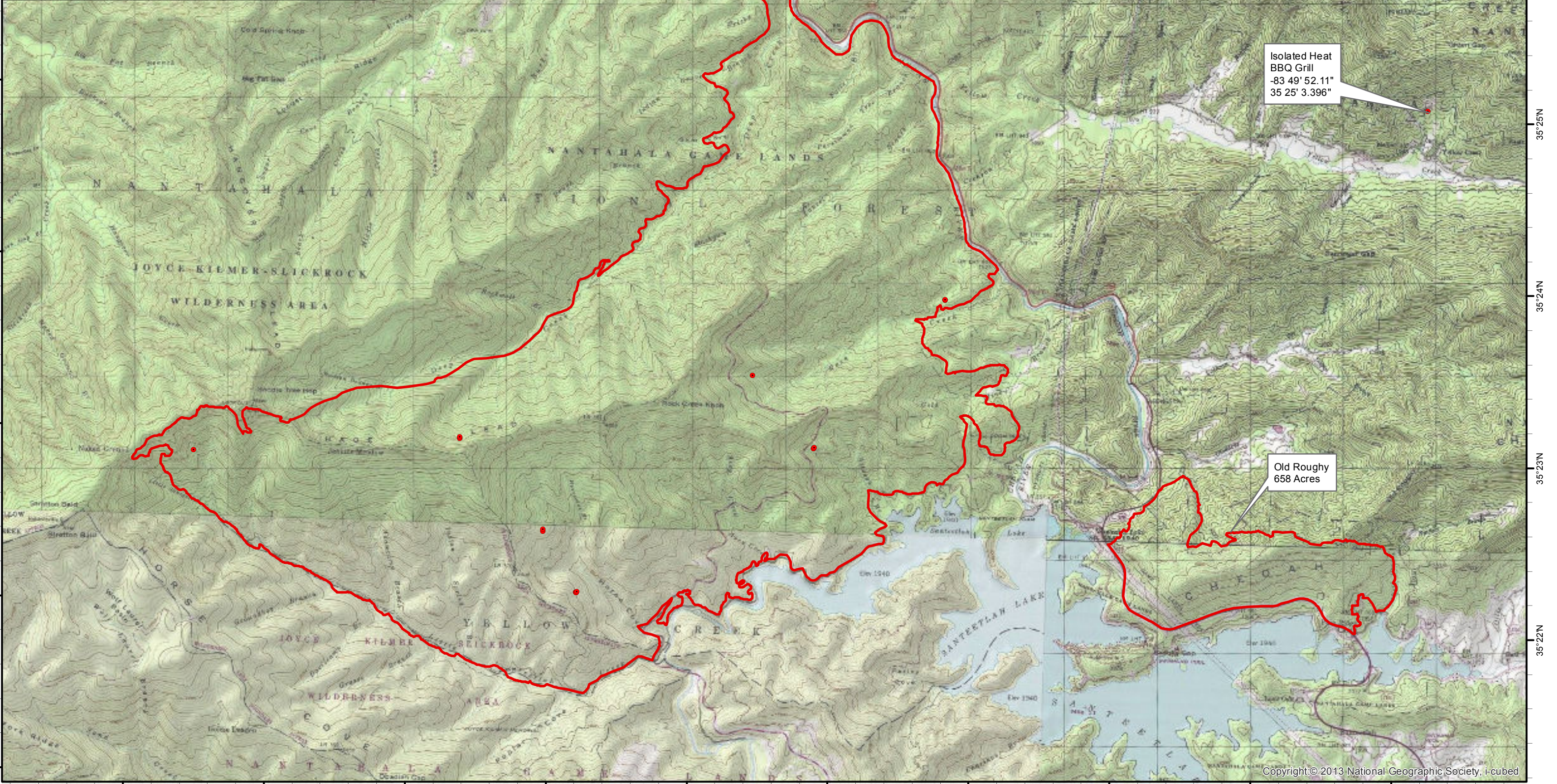
35°26'N 35°25'N 35°24'N 35°23'N 35°22'N 35°21'N

**Maple Spring Infrared Map**  
 NC-NCS-160295  
 Map Date: 11/22/2016  
 Imagery Date: 11/21/2016  
 Imagery Time: 2145 EST  
 IR Interpreted Acres: 7,788  
 IRIN: Tina Rotenbury  
 \*\*Old Roughy IR Interpreted Acres: 658

- Isolated Heat Sources
- Heat Perimeter
- Intense Heat
- Scattered Heat



NAD 1983 UTM Zone 17N

Isolated Heat  
 BBQ Grill  
 -83 49' 52.11"  
 35 25' 3.396"

Old Roughy  
 658 Acres

83°59'W 83°58'W 83°57'W 83°56'W 83°55'W 83°54'W 83°53'W 83°52'W 83°51'W 83°50'W