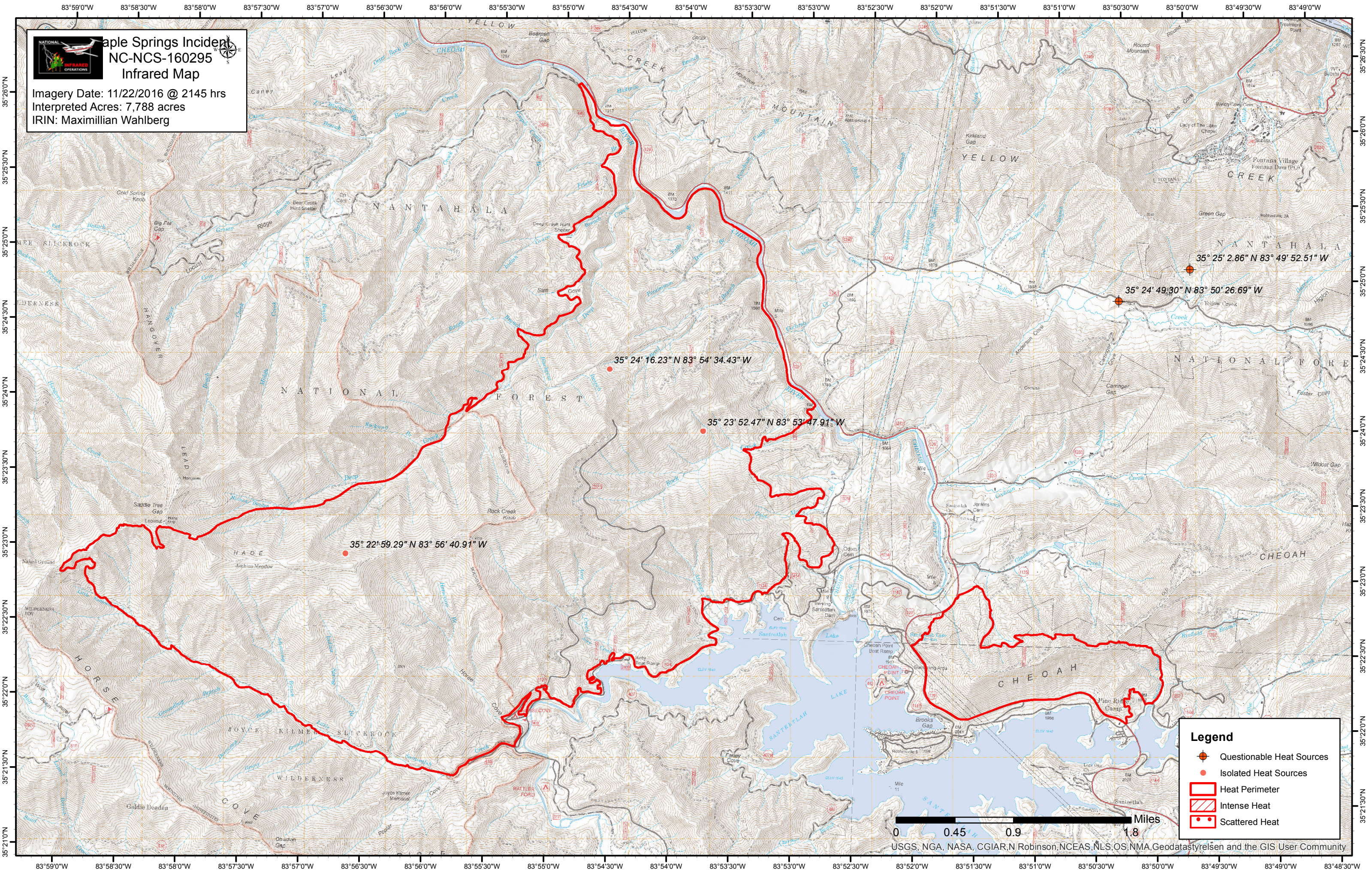


Apple Springs Incident
NC-NCS-160295
Infrared Map

Imagery Date: 11/22/2016 @ 2145 hrs
 Interpreted Acres: 7,788 acres
 IRIN: Maximillian Wahlberg



35° 24' 16.23" N 83° 54' 34.43" W

35° 23' 52.47" N 83° 53' 47.91" W

35° 22' 59.29" N 83° 56' 40.91" W

35° 25' 2.86" N 83° 49' 52.51" W

35° 24' 49.30" N 83° 50' 26.69" W

- Legend**
- Questionable Heat Sources
 - Isolated Heat Sources
 - Heat Perimeter
 - Intense Heat
 - Scattered Heat



USGS, NGA, NASA, CGIAR, N Robinson, NCEAS, NLS, OS, NMA, Geodatastyreisen and the GIS User Community