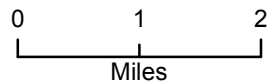


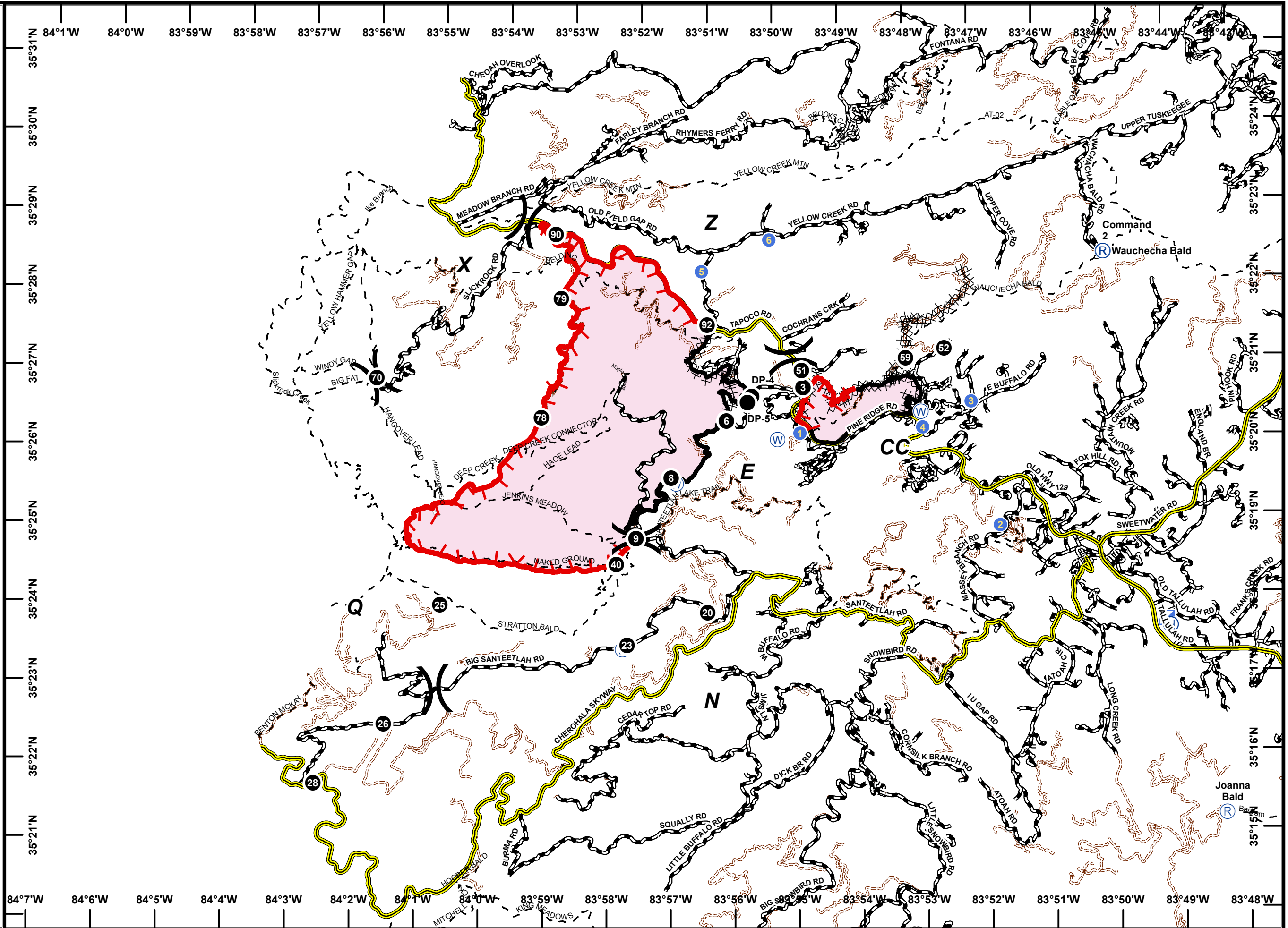
Maple Springs Fire
 NC-NCF-106295
Transportation Map
 11/15/2016

Legend

- () Division Break
- Drop Point
- (H) Helibase
- (B) Helispot
- (I) ICP
- (R) Repeater
- (W) Water Source
- Completed Line
- XXXXX Dozer Line
- Planned Fire Line
- Uncontrolled Fire Edge
- Minor Roads
- US Forest Service Roads
- - - US Forst Service Trails
- Grid Index Layer



Maple Springs 7,515 Acres
 Old Roughy 658 Acres
 Approximate Perimeter as of
 11/13/2016 @ 2100 Hrs.



84°7'W 84°6'W 84°5'W 84°4'W 84°3'W 84°2'W 84°1'W 84°0'W 83°59'W 83°58'W 83°57'W 83°56'W 83°55'W 83°54'W 83°53'W 83°52'W 83°51'W 83°50'W 83°49'W 83°48'W