

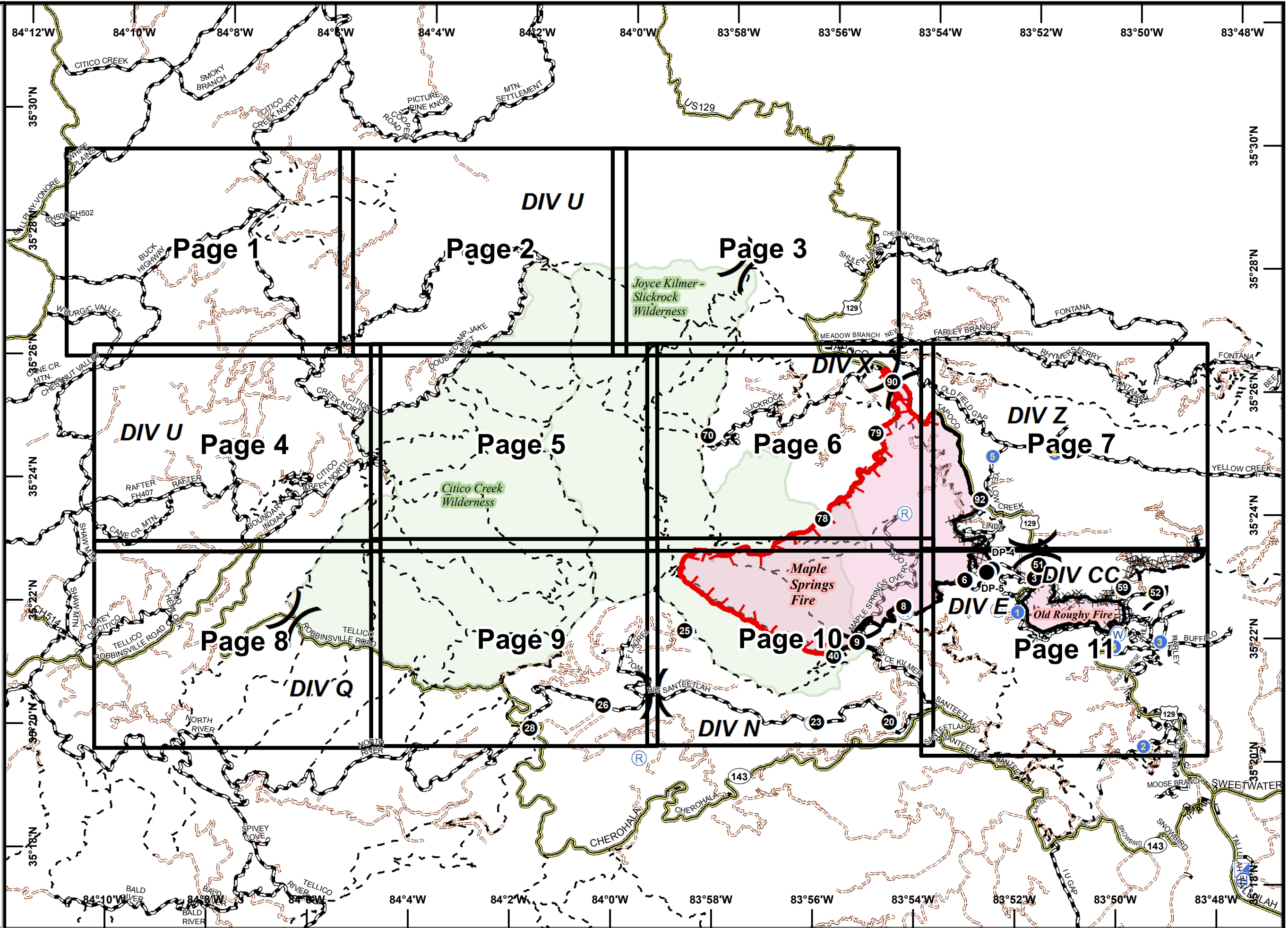
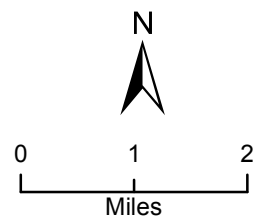
Page Grid Index Map

Maple Springs Fire
NC-NCF-106295
11/16/2016
Day

Maple Springs 7,705 Acres
Old Roughy 657 Acres
Approximate Perimeter as of
11/14/2016 @ 1830 Hrs.

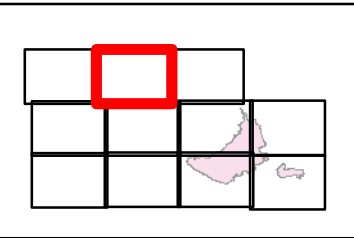
Legend

-  Division Break
-  Drop Point
-  Helibase
-  Helispot
-  ICP
-  Repeater
-  Water Source
-  Completed Line
-  Dozer Line
-  Planned Fire Line
-  Uncontrolled Fire Edge
-  US Forest Service Trails
-  Major Roads
-  Minor Roads
-  US Forest Service Roads

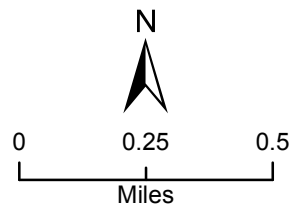


Maple Springs Fire
NC-NCF-160295
11/16/2016
Day
Map Page 2

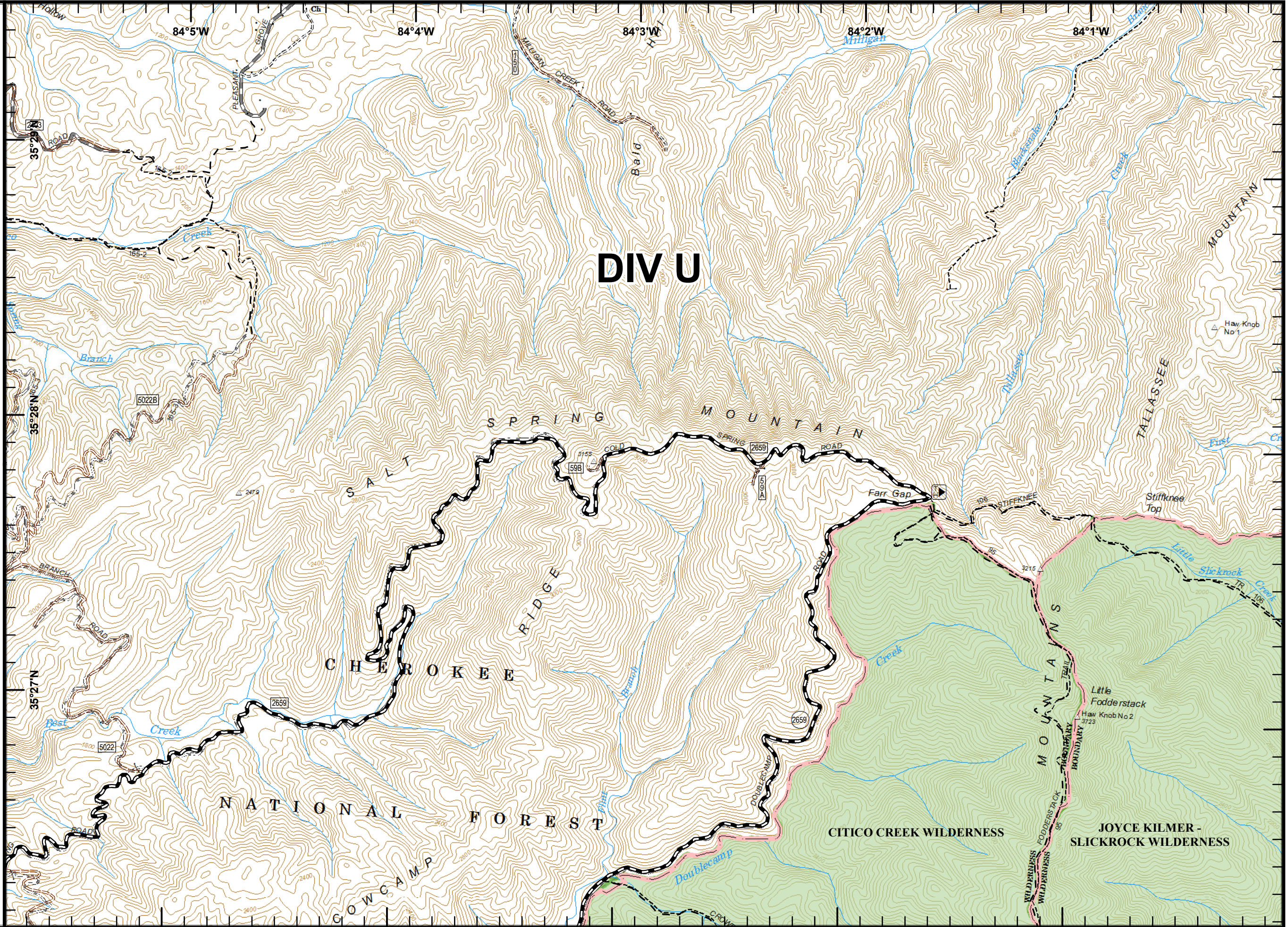
Legend
(X) Division Break



40 ft Contours
NAD 83 UTM 17

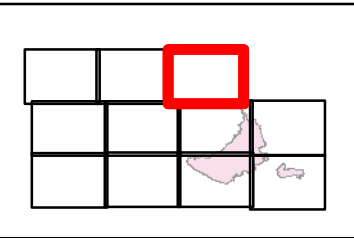


mrh
November 15, 2016
2130 Hours

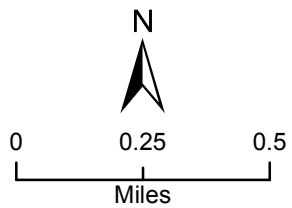


Maple Springs Fire
 NC-NCF-160295
 11/16/2016
 Day
 Map Page 3

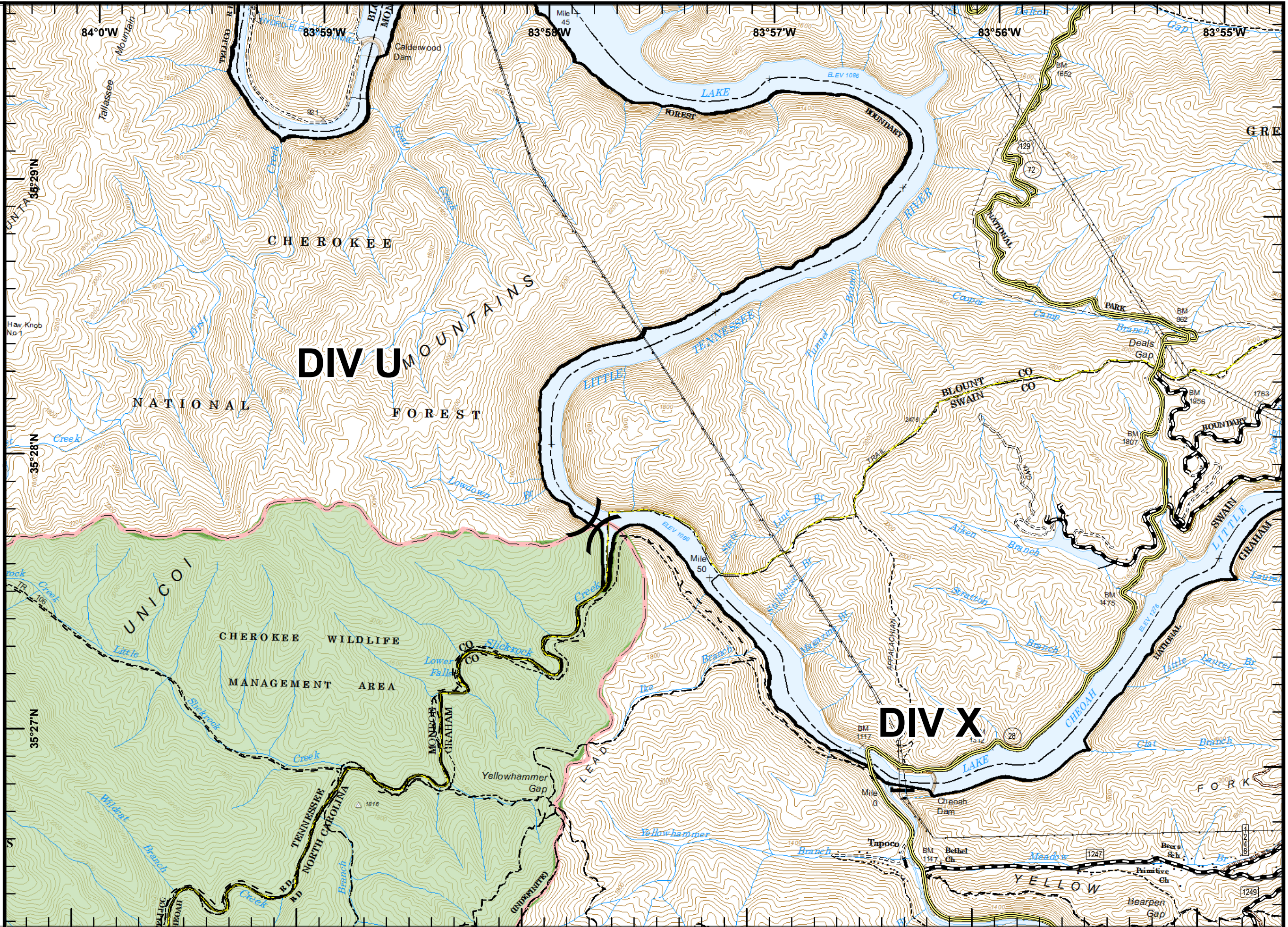
- Legend**
-  Division Break
 -  US Forest Service Trails
 -  Major Roads
 -  Minor Roads
 -  US Forest Service Roads





40 ft Contours
 NAD 83 UTM 17

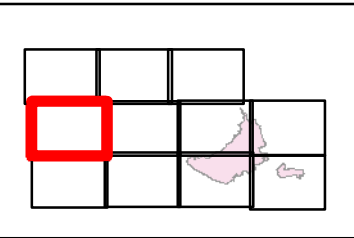


mrh
 November 15, 2016
 2130 Hours

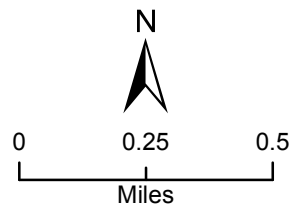


Maple Springs Fire
 NC-NCF-160295
 11/16/2016
 Day
 Map Page 4

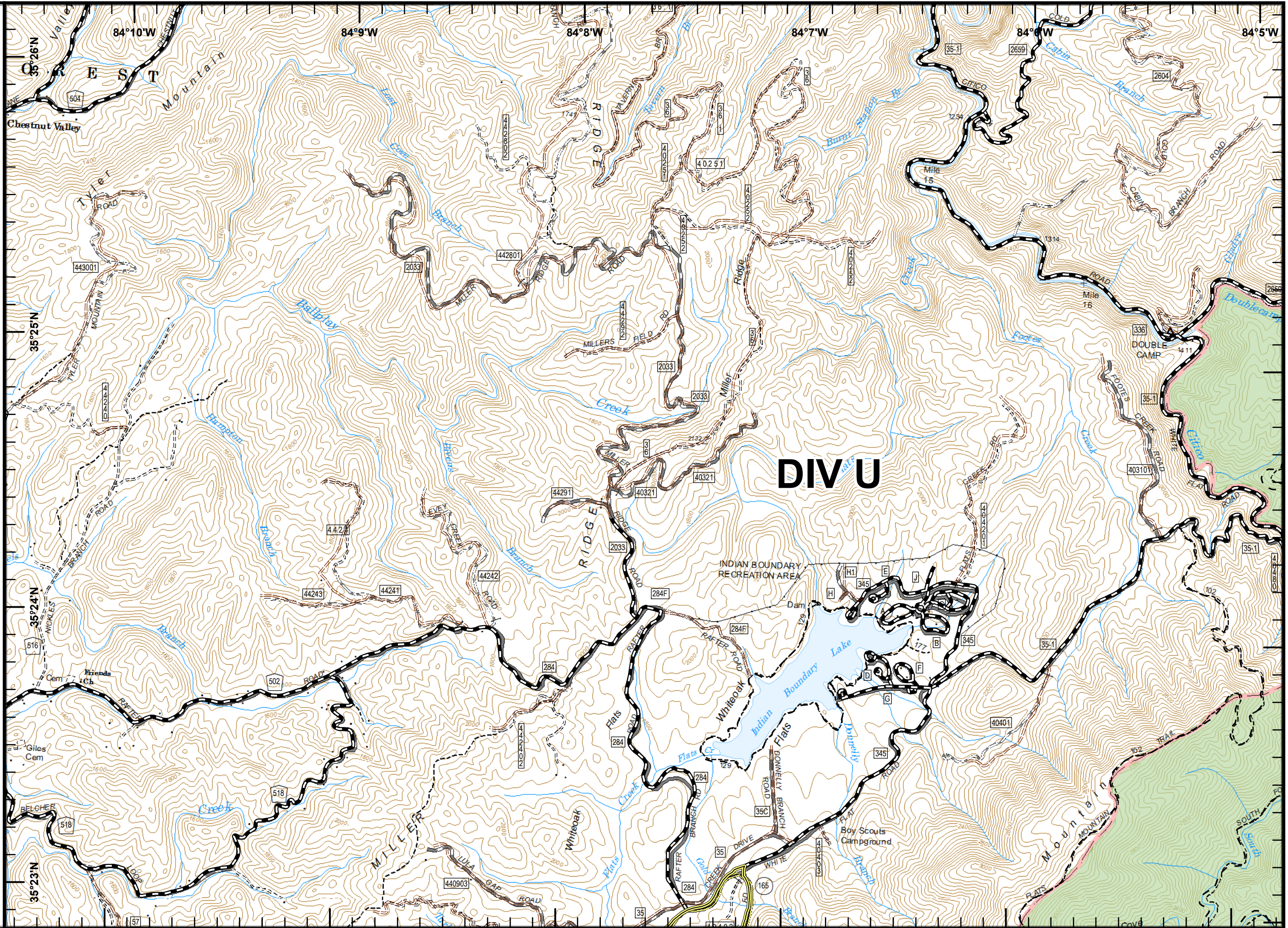
Legend
 Division Break
 Major Roads



40 ft Contours
 NAD 83 UTM 17

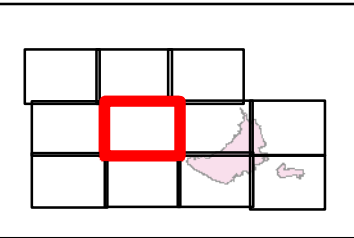


mhr
 November 15, 2016
 2130 Hours

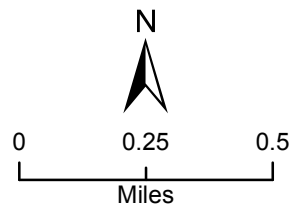


Maple Springs Fire
NC-NCF-160295
11/16/2016
Day
Map Page 5

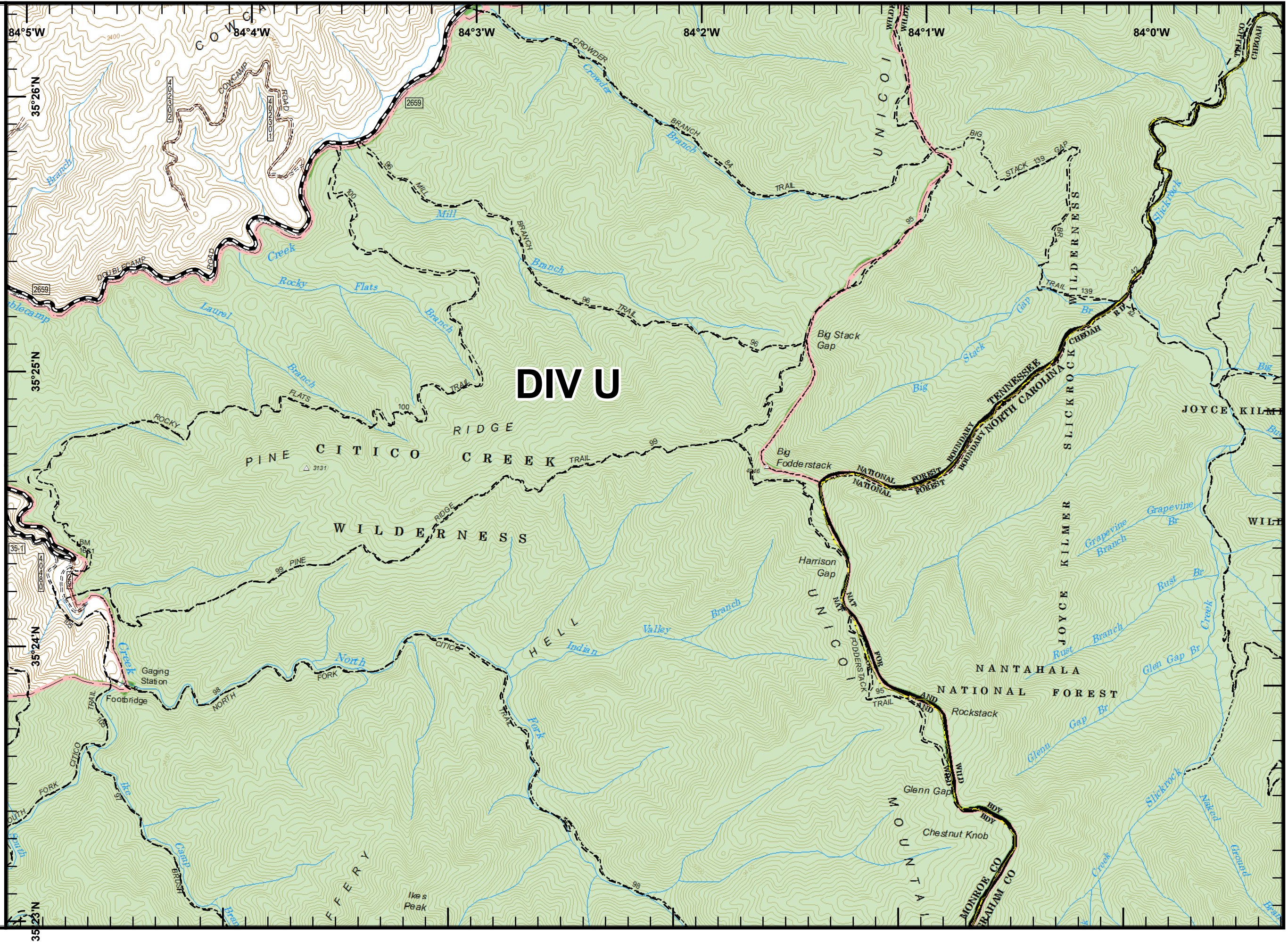
Legend
X Division Break
- - US Forest Service Trails



40 ft Contours
NAD 83 UTM 17



mjh
November 15, 2016
2130 Hours



Maple Springs Fire

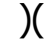






NC-NCF-160295

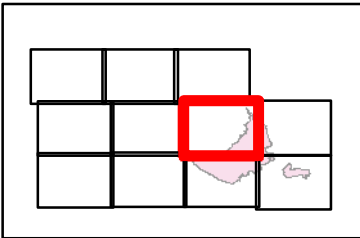
11/16/2016

Day

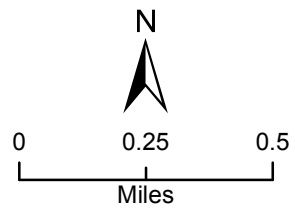
Map Page 6

Legend

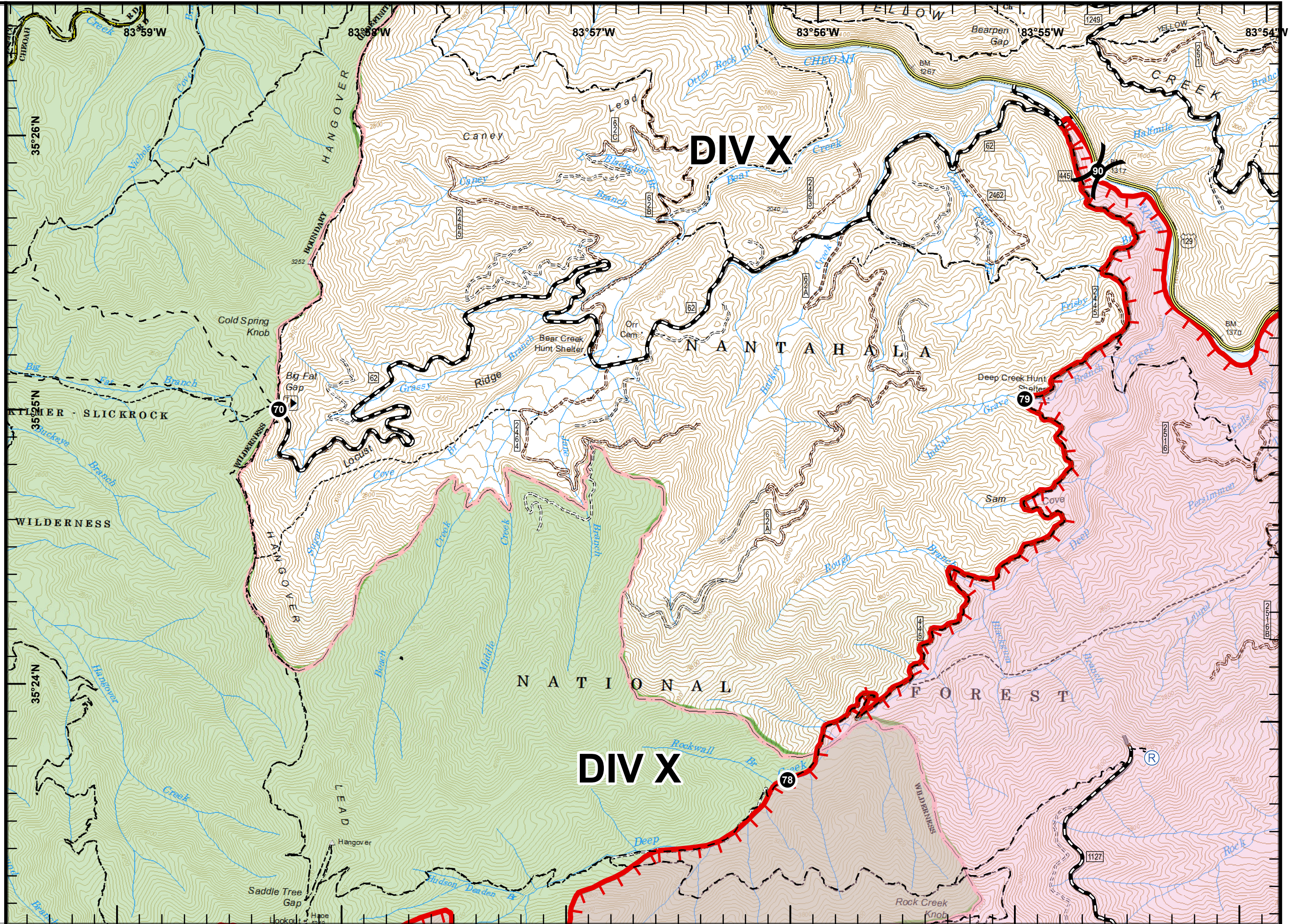
-  Division Break
-  Drop Point
-  Repeater
-  Completed Line
-  Uncontrolled Fire Edge
-  US Forest Service Trails
-  Minor Roads
-  US Forest Service Roads



40 ft Contours
NAD 83 UTM 17

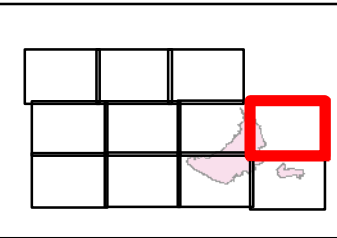


mjh
November 15, 2016
2130 Hours

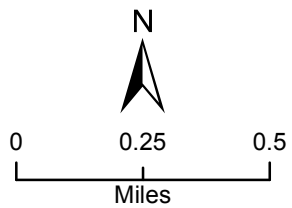


Maple Springs Fire
 NC-NCF-160295
 11/16/2016
 Day
 Map Page 7

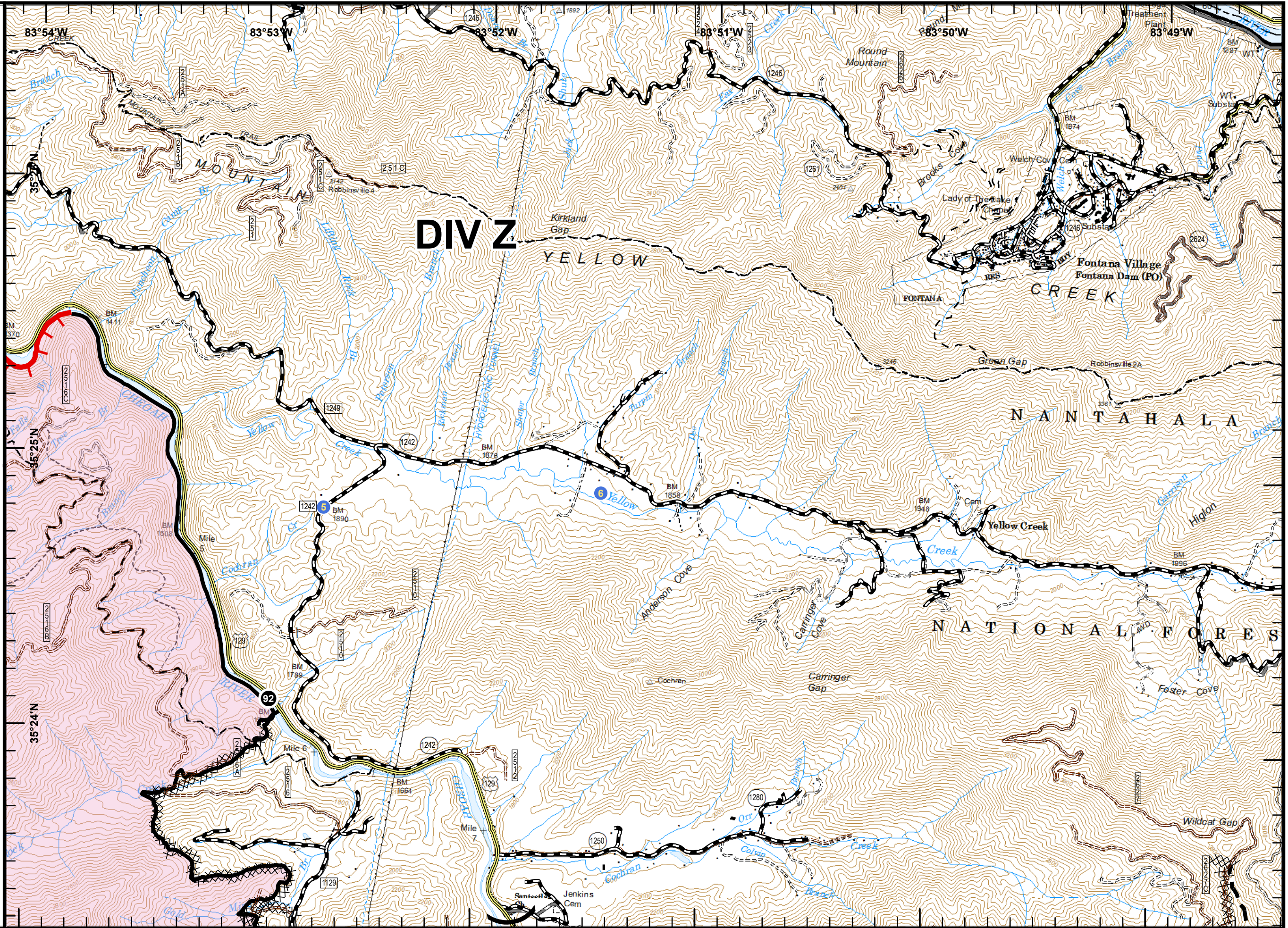
- Legend**
- (X) Division Break
 - Drop Point
 - Helispot
 - Completed Line
 - ⚡ Dozer Line
 - Planned Fire Line
 - 🔴 Uncontrolled Fire Edge
 - US Forest Service Trails
 - Minor Roads
 - US Forest Service Roads



40 ft Contours
 NAD 83 UTM 17

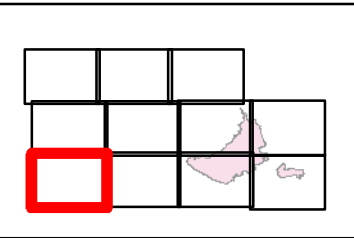


mjh
 November 15, 2016
 2130 Hours

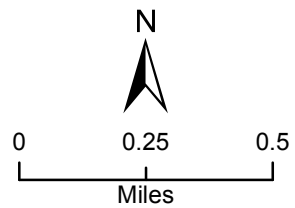


Maple Springs Fire
NC-NCF-160295
11/16/2016
Day
Map Page 8

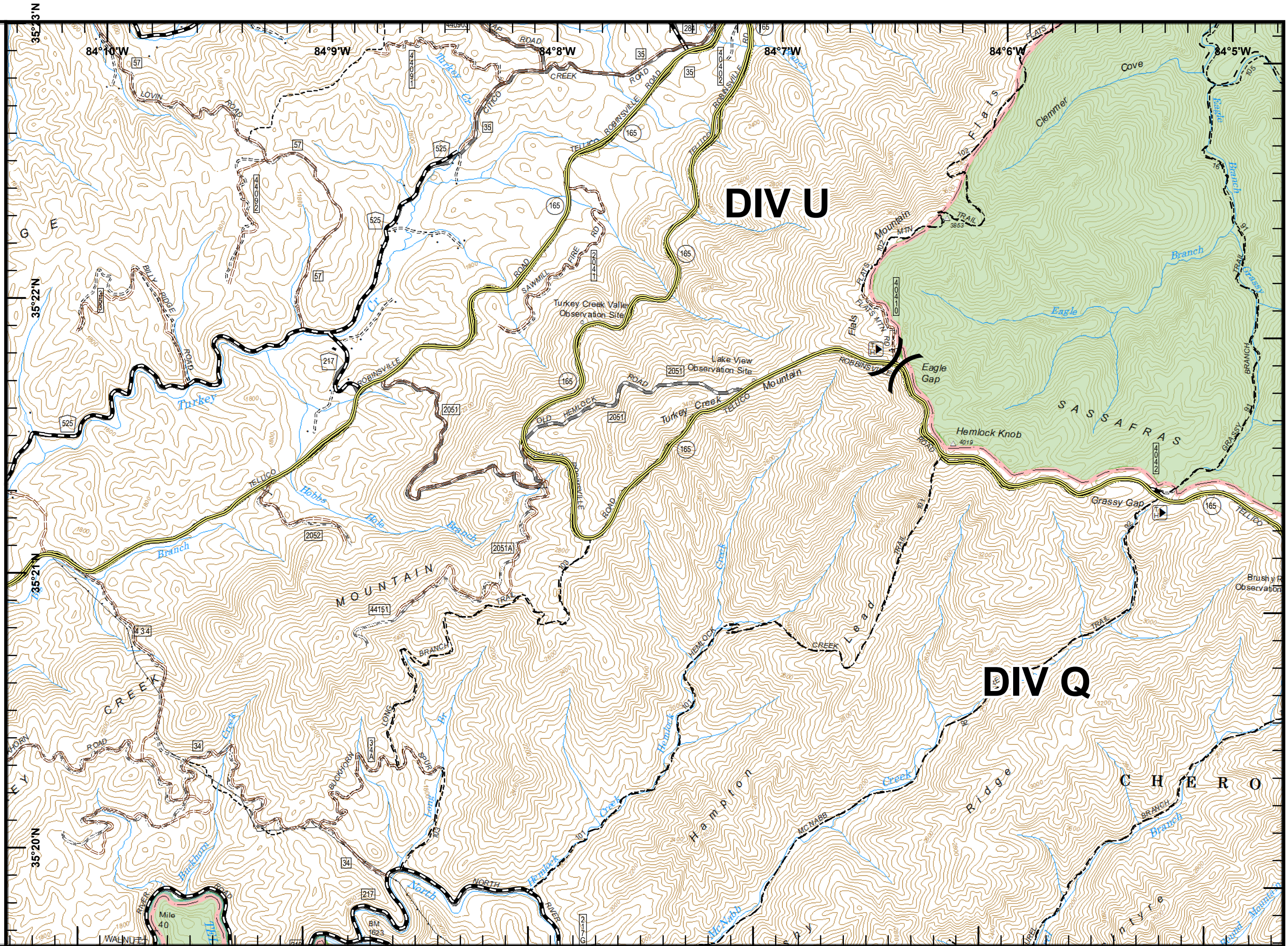
Legend
X Division Break
Major Roads









40 ft Contours
NAD 83 UTM 17

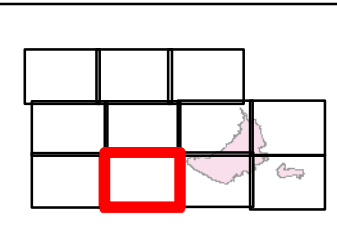


mjh
November 15, 2016
2130 Hours

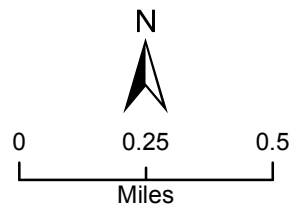


Maple Springs Fire
 NC-NCF-160295
 11/16/2016
 Day
 Map Page 9

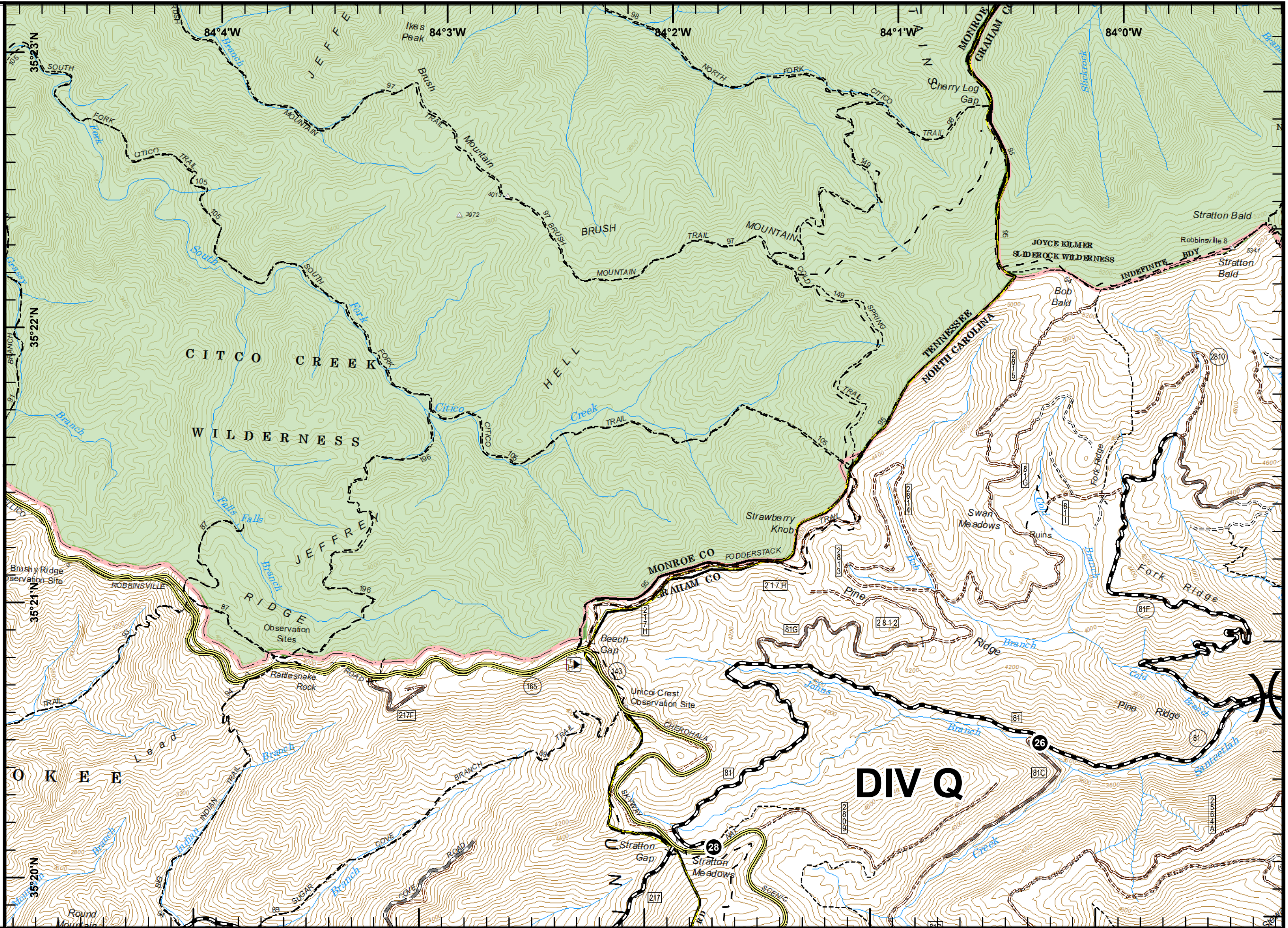
- Legend**
-  Division Break
 -  Drop Point
 -  US Forest Service Trails
 -  Major Roads
 -  Minor Roads
 -  US Forest Service Roads



40 ft Contours
 NAD 83 UTM 17



mh
 November 15, 2016
 2130 Hours



Maple Springs Fire

NC-NCF-160295

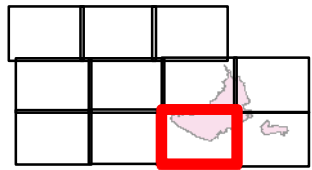
11/16/2016

Day

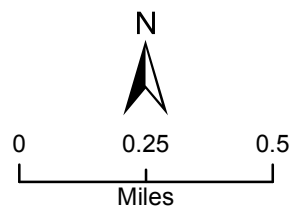
Map Page 10

Legend

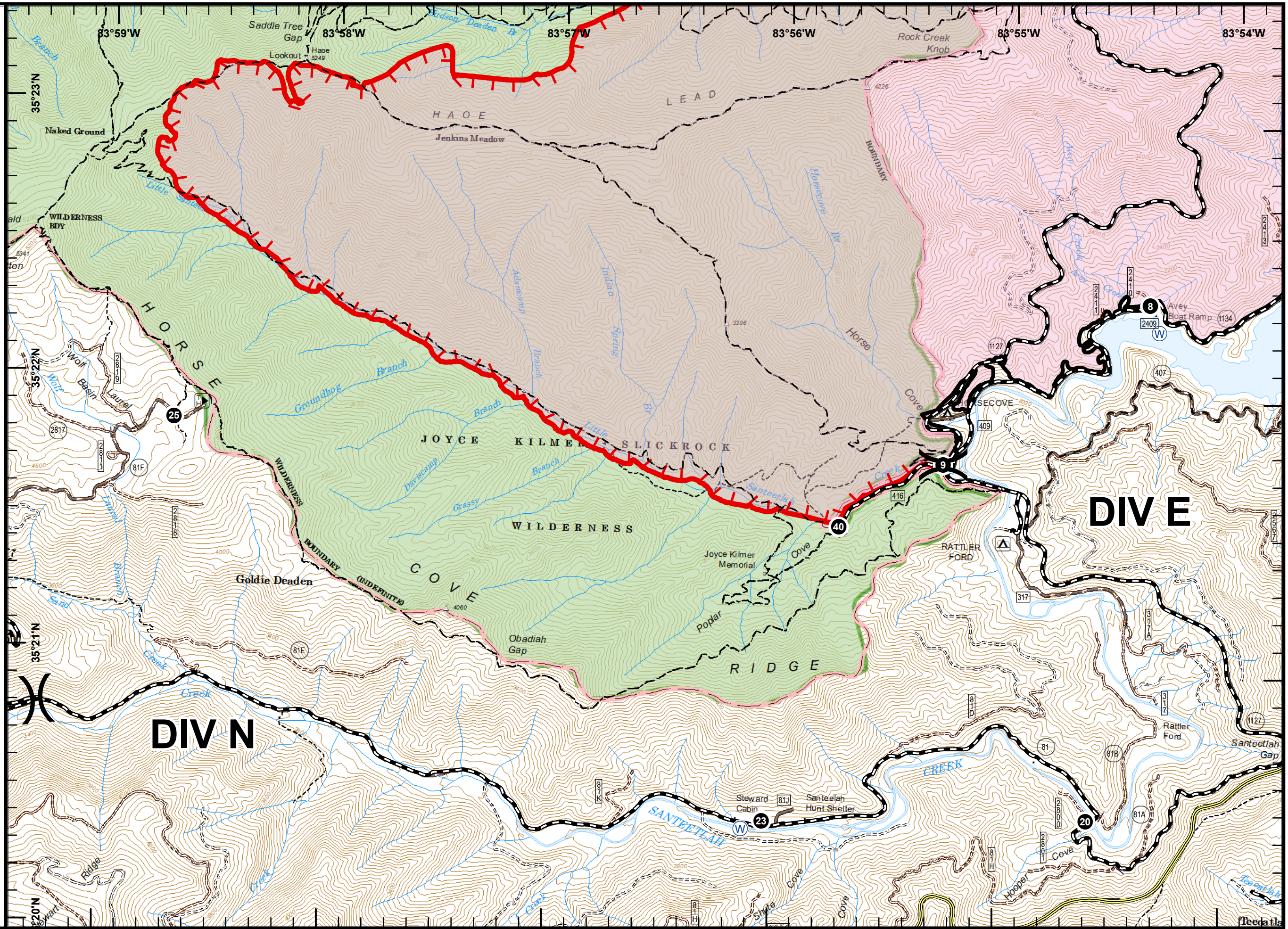
- (X) Division Break
- Drop Point
- (W) Water Source
- Completed Line
- Uncontrolled Fire Edge
- - - US Forest Service Trails
- ~ Minor Roads
- US Forest Service Roads



40 ft Contours
NAD 83 UTM 17

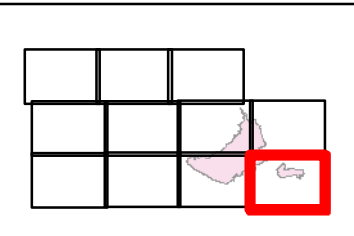


mrh
November 15, 2016
2130 Hours

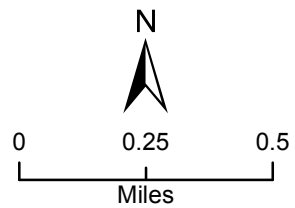


Maple Springs Fire
 NC-NCF-160295
 11/16/2016
 Day
 Map Page 11

- Legend**
- (X) Division Break
 - Drop Point
 - Helispot
 - (W) Water Source
 - ~ Completed Line
 - ⚡ Dozer Line
 - ⚡ Planned Fire Line
 - - - US Forest Service Trails
 - ~ Minor Roads
 - ~ US Forest Service Roads



40 ft Contours
 NAD 83 UTM 17



mrh
 November 15, 2016
 2130 Hours

