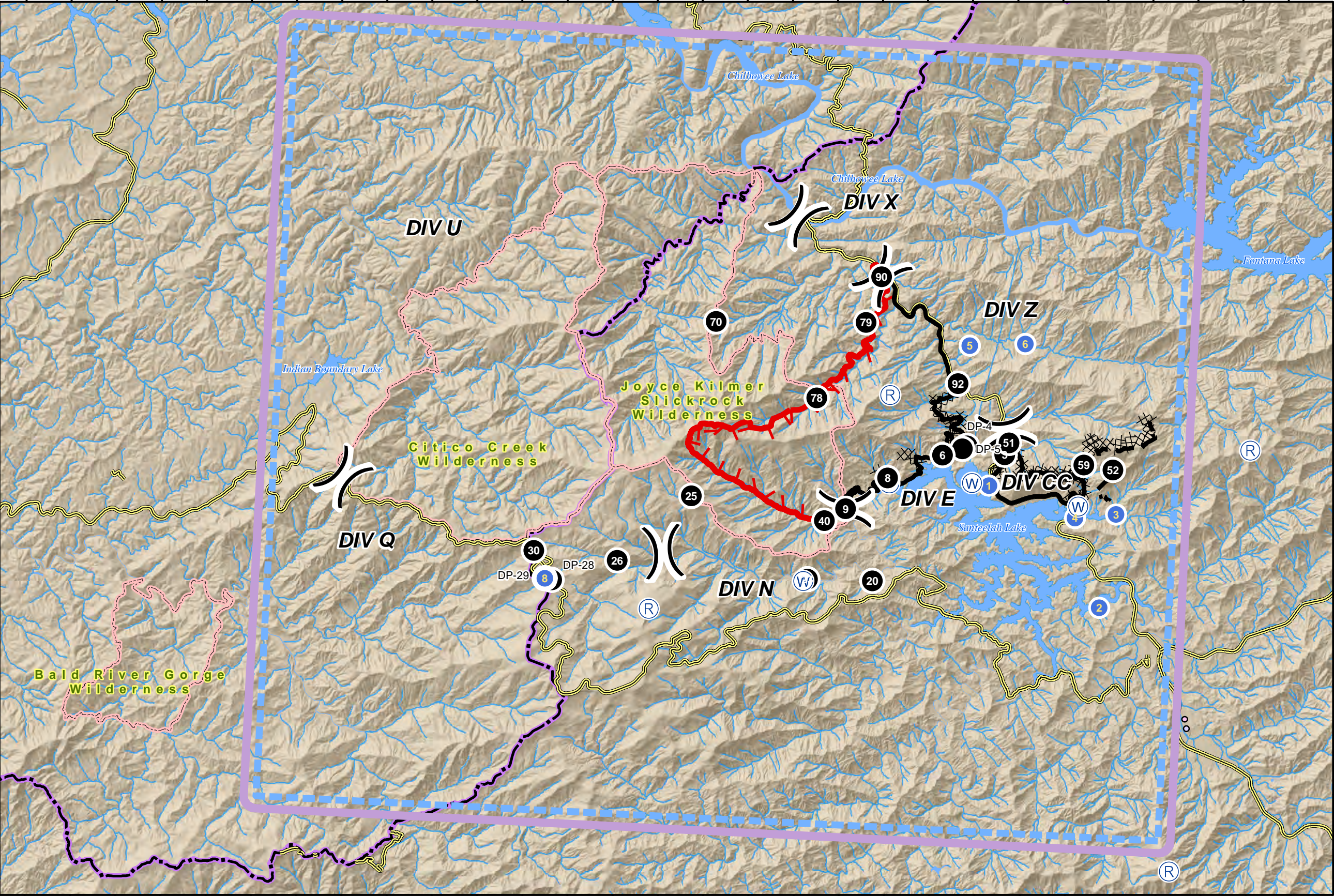


**MAPLE SPRINGS FIRE**  
 NC-NCF-160295  
**AIR OPERATIONS**  
 11/17/2016  
 Day

- Completed Line
- Dozer Line
- Planned Fire Line
- Uncontrolled Fire Edge
- TFR
- Division Break
- Drop Point
- Helibase
- Helispot
- ICP
- Repeater
- Water Source



0 0.5 1 2 Miles



**Maple Springs Fire  
NC-NCF-160295  
Air Operations Map**



**Perimeter Data  
Maple Springs 7,705 Acres  
Old Roughy 657 Acres  
Approximate Perimeter as of  
11/14/2016 1830 Hrs.**

11/17/2016  
1:90,000  
NAD83

Fire Point Data Summary							
Fire Name: Maple Springs/ Old Roughy				Fire Number: NC-NCS-160295			
NAME	TYPE	LATITUDE	LONGITUDE	ELEV	DIV	TYPE	OTHER INFO
Robbins Heli Base	Helibase	N35° 18.100'	W83° 47.500'	2060		ALL	Located at ICP
Boat Ramp	H1	N35° 22.300'	W83° 52.120'	1956	E	3	Lake Santeetlah, 1147 Road
Cheoah	H2	N35° 20.184'	W83° 49.552'	2070		3	USFS Station 143 Road
Graham	H3	N35° 21.890'	W83° 49.280'	1953	E	3	East of 126, 1254 Road
Tapoco	H4	N35° 21.790'	W83° 50.180'	1964	E	3	East of 129, Intersection 1144 Road
Yellow Creek	H5	N35° 24.820'	W83° 52.700'	1895	Z	3	East of 129, 1242 Road
Yellow Creek 2	H6	N35° 24.900'	W83° 51.470'	1838	Z	3	East of 129, 1242 Road
Stratton	H8	N35° 20.215'	W84° 1.853'				
CMD-7	R1	N35° 23.855'	W83° 54.410'				
CMD-8	R2	N35° 23.165'	W83° 46.367'				
CMD-9	R3	N35° 19.757'	W83° 59.518'				
FS Joanna Bald	R4	N35° 15.460'	W83° 47.720'				
Drop Point	DP3	N35° 22.869'	W83° 51.802'				
Drop Point	DP4	N35° 23.001'	W83° 52.649'				
Drop Point	DP5	N35° 22.944'	W83° 52.750'				
Drop Point	DP6	N35° 22.810'	W83° 53.184'				
Drop Point	DP8	N35° 22.348'	W83° 54.375'				
Drop Point	DP9	N35° 21.748'	W83° 55.274'				
Drop Point	DP20	N35° 20.466'	W83° 54.596'				
Drop Point	DP23	N35° 20.435'	W83° 56.036'				
Drop Point	DP25	N35° 21.847'	W83° 58.696'				
Drop Point	DP26	N35° 20.606'	W84° 0.269'				
Drop Point	DP28	N35° 20.190'	W84° 1.702'				
Drop Point	DP29	N35° 20.215'	W84° 1.853'				
Drop Point	DP30	N35° 20.709'	W84° 2.131'				
Drop Point	DP40	N35° 21.513'	W83° 55.730'				
Drop Point	DP51	N35° 23.091'	W83° 51.725'				
Drop Point	DP52	N35° 22.692'	W83° 49.392'				
Drop Point	DP59	N35° 22.754'	W83° 50.042'				
Drop Point	DP70	N35° 25.031'	W83° 58.345'				
Drop Point	DP78	N35° 23.735'	W83° 56.030'				
Drop Point	DP79	N35° 25.151'	W83° 55.023'				
Drop Point	DP90	N35° 25.990'	W83° 54.725'				
Drop Point	DP92	N35° 24.119'	W83° 52.918'				
East Lake	W1	N35° 22.330'	W83° 52.500'				
West Lake	W2	N35° 22.250'	W83° 54.330'				
Finger Dip	W3	N35° 22.000'	W83° 50.120'				
							11/16/2016 1800Hrs.