

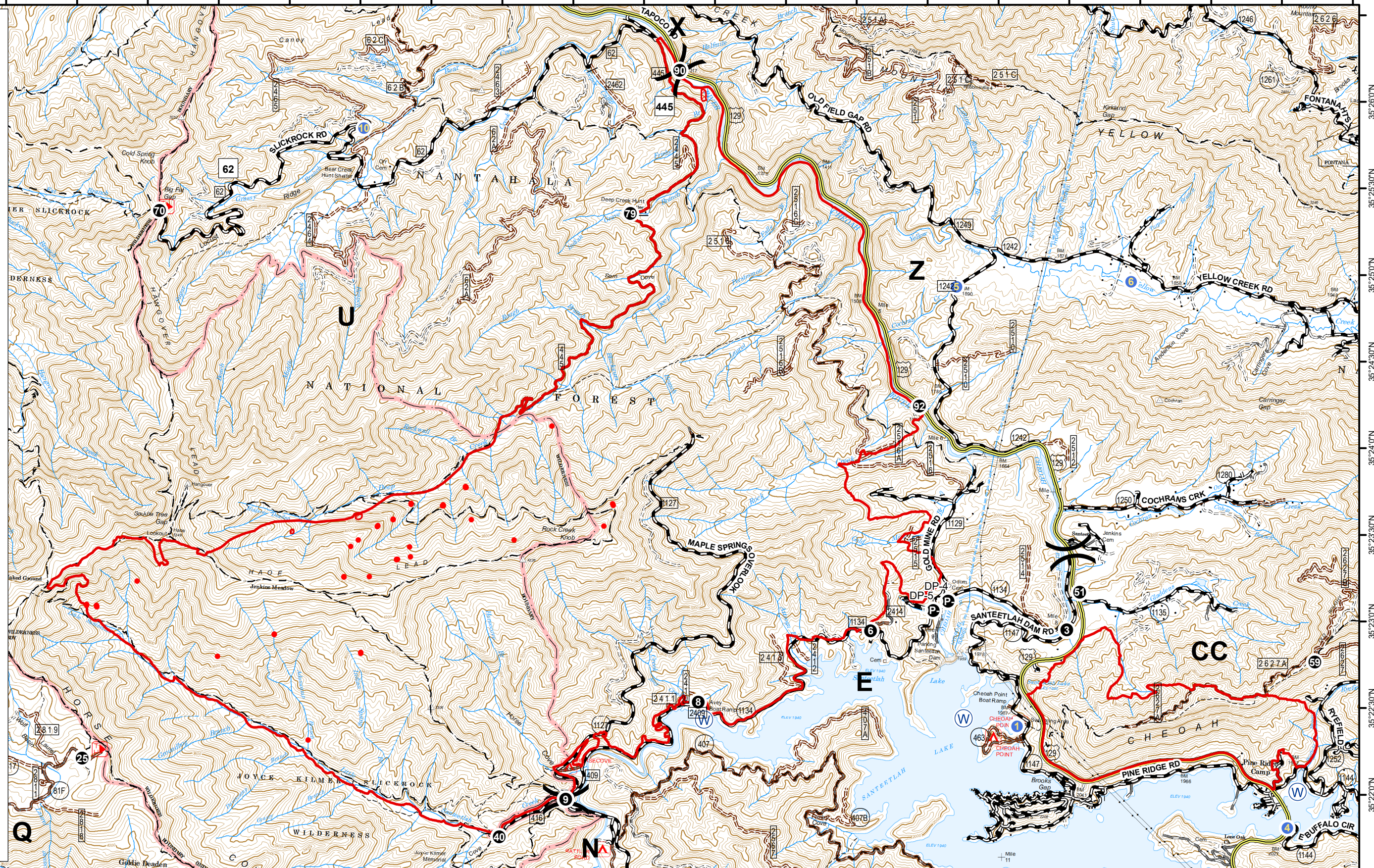
Maple Springs Fire NC-NCF-160295 IR Map

11-19-2016 Day
Scale 1:40,000

- Legend**
- (X) Division Break
 - Drop Point
 - (H) Helibase
 - Helispot
 - ▣ ICP
 - (R) Repeater
 - (W) Water Source
 - ▬ Major Roads
 - ▬ Minor Roads
 - ▬ US Forest Service Roads
 - - US Forst Service Trails
 - ▭ Sand Creek Units
 - IR Isolated Heat
 - ▭ IR Heat Perimeter
 - ▭ IR bScattered Heat
 - ▭ IR Intense Heat

Perimeter Data:
Maple Springs 7,788 Acres
Old Roughy 658 Acres
11/18/2016
2315 Hrs. EST.

40 ft Contours
NAD 83
RLM



84°0'30"W 84°0'0"W 83°59'30"W 83°59'0"W 83°58'30"W 83°58'0"W 83°57'30"W 83°57'0"W 83°56'30"W 83°56'0"W 83°55'30"W 83°55'0"W 83°54'30"W 83°54'0"W 83°53'30"W 83°53'0"W 83°52'30"W 83°52'0"W 83°51'30"W 83°51'0"W 83°50'30"W 83°50'0"W

35°26'0"N 35°25'30"N 35°25'0"N 35°24'30"N 35°24'0"N 35°23'30"N 35°23'0"N 35°22'30"N 35°22'0"N 35°21'30"N 35°21'0"N