



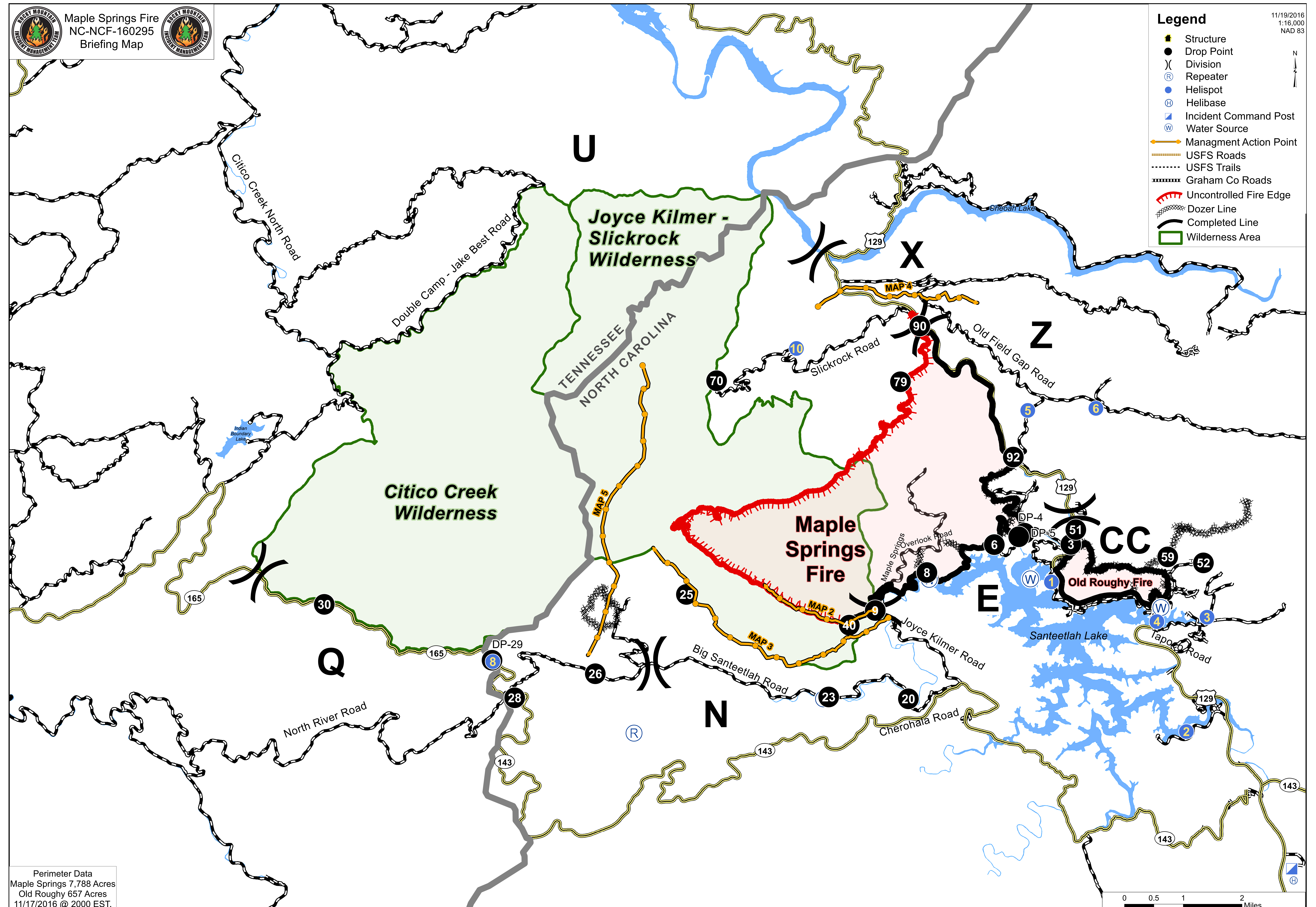
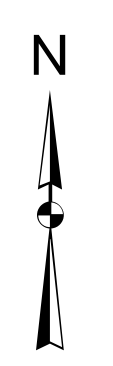
Maple Springs Fire  
 NC-NCF-160295  
 Briefing Map



**Legend**

- Structure
- Drop Point
- Division
- Repeater
- Helispot
- Helibase
- Incident Command Post
- Water Source
- Management Action Point
- USFS Road
- USFS Trails
- Graham Co Roads
- Uncontrolled Fire Edge
- Dozer Line
- Completed Line
- Wilderness Area

11/19/2016  
 1:16,000  
 NAD 83



Perimeter Data  
 Maple Springs 7,788 Acres  
 Old Roughy 657 Acres  
 11/17/2016 @ 2000 EST.

