







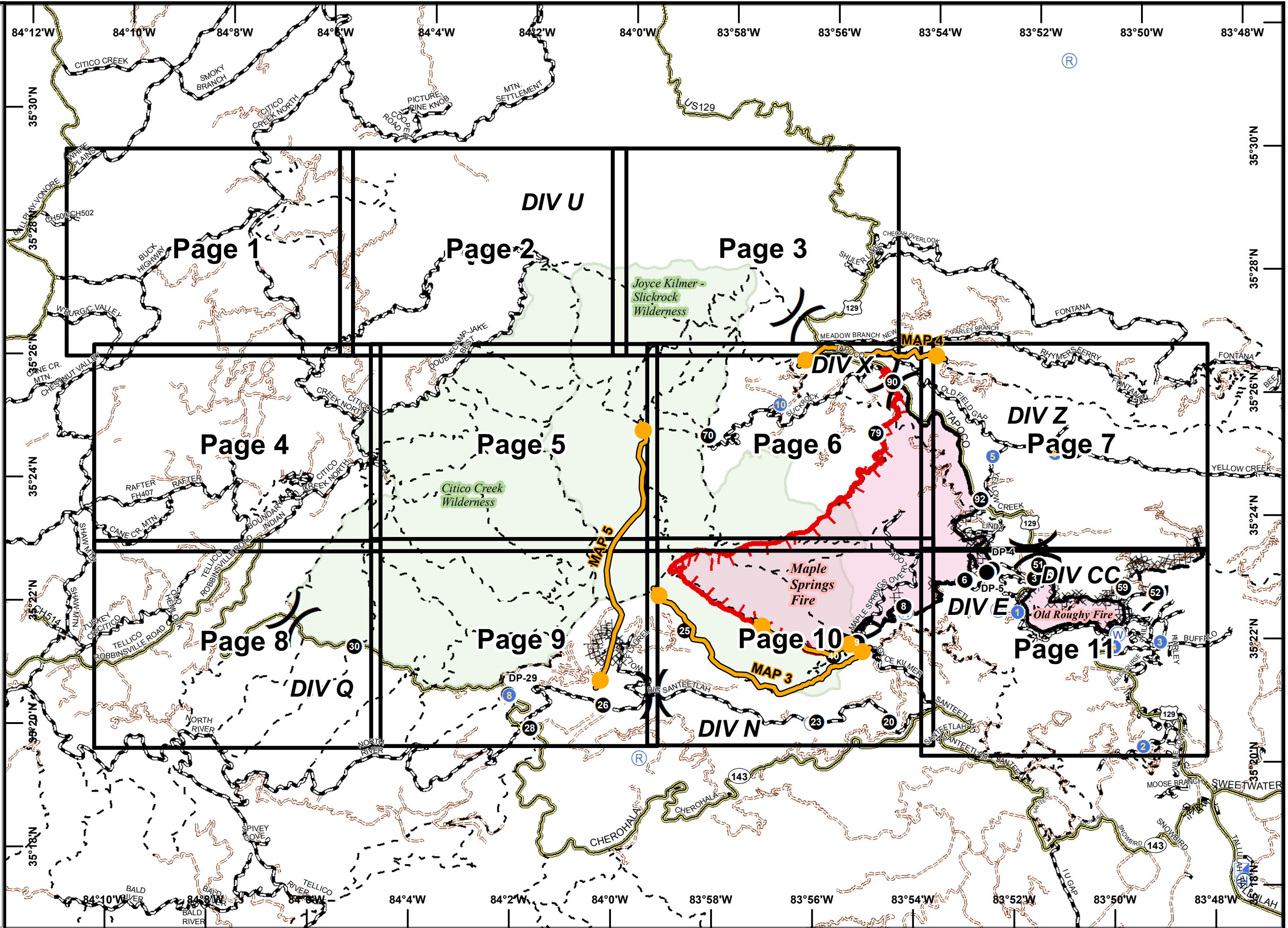
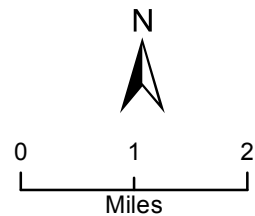
# Page Grid Index Map

**Maple Springs Fire**  
NC-NCF-160295  
11/19/2016  
Day

Maple Springs 7,788 Acres  
Old Roughy 657 Acres  
Approximate Perimeter as of  
11/17/2016 @ 2100 Hrs.

## Legend

-  Division Break
-  Drop Point
-  Helibase
-  Helispot
-  ICP
-  Repeater
-  Water Source
-  Completed Line
-  Dozer Line
-  Planned Fire Line
-  Uncontrolled Fire Edge
-  US Forest Service Trails
-  Management Action Point
-  Major Roads
-  Minor Roads
-  US Forest Service Roads



# Maple Springs Fire





NC-NCF-160295

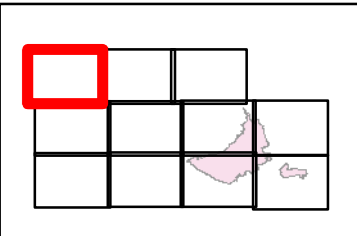
11/19/2016

Day

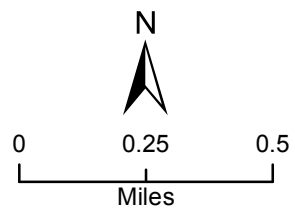
Map Page 1

## Legend

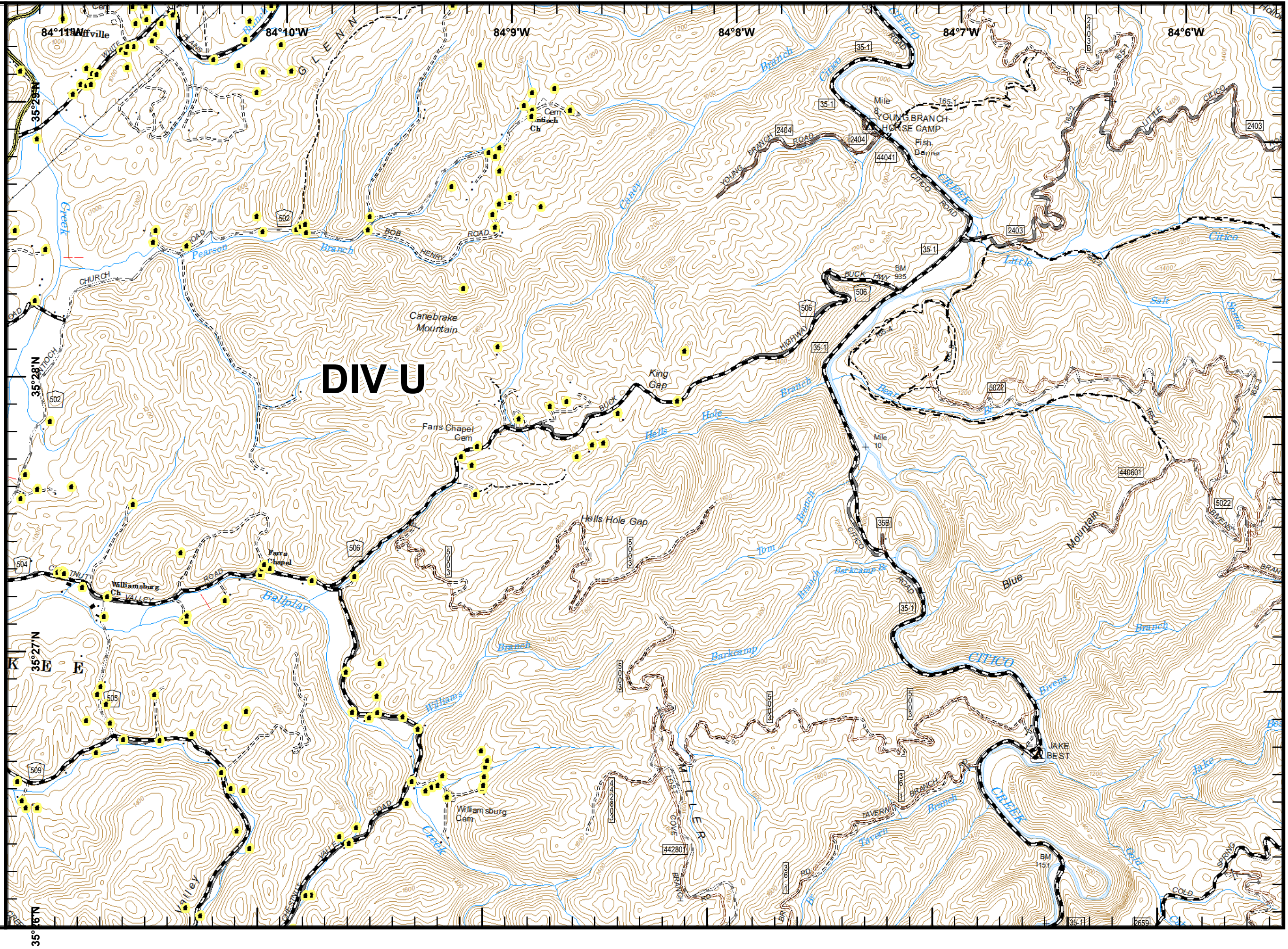
-  Division Break
-  Management Action Point
-  Major Roads
-  Structures






40 ft Contours  
NAD 83 UTM 17

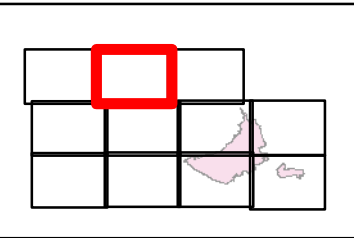


mrh  
November 17, 2016  
2130 Hours

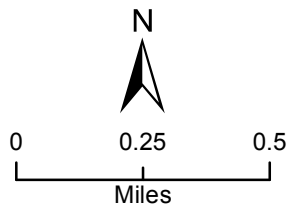


**Maple Springs Fire**  
 NC-NCF-160295  
 11/19/2016  
 Day  
 Map Page 2

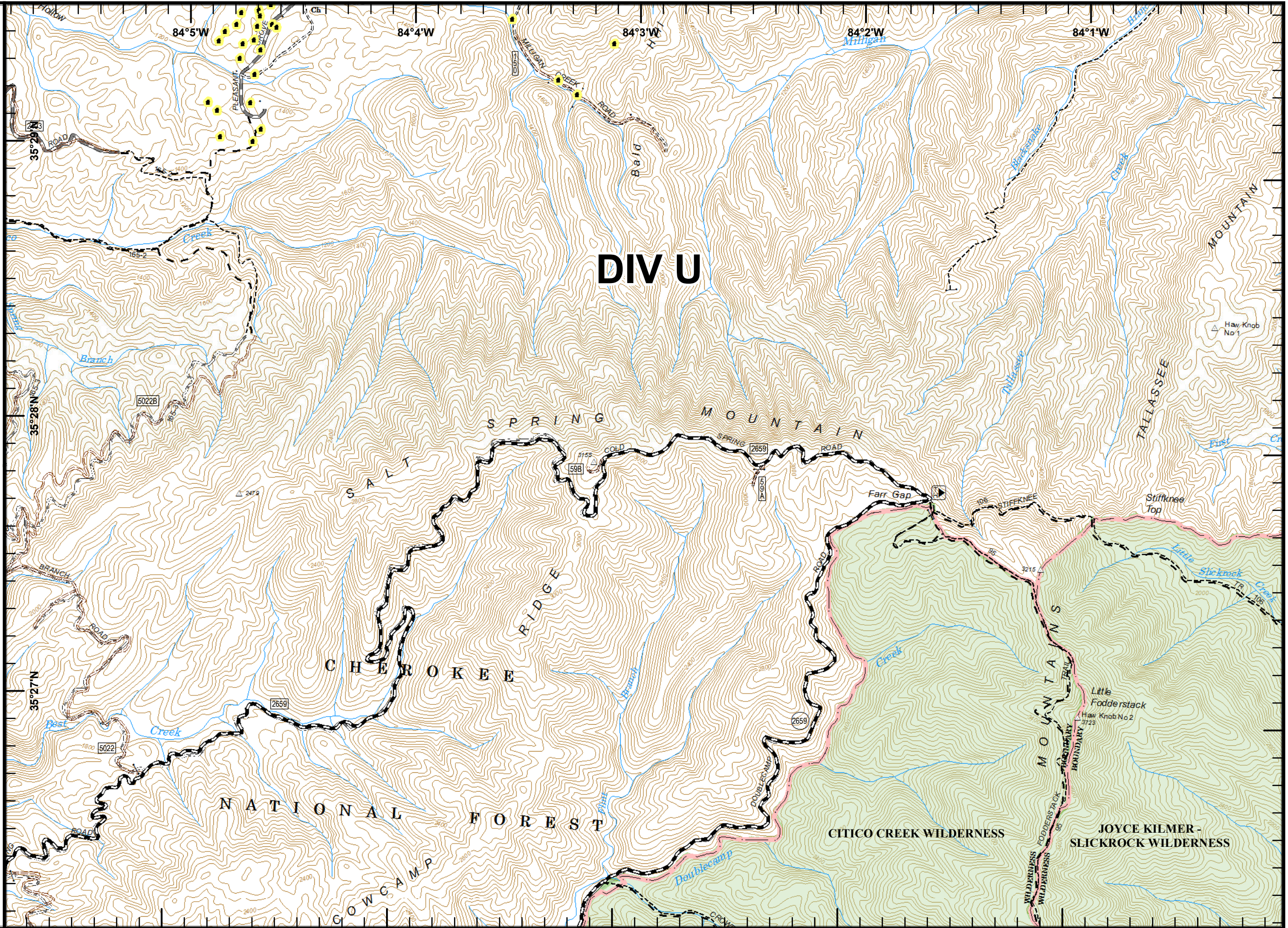
- Legend**
-  Division Break
  -  Management Action Point
  -  Structures










40 ft Contours  
 NAD 83 UTM 17

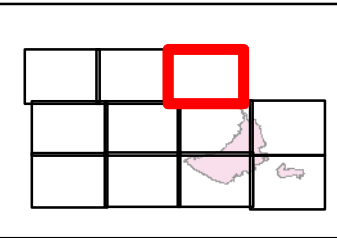


mrh  
 November 17, 2016  
 2130 Hours

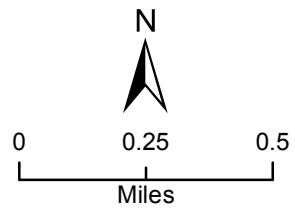


**Maple Springs Fire**  
 NC-NCF-160295  
 11/19/2016  
 Day  
 Map Page 3

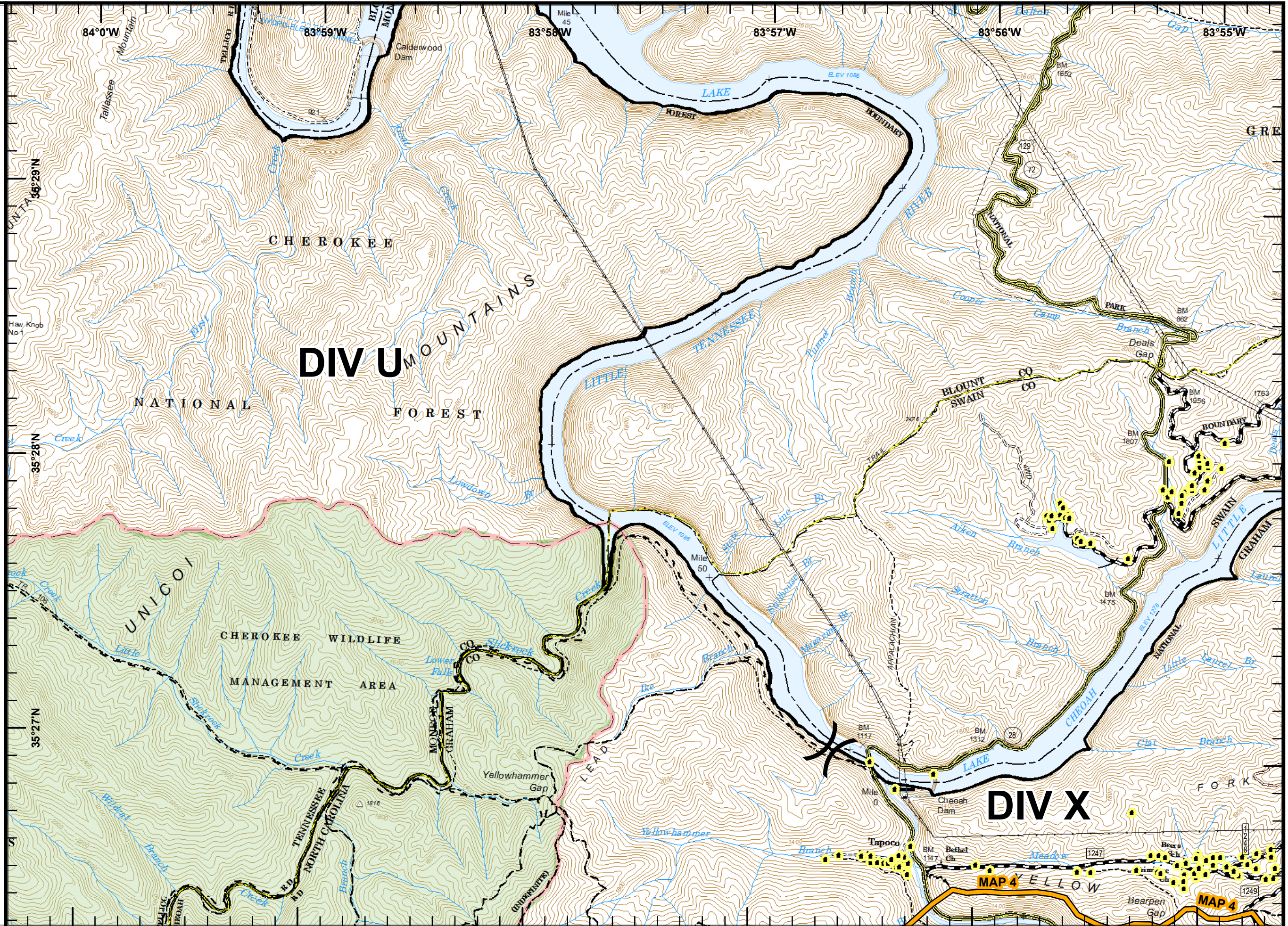
- Legend**
-  Division Break
  -  Management Action Point
  -  US Forest Service Trails
  -  Major Roads
  -  Minor Roads
  -  US Forest Service Roads
  -  Structures







40 ft Contours  
 NAD 83 UTM 17

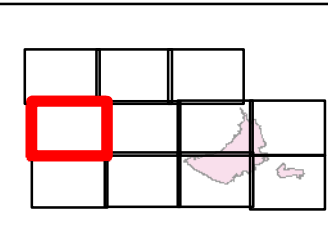


mrh  
 November 17, 2016  
 2130 Hours

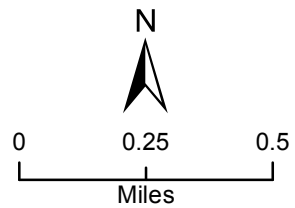


**Maple Springs Fire**  
 NC-NCF-160295  
 11/19/2016  
 Day  
 Map Page 4

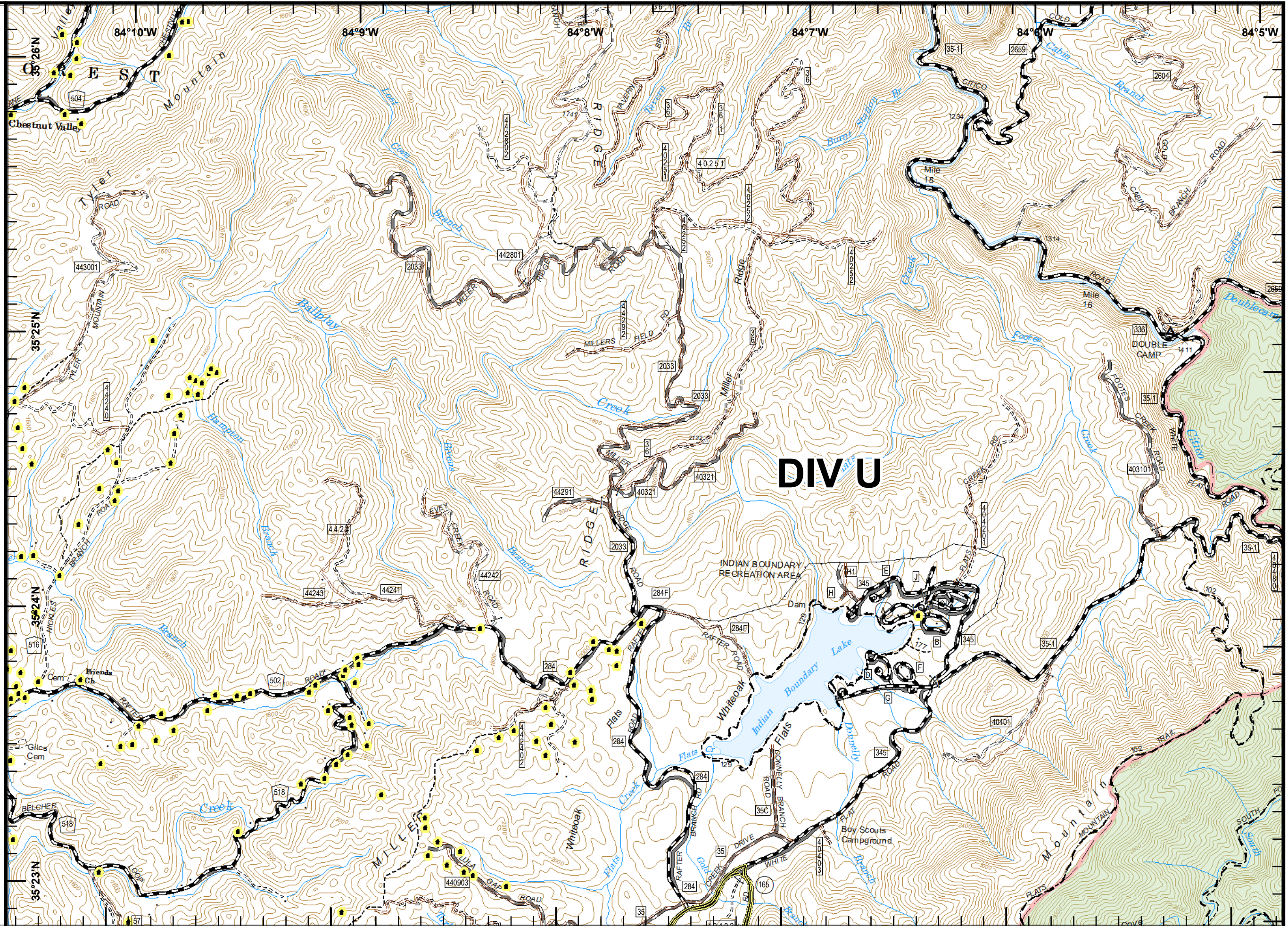
- Legend**
-  Division Break
  -  Management Action Point
  -  Major Roads
  -  Structures



40 ft Contours  
 NAD 83 UTM 17



mrh  
 November 17, 2016  
 2130 Hours



# Maple Springs Fire




NC-NCF-160295

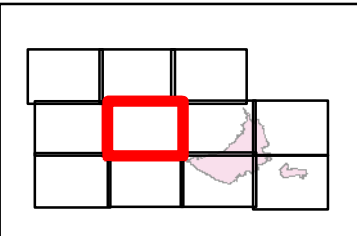
11/19/2016

Day

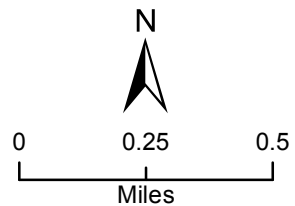
Map Page 5

### Legend

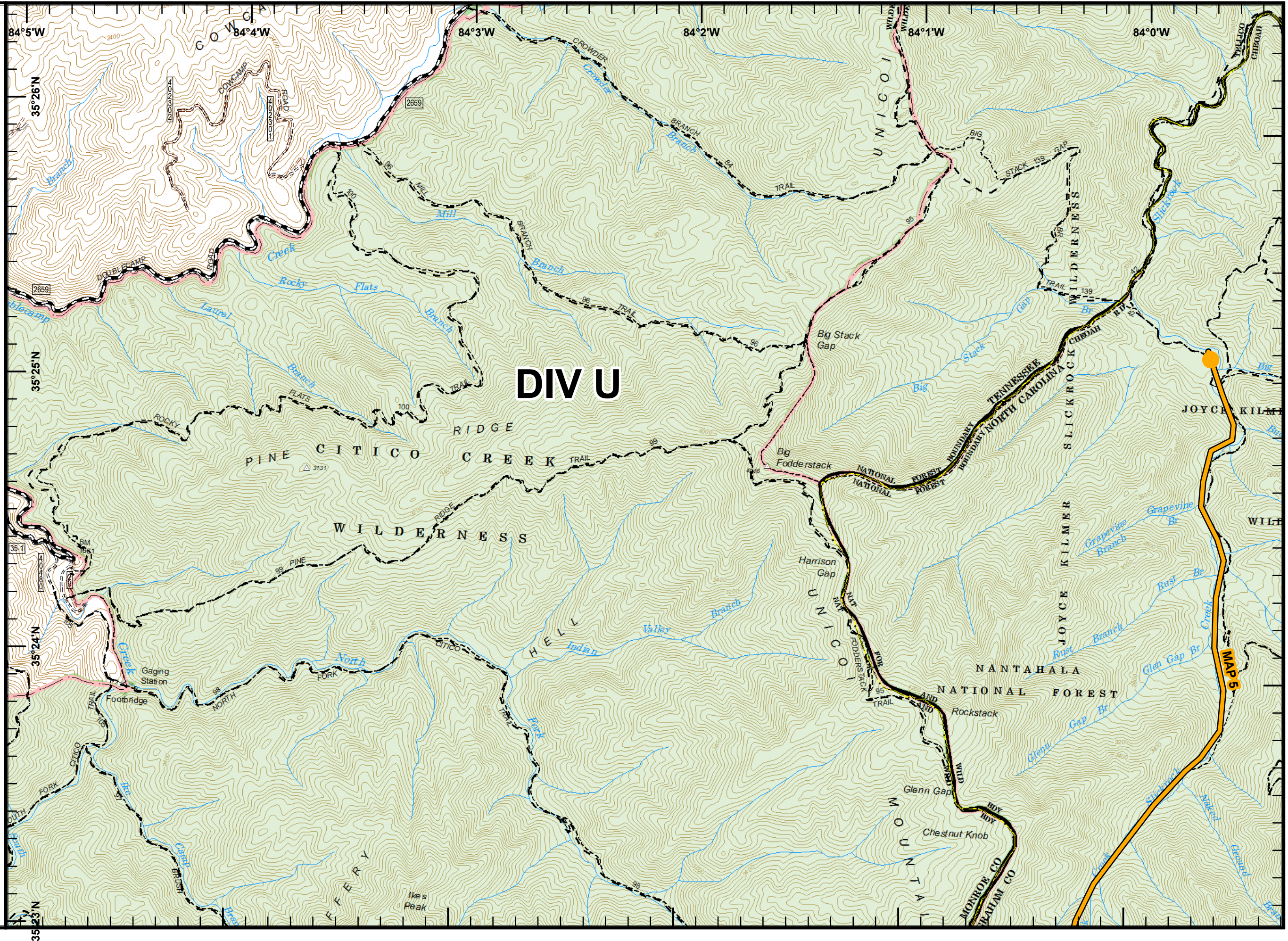
-  Division Break
-  Management Action Point
-  US Forest Service Trails



40 ft Contours  
NAD 83 UTM 17



mrh  
November 17, 2016  
2130 Hours



# Maple Springs Fire

NC-NCF-160295

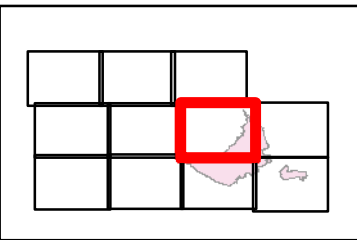
11/19/2016

Day

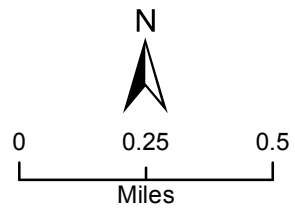
Map Page 6

## Legend

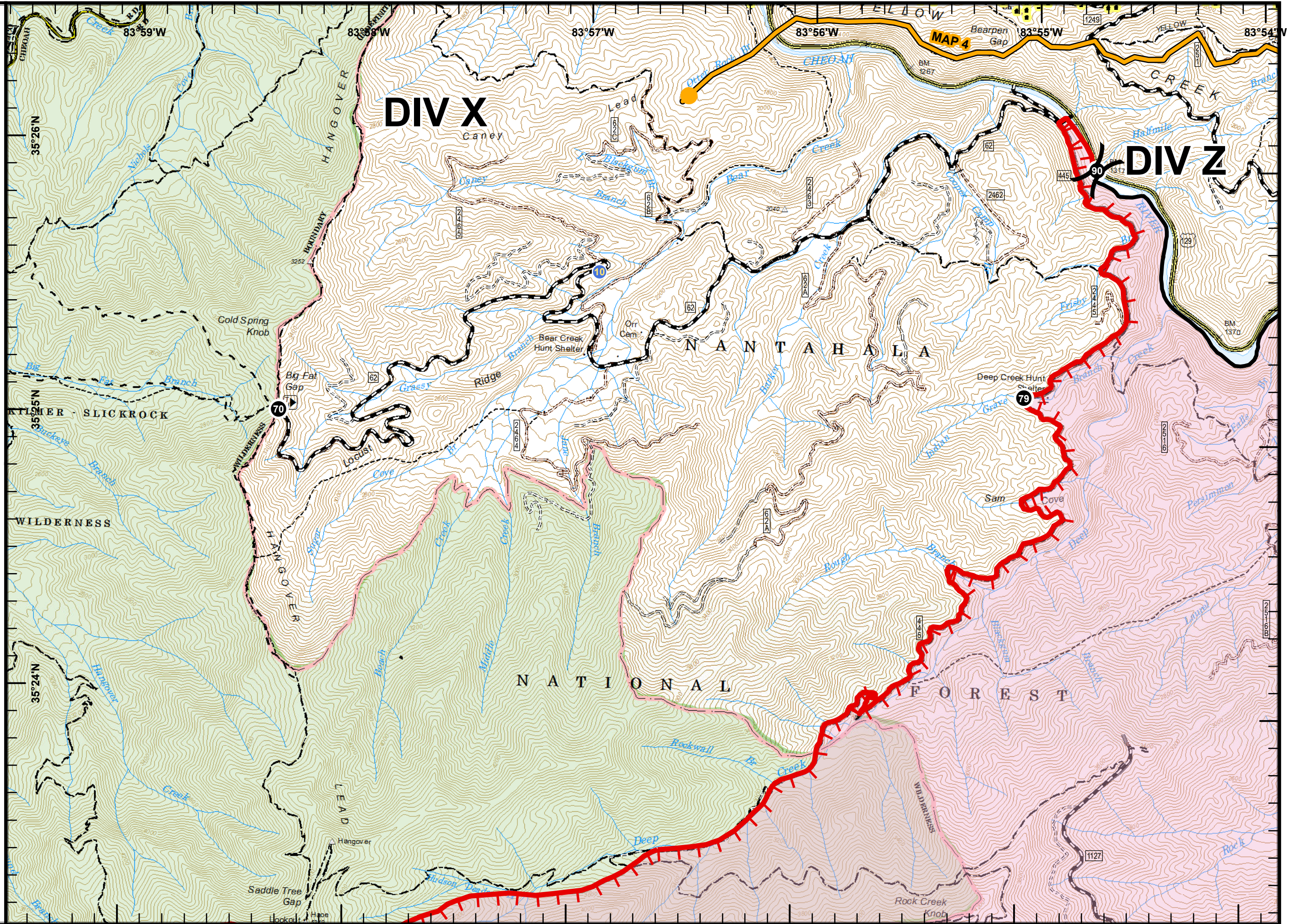
-  Division Break
-  Drop Point
-  Helispot
-  Completed Line
-  Uncontrolled Fire Edge
-  Management Action Point
-  US Forest Service Trails
-  Minor Roads
-  US Forest Service Roads
-  Structures



40 ft Contours  
NAD 83 UTM 17

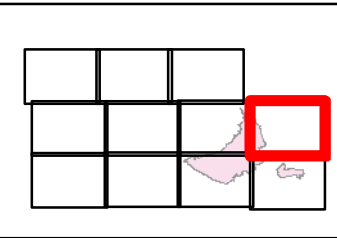


mrh  
November 17, 2016  
2130 Hours

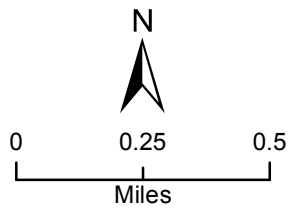


**Maple Springs Fire**  
 NC-NCF-160295  
 11/19/2016  
 Day  
 Map Page 7

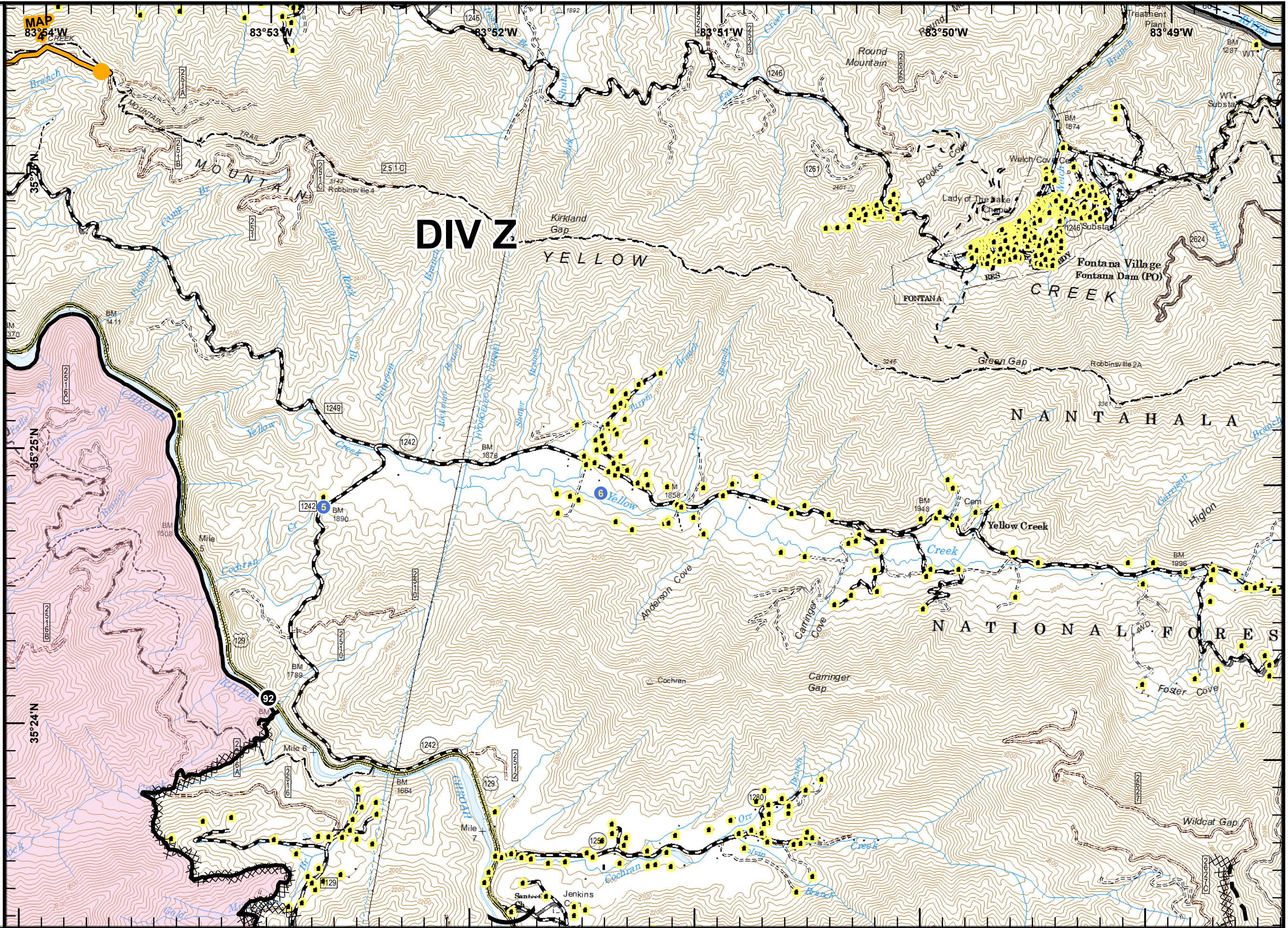
- Legend**
- (X) Division Break
  - Drop Point
  - Helispot
  - Completed Line
  - ⊥ Dozer Line
  - Planned Fire Line
  - Management Action Point
  - US Forest Service Trails
  - Minor Roads
  - US Forest Service Roads
  - Structures



40 ft Contours  
 NAD 83 UTM 17








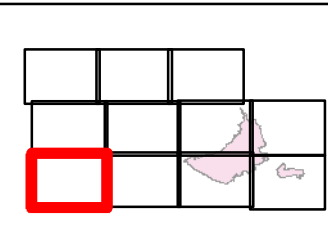
mrh  
 November 17, 2016  
 2130 Hours



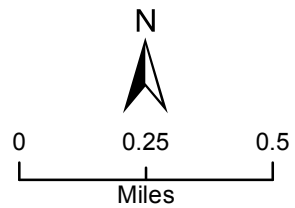


**Maple Springs Fire**  
 NC-NCF-160295  
 11/19/2016  
 Day  
 Map Page 8

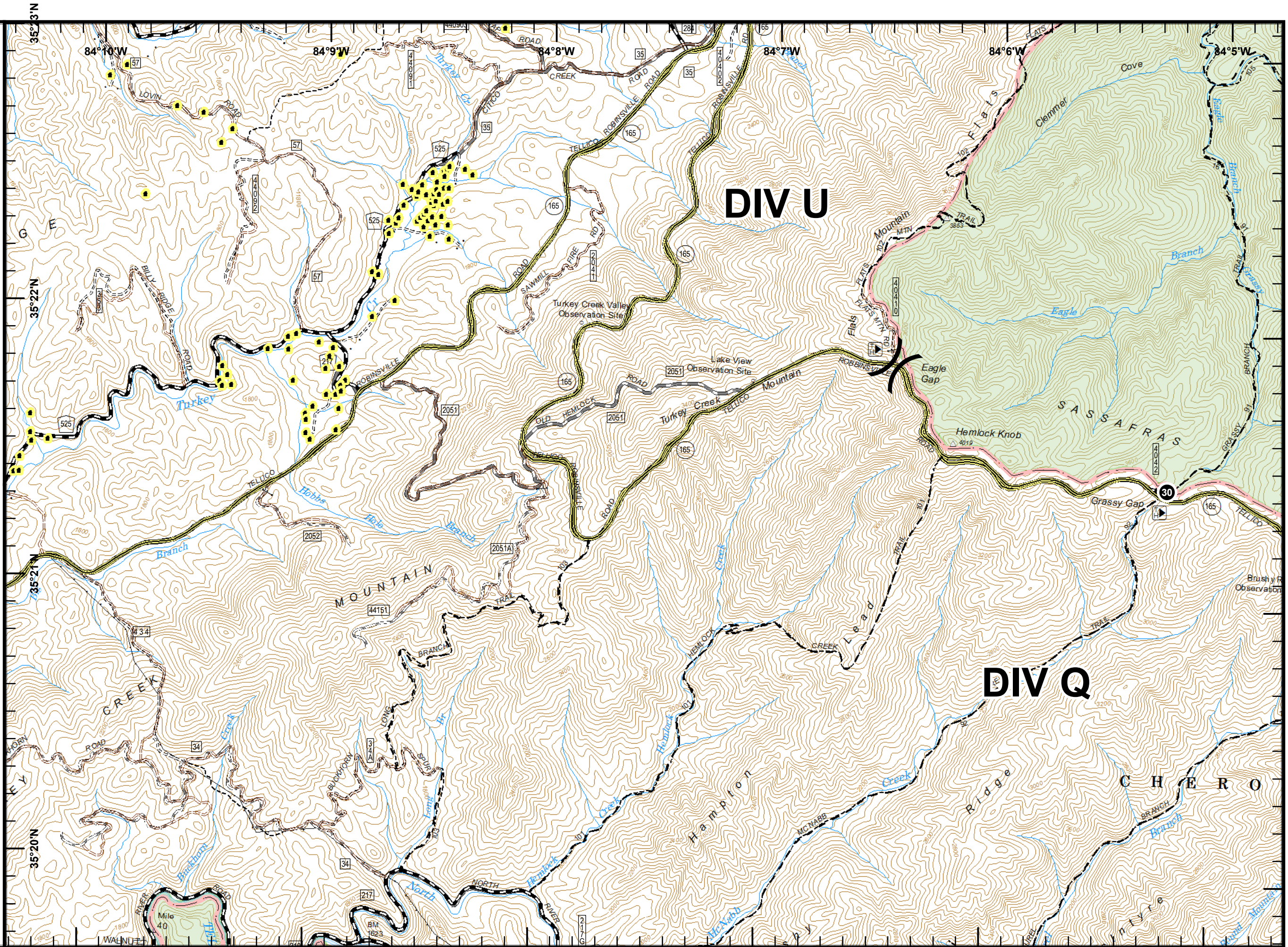
- Legend**
-  Division Break
  -  Drop Point
  -  Management Action Point
  -  Major Roads
  -  Structures



40 ft Contours  
 NAD 83 UTM 17



mrh  
 November 17, 2016  
 2130 Hours



# Maple Springs Fire

NC-NCF-160295

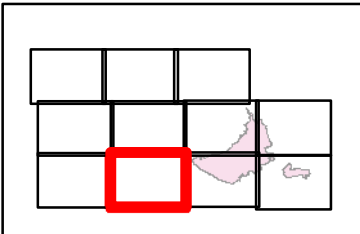
11/19/2016

Day

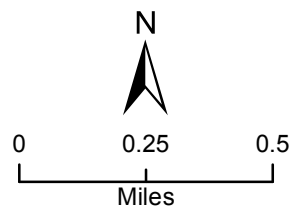
Map Page 9

## Legend

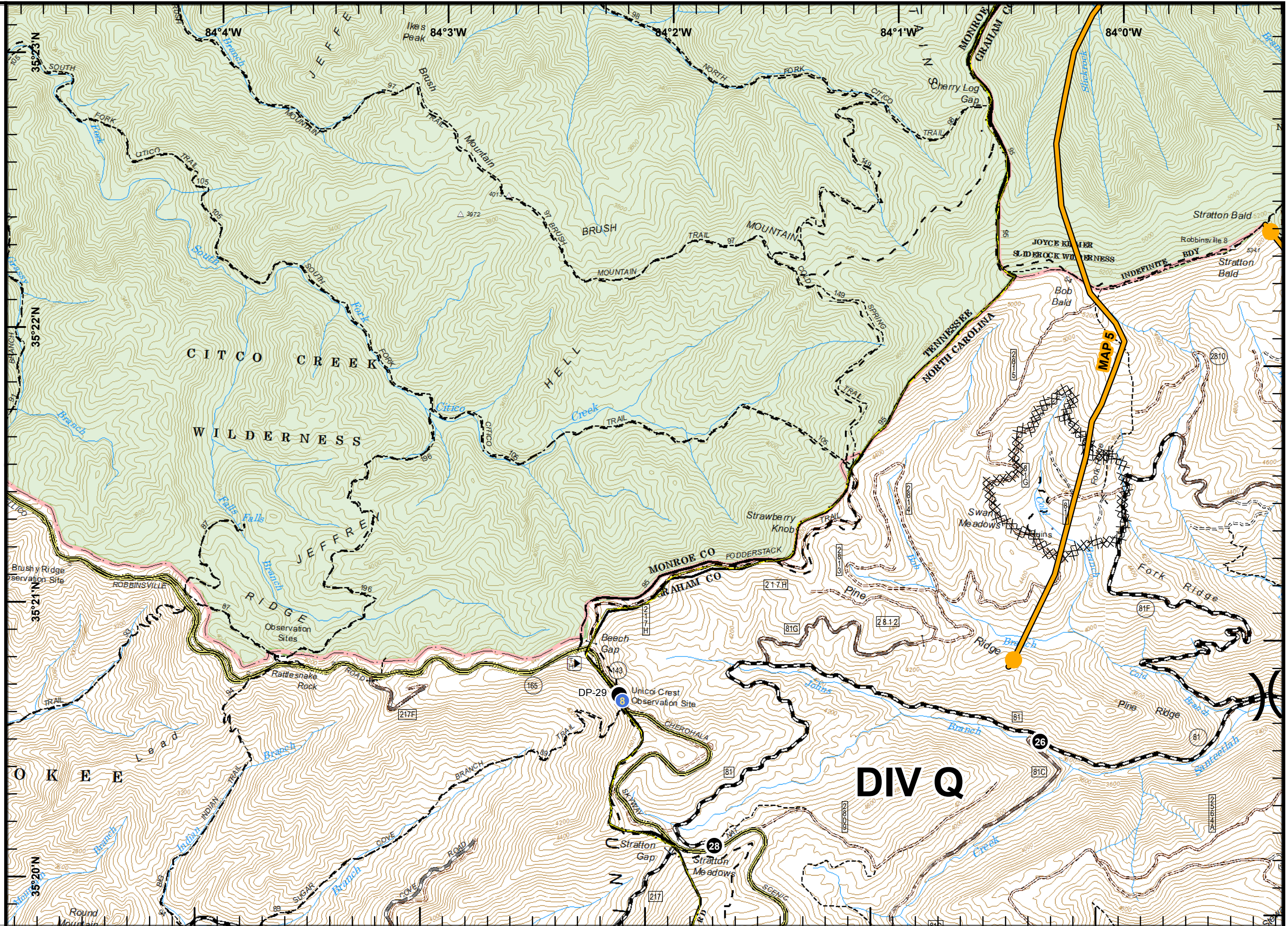
-  Division Break
-  Drop Point
-  Helispot
-  Dozer Line
-  Management Action Point
-  US Forest Service Trails
-  Major Roads
-  Minor Roads
-  US Forest Service Roads



40 ft Contours  
NAD 83 UTM 17



mh  
November 17, 2016  
2130 Hours



# Maple Springs Fire

NC-NCF-160295

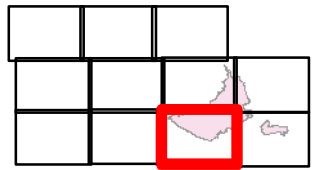
11/19/2016

Day

Map Page 10

## Legend

- (X) Division Break
- Drop Point
- (W) Water Source
- ~ Completed Line
- ⊞ Dozer Line
- 🔴 Uncontrolled Fire Edge
- Management Action Point
- - - US Forest Service Trails
- ~ Minor Roads
- US Forest Service Roads
- Structures



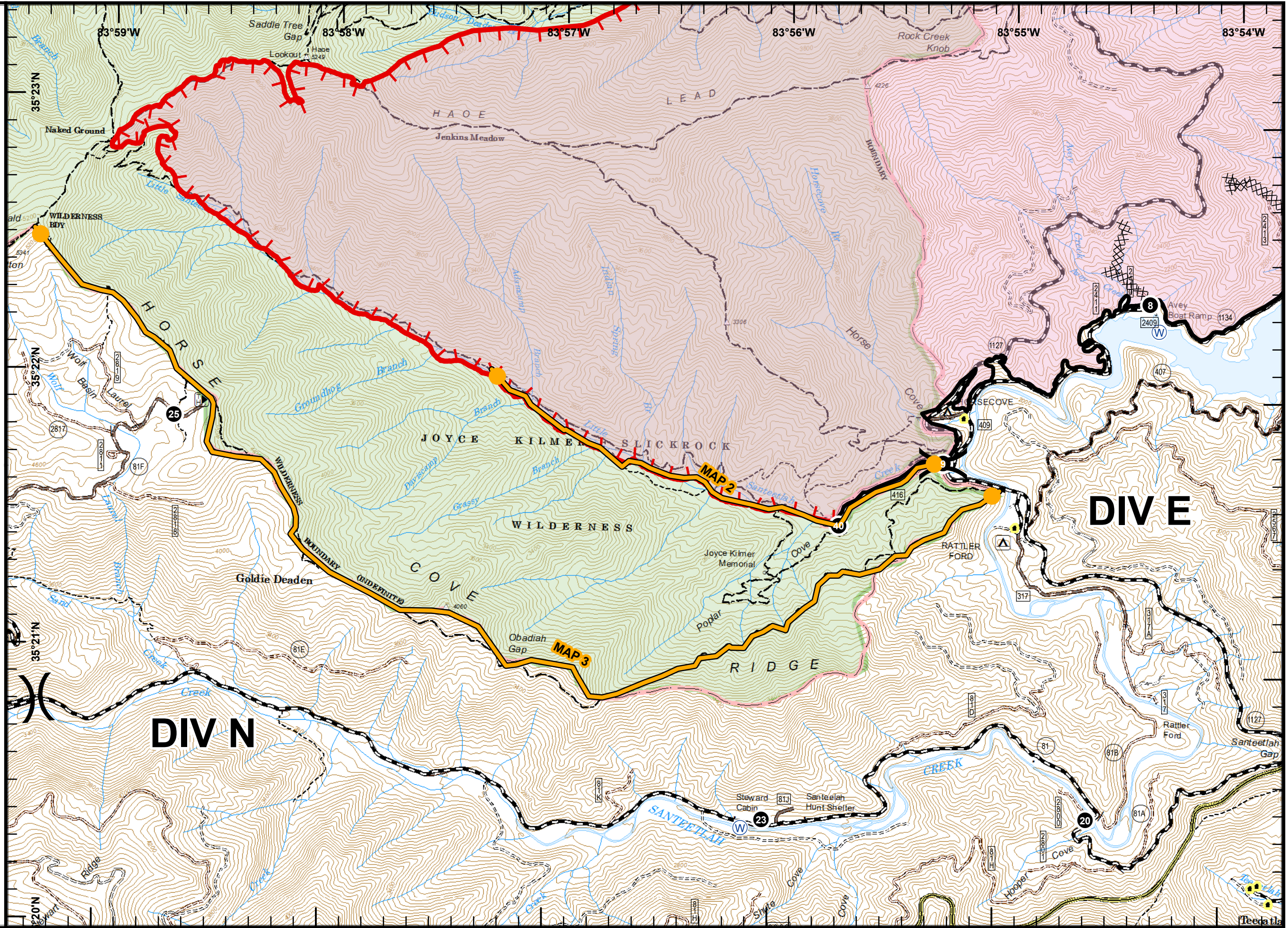
40 ft Contours  
NAD 83 UTM 17



0 0.25 0.5  
Miles

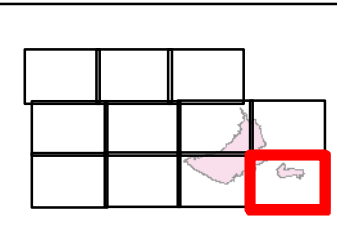


mrh  
November 17, 2016  
2130 Hours

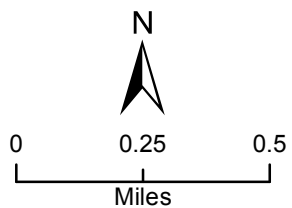


**Maple Springs Fire**  
 NC-NCF-160295  
 11/19/2016  
 Day  
 Map Page 11

- Legend**
- (X) Division Break
  - Drop Point
  - Helispot
  - (W) Water Source
  - Completed Line
  - ⊞ Dozer Line
  - Planned Fire Line
  - Management Action Point
  - - - US Forest Service Trails
  - Minor Roads
  - US Forest Service Roads
  - Structures



40 ft Contours  
 NAD 83 UTM 17



mrh  
 November 17, 2016  
 2130 Hours

