



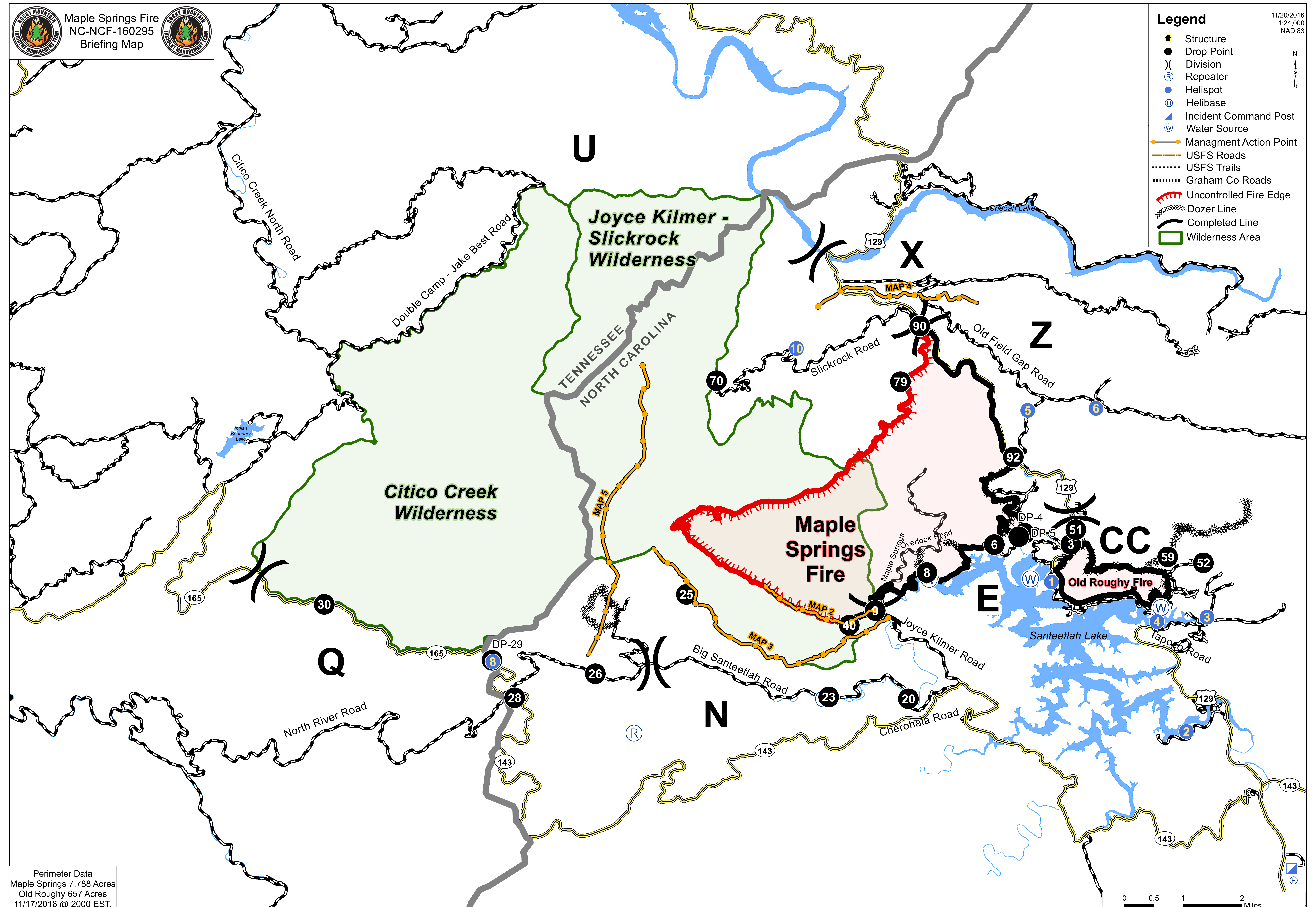
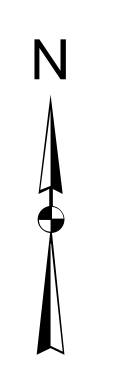
Maple Springs Fire
 NC-NCF-160295
 Briefing Map



Legend

- Structure
- Drop Point
- Division
- Repeater
- Helispot
- Helibase
- Incident Command Post
- Water Source
- Management Action Point
- USFS Roads
- USFS Trails
- Graham Co Roads
- Uncontrolled Fire Edge
- Dozer Line
- Completed Line
- Wilderness Area

11/20/2016
 1:24,000
 NAD 83



Perimeter Data
 Maple Springs 7,788 Acres
 Old Roughy 657 Acres
 11/17/2016 @ 2000 EST.

