

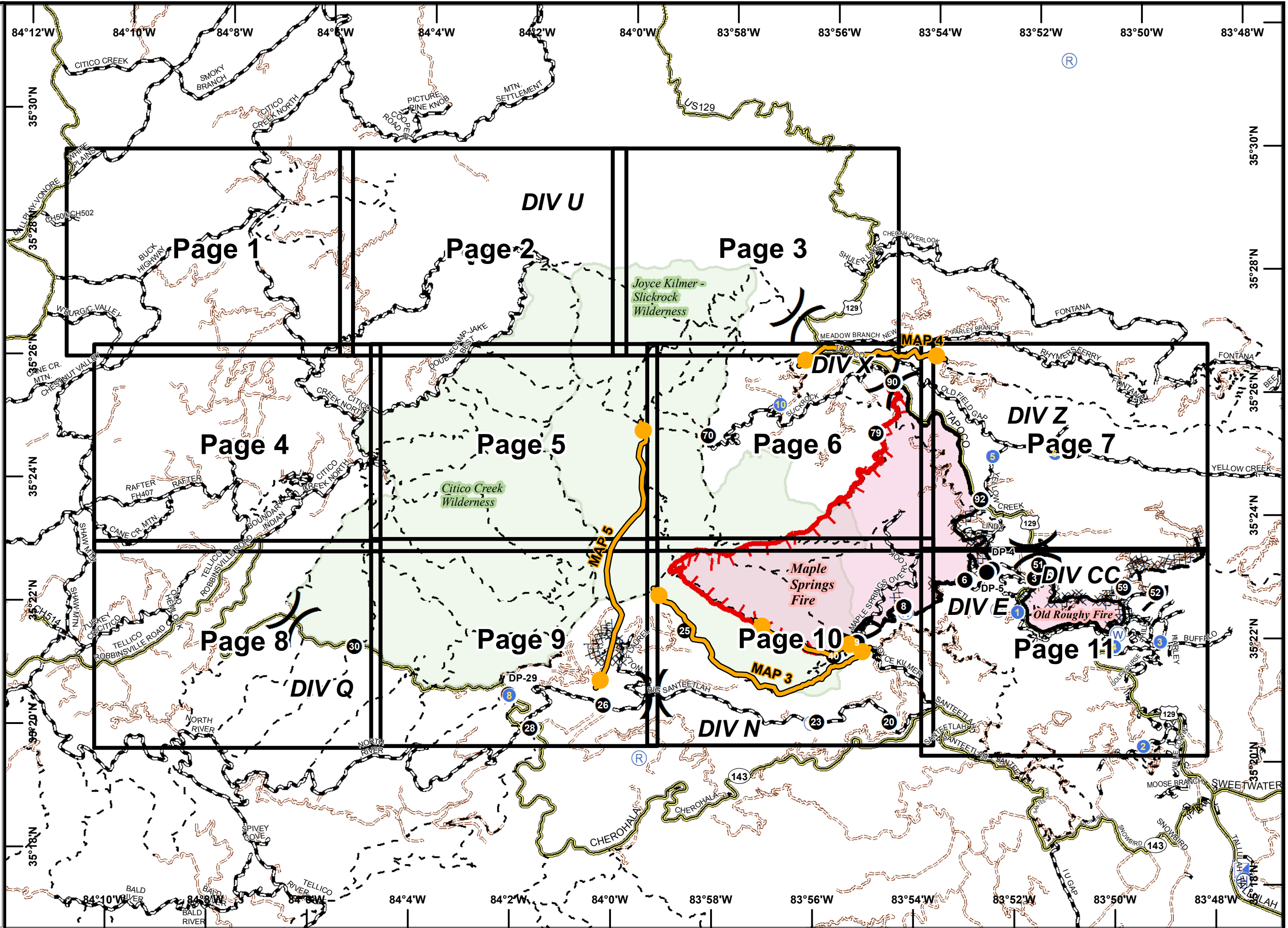
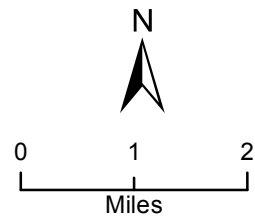
Page Grid Index Map

Maple Springs Fire
NC-NCF-160295
11/20/2016
Day

Maple Springs 7,788 Acres
Old Roughy 657 Acres
Approximate Perimeter as of
11/17/2016 @ 2100 Hrs.

Legend

- () Division Break
- Drop Point
- (H) Helibase
- Helispot
- ▣ ICP
- (R) Repeater
- (W) Water Source
- Completed Line
- XXXX Dozer Line
- Planned Fire Line
- ┌ Uncontrolled Fire Edge
- - - US Forest Service Trails
- Management Action Point
- Major Roads
- Minor Roads
- - - US Forest Service Roads



Maple Springs Fire

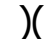



NC-NCF-160295

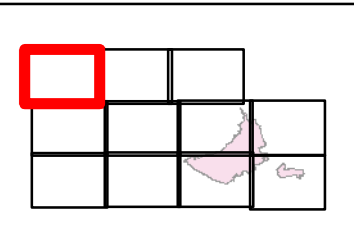
11/20/2016

Day

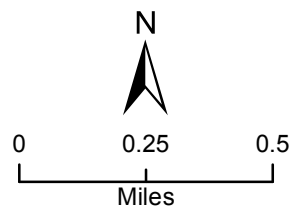
Map Page 1

Legend

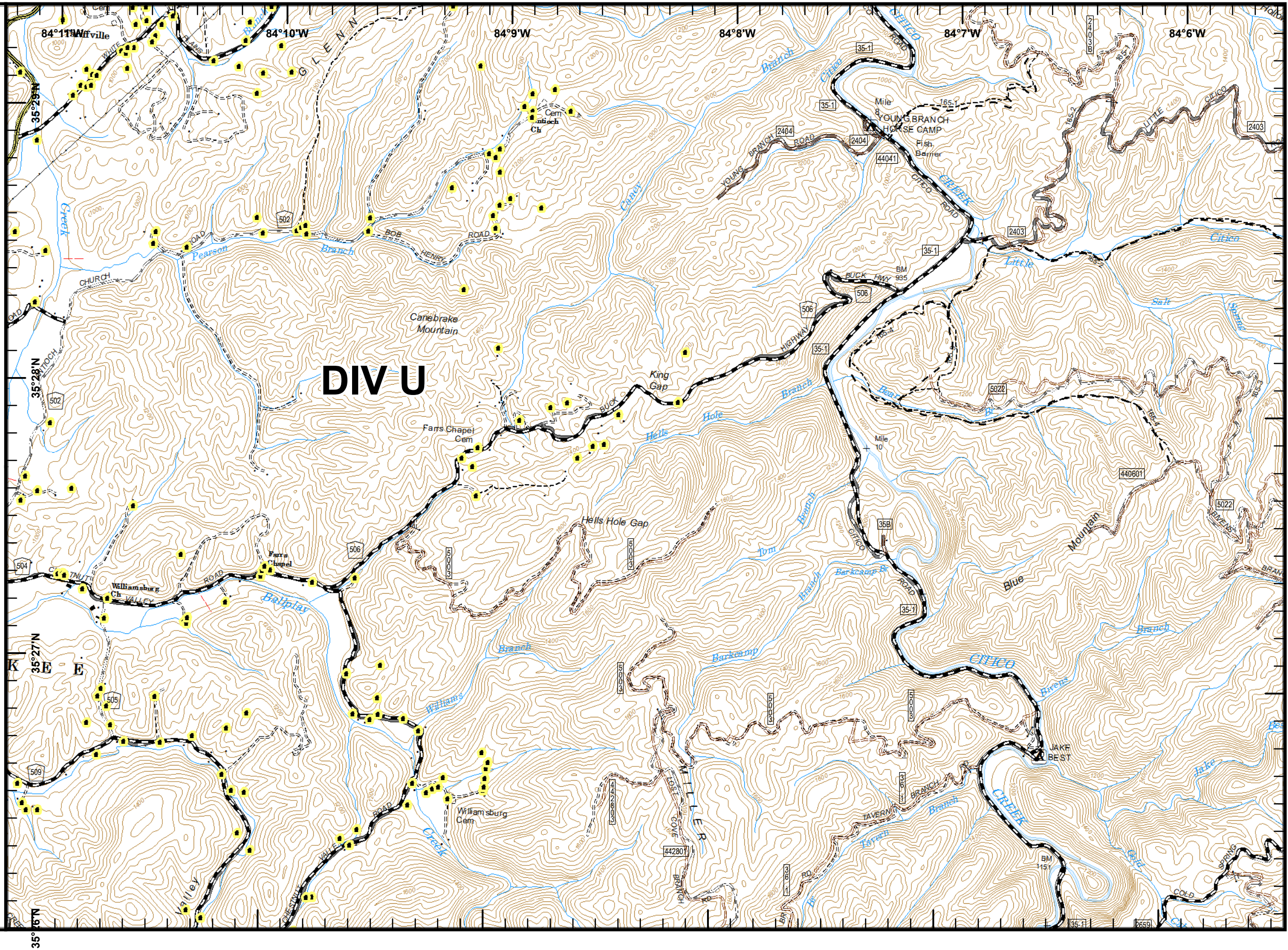
-  Division Break
-  Management Action Point
-  Major Roads
-  Structures






40 ft Contours
NAD 83 UTM 17

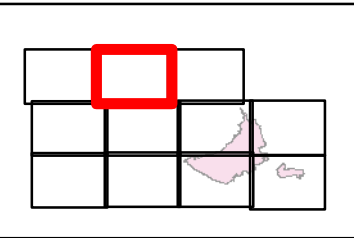


mrh
November 19, 2016
2100 Hours

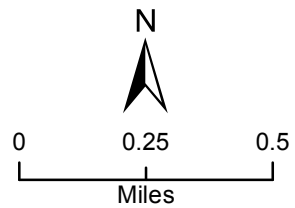


Maple Springs Fire
 NC-NCF-160295
 11/20/2016
 Day
 Map Page 2

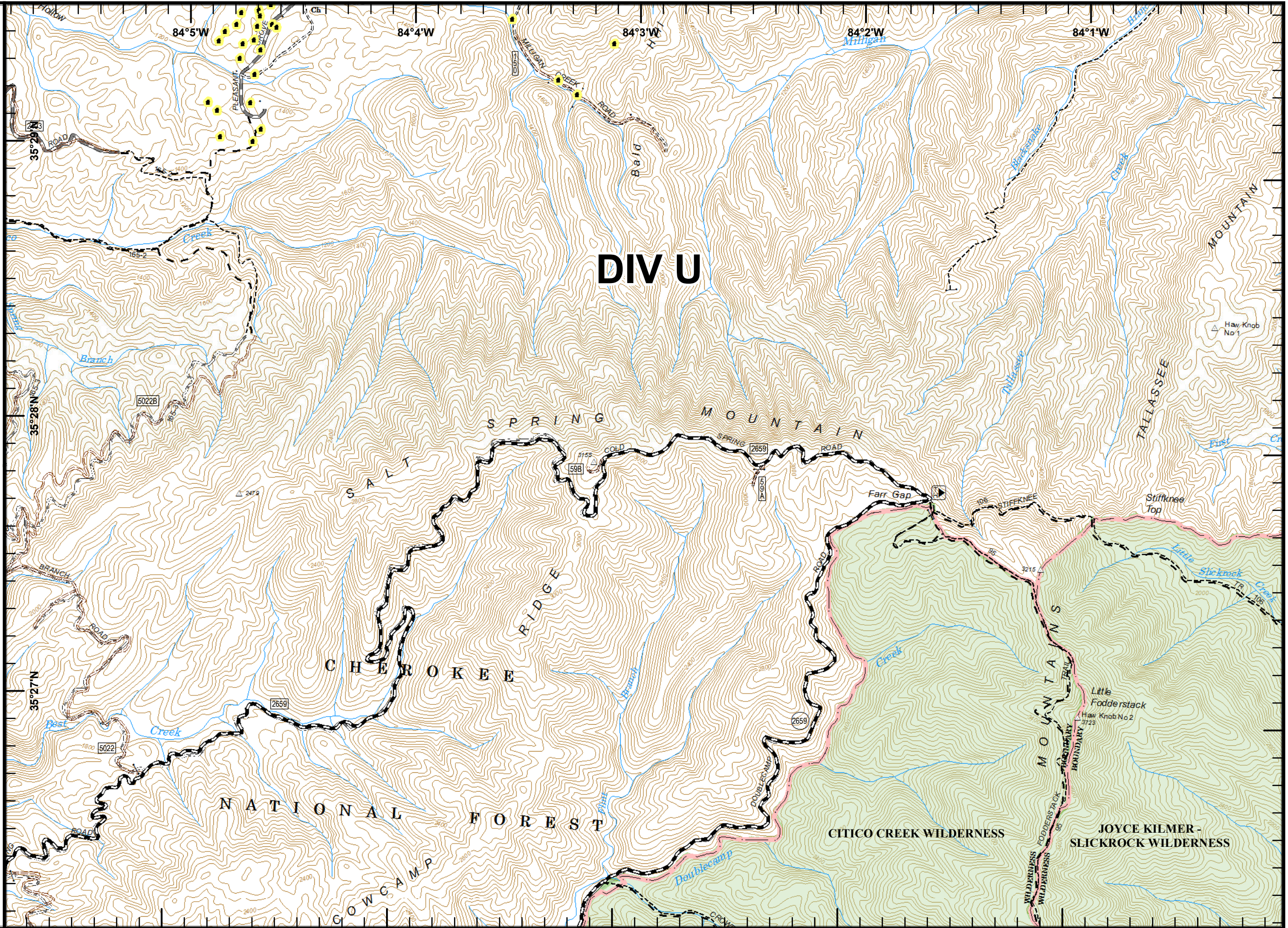
- Legend**
-  Division Break
 -  Management Action Point
 -  Structures










40 ft Contours
 NAD 83 UTM 17

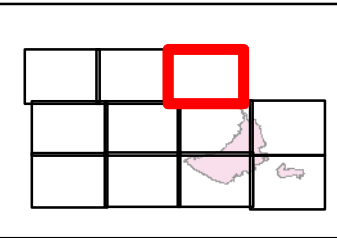


mrh
 November 19, 2016
 2100 Hours

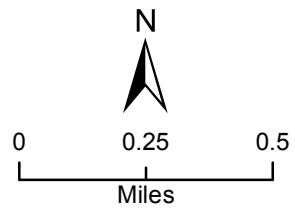


Maple Springs Fire
 NC-NCF-160295
 11/20/2016
 Day
 Map Page 3

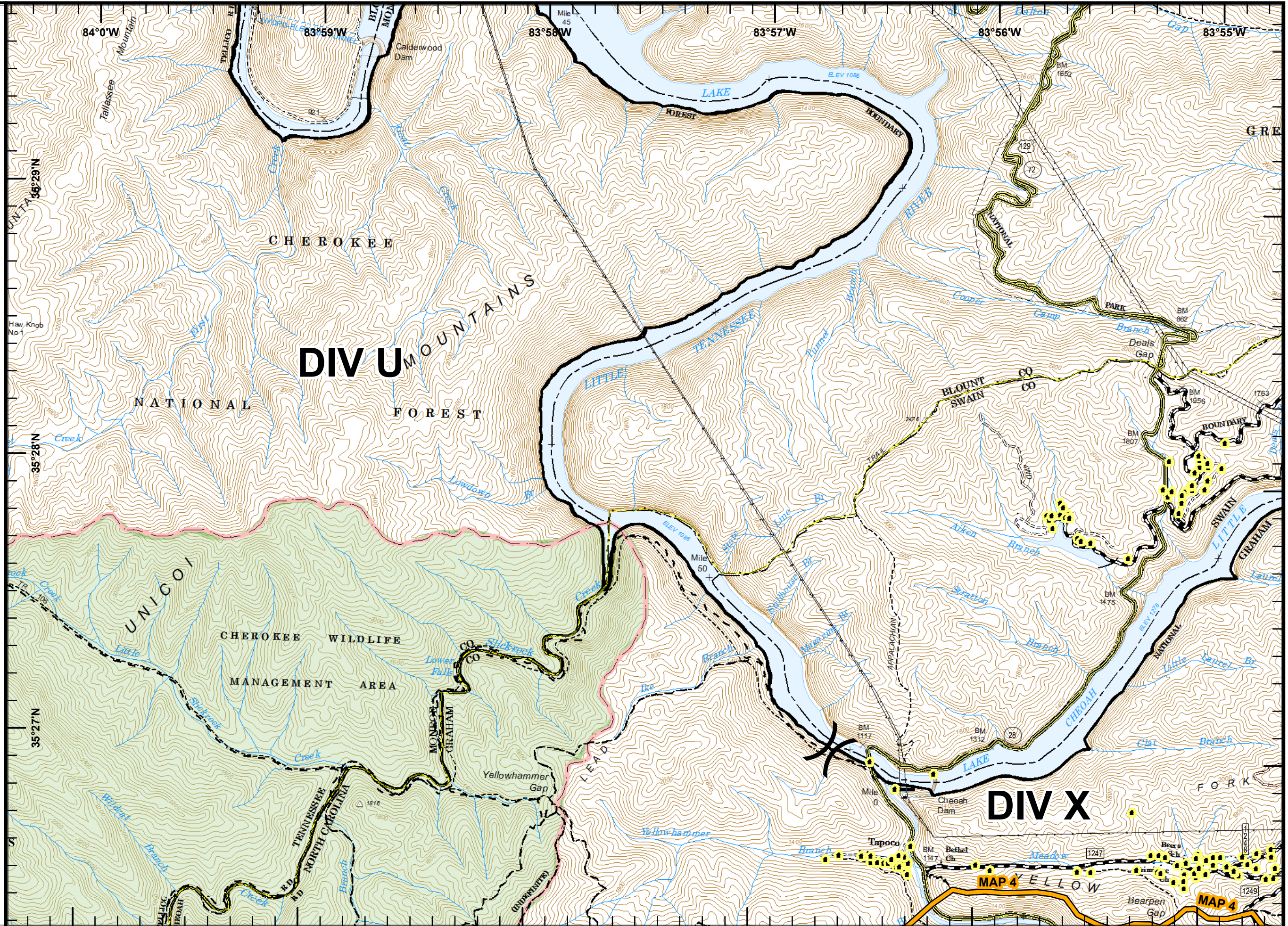
- Legend**
-  Division Break
 -  Management Action Point
 -  US Forest Service Trails
 -  Major Roads
 -  Minor Roads
 -  US Forest Service Roads
 -  Structures



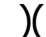



40 ft Contours
 NAD 83 UTM 17

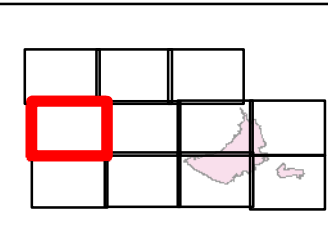


mrh
 November 19, 2016
 2100 Hours

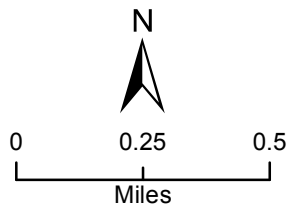


Maple Springs Fire
 NC-NCF-160295
 11/20/2016
 Day
 Map Page 4

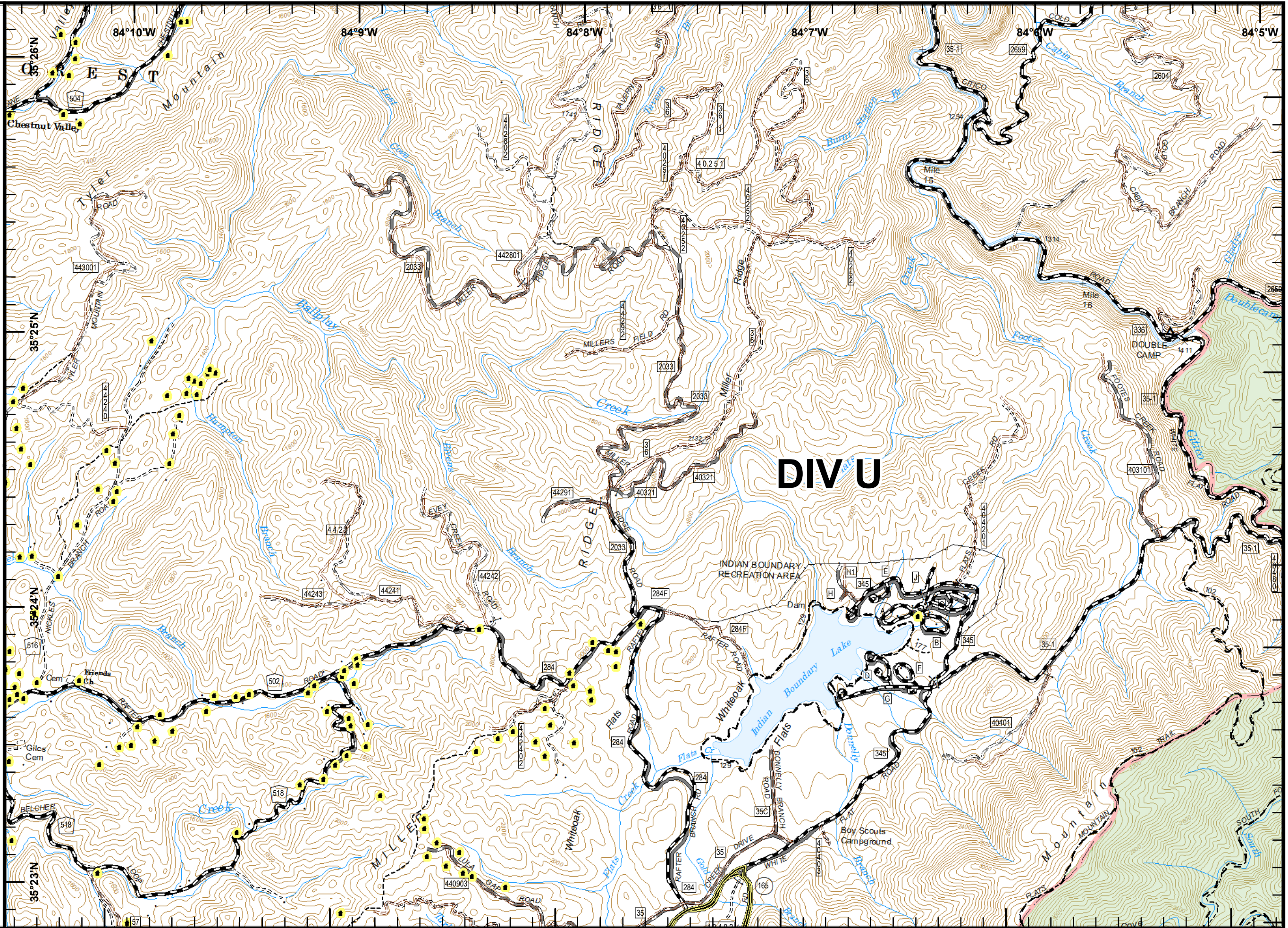
- Legend**
-  Division Break
 -  Management Action Point
 -  Major Roads
 -  Structures



40 ft Contours
 NAD 83 UTM 17



mrh
 November 19, 2016
 2100 Hours



Maple Springs Fire




NC-NCF-160295

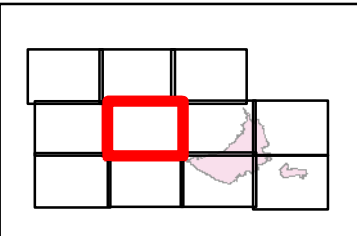
11/20/2016

Day

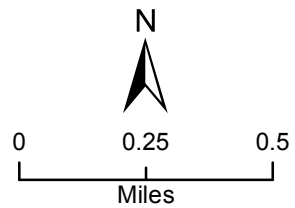
Map Page 5

Legend

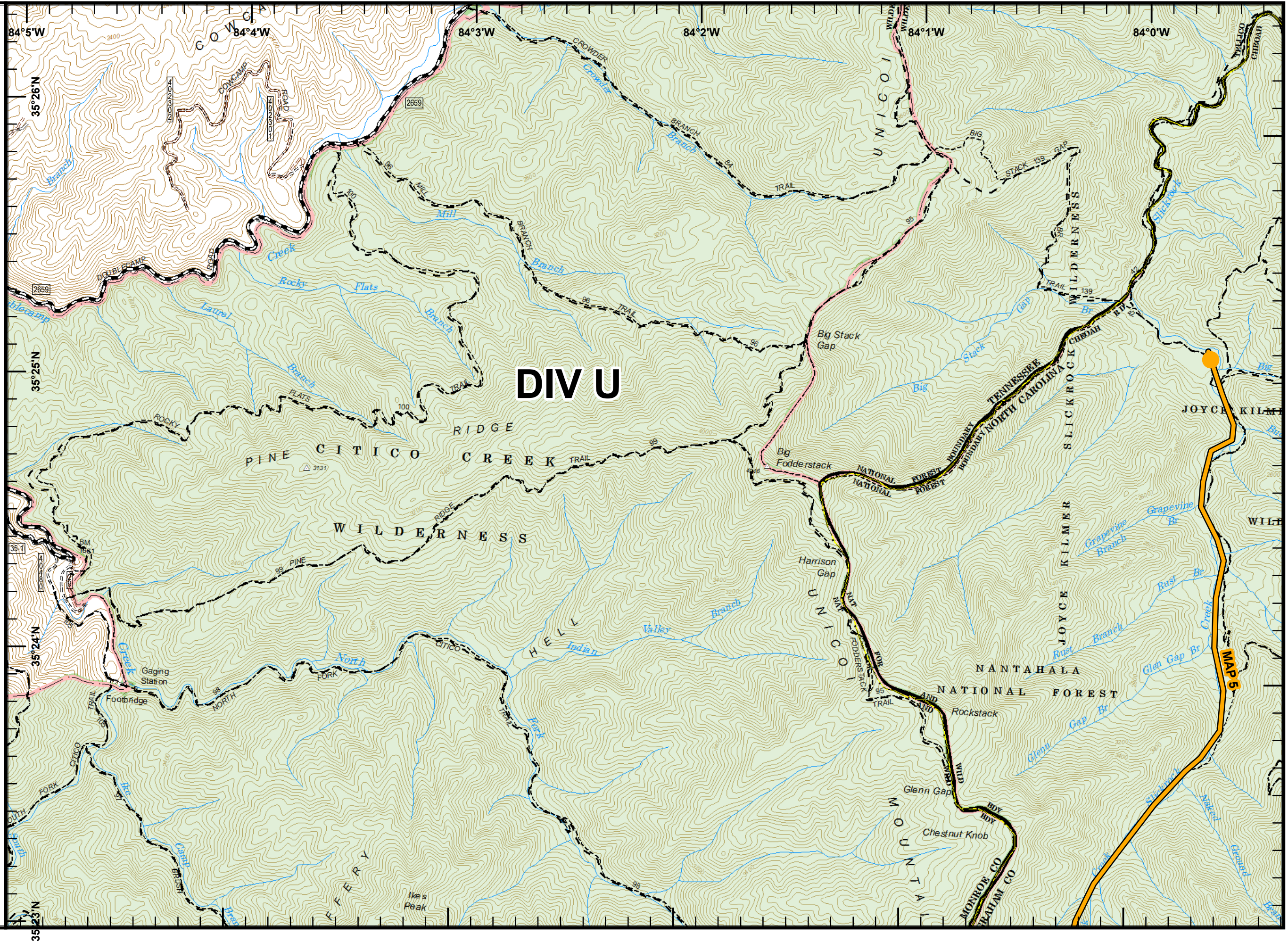
-  Division Break
-  Management Action Point
-  US Forest Service Trails



40 ft Contours
NAD 83 UTM 17



mrh
November 19, 2016
2100 Hours



Maple Springs Fire

NC-NCF-160295

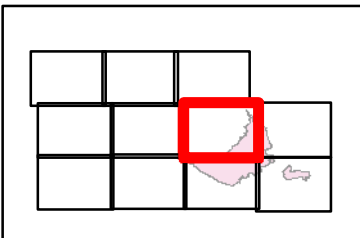
11/20/2016

Day

Map Page 6

Legend

-  Division Break
-  Drop Point
-  Helispot
-  Completed Line
-  Uncontrolled Fire Edge
-  Management Action Point
-  US Forest Service Trails
-  Minor Roads
-  US Forest Service Roads
-  Structures



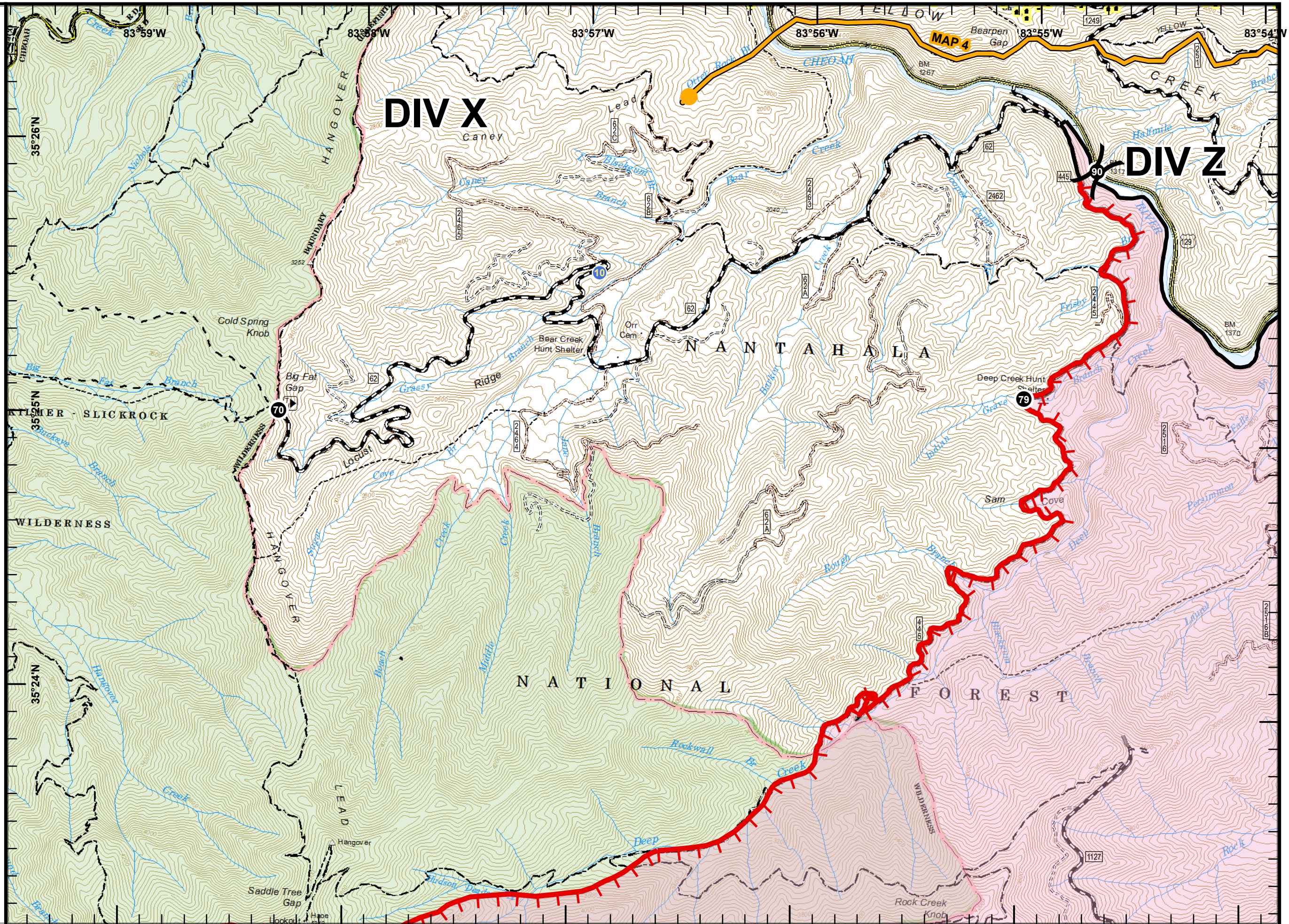
40 ft Contours
NAD 83 UTM 17



0 0.25 0.5
Miles

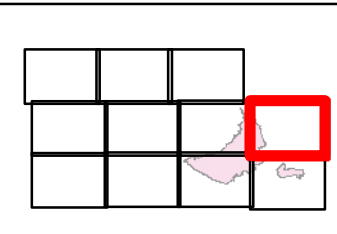


mrh
November 19, 2016
2100 Hours

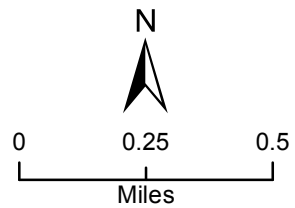


Maple Springs Fire
 NC-NCF-160295
 11/20/2016
 Day
 Map Page 7

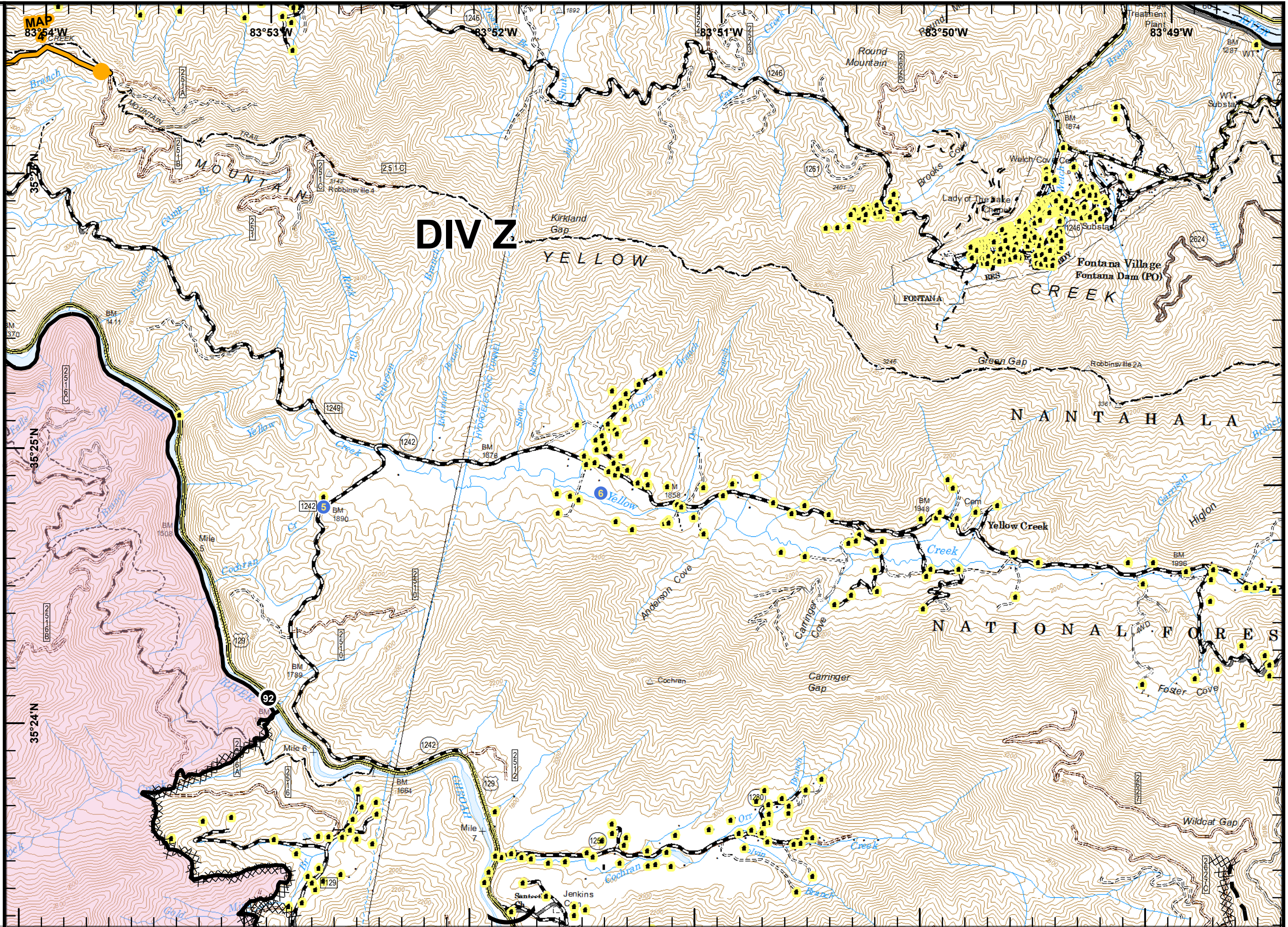
- Legend**
- () Division Break
 - Drop Point
 - Helispot
 - Completed Line
 - ⊕ Dozer Line
 - Planned Fire Line
 - Management Action Point
 - US Forest Service Trails
 - Minor Roads
 - US Forest Service Roads
 - Structures



40 ft Contours
 NAD 83 UTM 17



mrh
 November 19, 2016
 2100 Hours



Maple Springs Fire






NC-NCF-160295

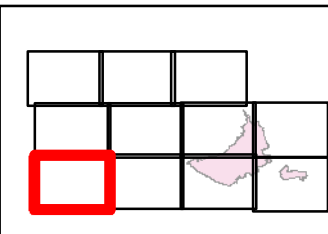
11/20/2016

Day

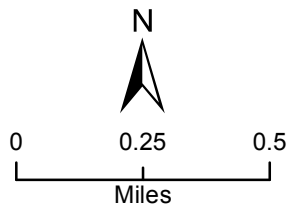
Map Page 8

Legend

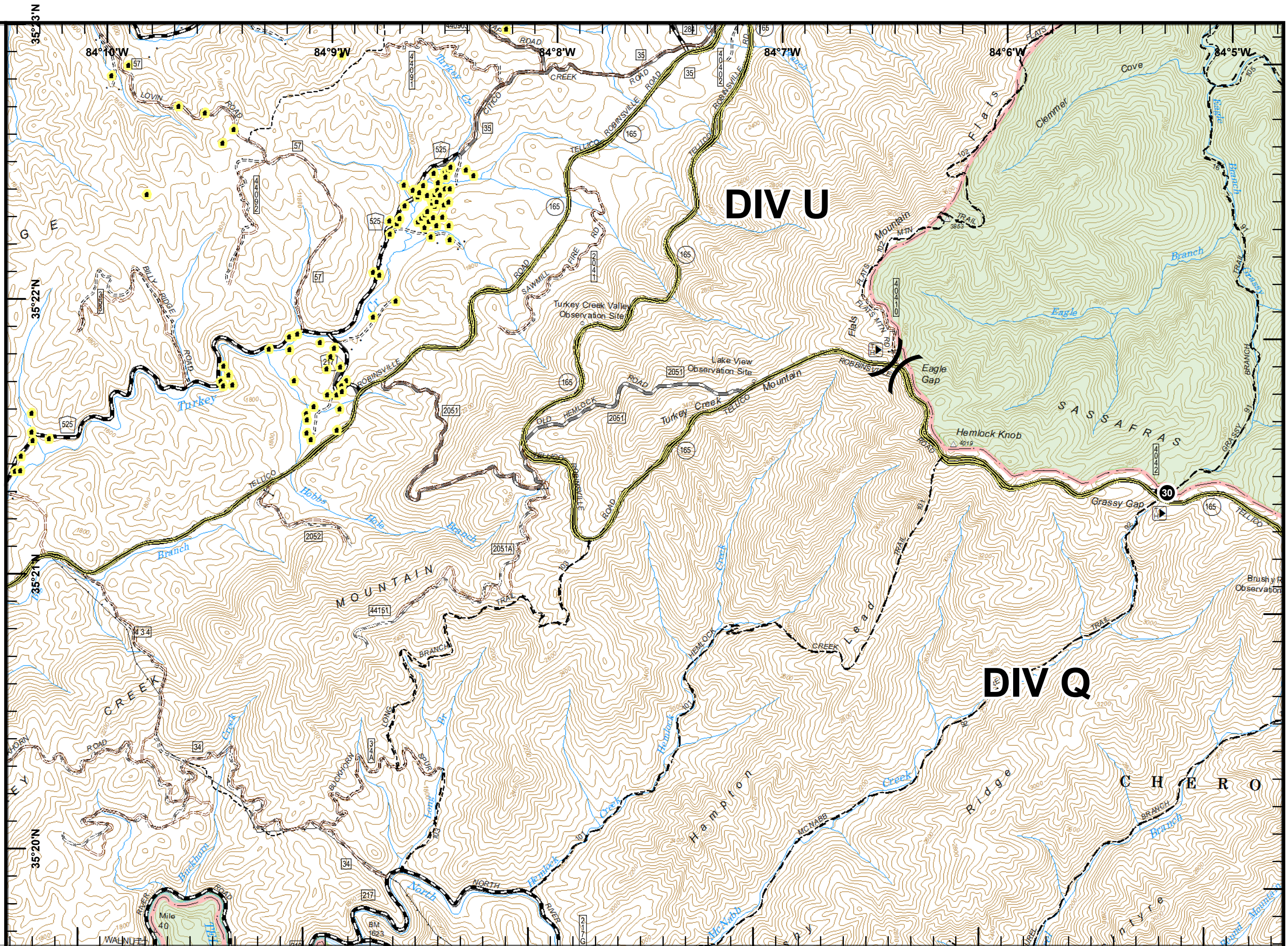
-  Division Break
-  Drop Point
-  Management Action Point
-  Major Roads
-  Structures



40 ft Contours
NAD 83 UTM 17

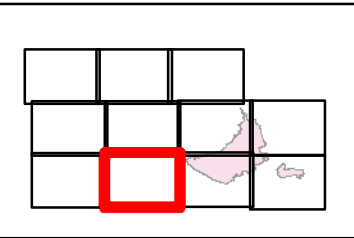


mrh
November 19, 2016
2100 Hours

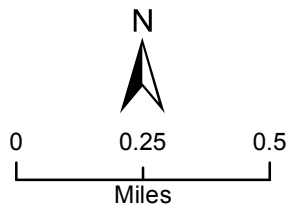


Maple Springs Fire
 NC-NCF-160295
 11/20/2016
 Day
 Map Page 9

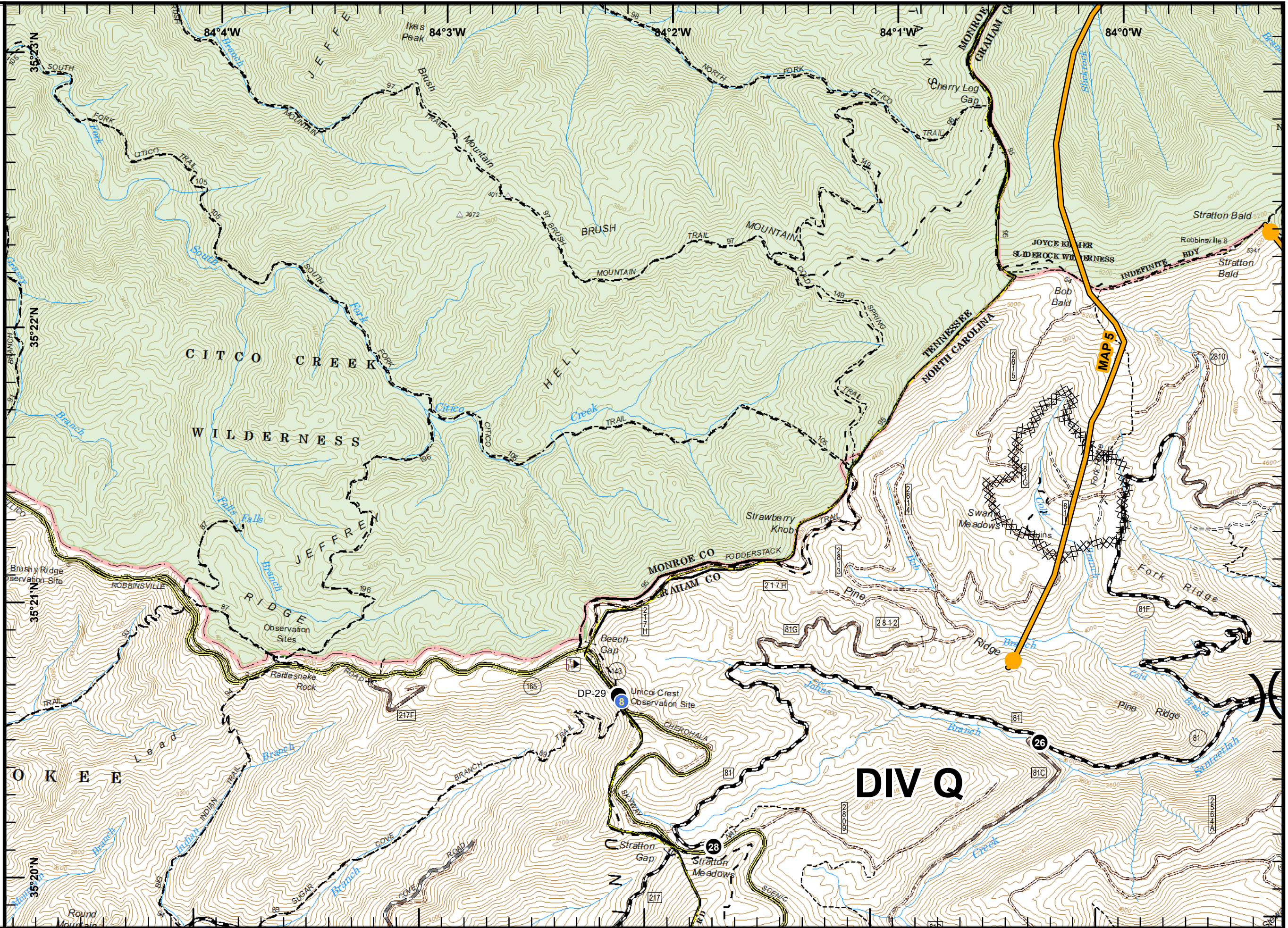
- Legend**
- (X) Division Break
 - Drop Point
 - Helispot
 - ⊥ Dozer Line
 - Management Action Point
 - - - US Forest Service Trails
 - == Major Roads
 - ~ Minor Roads
 - US Forest Service Roads



40 ft Contours
 NAD 83 UTM 17



mh
 November 19, 2016
 2100 Hours



Maple Springs Fire

NC-NCF-160295

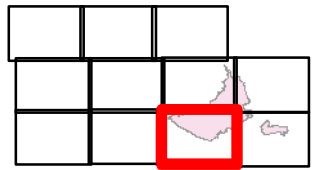
11/20/2016

Day

Map Page 10

Legend

- (X) Division Break
- Drop Point
- (W) Water Source
- ~ Completed Line
- # Dozer Line
- 🔴 Uncontrolled Fire Edge
- Management Action Point
- - - US Forest Service Trails
- ~ Minor Roads
- US Forest Service Roads
- Structures



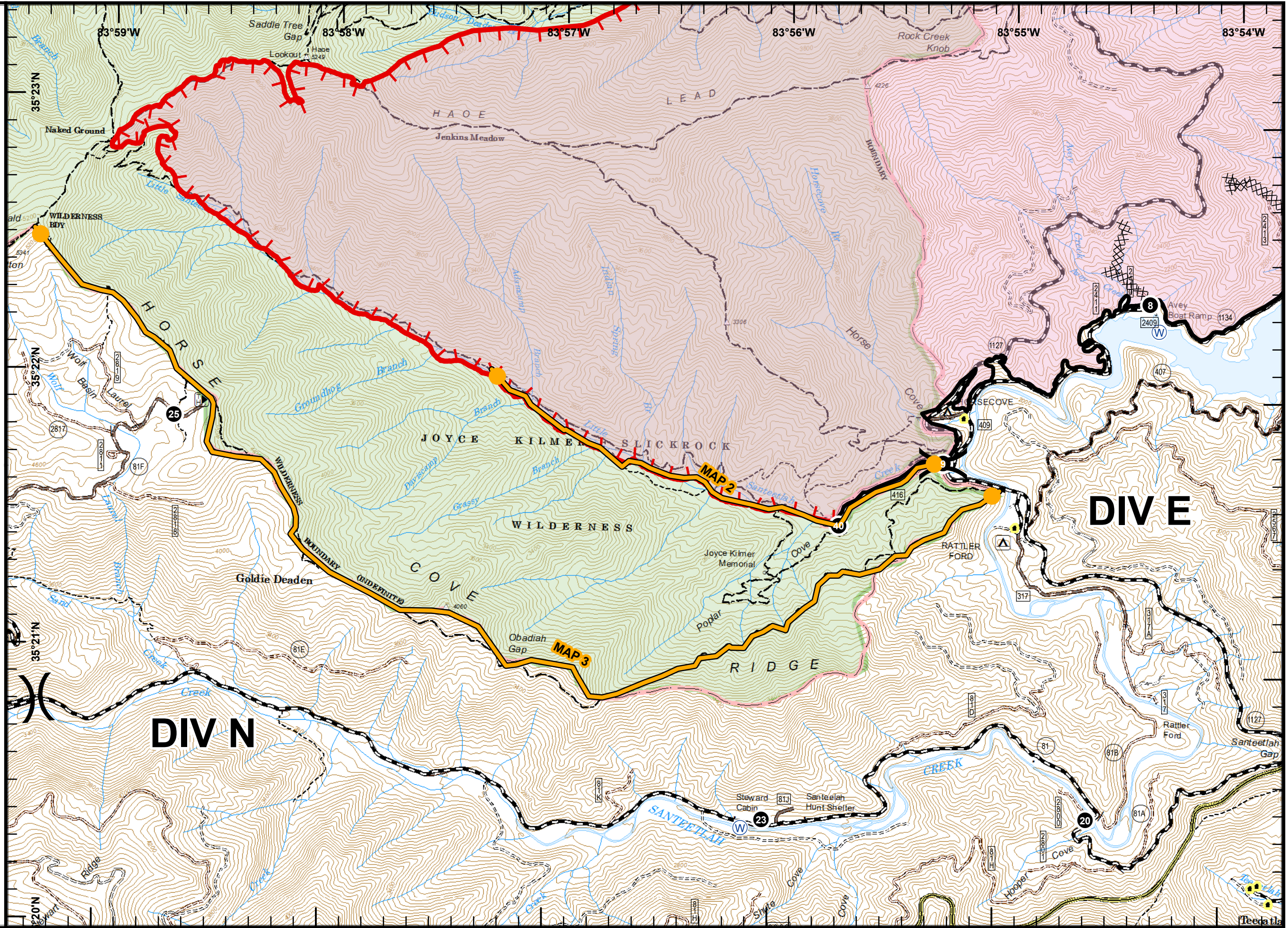
40 ft Contours
NAD 83 UTM 17



0 0.25 0.5
Miles

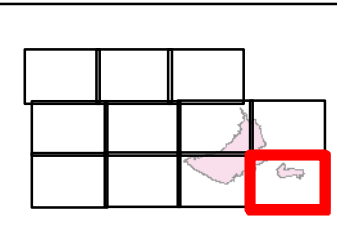


mrh
November 19, 2016
2100 Hours

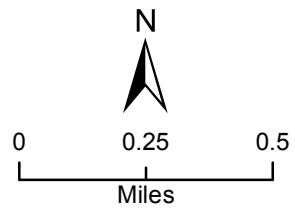


Maple Springs Fire
 NC-NCF-160295
 11/20/2016
 Day
 Map Page 11

- Legend**
- (X) Division Break
 - Drop Point
 - Helispot
 - (W) Water Source
 - Completed Line
 - ⊞ Dozer Line
 - Planned Fire Line
 - Management Action Point
 - - - US Forest Service Trails
 - Minor Roads
 - US Forest Service Roads
 - Structures



40 ft Contours
 NAD 83 UTM 17



mrh
 November 19, 2016
 2100 Hours

