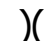



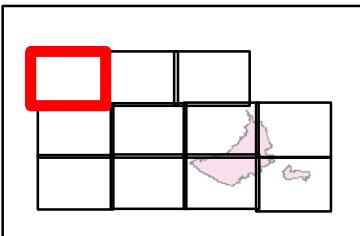


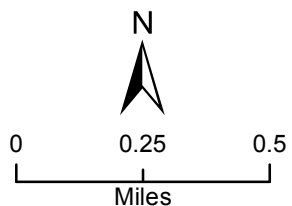
Maple Springs Branch
NC-NCF-160295
11/23/2016
Day
Map Page 1

Legend

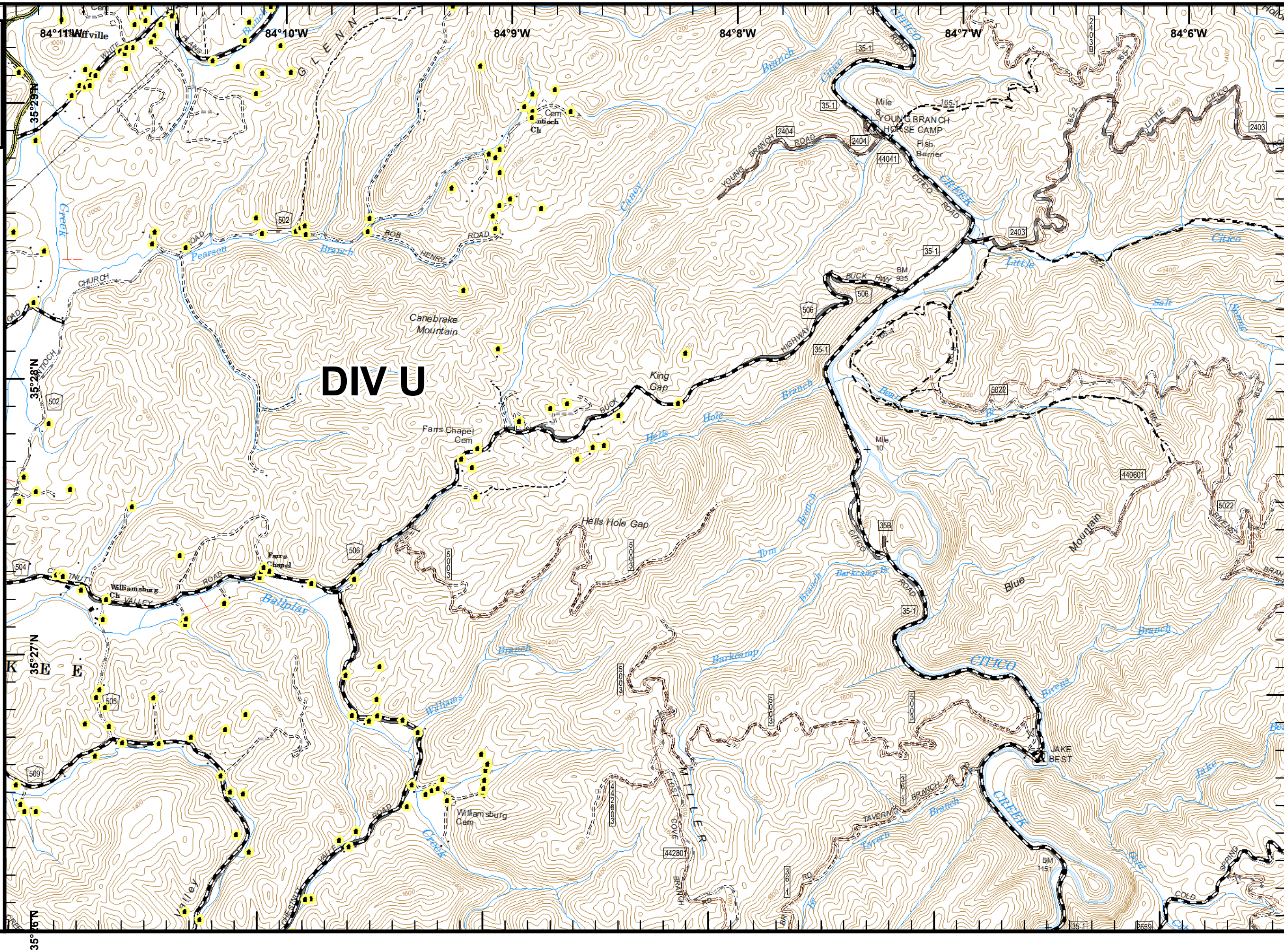
-  Division Break
-  Management Action Point
-  Major Roads
-  Structures



40 ft Contours
NAD 83 UTM 17



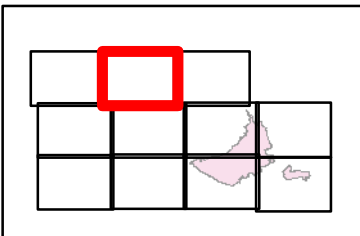
RLM
November 22, 2016
1700 Hours



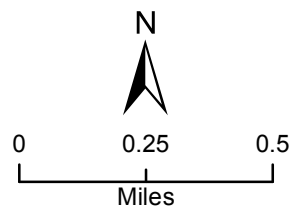
Maple Springs Branch
NC-NCF-160295
11/23/2016
Day
Map Page 2

Legend

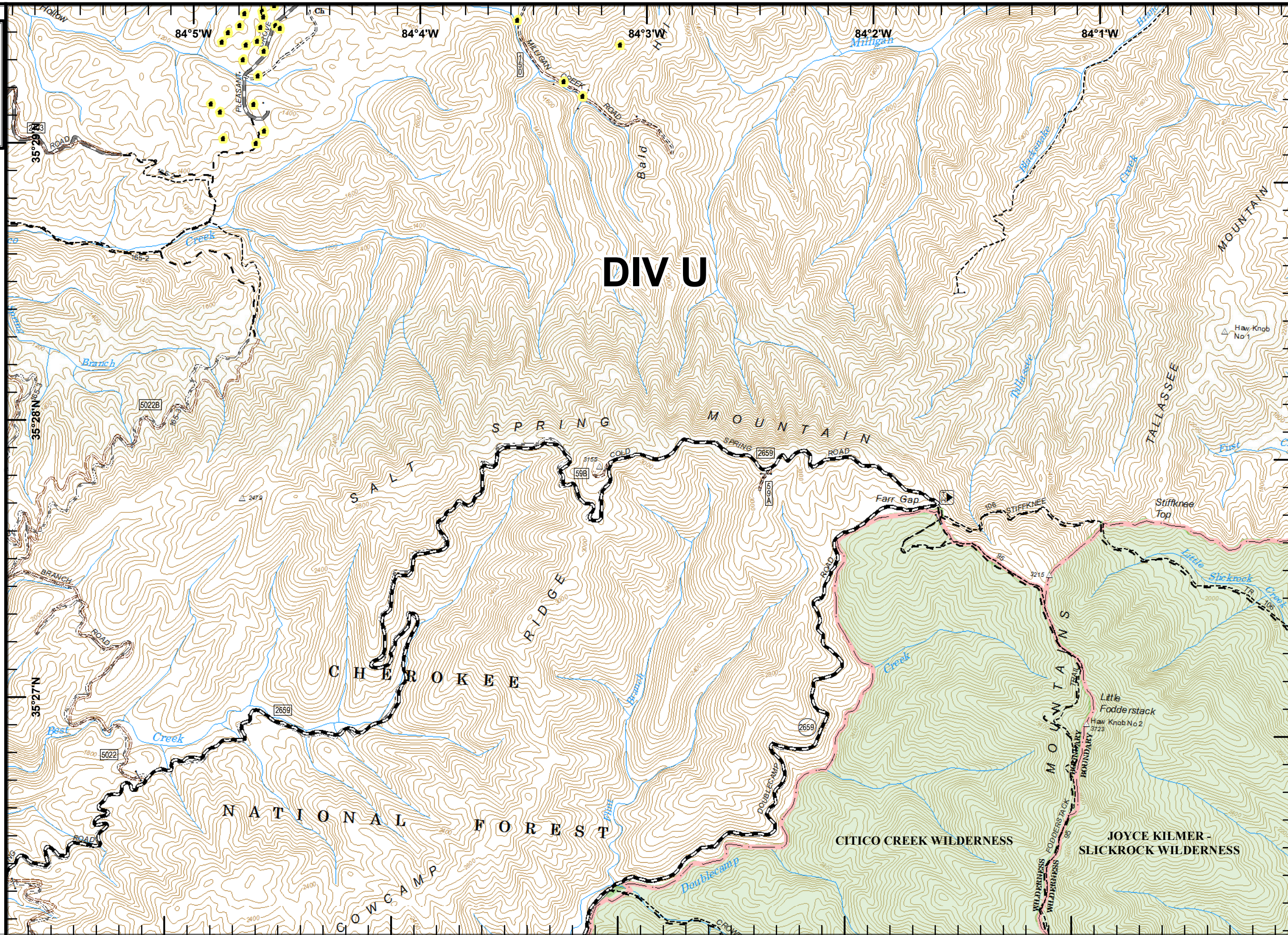
- (X) Division Break
- Management Action Point
- Structures



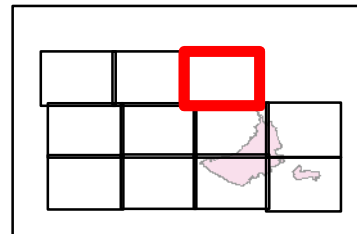
40 ft Contours
NAD 83 UTM 17



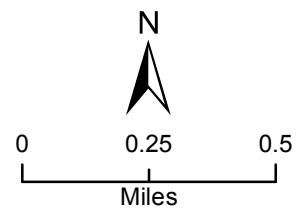
RLM
November 22, 2016
1700 Hours



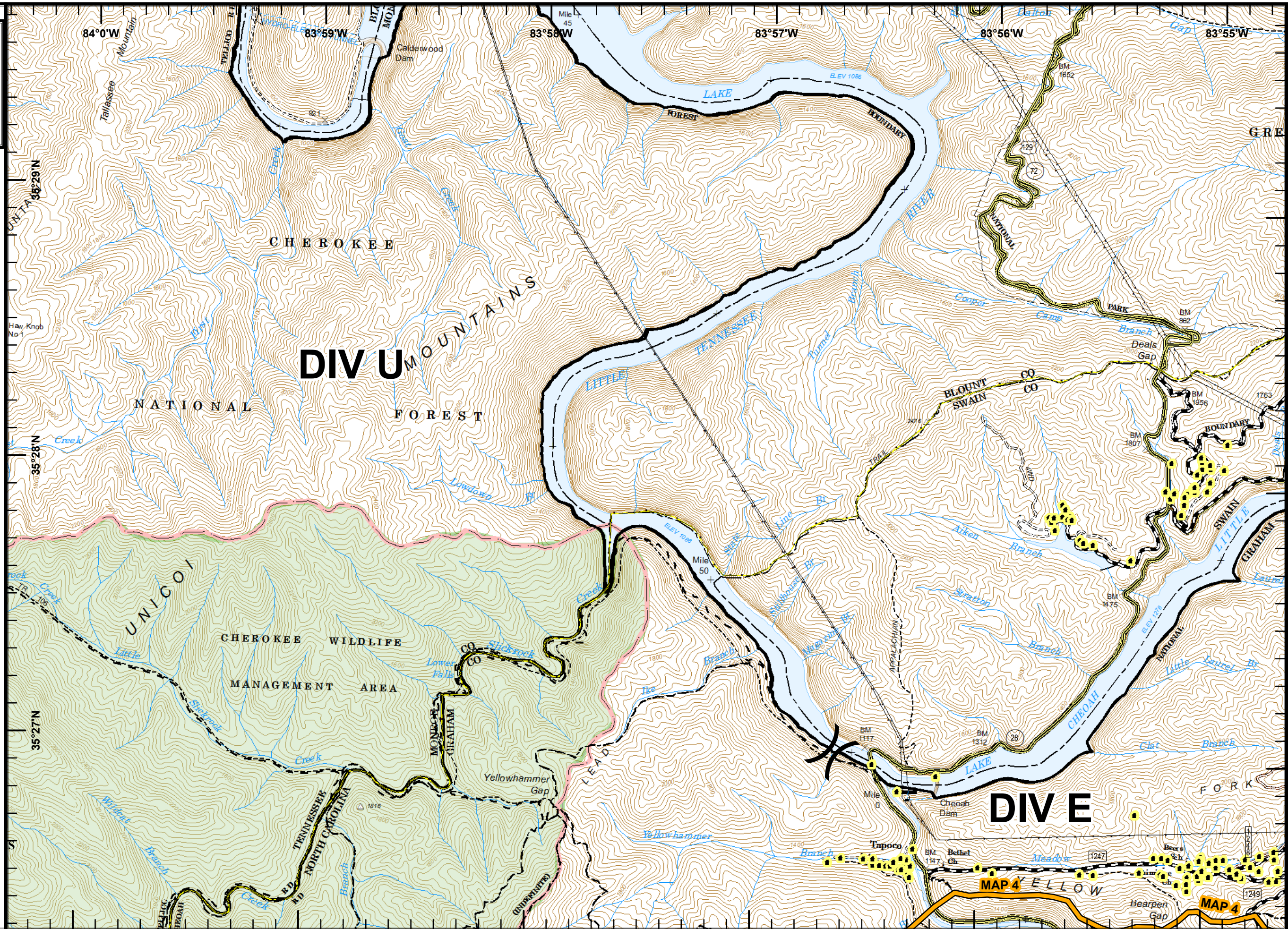
- Legend
-  Division Break
 -  Management Action Point
 -  US Forest Service Trails
 -  Major Roads
 -  Minor Roads
 -  US Forest Service Roads
 -  Structures

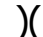





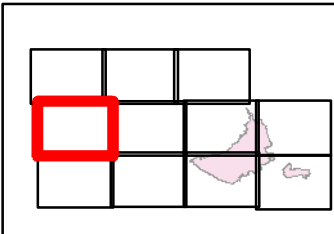
40 ft Contours
 NAD 83 UTM 17



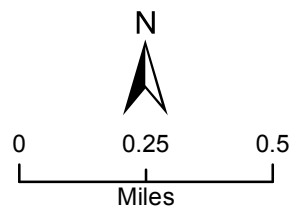
RLM
 November 22, 2016
 1700 Hours



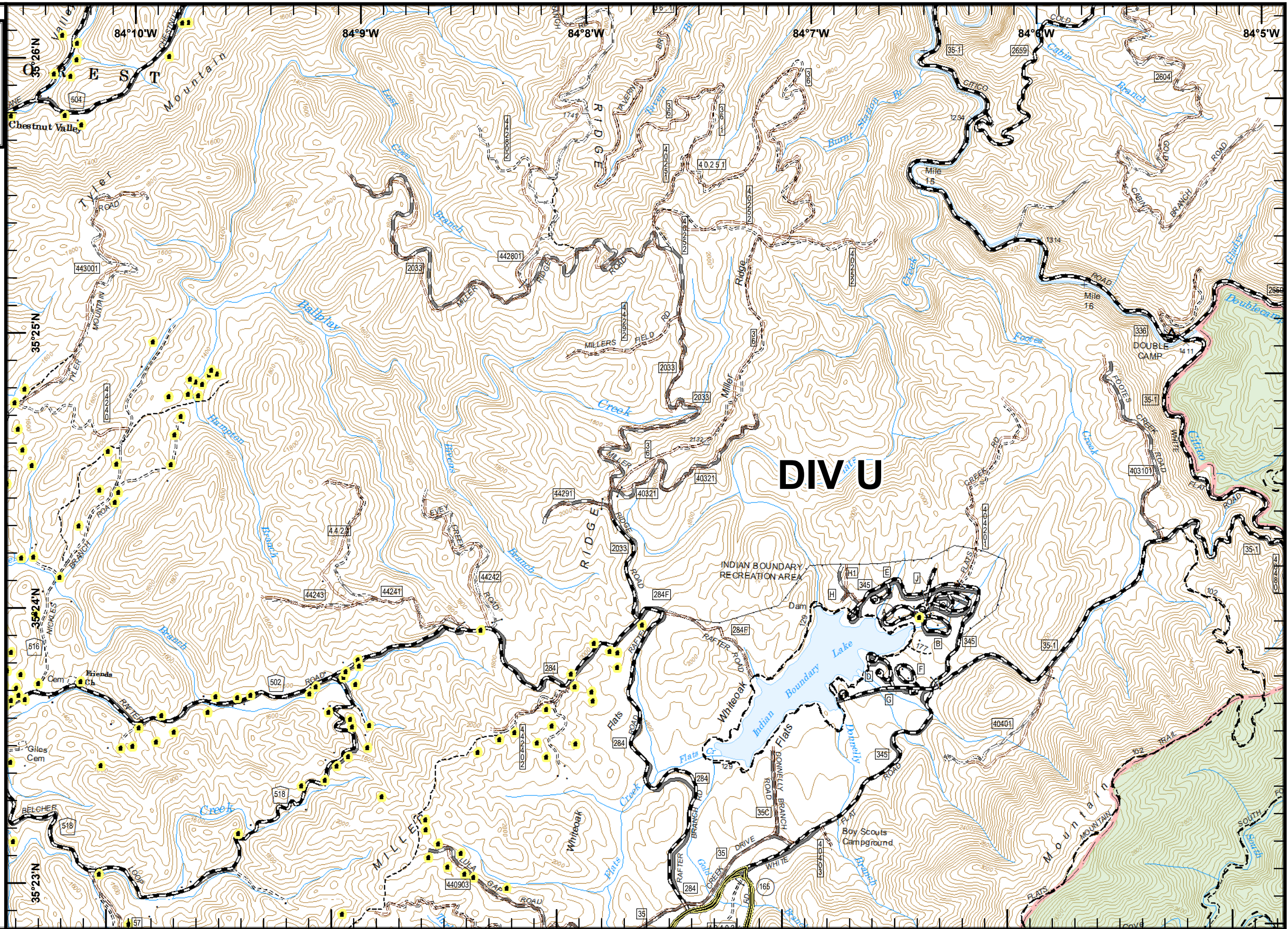
- Legend**
-  Division Break
 -  Management Action Point
 -  Major Roads
 -  Structures






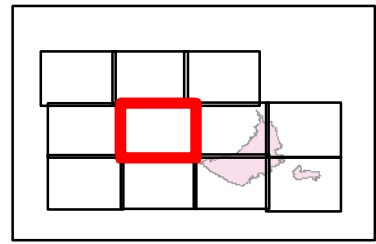
40 ft Contours
 NAD 83 UTM 17



RLM
 November 22, 2016
 1700 Hours

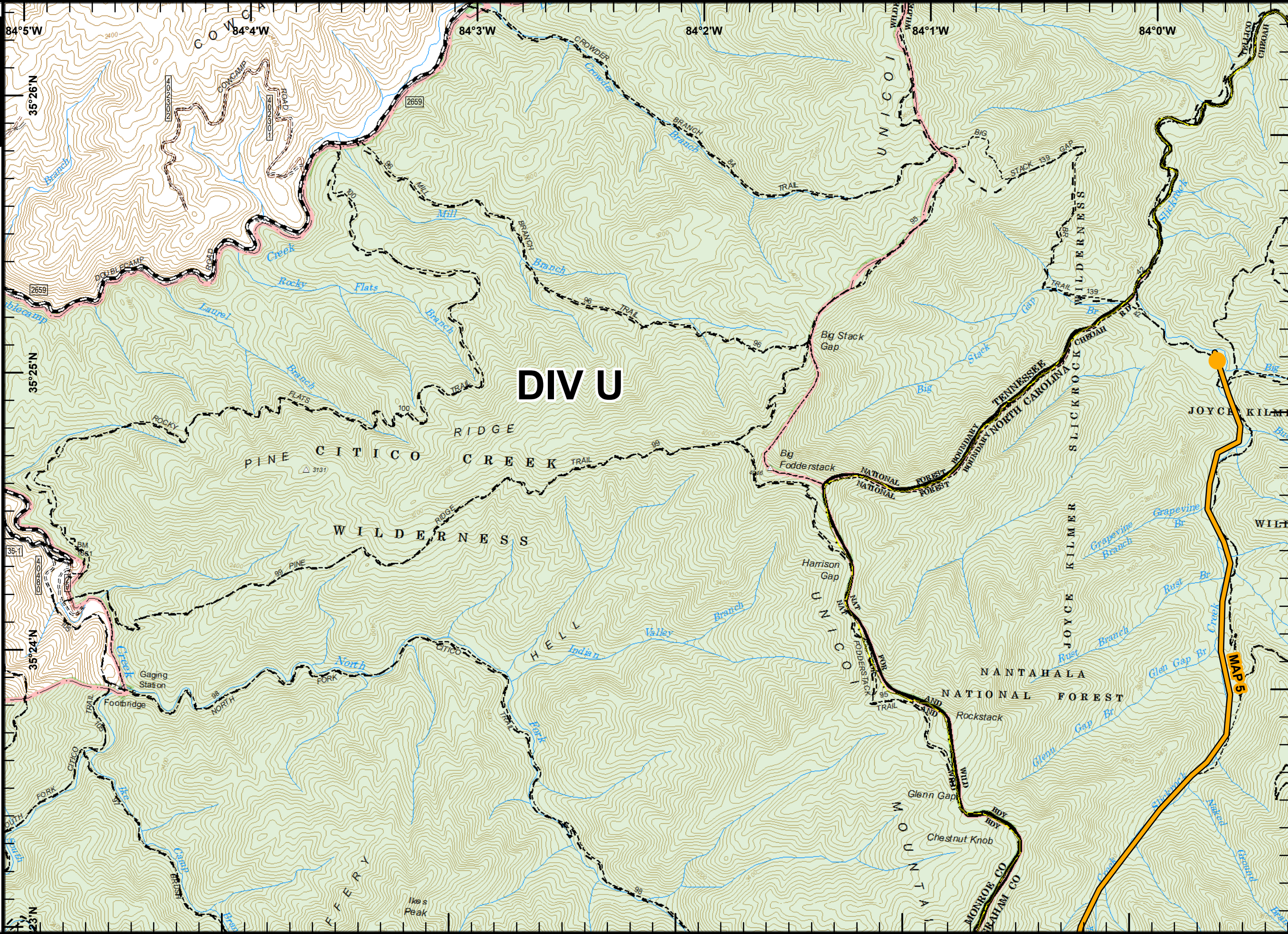


- Legend
-  Division Break
 -  Management Action Point
 -  US Forest Service Trails



40 ft Contours
 NAD 83 UTM 17

0 0.25 0.5
 Miles

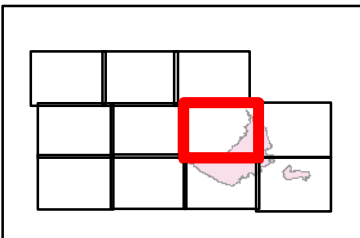


MAP 5

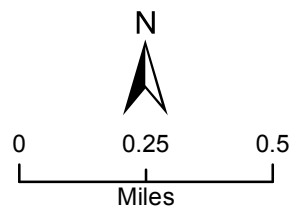
RLM
 November 22, 2016
 1700 Hours

Maple Springs Branch
 NC-NCF-160295
 11/23/2016
 Day
 Map Page 6

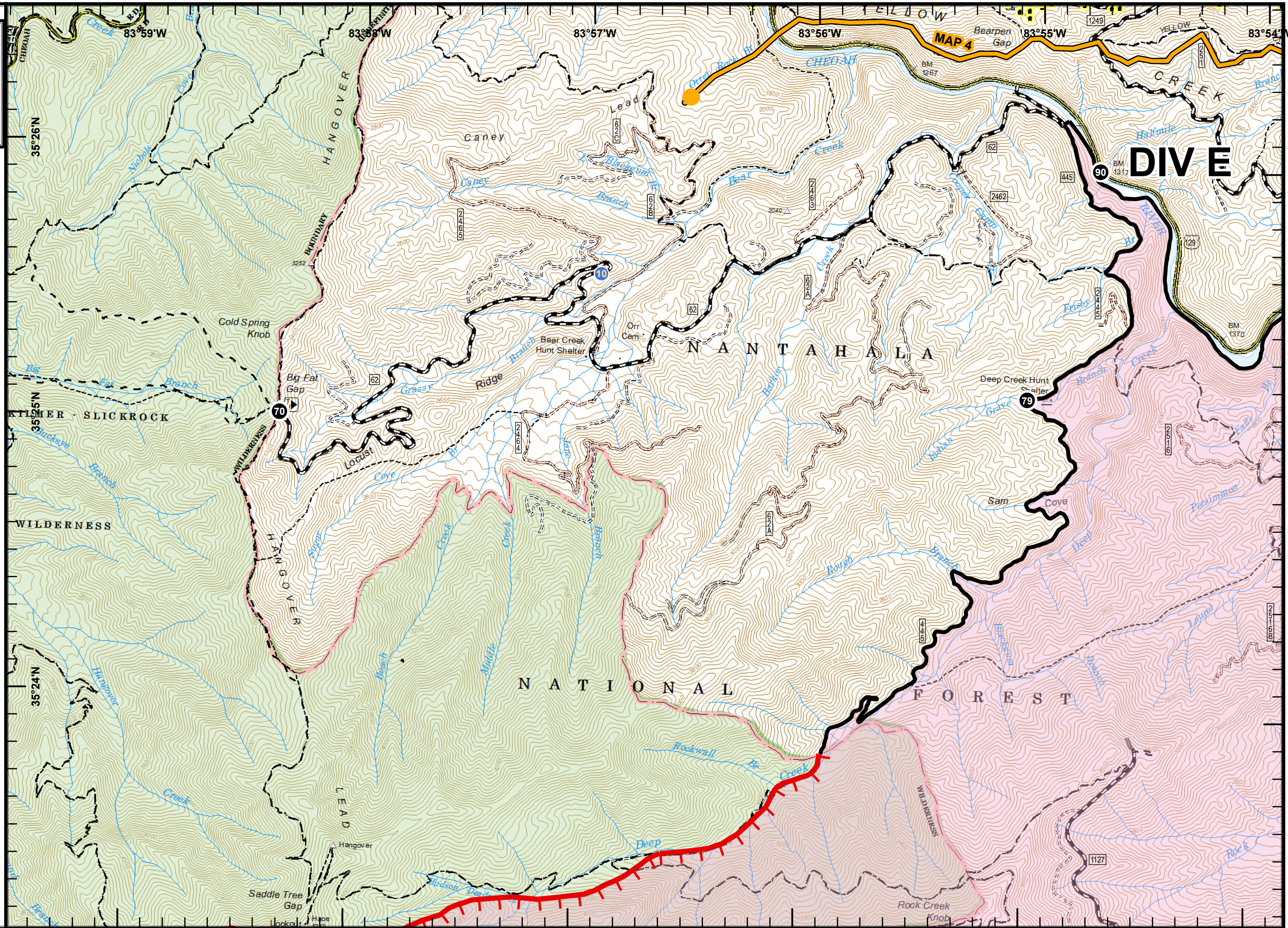
- Legend**
-  Division Break
 -  Drop Point
 -  Helispot
 -  Completed Line
 -  Uncontrolled Fire Edge
 -  Management Action Point
 -  US Forest Service Trails
 -  Minor Roads
 -  US Forest Service Roads
 -  Structures



40 ft Contours
 NAD 83 UTM 17

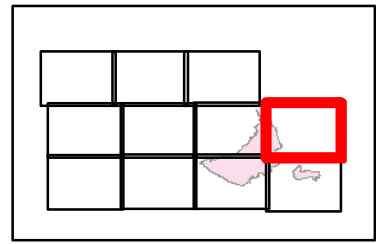


RLM
 November 22, 2016
 1700 Hours

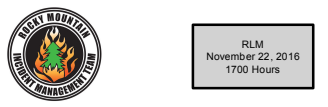
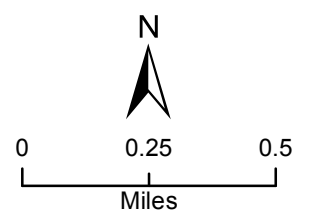


Maple Springs Branch
 NC-NCF-160295
 11/23/2016
 Day
 Map Page 7

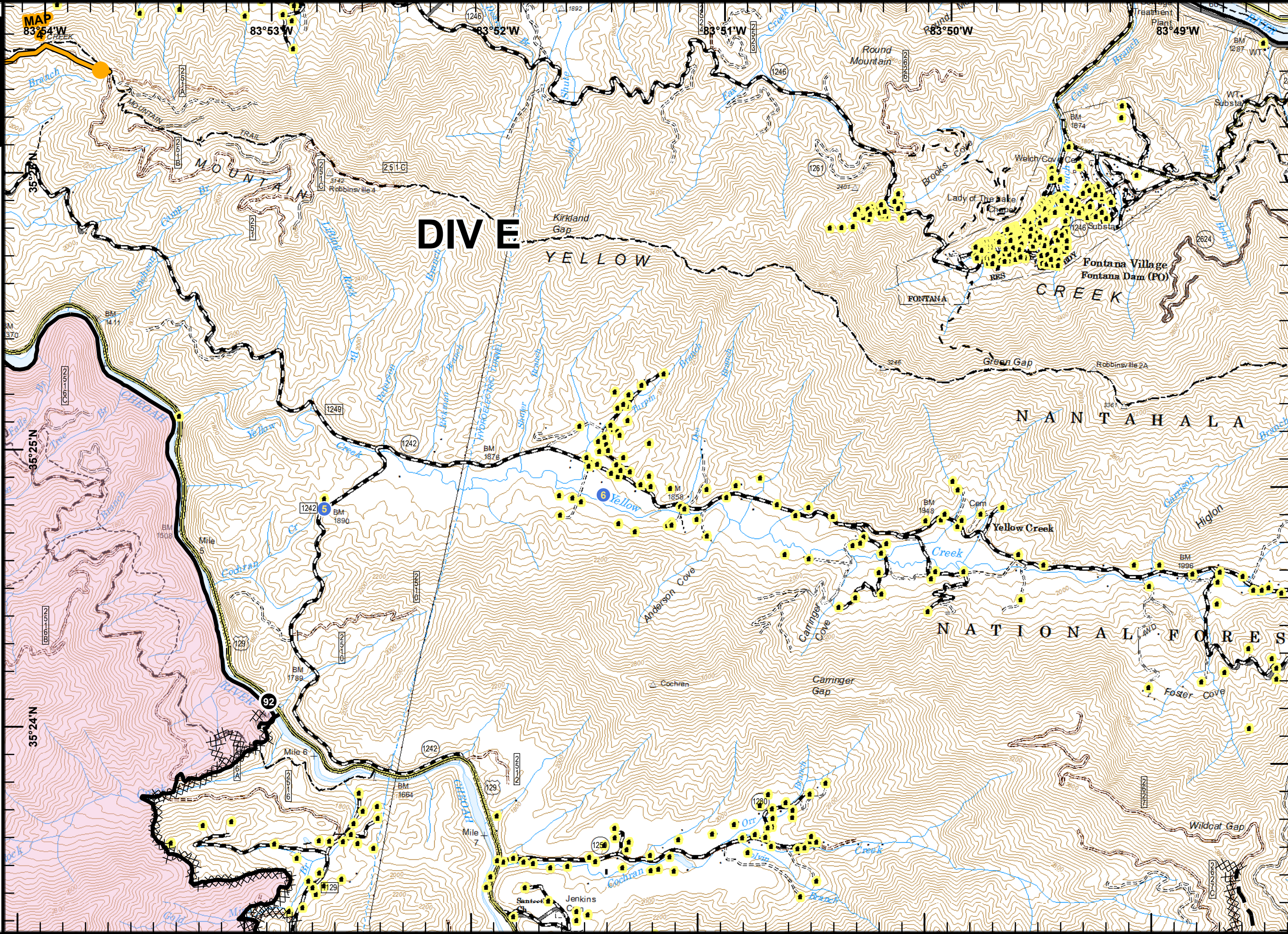
- Legend**
- (X) Division Break
 - Drop Point
 - Helispot
 - Completed Line
 - ⊥ Dozer Line
 - Planned Fire Line
 - Management Action Point
 - US Forest Service Trails
 - Minor Roads
 - US Forest Service Roads
 - Structures








40 ft Contours
 NAD 83 UTM 17

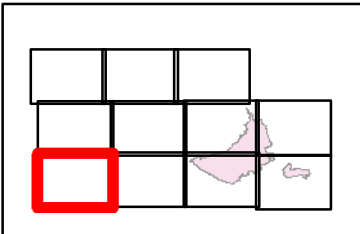


RLM
 November 22, 2016
 1700 Hours

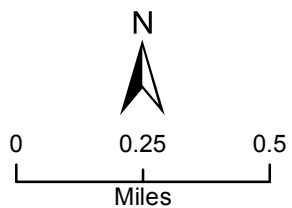


Maple Springs Branch
 NC-NCF-160295
 11/23/2016
 Day
 Map Page 8

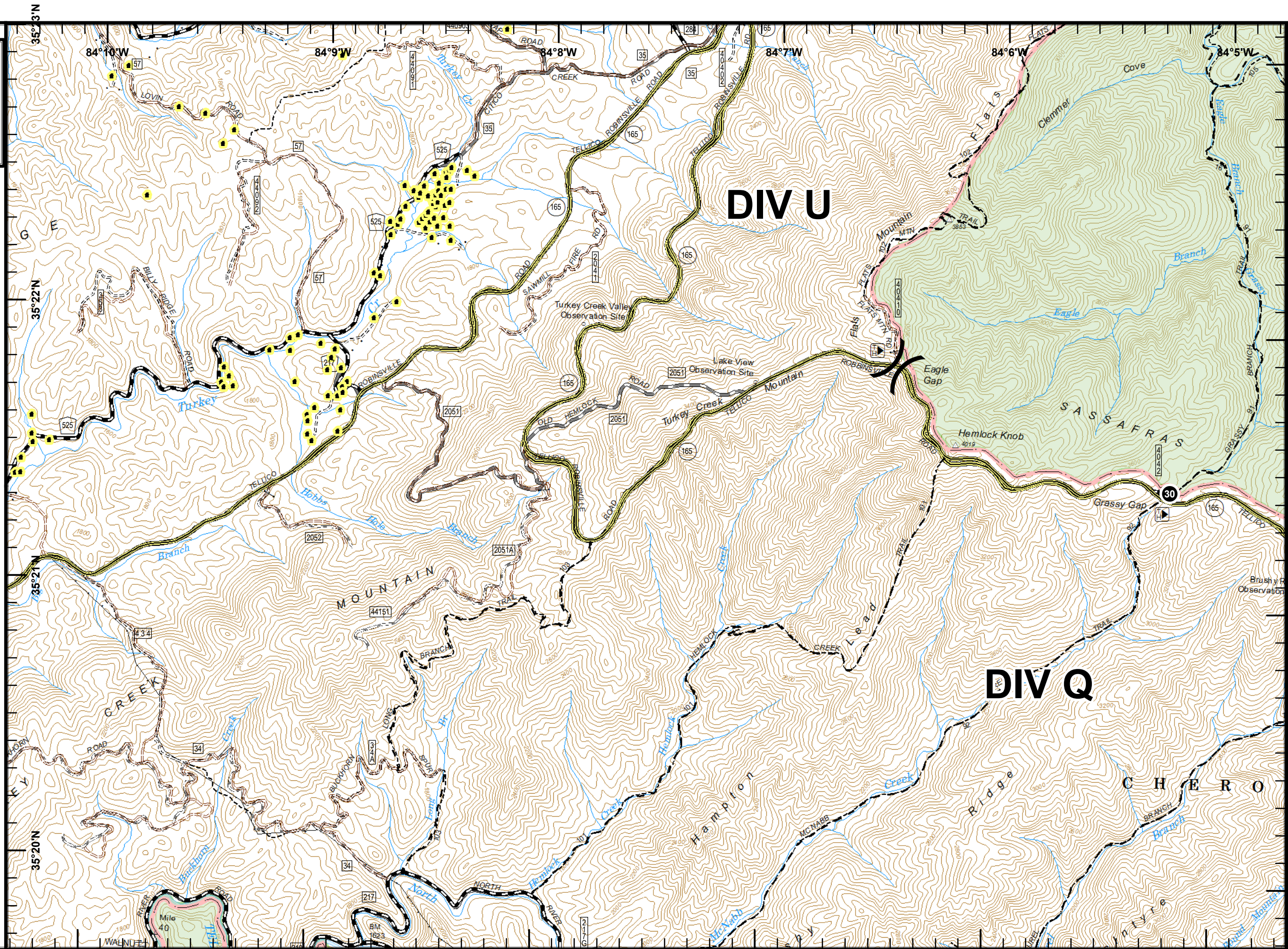
- Legend**
-  Division Break
 -  Drop Point
 -  Management Action Point
 -  Major Roads
 -  Structures



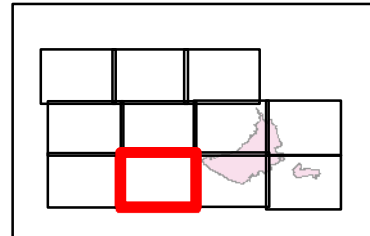
40 ft Contours
 NAD 83 UTM 17



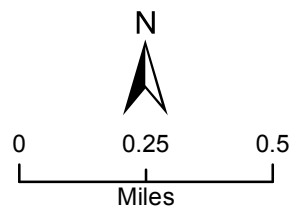
RLM
 November 22, 2016
 1700 Hours



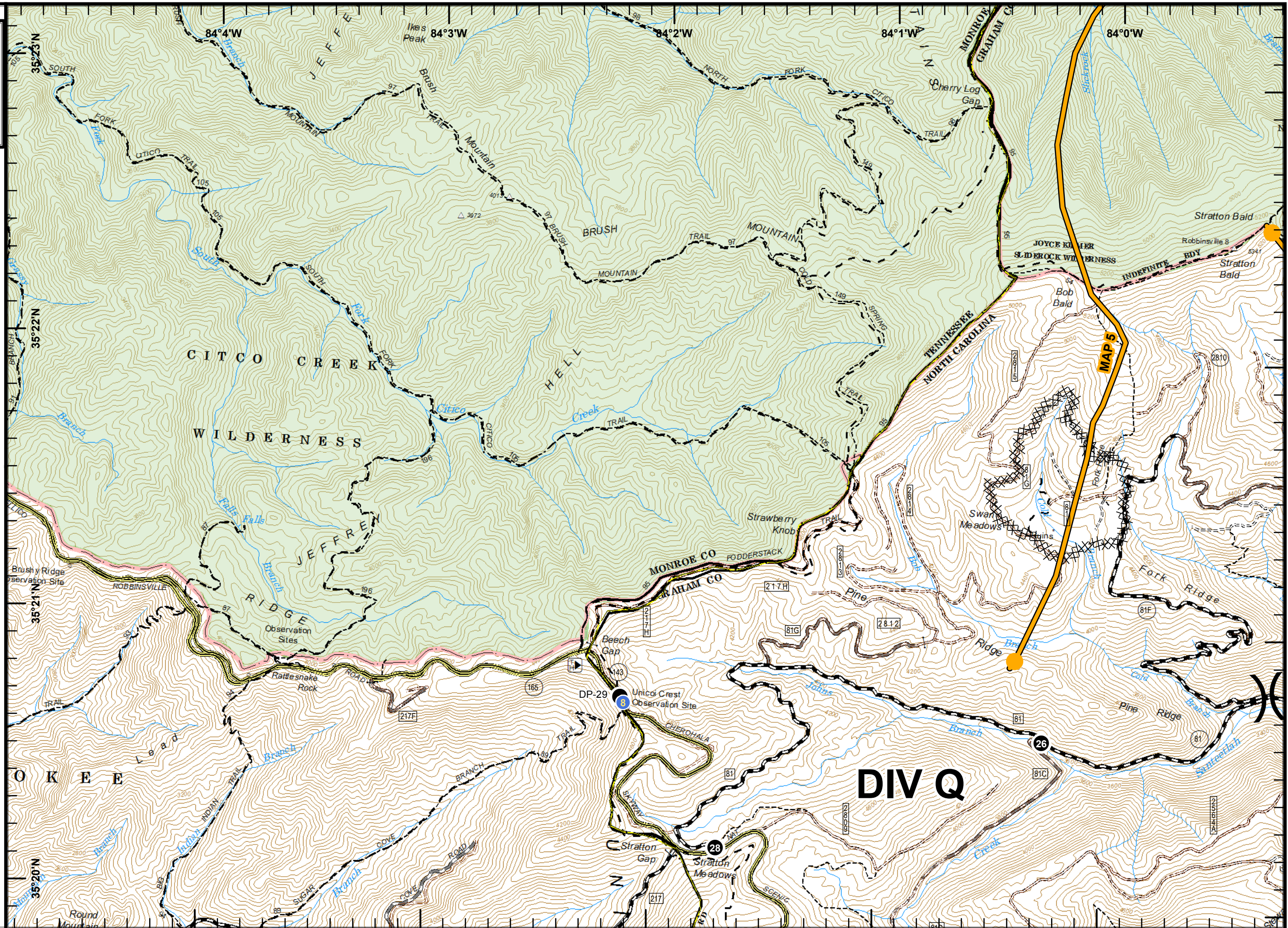
- Legend**
-  Division Break
 -  Drop Point
 -  Helispot
 -  Dozer Line
 -  Management Action Point
 -  US Forest Service Trails
 -  Major Roads
 -  Minor Roads
 -  US Forest Service Roads



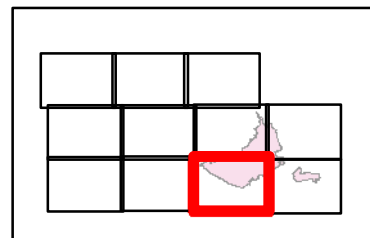
40 ft Contours
 NAD 83 UTM 17



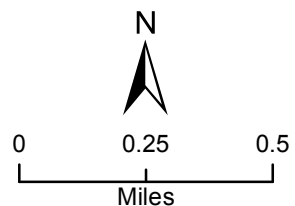
RLM
 November 22, 2016
 1700 Hours



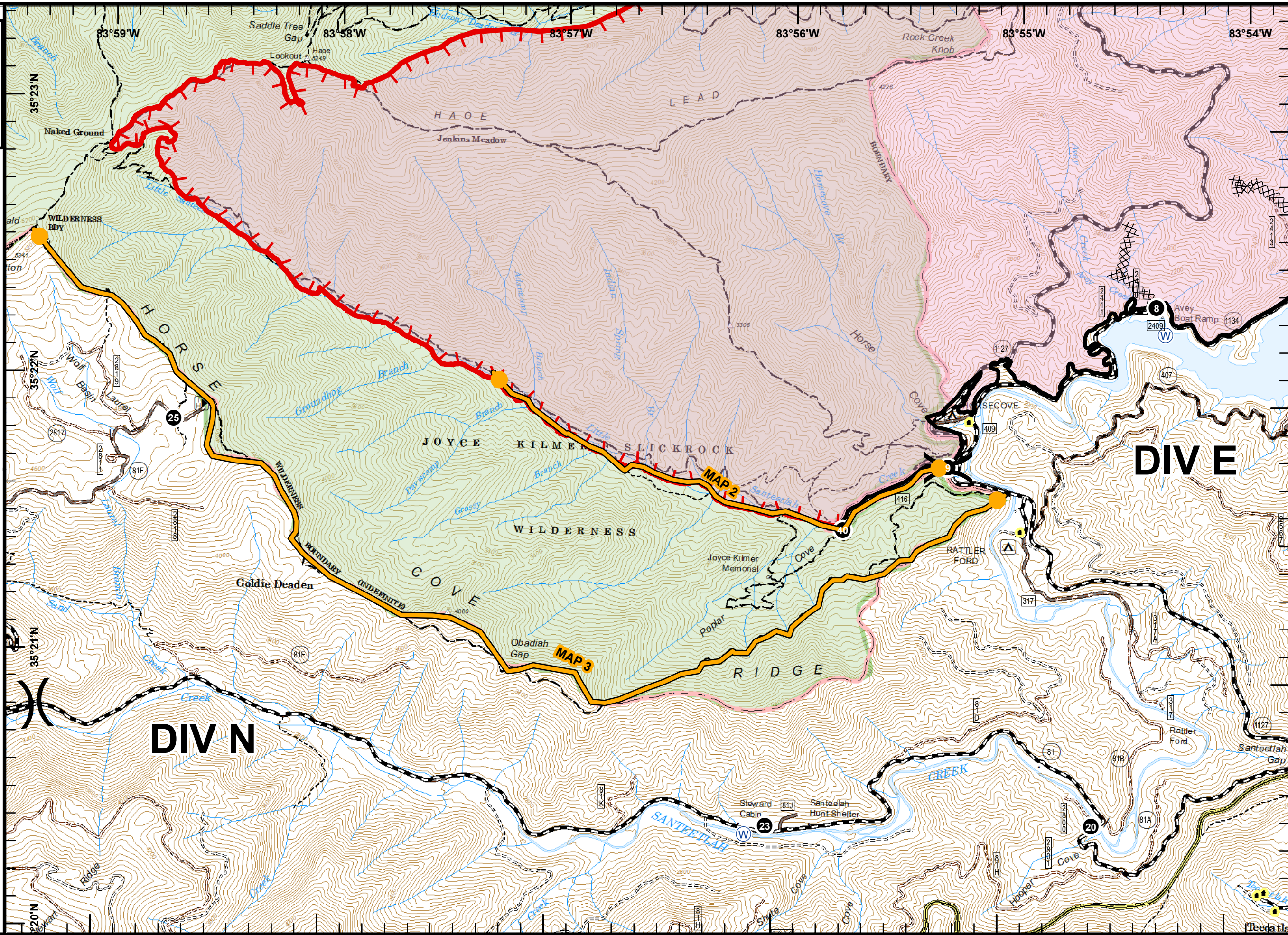
- Legend**
- (X) Division Break
 - Drop Point
 - (W) Water Source
 - ~ Completed Line
 - ⊞ Dozer Line
 - 🔴 Uncontrolled Fire Edge
 - Management Action Point
 - - - US Forest Service Trails
 - ~ Minor Roads
 - ~ US Forest Service Roads
 - Structures



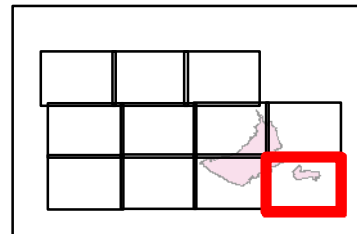
40 ft Contours
 NAD 83 UTM 17



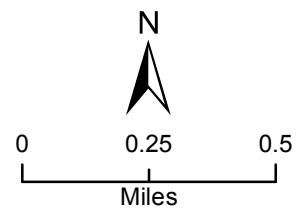
RLM
 November 22, 2016
 1700 Hours



- Legend**
- (X) Division Break
 - Drop Point
 - Helispot
 - (W) Water Source
 - ~ Completed Line
 - ⊞ Dozer Line
 - ⚡ Planned Fire Line
 - Management Action Point
 - - - US Forest Service Trails
 - ~ Minor Roads
 - US Forest Service Roads
 - Structures



40 ft Contours
 NAD 83 UTM 17



RLM
 November 22, 2016
 1700 Hours

