

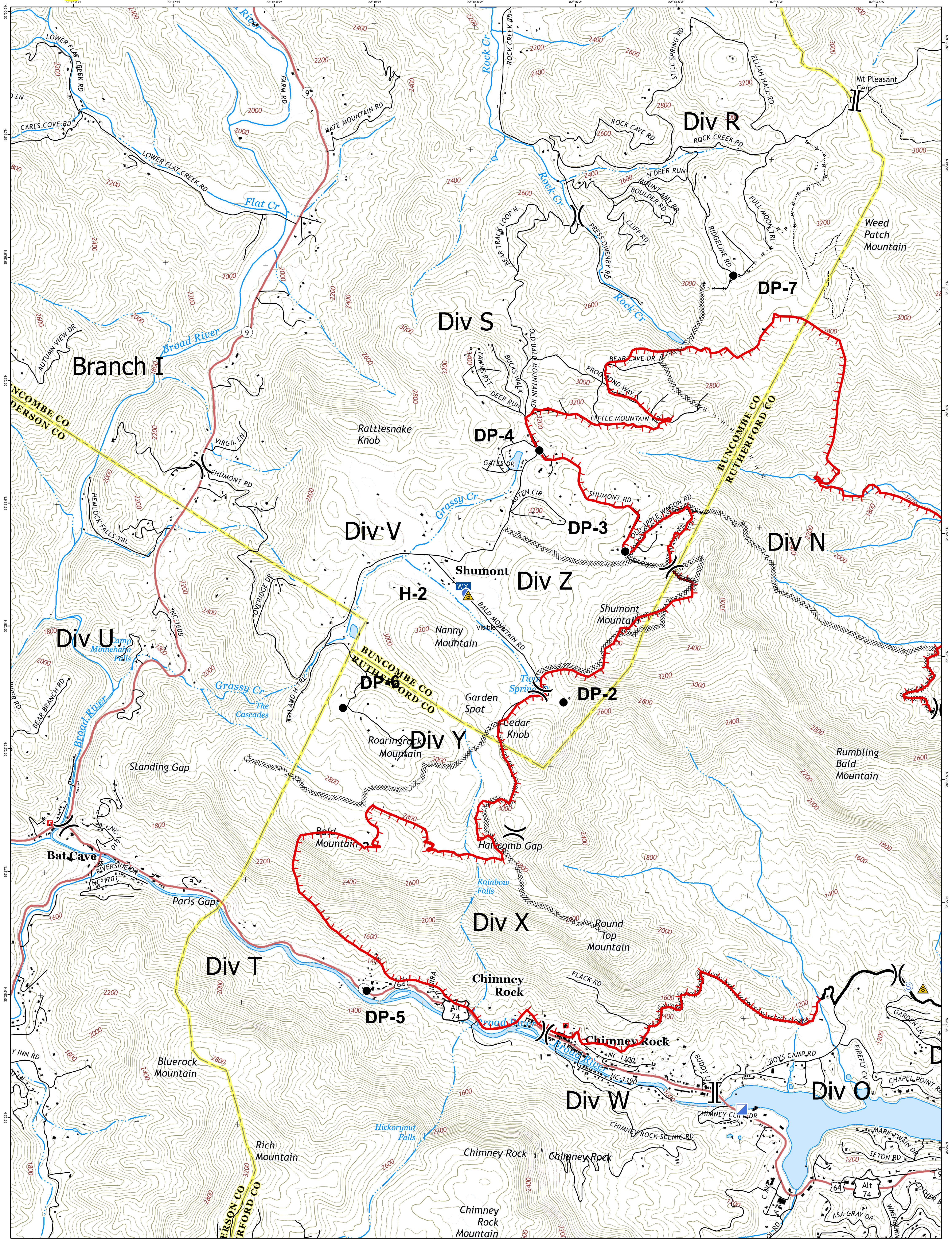


Branch I Operations Map

Party Rock Fire

NC-NCS-160031
Approximate Acreage: 4,421 acres

November 15, 2016



- | | | | | | | | | | |
|--|---------------------|--|--------------------------------|--|----------------------|--|-----------------------|--|--------------------|
| | Division | | Helispot | | Completed Dozer Line | | Structures | | <all other values> |
| | Mobile Weather Unit | | R - R - Road as Completed Line | | H - H - Hand Line | | Completed Line | | Improved Rd |
| | Safety Zone | | Uncontrolled Fire Edge | | Unimproved Rd | | Incident Command Post | | Staging Area |
| | Branch | | Drop Point | | | | | | |

Perimeters shown are based on the best available information at the time of map production. Latest Intel: 20161114 @ 1911



Map Datum: NAD 1983 StatePlane North Carolina FIPS 3200 Feet
Created: M. Sweat GISS
20161114@2250

