

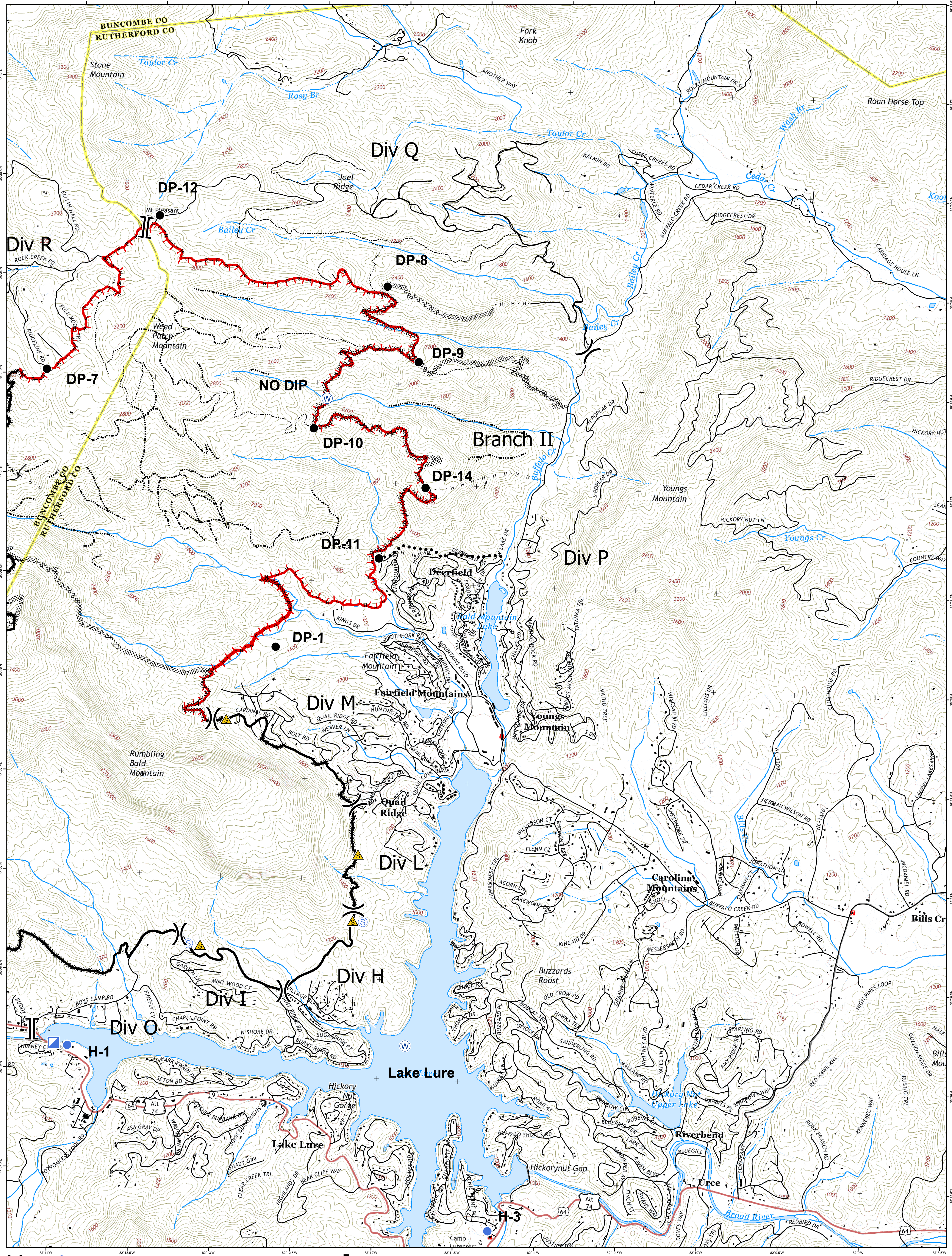


Branch II Operations Map

Party Rock Fire

NC-NCS-160031
Approximate Acreage: 7,171 acres

November 19, 2016



- | | | | | |
|---------------------------|------------------------------|-----------------------------|-------------------|--------------|
| () Division | ● Helispot | XXXXXX Completed Dozer Line | H · H · Hand Line | ■ Structures |
| (W) Water Source | · · · Road as Completed Line | — Completed Line | — Gray Rock Road | |
| (S) Safety Zone | · · · Contingency Line | — Uncontrolled Fire Edge | — Improved Rd | |
| () Branch | ● Drop Point | — Planned Fire Line | — Unimproved | |
| () Incident Command Post | | | | |
| (S) Staging Area | | | | |

Perimeters shown are based on the best available information at the time of map production. Latest Intel: 20161118 @0027



Map Datum: NAD 1983 StatePlane North Carolina FIPS 3200 Feet
Created: M. Sweat GISS
20161119@0115

