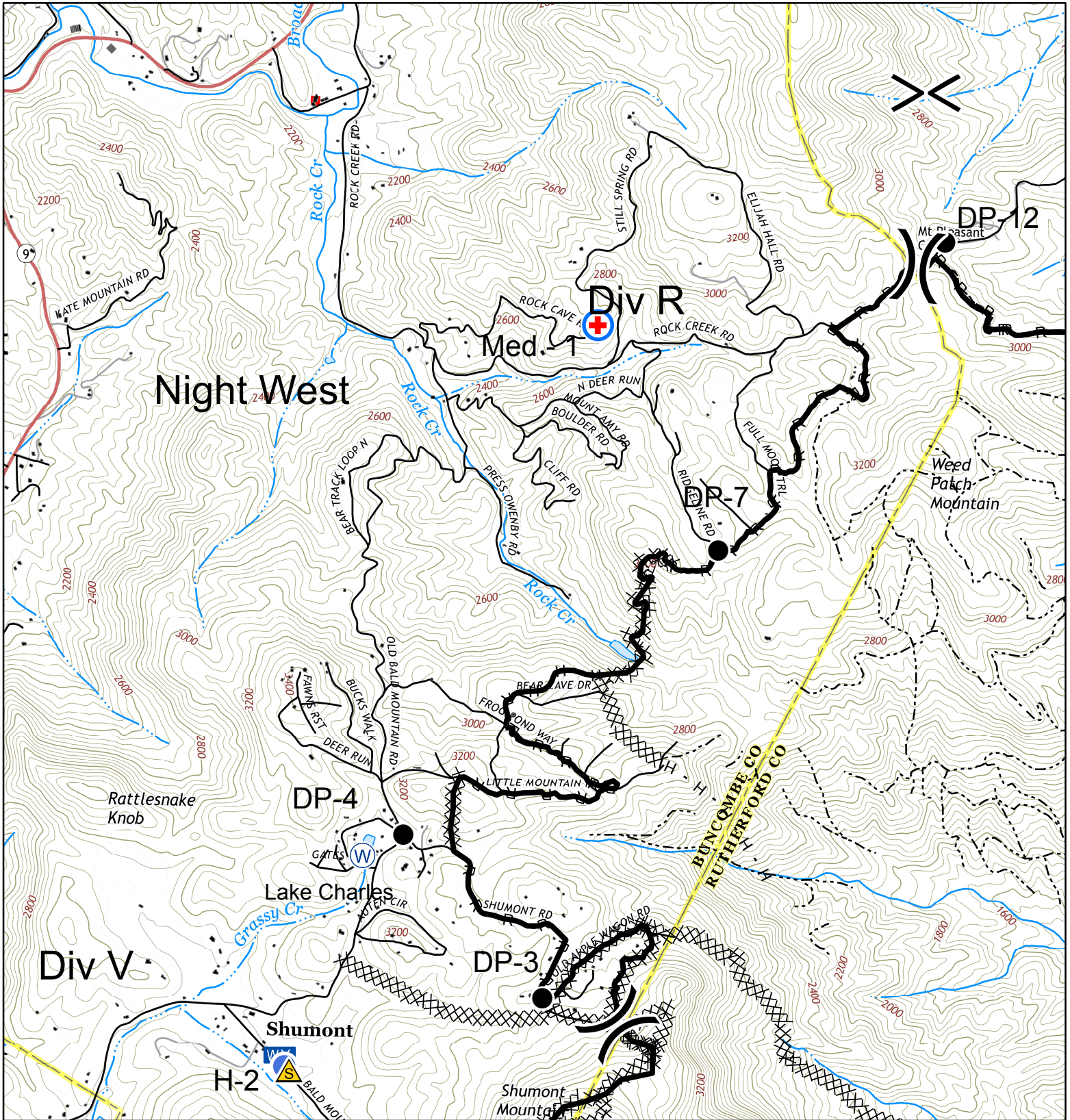




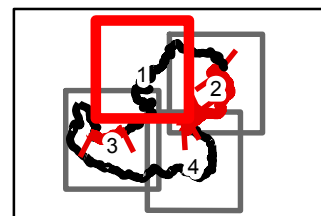
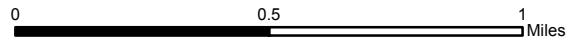
IAP Map Party Rock Fire

NC-NCS-160031
Approximate Acreage: 7,171 acres

November 26, 2016



- Division
- Water Source
- Helispot
- Safety Zone
- Mobile Weather Unit
- Completed Dozer Line
- R - Road as Completed Line
- H - Hand Line
- Completed Line
- Structures
- Local Roads
- Improved Rd
- Unimproved Rd



Map Page 1

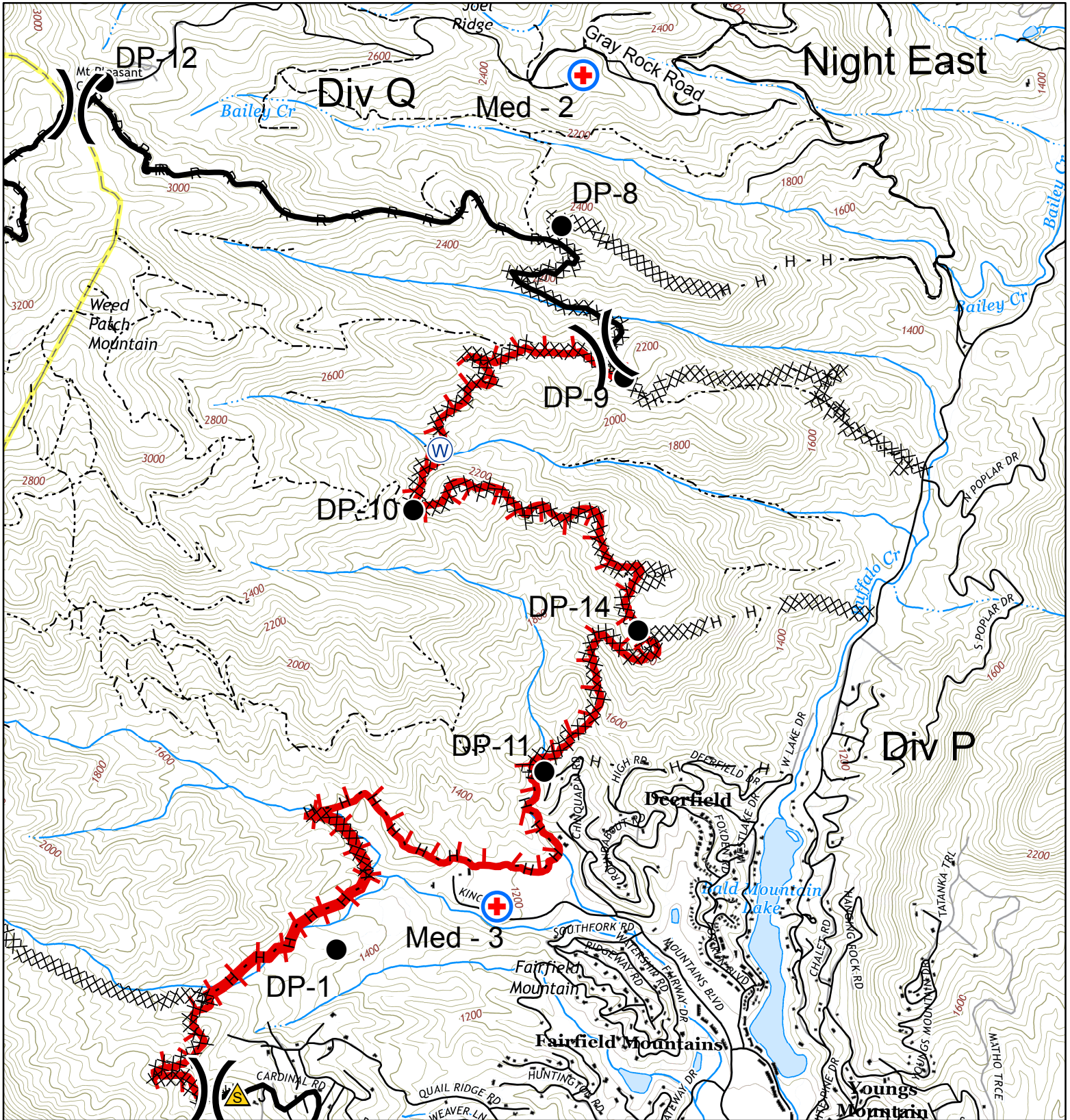
Map Datum: NAD83 Feet
11/25/2016
2051 hrs



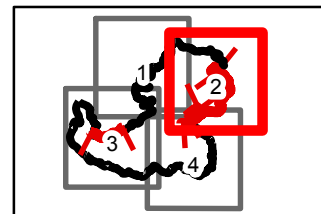
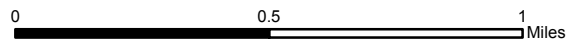
IAP Map Party Rock Fire

NC-NCS-160031
Approximate Acreage: 7,171 acres

November 26, 2016



- Division
- Water Source
- Safety Zone
- MediVac Site
- Drop Point
- Completed Dozer Line
- R - Road as Completed Line
- H - Hand Line
- Completed Line
- Uncontrolled Fire Edge
- Structures
- Local Roads
- Improved Rd
- Unimproved Rd



Map Page 2

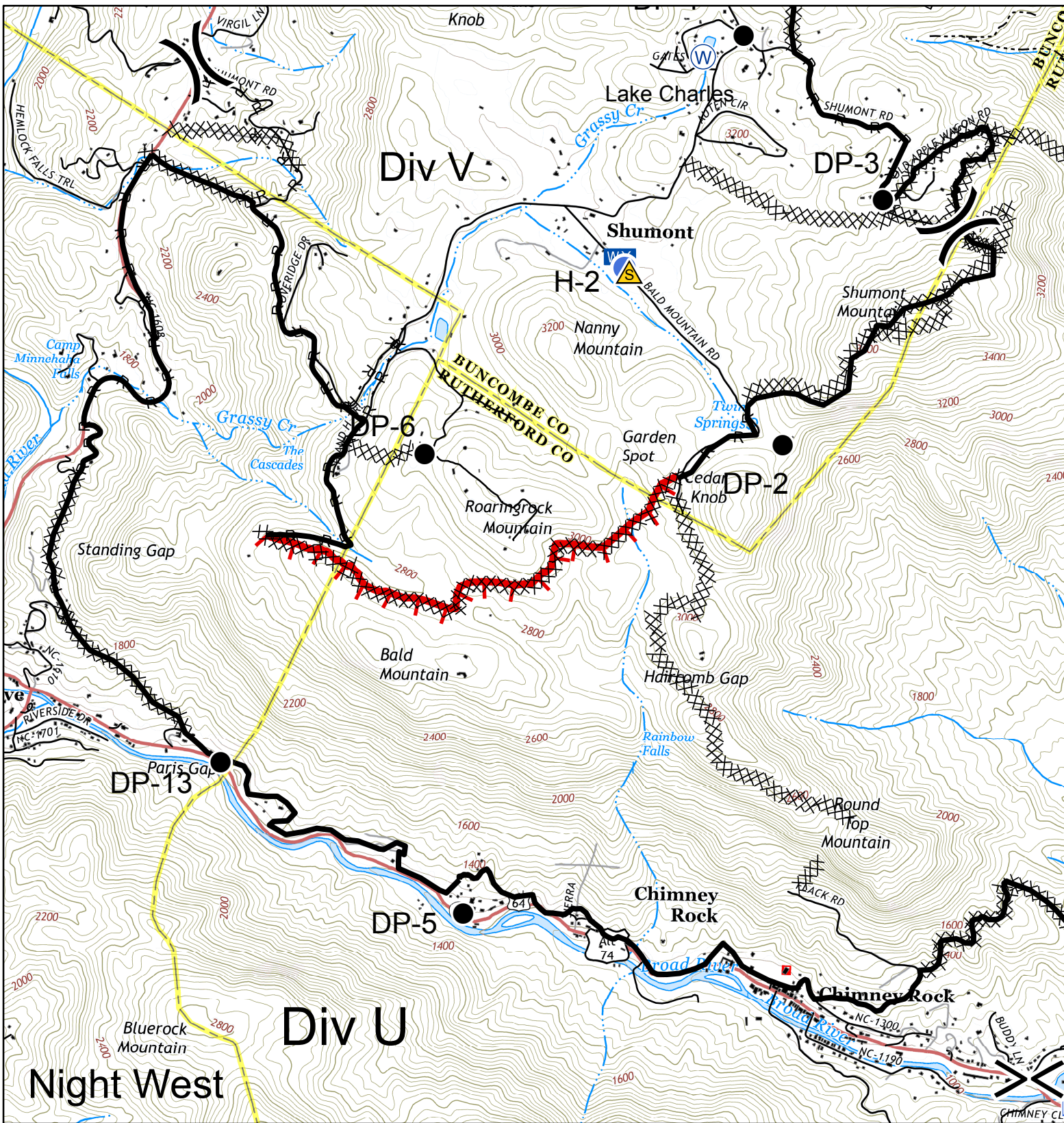
Map Datum: NAD83 Feet
11/25/2016
2051 hrs



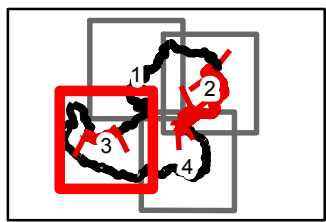
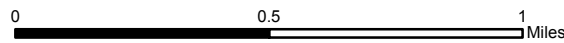
IAP Map Party Rock Fire

NC-NCS-160031
Approximate Acreage: 7,171 acres

November 26, 2016



- Division
- Helispot
- Safety Zone
- Drop Point
- Incident Command Post
- Completed Dozer Line
- R - Road as Completed Line
- H - Hand Line
- Completed Line
- Uncontrolled Fire Edge
- Structures
- Local Roads
- Improved Rd
- Unimproved Rd



Map Page 3

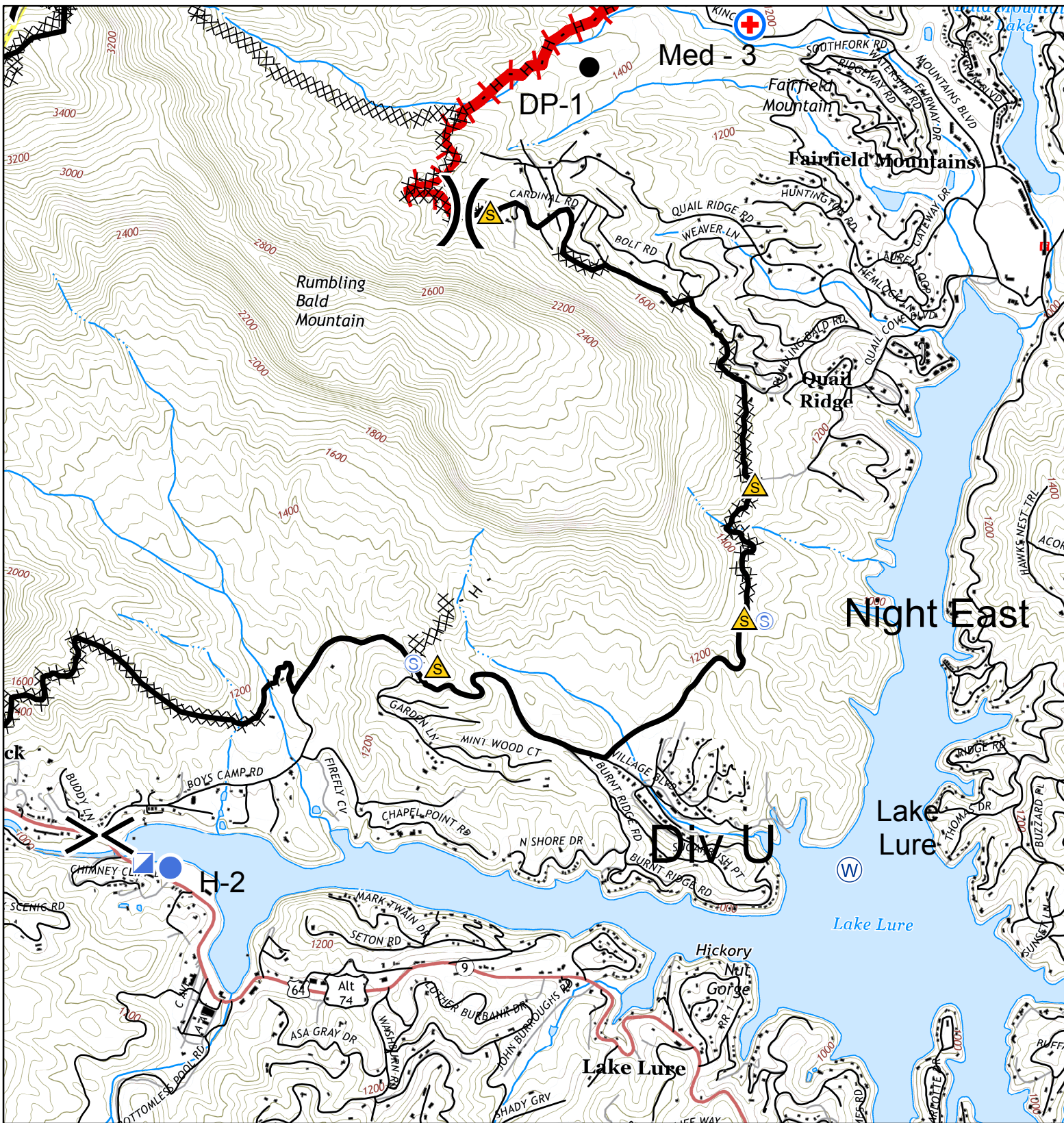
Map Datum: NAD83 Feet
11/25/2016
2052 hrs



IAP Map Party Rock Fire

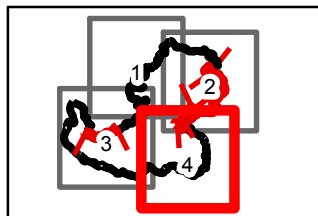
NC-NCS-160031
Approximate Acreage: 7,171 acres

November 26, 2016



- | | | | | | | | |
|--|--------------|--|-----------------------|--|------------------------|--|---------------|
| | Division | | Helispot | | Completed Dozer Line | | Structures |
| | Safety Zone | | Drop Point | | Hand Line | | Local Roads |
| | MediVac Site | | Incident Command Post | | Completed Line | | Improved Rd |
| | Water Source | | Staging Area | | Uncontrolled Fire Edge | | Unimproved Rd |

0 0.5 1 Miles



Map Page 4

Map Datum: NAD83 Feet
11/25/2016
2052 hrs