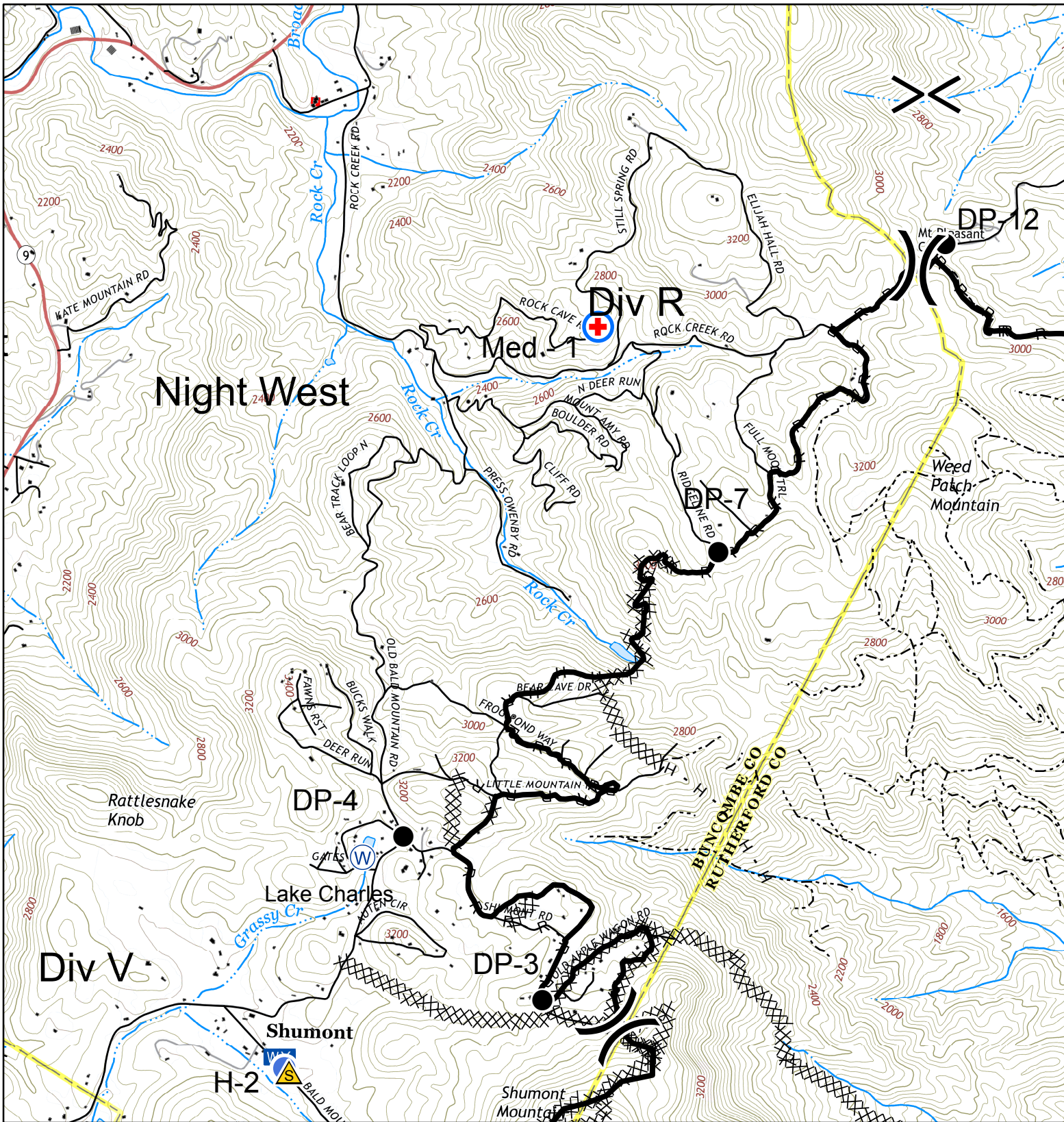




IAP Map Party Rock Fire

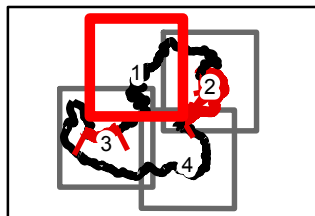
NC-NCS-160031
Approximate Acreage: 7,145 acres

November 28, 2016



- Division
- Water Source
- Helispot
- Safety Zone
- Mobile Weather Unit
- Completed Dozer Line
- R - Road as Completed Line
- H - Hand Line
- Completed Line
- Structures
- Local Roads
- Improved Rd
- Unimproved Rd

0 0.5 1 Miles



Map Page 1

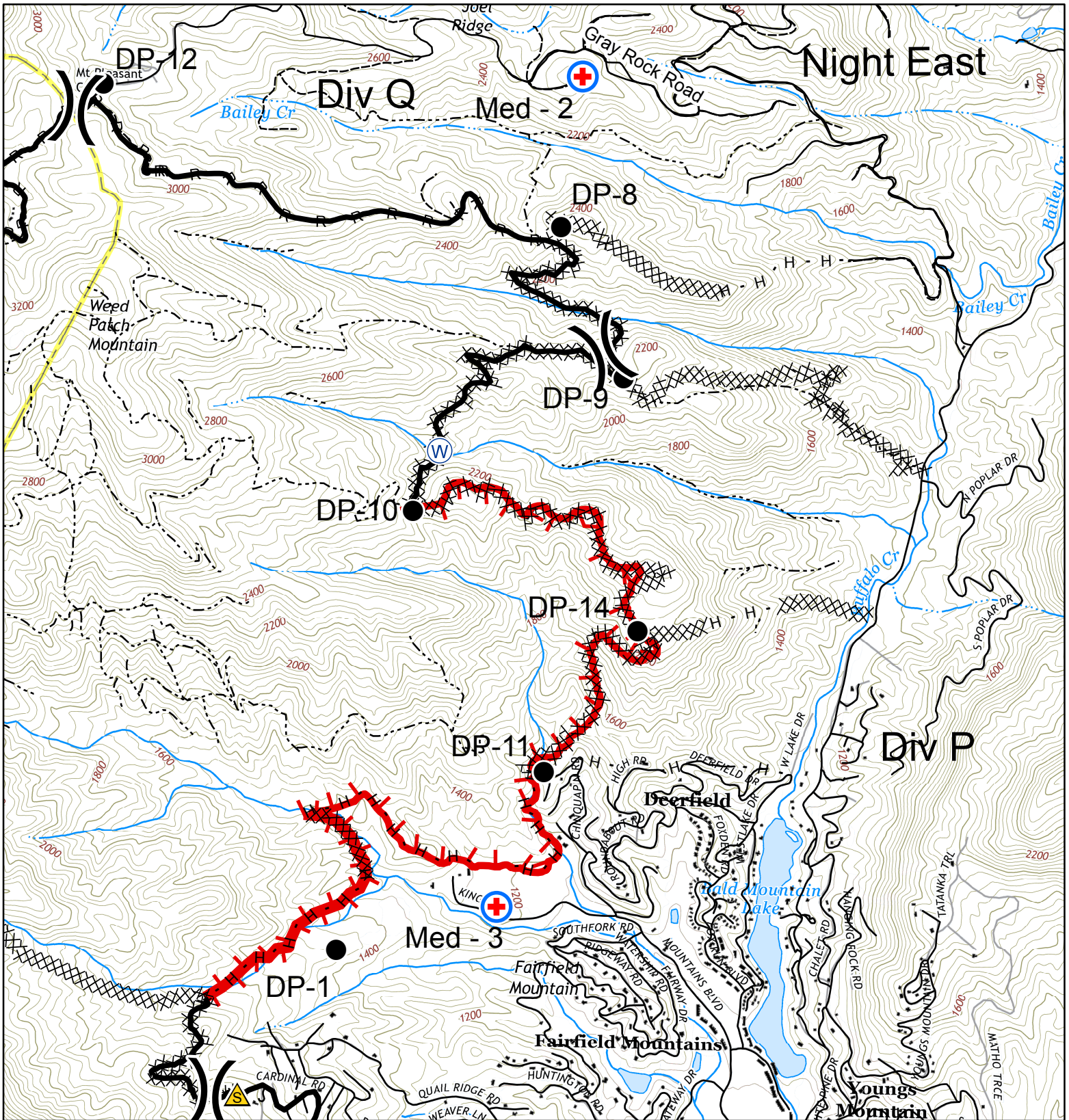
Map Datum: NAD83 Feet
11/27/2016
1945 hrs



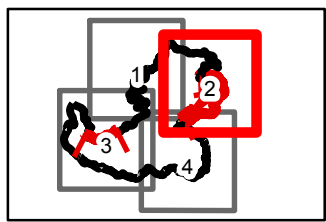
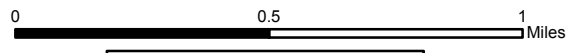
IAP Map Party Rock Fire

NC-NCS-160031
Approximate Acreage: 7,145 acres

November 28, 2016



- Division
- Water Source
- Safety Zone
- MediVac Site
- Drop Point
- Completed Dozer Line
- R - Road as Completed Line
- H - Hand Line
- Completed Line
- Uncontrolled Fire Edge
- Structures
- Local Roads
- Improved Rd
- Unimproved Rd



Map Page 2

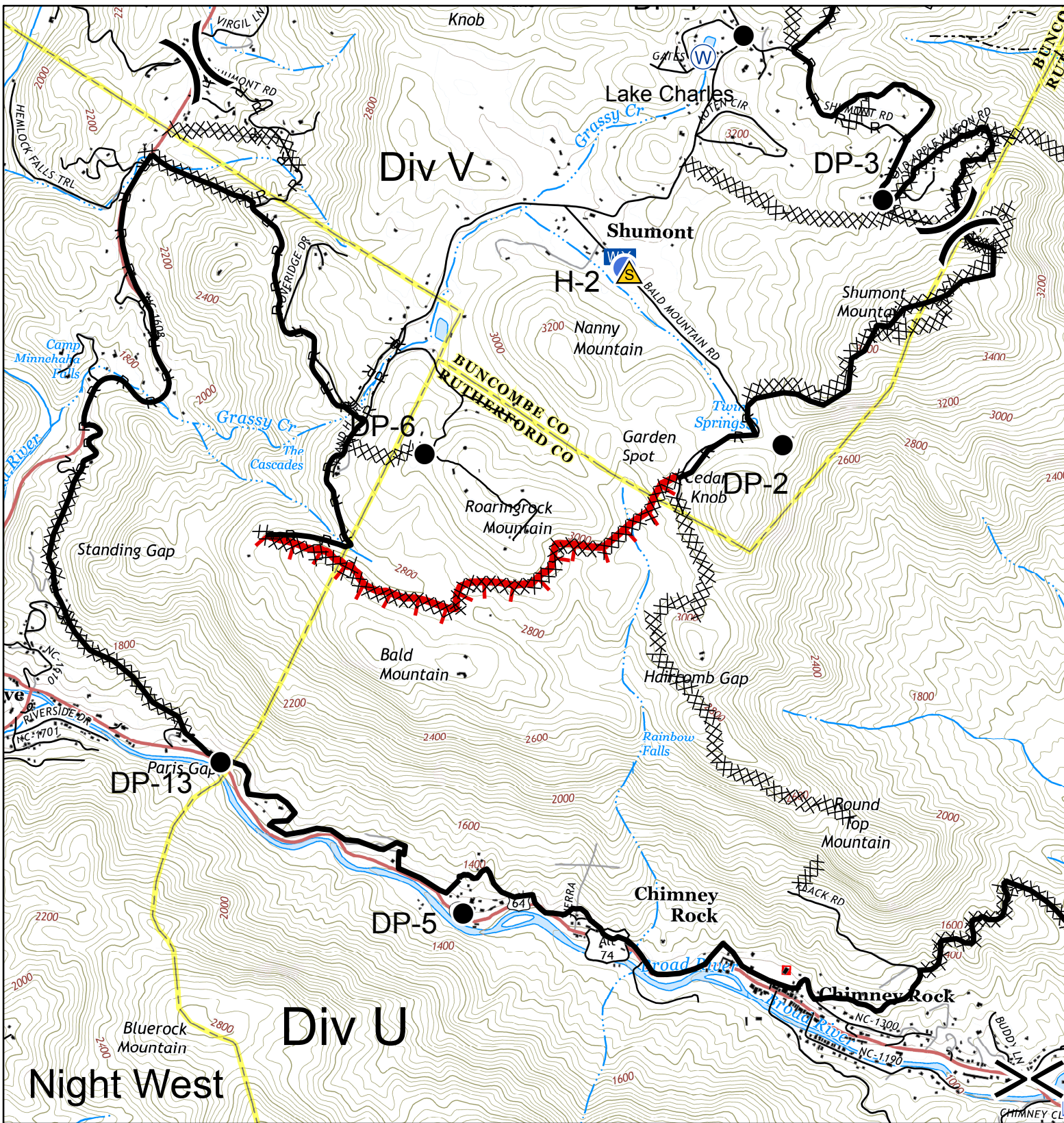
Map Datum: NAD83 Feet
11/27/2016
1946 hrs



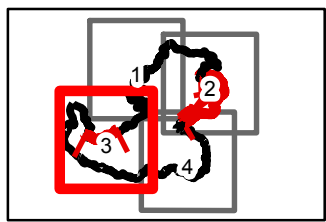
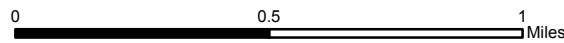
IAP Map Party Rock Fire

NC-NCS-160031
Approximate Acreage: 7,145 acres

November 28, 2016



- Division
- Helispot
- Safety Zone
- Drop Point
- Incident Command Post
- Completed Dozer Line
- R - Road as Completed Line
- H - Hand Line
- Completed Line
- Uncontrolled Fire Edge
- Structures
- Local Roads
- Improved Road
- Unimproved Road



Map Page 3

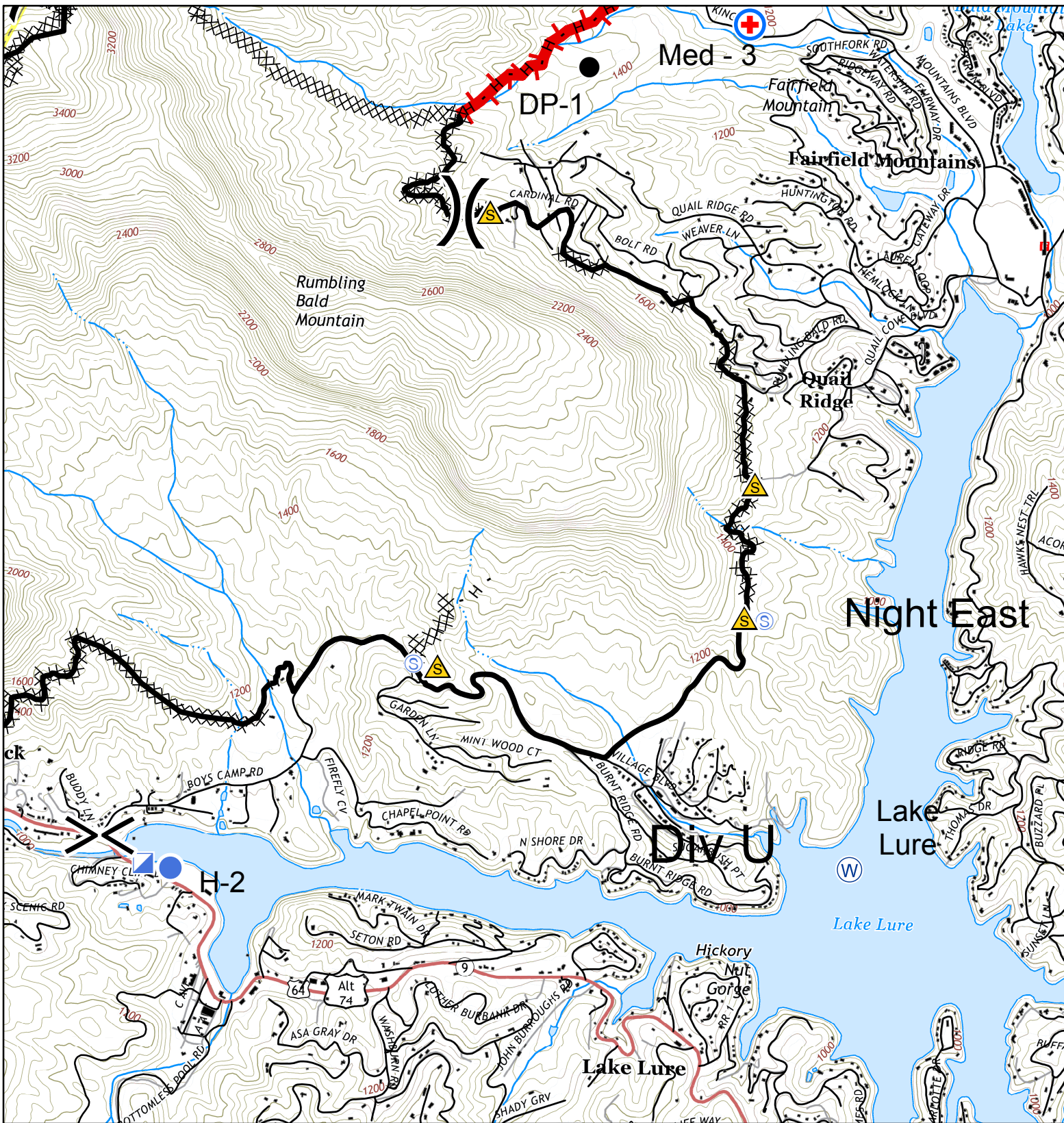
Map Datum: NAD83 Feet
11/27/2016
1946 hrs



IAP Map Party Rock Fire

NC-NCS-160031
Approximate Acreage: 7,145 acres

November 28, 2016



- | | | | |
|--------------|-----------------------|------------------------|---------------|
| | | | |
| Division | Helispot | Completed Dozer Line | Structures |
| | | | |
| Safety Zone | H - Hand Line | Local Roads | Improved Rd |
| | | | |
| MediVac Site | Drop Point | Completed Line | Unimproved Rd |
| | | | |
| Water Source | Incident Command Post | Uncontrolled Fire Edge | |
| | | | |
| Staging Area | | | |

0 0.5 1 Miles

Map Page 4

Map Datum: NAD83 Feet
11/27/2016
1946 hrs