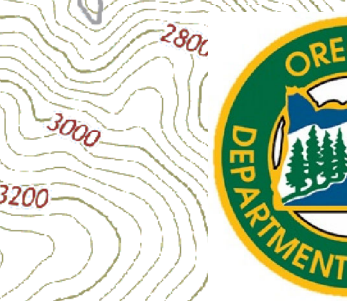


Party Rock Fire

Blue Rock Mountain NC-NCS-160031

Suppression Repair Map

7,142 Acres
Final



ID	Type	RP: Repair Point	DR: Damage Report	DL: Dozer Line	HL: Hand Line	Latitude	Longitude	Description
1	DR/CP-Creek	35° 27.01'	82° 12.24'					Original Report: Creek Rehab needed on dozer crossing where bridge was destroyed. Repair will require clearing out and a tandem load of railroad ballast. This is the existing foot crossing that was impacted by suppression efforts. DIV U reported on 11/24 that it was an old wooden bridge destroyed by dozer operators and that someone from NC Forest Service spoke with the landowner and agreed that the stream crossing would be cleared out, rockbed and made into a ford crossing.
2	RP-Bridge	35° 27.87'	82° 16.83'					A 10' x 12' x 4' small foot bridge is broken and unusable, damaged by fire equipment. It is located NNE of the house. COMPLETED
3	DR-Burned Tractor	35° 28.25'	82° 16.94'					Burned tractor between 600 and 600 Hwy 9. The road has a green gate (marked with pink flagging) on it approximately 100' south of the dozer driveway. Parcel data and ownership found and presented to operations and local fire department.
4	DR-Burned Structures	35° 29.04'	82° 14.61'					2 burned structures at 351 spur road off of the Frog Pond off of the Old Mountain Road. Parcel data and ownership found and presented to operations and local fire department.
5	DR-Dozer Line	35° 27.38'	82° 17.12'					Robert Tedesco stated dozer had scrapped away survey stake. Fire impacted the wire and pipe and trees fell on the pile of under blocks. Survey stake was scraped by a dozer, however it was a necessary location for the fire line. Division Sup Admin inspected the property and indicated not rehab needed since there was no safety, environmental or watershed issues.
6	DR-Dozer Damage	35° 26.64'	82° 14.89'					A dozer exposed an underground electrical line and also knocked over a small transmission box. The line appears to be abandoned, old and not in use. Coordinate plots for private commercial property ownership. COMPLETED
7	DR-Culvert & Road Damage	35° 26.49'	82° 14.63'					Plastic culvert consumed by fire and road has collapsed in the void. Located on Silver City/Flick Road. Road remains passable, however the hole is large. Coordinate plots on large parcel land. No action taken. COMPLETED
8	RP-Snags along Hwy							Snags exist along fire perimeter parallel to Hwy 9/A 74. Area received significant winds, however no power lines or homes have received damage at this time. Idea for action submitted by FOSB involves removing snags to prevent further damage, however with homes and lines would be a complex operation. No action taken. COMPLETED
9	DL-Dozer Line	35° 28.44'	82° 16.90'					Dozer line on steep slope with sedimentation threat to nearby streams. Located from Hwy 9 to Shumont Road. One's done and the terms of debris on both sides. (Div U). COMPLETED
10	DL-Dozer Line	35° 29.61'	82° 11.86'					Dozer line on steep slope. Water Bar/Restoration recommended to address water bar. Lines goes from DP8 East. COMPLETED 2015126
11	HL-Hand Line	35° 29.93'	82° 11.22'					Handline at end of dozer line coming east from bridge and road that appears to have been constructed utilizing leaf blowers minimizing environmental effects. No action recommended. COMPLETED 2015126
12	DL-Dozer Line	35° 29.01'	82° 11.59'					Dozer line from DP9 to Buffalo Creek in good shape. No action recommended. COMPLETED 2015126
13	DL-Dozer Line	35° 29.99'	82° 12.13'					Dozer line from DP8 to DP10 appears to be an old old trail and dozer line was constructed by a skilled operator over or less scraping. FOSB spoke with branch and both felt no repair recommended. COMPLETED 2015126
14	RP-Debris in Stream	35° 27.55'	82° 15.36'					Debris in stream at dozer line. No repair recommended. COMPLETED 2015126
15	DL-Dozer Line	35° 27.59'	82° 15.25'					Mixture of fresh dozer line but predominantly not along old road trail. No repair recommended. COMPLETED 11/23
16	DL-Dozer Line	35° 27.62'	82° 15.33'					DL 3 south to DP2. Old road reinforced with heavy lines & water bars already in place. No rehab needed.
17	DL-Dozer Line	35° 27.89'	82° 15.00'					Cedar knob South to Round Top Mountain. Hand evaluation COMPLETED
18	DR-Private Property Damage	35° 27.18'	82° 15.92'					Appears engine backed over ornamental shrubs. No Action Taken. COMPLETED
19	HL-Hand Line	35° 28.17'	82° 12.87'					1500' of hand line needs water bars. COMPLETED
20	DL-Dozer Line	35° 28.49'	82° 12.74'					1400' of dozer line needs water bars. COMPLETED
21	HL-Hand Line	35° 28.40'	82° 12.41'					1700' of hand line needs water bars. COMPLETED
22	HL-Hand Line	35° 28.44'	82° 12.00'					1800' of hand line needs water bars. COMPLETED
23	DL-Dozer Line	35° 28.65'	82° 12.13'					500' of dozer line needs water bars. COMPLETED
24	HL-Hand Line	35° 28.64'	82° 11.47'					2000' of hand line needs water bars. COMPLETED
25	HL-Hand Line	35° 29.41'	82° 10.96'					Reclosure of road with excavator and needs COMPLETED 2015126
26	RP-Stream	35° 28.04'	82° 13.35'					Stream cut out from DP3 to DP1. Needs repair along and nearby stream crossing via the FOSB and Chimney Rock personnel. Handrow preferred by parks staff. Focus on stream crossing repair. Coordinates of each crossing shown. COMPLETED
27	RP-Dozer Line	35° 28.33'	82° 14.43'					Switchbacks at DP3/branches break. Water Bars have been installed, but poorly and need gone to work via Chimney Rock staff. COMPLETED
28	RP-Dozer Line	35° 26.66'	82° 14.87'					Track Road/Dozer City Road-Dozer line needs attention. COMPLETED
29	RP-Stream @ Dozer Line	35° 27.81'	82° 13.16'					Dozer line at Branch Branch breaks (switchbacks). Stream is dammed up. J Water bars recommended along dozer line per park's staff. COMPLETED
30	RP-Dozer Line	35° 26.88'	82° 12.98'					Incident near & impacts to Roman Gold Acres. Split rail fence damage. Pictures on shared drive. NO REPAIR Recommended via parks staff
31	RP-Stream @ Dozer Line	35° 29.07'	82° 11.17'					DP10 to Buffalo Creek. Dozer line and ephemeral stream need repair. COMPLETED 2015126
32	RP-Dozer Line	35° 28.39'	82° 14.67'					DP3 to Shumont Road. No infringement to creek reported. Repair recommended on upper side via park's staff. 11/24/16: Repair completed and approved by Chimney Rock staff (Kate).
33	DL-Dozer Line	35° 28.35'	82° 14.88'					Stream crossing on DL. Water barbing recommended via park's staff. 12/02/16: Repair completed and approved by Chimney Rock staff (Kate).
34	RP-Dozer Line	35° 28.41'	82° 14.45'					DL at Stream Crossing/ water pooling due to damage from dozer operations. Repair recommended via park's staff. 11/24/16: Repair completed and approved by Chimney Rock staff (Kate).
35	DL-Dozer Line	35° 29.53'	82° 14.36'					DP 7 to Rock Creek. Exits along a road. No repair needed via Division Romeo on 11/23 COMPLETED
36	DL-Dozer Line	35° 28.66'	82° 14.75'					Dozer line constructed around structures. Needs evaluation. COMPLETED
37	DL-Dozer Line	35° 28.98'	82° 14.30'					Line does not exist via Division Romeo on 11/23/17 COMPLETED

Night West

Night East

Div R

Div V

Div U

Div P

Med - 1

Med - 2

Med - 3

H-1

H-2

DP-1

DP-2

DP-3

DP-4

DP-5

DP-6

DP-7

DP-8

DP-9

DP-10

DP-11

DP-12

DP-13

DP-14

001

002

003

004

005

006

007

008

009

010

011

012

013

014

015

016

017

018

019

020

021

022

023

024

025

026

027

028

029

030

031

032

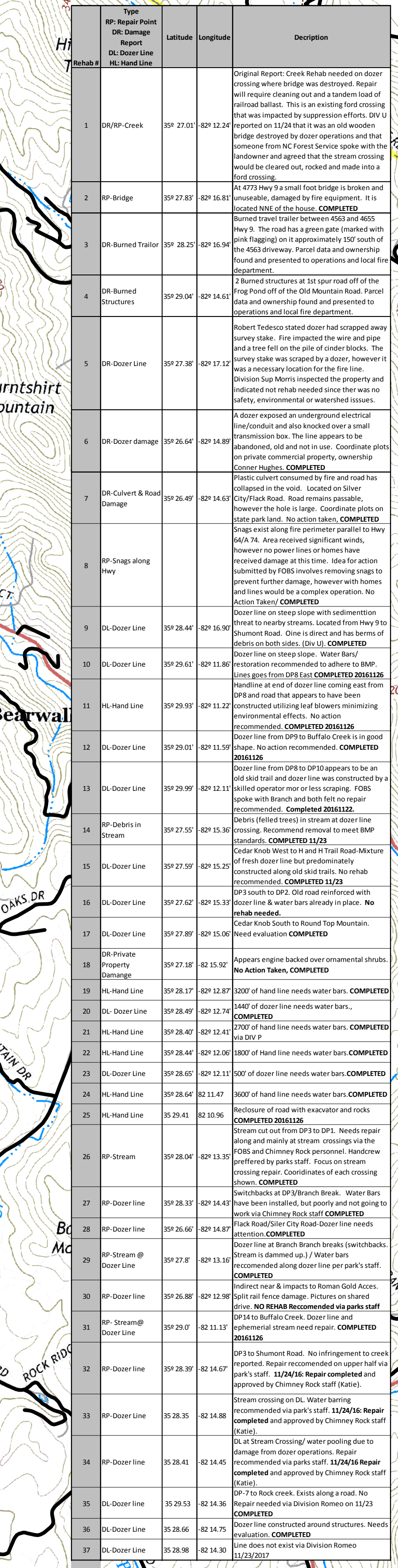
033

034

035

036

037



Legend

- Fire Perimeter
- Needs Evaluation
- Needs Repair
- Repair in Progress
- Repair Completed
- Needs Evaluation
- Needs Repair
- Repair in Progress
- Repair Completed
- Completed Dozer Line
- H - H Hand Line
- Division
- Branch
- W Water Source
- + Med/Vac Site
- S Safety Zone
- Helispot
- WX Mobile Weather Unit
- Drop Point
- Incident Command Post
- S Staging Area
- S Chimney Rock State Park

Scale

0 1/4 1/2 Miles