

# Party Rock Fire

NC-NCS-160031

## Suppression

## Repair Map

7,142 Acres

Final



After wildfires are contained, fireline rehabilitation (or repair) is a common practice to mitigate safety hazards, environmental threats and sedimentation. Pictured below are effective fire control lines constructed by dozers and hand crews during operations.

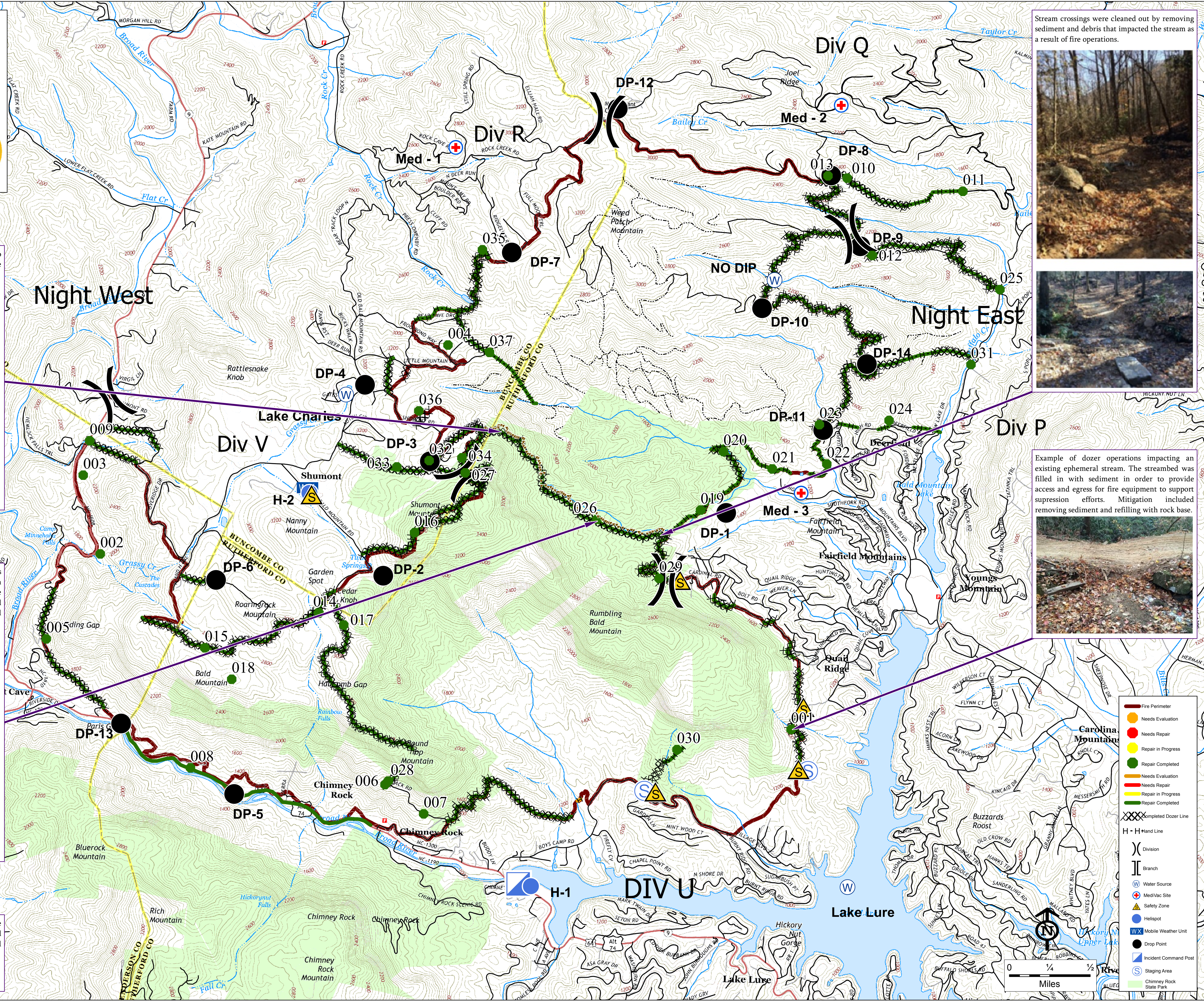


Utilizing assigned equipment and personnel, firefighters moved to rehabilitation efforts concurrent with suppression operations. Constructing water bars to specification is a proven and effective way to ensure water flow does not create undesirable effects in the fire environment. When constructed correctly, water bars will reduce erosion and sedimentation. Shown below are examples of good water bars constructed with dozers and reinforced by hand.



As an example of the size and scale of the rehabilitation efforts, a dozer line atop Old Apple Wagon Road within Chimney Rock State Park was analyzed. 94 water bars were completed along 1.8 miles of line with an elevation difference of 1700 feet. Similar efforts occurred throughout the fire area.

Water bars on Old Apple Wagon Rd.



Stream crossings were cleaned out by removing sediment and debris that impacted the stream as a result of fire operations.



Example of dozer operations impacting an existing ephemeral stream. The streambed was filled in with sediment in order to provide access and egress for fire equipment to support suppression efforts. Mitigation included removing sediment and refilling with rock base.



- Red line: Fire Perimeter
- Yellow circle: Needs Evaluation
- Red circle: Needs Repair
- Yellow circle with green border: Repair in Progress
- Green circle: Repair Completed
- Orange circle: Needs Evaluation
- Red circle: Needs Repair
- Yellow circle with green border: Repair in Progress
- Green circle: Repair Completed
- Black line with 'X': Completed Dozer Line
- H-H: Hand Line
- Black line with 'I': Division
- Black line with 'I': Branch
- Blue circle with 'W': Water Source
- Red circle with 'M': Med/Vac Site
- Blue circle with 'S': Safety Zone
- Blue circle with 'W': Mobile Weather Unit
- Black circle: Drop Point
- Blue circle with 'I': Incident Command Post
- Blue circle with 'S': Staging Area
- Green circle: Chimney Rock State Park

