

Party Rock Fire

NC-NCS-160031


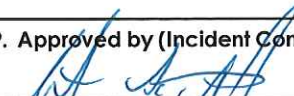
Incident Action Plan

Friday, November 25, 2016

Day shift 0700 – 1900

Night shift 1900 – 0700



| INCIDENT OBJECTIVES | 1. Incident Name Party Rock Fire | 2. Date 11/24/16 | 3. Time 2000 |
|---------------------------------------------------------------------------------------------------------------------------------------------------------------------------------------------------------------------------------------------------------------------------------------------------------------------------------------------------------------------------------------------------------------------------------------------------------------------------------------------------------------------------------------------------------------------------------------------------------------------------------------------------------------------------------------------------------------------------------------------------------------------------------------------------------|-----------------------------------------------------------------------------------------------------------------------------|-------------------------------------------------------------------|-----------------|
| 4. Operational Period: 11/25/16 Day 0700 -1900, Night 1900 – 0700 | | | |
| 5. General Control Objectives for the Incident (include alternatives) <u>Operational Objectives</u> 1. Provide for public and firefighter safety through establishment of LCES, adherence to the 10 standard fire orders / 18 watch out situations and maintaining direct and clear communications with all incident personnel, cooperators, and the general public. 2. Maintain fire in its current perimeter. 3. Keep the general public, local officials and stakeholders informed of fire status through situation updates and personal contacts. 4. Continue work to meet suppression repair standards. 5. Provide for accurate cost tracking and documentation through adherence to Incident Business Handbook procedures and NC Forest Service policy. | | | |
| 6. Weather Forecast for Period - See Attached Weather Forecast | | | |
| 7. General Safety Message - See Attached Safety Message | | | |
| 8. Attachments (mark if attached) | | | |
| <input checked="" type="checkbox"/> Incident Objectives – ICS 202 | <input checked="" type="checkbox"/> Weather Forecast | <input checked="" type="checkbox"/> Communications Plan - ICS 205 | |
| <input checked="" type="checkbox"/> Organization List - ICS 203 | <input checked="" type="checkbox"/> Fire Behavior Forecast | <input checked="" type="checkbox"/> Medical Plan - ICS 206 | |
| <input checked="" type="checkbox"/> Div. Assignment Lists - ICS 204 | <input checked="" type="checkbox"/> Incident Maps | | |
| <input checked="" type="checkbox"/> Safety Message | | | |
| 9. Prepared by (Planning Section Chief)  | 9. Approved by (Incident Commander)  | | |

| ORGANIZATION ASSIGNMENT LIST | | 9. Operations Section | |
|---------------------------------------------|--------------------------------------------------------------------------------------------------------------|------------------------------------------|--------------------------------------|
| 1. Incident Name: PARTY ROCK FIRE | | Field Ops | John Flannigan |
| | | Planning Ops | Bill Smith |
| 2. Date Prepared 11/24/16 | 3. Time 1700 | a. Day Operations | |
| 4. Operational Period 11/25/16 0700-0700 | | Division/Group | P Adam Barnes |
| 5. Command and General Staff | | Division/Group | Q Matt Flock, Stuart Bedke (t) 11/28 |
| Incident Commander | Link Smith | Division/Group | R Logan McCrae, Brian Reel, |
| Deputy Incident Commander | Pat Skrip | Division/Group | U Jason Rayburn, Jim Minturn (11/26) |
| Safety Officer | Ausland Kirk, Mark Atwood 11/28, Opie Blackwell 11/28 | Division/Group | V Ed Wallmark |
| Safety Office Night | Michael Head 11/29 | Suppression Repair Group John Pellissier | |
| Liaison Officer | Larry Goff, Richard McIntyre 11/29 | b. Night Operations | |
| Information Officer | Tom Fields, Lyon 11/28, Storch 11/28, Schwarber 11/27, Truitt 12/01, Scherschel 12/01, Gosschalk 12/01 | Night Operations | |
| 6 Agency Representatives | | Division/Group | Night Neal Bond 11/26 |
| NC State Parks | Sean McElhone | Division/Group | |
| Lake Lure Fire Chief / EM Dir. | Ron Morgan | Division/Group | |
| NCEM W Branch Manager | Greg Atchley | Division/Group | |
| Rutherford Co. EM | Roger Hollifield | Division/Group | |
| Broad River Fire Chief | Brent Hayner | c. Night Operations | |
| Chimney Rock Fire Dept. | Chris Melton | Division/Group | |
| Buncombe Co. Liaison | Jerry Leatherwood | Division/Group | |
| Henderson Co. Asst. Fire Marshall | Jimmy Brissie | Division/Group | |
| NCFS District 1 Rep. | Alan Huskins | Division/Group | |
| Oregon Dept. of Forestry | Don Everingham | Division/Group | |
| NC Forest Service | Sean Brogan | Division/Group | |
| 7. Planning Section | | d. Structure Protection | |
| Chief | Mike Shaw | Division/Group | |
| Resources Unit | Colleen Kiser | Division/Group | |
| Status Check - In | Austin Harriett (t) 11/30 | Division/Group | |
| Situation Unit | Joe Travers, Stuart Coombs (t) 12/02 | Division/Group | |
| GIS Specialist | Katie Morrison, Steven Walterscheld 11/28 | f. Air Operations Branch | |
| Fire Behavior | Mike Haasken | Air Ops Branch Director | Scott Swearingen |
| IMET | Daniel Byrd 11/25 | Air Ops Branch Director | |
| Demobilization Unit | Rob Trickle 11/29 | Helibase Manager | Don Thomas 11/30 |
| Documentation Unit | Teri Parvin 12/5 | Air Support Grp Supervisor | |
| 8. Logistics Section | | Air Tactical Grp Supervisor | Matt Hoehna |
| Chief | Malcolm Hiatt | 10. Finance Section | |
| Service Branch Director | Dawn Sleight | Chief | Keith Dehut |
| Support Branch Director | Steve Wilson | INBA | Patsy Michel 12/04 |
| Supply Unit | Joe Koch | Procurement Unit | |
| Ordering Manager | Melissa Hunter 12/01, James Gacey 11/27 | Time Unit | Stacy Fulker, Sara Thompson 12/01 |
| Receiving / Distribution | Edwin Lee (11/30) | PTRC | Judy Farley 11/29 |
| Ground Support Unit | Jay Morey | EQTR | |
| Equipment Manager | Randy Kearney, Mathew Vellinga 12/02 | Cost Unit | Larry Black |
| Facilities Unit | Nate Sink 12/05 | Compenstaion/ Claims Unit Leader | Rodger Waters 12/02 |
| Food Unit | Vicki Delong, Les Hunter 11/28 | Computer Spec | |
| Medical Unit | Linda Barbee 11/29, Natalia Hayes 11/27 | Prepared by: <i>Colleen Kiser</i> | |
| Communications Unit | Dick Ruble 11/29 | | |
| COMT | | | |
| RADO | James Russell-Stickley 11/29 | | |



Fire Weather Forecast



FORECAST NO: 13
PREDICTION FOR: Day/Night Shift
SHIFT DATE: Friday 11/25/2016
TIME AND DATE ISSUED: 11/24/2016 1900hrs

INCIDENT: Party Rock
UNIT: NC-NCSC
SIGNED: Dan Byrd
 Incident Meteorologist (IMET)

Discussion:

High pressure will build back in over the area today with partly cloudy skies and warm temperatures. A weak cold front will move across the area this evening and will bring in cooler temperatures for Saturday and Sunday. Rh's will fall back to critical values on Sunday with breezy southwest winds. Moisture will increase on Monday out ahead of a strong storm system that will bring showers to the area on Tuesday.

WEATHER FORECAST for Today:

SKY/WEATHER: Areas of Dense Morning fog becoming partly cloudy.

Max Temperature: 64 to 68.

Min RH: 34 to 38 percent.

WINDS: -20 Foot-

Light Southwest becoming Northwest 8 to 12 mph.

Transport Winds: Northwest 12 mph.

Inversion Lifting between 10AM and 11AM

Chance of wetting rain: 0%

LAL: 1

Tonight:

SKY/WEATHER: Partly Cloudy.

Min Temperature: 37-41.

Max RH: 80-90%

WINDS: -20 Foot-

Northwest 10-15 MPH.

Chance of wetting rain: 0%

Saturday:

SKY/WEATHER: Partly Cloudy.

Max Temperature: 56 to 60.

Min RH: 27 to 31 percent.

WINDS: -20 Foot-

Northwest 6 to 9 mph.

Transport Winds: Northwest 10 mph.

Chance of wetting rain: 0%

EXTENDED FORECAST:

Sunday...Partly Cloudy. 59-63. Min RH 22-26%. Winds SW 5-8.

Monday...Partly Cloudy becoming Mostly cloudy. 60-64. Min RH 29-33%. Winds SW 8-12.

Tuesday...Cloudy with showers likely. 59-63. Min RH 43-47%. Winds SW 10-15.

| | | |
|-------------------------------------|----------------------|------------------------|
| Fireline Observations 11/23: | Min T / Max T | Max RH / Min RH |
| NC FIRE RAWS #4 2910' | 47 66 | 95 48% |

| | |
|------------------|-------------|
| Sunrise Fri 0708 | Sunset 1712 |
| Sunrise Sat 0709 | Sunset 1712 |

Source: US Naval Observatory

FIRE BEHAVIOR FORECAST

| | |
|-----------------------------------------------|------------------------------------------------------|
| FORECAST NUMBER: 16 | TYPE OF FIRE: Wildfire |
| FIRE NAME: Party Rock Fire | OPERATIONAL PERIOD: 11/25/2016 Day & Night |
| DATE ISSUED: 11/24/2016 | TIME ISSUED: 1900 |
| UNIT: Chimney Rock State Park, Private | Signed: Mike Haasken FBAN <i>Mike Haasken</i> |

FRIDAY WEATHER SUMMARY:

Max Temp: 66° (+2) **Min RH:** 36% (-12) **Winds (20'):** SW to NW 8-12 **Sky Cover:** Partly Cloudy **CWR:** 0%
Mixing Height: 4,600' **ADI (1-100):** 45 good **Fuel Shading:** 40% **Slope:** 30%

FIRE BEHAVIOR

GENERAL: The predominant fuel types on the Party Rock Fire includes hardwood leaf litter (FM 9/TL6). Thick areas of tall (10-20') Rhododendron (FM5) are also present and burn readily in the understory. Rhododendron has burned on slope runs after preheating during surface fire and also when ignition sources occur downslope. Flame lengths of 15-20 feet in the evening were observed in the Rhodo fuel type. There are pockets of overstory and shrub layers that were scorched by the initial surface fire and are brown and available for reburn. Leaf fall from the killed shrubs and timber has increased due to wind gusts from recent frontal passage creating reburn potential. Long term drying and high temperatures have created unseasonal dry fuel in larger fuel classes. Recent freezing weather has started curing of live herbaceous fuels like grasses.

Forecasted Indices: Based on Rutherford County RAWs

1 hour fuel moisture: 7% (-1); **10 hour fuel moisture:** 8% (-1); **100 hour fuel moisture:** 14% (same)
Energy Release Component: 36 (-1); (90th percentile is 33, 97th percentile is 40)
Burning Index: 31 (-1) **Probability of Ignition:** 50% (+15) **KBDI:** 721 (same)

Expected Fire Behavior: If fire gets established expect moderate rates of spread, large flame lengths and short range spotting. Potential is still there.

Timber Litter (FM9): 3' flame length and Rate of spread 7 ch/hr. on a 30% slope
Shrub (FM5): 11' flame length and Rate of spread 25 ch/hr. on a 30% slope

Local Thresholds: (bold are present) **Temp. over 60°, 20ft winds over 10 mph, RH below 30% and 100hr fuel <15%**

SPECIFIC:

- Continued leaf fall is covering control lines.
- Reburn may occur in leaf fall areas.
- Catching a fire directly will be difficult under these conditions.
- During active fire runs, indirect tactics may be needed.

AIR OPERATIONS

Areas of morning fog burning off by late morning.

SAFETY

Watch Out Situation #14: You feel the weather getting hotter and drier.

| ASSIGNMENT LIST | | 1. Branch | 2. Division/Group | | | |
|-----------------------------------------------------------------------------------------------------------------------------------------------------------------------------------------------------------------------------------------------------------------------------------------------------------------------------------------------------------------------------------------------------|-----------------------------------------|---------------------------|-------------------|-------------------|-------------------|------------------|
| 3. Incident Name | | 4. Operational Period | | | | |
| Party Rock Fire | | Date: 11/25/16 | | Time: 0700 – 1900 | | |
| 5. Operations Personnel | | | | | | |
| Operations Chief | John Flannigan Bill Smith (Planning) | Division/Group Supervisor | Adam Barnes | | | |
| Branch Director | | Air Operations Director | Scott Swearingen | | | |
| 6. Resources Assigned This Period | | | | | | |
| Strike Team/Task Force/ Resource Designator | Leader | Request # | No. Pers. | Last Work Day | Drop Off PT./Time | Pick Up PT./Time |
| Hand Crew – Pacific Oasis | Benjamin Dodds | C-200 | 20 | 11/30 | 0700 | 1900 |
| Hand Crew – Idaho Panhandle IDS#2 | Casey Schelin | C-202 | 20 | 11/25 | 0700 | 1900 |
| STEN | James Stout | O-1031 | 1 | 11/30 | 0700 | 1900 |
| ENG6 E-632 A358154 | Gabriel Castanon | E-1023 | 4 | 11/30 | 0700 | 1900 |
| ENG6 B-405 G111EL | Frank Zupancic | E-1024 | 3 | 11/30 | 0700 | 1900 |
| ENG6 Sundance 603 CH19466 | Mark Bonin | E-1028 | 3 | 11/30 | 0700 | 1900 |
| ENG6 B-192 G097DN | Louis Mirabelli | E-1048 | 3 | 11/30 | 0700 | 1900 |
| ENG6 B-9802 G170DT | Chris Ader | E-1049 | 3 | 11/30 | 0700 | 1900 |
| Safety | Opie Blackwell | O-1025 | 1 | 11/28 | 0700 | 1900 |
| Line Medic | Millie Carson | O-1015 | 1 | 11/27 | 0700 | 1900 |
| Line Medic | Aaron Brumley | O-1045 | 1 | 11/30 | 0700 | 1900 |
| 7. Control Operations | | | | | | |
| <ul style="list-style-type: none"> Monitor, patrol and maintain fireline. Mop-up 100' inside containment perimeter. Maintain situational awareness on snags and mitigate risks. Identify/report impacted areas and conduct suppression repair as appropriate. Begin Palm IR camera work. Support IR crew to locate and extinguish areas of heat. | | | | | | |
| 8. Special Instructions | | | | | | |
| <ul style="list-style-type: none"> Clean up all flagging and trash along firelines. Repair suppression efforts if actions created a safety concern (blocked access roads and ATV trails, damaged gates, etc.) or environmental issues (sedimentation and erosion). | | | | | | |

| 9. Division/Group Communication Summary | | | | | |
|-----------------------------------------|--------------------------------------|----------------|-------------------|-------------------|--|
| Function | Frequency - RX | Frequency - TX | Tone | Channel | |
| Command RPT | | | | EVENT FOX 1 Viper | |
| Tactical | 151.3100 | 151.3100 | 136.5 | INC. 3 | |
| A/G Primary | 167.4250 | 167.4250 | 110.9 | INC. 13 | |
| A/G Secondary | 171.5750 | 171.5750 | 131.8 | INC. 8 | |
| Prepared by (Resource Unit Leader) | Approved by (Planning Section Chief) | | Date | Time | |
| <i>Colleen Kiser</i> | <i>Michael Ash</i> | | November 24, 2016 | 2100 | |

| ASSIGNMENT LIST | | 1. Branch | 2. Division/Group | | | | |
|------------------------------------------------------------------------------------------------------------------------------------------------------------------------------------------------------------------------------------------------------------------------------------------------------------------------------------------------------------------------------------------------------|-----------------------------------------|-----------------------|---------------------------|-------------------|-------------------|------------------|--|
| | | | Quebec | | | | |
| 3. Incident Name | | 4. Operational Period | | | | | |
| Party Rock Fire | | Date: 11/25/16 | | Time: 0700 – 1900 | | | |
| 5. Operations Personnel | | | | | | | |
| Operations Chief | John Flannigan Bill Smith (Planning) | | Division/Group Supervisor | Matt Flock | | | |
| Branch Director | | | Air Operations Director | Scott Swearingen | | | |
| 6. Resources Assigned This Period | | | | | | | |
| Strike Team/Task Force/ Resource Designator | Leader | Request # | No. Pers. | Last Work Day | Drop Off PT./Time | Pick Up PT./Time | |
| ENG6 B-912 G071HC | Jerry McGraw | E-1040 | 3 | 11/30 | 0700 | 1900 | |
| ENG6 CSP621 G862GF | Jason Craven | E-1041 | 3 | 11/30 | 0700 | 1900 | |
| DIVS (IR) | Mike White | O-1061.15 | 1 | 12/05 | 0700 | 1900 | |
| Safety | Opie Blackwell | O-1025 | 1 | 11/28 | 0700 | 1900 | |
| Line Medic – Drop Point 11 | Terry Williamson | O-1065 | 1 | 12/3 | 0700 | 1900 | |
| 7. Control Operations | | | | | | | |
| <ul style="list-style-type: none"> Monitor, patrol and maintain fireline. Mop-up 100' inside containment perimeter. Maintain situational awareness on snags and mitigate risks. Identify/report impacted areas and conduct suppression repair as appropriate. Begin Palm IR camera work. Support IR crews to locate and extinguish areas of heat. | | | | | | | |
| 8. Special Instructions | | | | | | | |
| <ul style="list-style-type: none"> Clean up all flagging and trash along firelines. Repair suppression efforts if actions created a safety concern (blocked access roads and ATV trails, damaged gates, etc.) or environmental issues (sedimentation and erosion). | | | | | | | |
| 9. Division/Group Communication Summary | | | | | | | |
| Function | Frequency - RX | Frequency - TX | Tone | Channel | | | |
| Command RPT | | | | EVENT FOX 1 Viper | | | |
| Tactical | 151.4600 | 151.4600 | 136.5 | INC. 2 | | | |
| A/G Primary | 167.4250 | 167.4250 | 110.9 | INC. 13 | | | |
| A/G Secondary | 171.5750 | 171.5750 | 131.8 | INC. 8 | | | |
| Prepared by (Resource Unit Leader) | Approved by (Planning Section Chief) | | Date | Time | | | |
| <i>Colleen Fiser</i> | <i>Michael Ash</i> | | November 24, 2016 | 2100 | | | |

| ASSIGNMENT LIST | | 1. Branch | 2. Division/Group | | | |
|------------------------------------------------------------------------------------------------------------------------------------------------------------------------------------------------------------------------------------------------------------------------------------------------|-----------------------------------------|---------------------------|--------------------------|-------------------|-------------------|------------------|
| 3. Incident Name | | 4. Operational Period | | 5. | | |
| Party Rock Fire | | Date: 11/25/16 | | Time: 0700 – 1900 | | |
| 5. Operations Personnel | | | | | | |
| Operations Chief | John Flannigan Bill Smith (Planning) | Division/Group Supervisor | Logan McCrae, Brian Reel | | | |
| Branch Director | | Air Operations Director | Scott Swearingen | | | |
| 6. Resources Assigned This Period | | | | | | |
| Strike Team/Task Force/ Resource Designator | Leader | Request # | No. Pers. | Last Work Day | Drop Off PT./Time | Pick Up PT./Time |
| Hand Crew – Mission Valley | Chris McCrea | C-203 | 20 | 11/25 | 0700 | 1900 |
| ENG6 Brush-10 G94491 | Christian Mee | E-1025 | 3 | 11/30 | 0700 | 1900 |
| ENG6 B-261 G021FP | Brian Logsdon | E-1046 | 3 | 11/29 | 0700 | 1900 |
| Safety | Opie Blackwell | O-1025 | 1 | 11/28 | 0700 | 1900 |
| 7. Control Operations | | | | | | |
| <ul style="list-style-type: none"> Monitor, patrol and maintain fireline. Mop-up 100' inside containment perimeter. Maintain situational awareness on snags and mitigate risks. Identify/report impacted areas and conduct suppression repair as appropriate. | | | | | | |
| 8. Special Instructions | | | | | | |
| <ul style="list-style-type: none"> Clean up all flagging and trash along firelines. Repair suppression efforts if actions created a safety concern (blocked access roads and ATV trails, damaged gates, etc.) or environmental issues (sedimentation and erosion). | | | | | | |
| 9. Division/Group Communication Summary | | | | | | |
| Function | Frequency - RX | Frequency - TX | Tone | Channel | | |
| Command RPT | | | | EVENT FOX 1 Viper | | |
| Tactical | 151.2650 | 151.2650 | 136.5 | INC. 4 | | |
| A/G Primary | 167.4250 | 167.4250 | 110.9 | INC. 13 | | |
| A/G Secondary | 171.5750 | 171.5750 | 131.8 | INC. 8 | | |
| Prepared by (Resource Unit Leader) | Approved by (Planning Section Chief) | | Date | Time | | |
| <i>Colleen Kiser</i> | <i>Michael H. Sh</i> | | November 24, 2016 | 2100 | | |

| ASSIGNMENT LIST | | 1. Branch | 2. Division/Group | | Uniform | | |
|------------------------------------------------------------------------------------------------------------------------------------------------------------------------------------------------------------------------------------------------------------------------------------------------|-----------------------------------------|-----------------------------------------|---------------------------|-------------------|-------------------|------------------|--|
| 3. Incident Name Party Rock Fire | | 4. Operational Period Date: 11/25/16 | | Time: 0700 – 1900 | | | |
| 5. Operations Personnel | | | | | | | |
| Operations Chief | John Flannigan Bill Smith (Planning) | | Division/Group Supervisor | Jason Rayburn | | | |
| Branch Director | | | Air Operations Director | Scott Swearingen | | | |
| 6. Resources Assigned This Period | | | | | | | |
| Strike Team/Task Force/ Resource Designator | Leader | Request # | No. Pers. | Last Work Day | Drop Off PT./Time | Pick Up PT./Time | |
| ENG6 Chihuahua GGS170 | Omar Gonzalez | E-1013 | 3 | 11/30 | 0700 | 1900 | |
| ENG6 E-145 G387FW | Nade Galligan | E-1030 | 4 | 11/29 | 0700 | 1900 | |
| ENG6 Carson E-641 A355483 | Rene Arellano | E-1031 | 3 | 12/2 | 0700 | 1900 | |
| Safety | Mark Atwood | O-1007 | 1 | 11/28 | 0700 | 1900 | |
| Line Medic | Karl Larsen | O-1017 | 1 | 11/27 | 0700 | 1900 | |
| | | | | | | | |
| | | | | | | | |
| | | | | | | | |
| | | | | | | | |
| | | | | | | | |
| 7. Control Operations | | | | | | | |
| <ul style="list-style-type: none"> Monitor, patrol and maintain fireline. Mop-up 100' inside containment perimeter. Maintain situational awareness on snags and mitigate risks. Identify/report impacted areas and conduct suppression repair as appropriate. | | | | | | | |
| 8. Special Instructions | | | | | | | |
| <ul style="list-style-type: none"> Clean up all flagging and trash along firelines. Repair suppression efforts if actions created a safety concern (blocked access roads and ATV trails, damaged gates, etc.) or environmental issues (sedimentation and erosion). | | | | | | | |
| 9. Division/Group Communication Summary | | | | | | | |
| Function | Frequency - RX | Frequency - TX | Tone | Channel | | | |
| Command RPT | | | | EVENT FOX 1 Viper | | | |
| Tactical | 151.4600 | 151.4600 | 136.5 | INC. 2 | | | |
| A/G Primary | 167.4250 | 167.4250 | 110.9 | INC. 13 | | | |
| A/G Secondary | 171.5750 | 171.5750 | 131.8 | INC. 8 | | | |
| Prepared by (Resource Unit Leader) | Approved by (Planning Section Chief) | | Date | Time | | | |
| <i>Colleen Kiser</i> | <i>Michael H. Smith</i> | | November 24, 2016 | 2100 | | | |

| ASSIGNMENT LIST | | 1. Branch | 2. Division/Group | | | |
|----------------------------------------------------------------------------------------------------------------------------------------------------------------------------------------------------------------------------------------------------------------------------------------------------------------------------------------|-----------------------------------------|-----------------------------------------|-------------------|-------------------|-------------------|-------------------|
| | | | Victor | | | |
| 3. Incident Name Party Rock Fire | | 4. Operational Period Date: 11/25/16 | | | | Time: 0700 – 1900 |
| 5. Operations Personnel | | | | | | |
| Operations Chief | John Flannigan Bill Smith (Planning) | Division/Group Supervisor | Ed Wallmark | | | |
| Branch Director | | Air Operations Director | Scott Swearingen | | | |
| 6. Resources Assigned This Period | | | | | | |
| Strike Team/Task Force/ Resource Designator | Leader | Request # | No. Pers. | Last Work Day | Drop Off PT./Time | Pick Up PT./Time |
| Task Force Leader | James McCallie | O-13 | 1 | 11/24 | 0700 | 1900 |
| Hand Crew State Parks - Blue | Joseph Shimel | C-15 | 8 | * | 0700 | 1900 |
| Hand Crew – State Parks – Red (w/ E-234) | Austin Paul | C-27 | 8 | * | 0700 | 1900 |
| Type III Dozer Petersen TD8 | Curtis Gehrke / Daniel Wall | E-1010 | 2 | 11/29 | 0700 | 1900 |
| ENG6 AW16 492RMT | Rolf Kist | E-1012 | 2 | 11/30 | 0700 | 1900 |
| ENG6 E-52 CG52364 | Theodore Hebrard | E-1020 | 3 | 11/30 | 0700 | 1900 |
| ENG6 B-11 G090CY | Andres Ojeda | E-1021 | 2 | 11/30 | 0700 | 1900 |
| ENG6 B-31 G098CY | Christopher Teter | E-1038 | 2 | 11/30 | 0700 | 1900 |
| Safety | Mark Atwood | O-1007 | 1 | 11/28 | 0700 | 1900 |
| Line Medic | Karl Larsen | O-1017 | 1 | 11/27 | 0700 | 1900 |
| 7. Control Operations | | | | | | |
| <ul style="list-style-type: none"> Monitor, patrol and maintain fireline. Mop-up 100' inside containment perimeter. Maintain situational awareness on snags and mitigate risks. Identify/report impacted areas and conduct suppression repair as appropriate. | | | | | | |
| 8. Special Instructions | | | | | | |
| <ul style="list-style-type: none"> Clean up all flagging and trash along firelines. Repair suppression efforts if actions created a safety concern (blocked access roads and ATV trails, damaged gates, etc.) or environmental issues (sedimentation and erosion). *Switching crews out every 5 days. | | | | | | |
| 9. Division/Group Communication Summary | | | | | | |
| Function | Frequency - RX | Frequency - TX | Tone | Channel | | |
| Command RPT | | | | EVENT FOX 1 Viper | | |
| Tactical | 151.2800 | 151.2800 | 136.5 | INC. 5 | | |
| A/G Primary | 167.4250 | 167.4250 | 110.9 | INC. 13 | | |
| A/G Secondary | 171.5750 | 171.5750 | 131.8 | INC. 8 | | |
| Prepared by (Resource Unit Leader) | Approved by (Planning Section Chief) | | Date | Time | | |
| <i>Colleen Kiser</i> | <i>Michael B. Sh...</i> | | November 24, 2016 | 2100 | | |

| ASSIGNMENT LIST | | 1. Branch | 2. Division/Group | | | |
|------------------------------------------------------------------------------------------------------------------------------------------------------------------------------------------------------------------------------------------------------------------------------------------------------------------------------------------------------------------------------------------------------------------------------------------------------|----------------|---------------------------------------------------------------|---------------------------|---------------------------|-------------------|------------------|
| | | | Night | | | |
| 3. Incident Name Party Rock Fire | | 4. Operational Period Date: 11/25/16 | | Time: 1900 - 0700 | | |
| 5. Operations Personnel | | | | | | |
| Operations Chief | John Flannigan | | Division/Group Supervisor | Neal Bond | | |
| | | | Air Operations Director | | | |
| 6. Resources Assigned This Period | | | | | | |
| Strike Team/Task Force/ Resource Designator | Leader | Request # | No. Pers. | Last Work Day | Drop Off PT./Time | Pick Up PT./Time |
| TFLD (t) (attached to E-1011) | Jim McCoy | E-1011.3 | 1 | 11/30 | 1900 | 0700 |
| ENG6 E-611A367735 | Brian Sullivan | E-1011 | 3 | 11/30 | 1900 | 0700 |
| ENG6 E-11 930RSG | Larry Martinez | E-1017 | 3 | 11/30 | 1900 | 0700 |
| ENG6 616 946TKA | Kory Bowser | E-1018 | 3 | 11/30 | 1900 | 0700 |
| ENG6 E-316 G929FM | William Black | E-1033 | 3 | 11/30 | 1900 | 0700 |
| ENG6 Guadalupe B-241 G517EX | Joseph Clement | E-1035 | 3 | 11/29 | 1900 | 0700 |
| Safety | Mike Head | O-1027 | 1 | 11/29 | 1900 | 0700 |
| Line Medic | Bryan Crawley | O-1063 | 1 | 11/30 | 1900 | 0700 |
| | | | | | | |
| | | | | | | |
| | | | | | | |
| | | | | | | |
| | | | | | | |
| | | | | | | |
| | | | | | | |
| | | | | | | |
| | | | | | | |
| 7. Control Operations | | | | | | |
| <ul style="list-style-type: none"> Monitor, patrol and maintain fireline. Maintain situational awareness on snags and mitigate risks. | | | | | | |
| 8. Special Instructions | | | | | | |
| <ul style="list-style-type: none"> In the event of an emergency, night shift will call Night Ops who will contact Communications. Communications will contact MEDL and / or Safety. Clean up all flagging and trash along firelines. Repair suppression efforts if actions created a safety concern (blocked access roads and ATV trails, damaged gates, etc.) or environmental issues (sedimentation and erosion). | | | | | | |
| 9. Division/Group Communication Summary | | | | | | |
| Function | Frequency - RX | Frequency - TX | Tone | Channel | Division | |
| Command RPT | | | | FoxTrot 1 | | |
| Tactical | 151.4600 | 151.4600 | 136.5 | INC. 2 | Night | |
| A/G Primary | 167.4250 | 167.4250 | 110.9 | INC. 13 | | |
| A/G Secondary | 171.5750 | 171.5750 | 131.8 | INC. 8 | | |
| Prepared by (Resource Unit Leader) <i>Colleen Fisher</i> | | Approved by (Planning Section Chief) <i>Michael Fisher</i> | | Date November 24, 2016 | Time 2100 | |

| INCIDENT RADIO COMMUNICATIONS PLAN | | | | 1. Incident Name PARTY ROCK FIRE | | 2. Date Time Prepared 11/24/2016 | | 3. Operational Period Date 11/25/2016 | |
|-----------------------------------------------------------|----------------|----------------------------|--------------|-------------------------------------|------|-----------------------------------------|---------|------------------------------------------|--|
| System | Chn./Talk grp. | Function | Frequency | Tone | Mode | Assignment | Remarks | | |
| NCFS BK | INC. 2 | TAC | RX: 151.4600 | 136.5 | N | DAY: Divs Q & U NIGHT: All Divisions | | | |
| | | | TX: 151.4600 | 136.5 | | | | | |
| NCFS BK | INC. 3 | TAC | RX: 151.3100 | 136.5 | N | DAY: Div. P | | | |
| | | | TX: 151.3100 | 136.5 | | | | | |
| NCFS BK | INC. 4 | TAC | RX: 151.2650 | 136.5 | N | DAY: Div. R | | | |
| | | | TX: 151.2650 | 136.5 | | | | | |
| NCFS BK | INC. 5 | TAC | RX: 151.2800 | 136.5 | N | DAY: Divs V | | | |
| | | | TX: 151.2800 | 136.5 | | | | | |
| NCFS BK | INC 8 | AIR TO GROUND PRIMARY | RX: 171.5750 | 131.8 | N | OPERATIONS | | NCFS AIR-TO-GROUND | |
| | | | TX: 171.5750 | 131.8 | | | | | |
| NCFS BK | INC 13 | AIR TO GROUND SECONDARY | RX: 167.4250 | none | N | OPERATIONS | | U.S. AIR-TO-GROUND | |
| | | | TX: 167.4250 | 110.9 | | | | | |
| VIPER | EVENT FOX 1 | COMMAND | RX: _____ | | | OPERATIONS / COMMUNICATIONS | | | |
| VIPER | EVENT FOX 2 | VIPER UTILITY | RX: _____ | | | TO BE ASSIGNED BY COMM | | AS NEEDED | |
| VIPER | EVENT FOX 3 | LOGISTICS | RX: _____ | | | LOGISTICS | | | |
| VIPER | EVENT FOX 4 | OPERATIONS | RX: _____ | | | TO BE ASSIGNED BY OPS | | AS NEEDED | |
| VIPER | EVENT ECHO 2 | OPERATIONS | RX: _____ | | | RUTHERFORD COUNTY | | STRUCTURE PROTECTION | |
| NCFS | NCFS CALL | TAC | RX: 172.2750 | 131.8 | N | TRAVEL | | Use When Traveling | |
| | | | TX: 172.2750 | 131.8 | | | | | |
| NCFS | INC 15 | AIR GUARD | RX: 168.6250 | none | N | AIR GUARD | | EMERGENCY CONTACT WITH AIRCRAFT | |
| | | | TX: 168.6250 | 110.9 | | | | | |
| 5. Prepared by (Communications Unit) Dick Ruble / COM1 | | | | | | | | | |
| COMMUNICATIONS MONITORS COMMAND FOXTROT 1 | | | | | | | | | |
| PARTY ROCK COMMUNICATIONS PHONE # 224-325-7100 | | | | | | | | | |

| | | | | | | | |
|-------------------------------------|--|--------------------------------------------|--|----------------------------|--------------------------|--------------------------|------------------------|
| AIR OPERATIONS SUMMARY 220 | | Prepared By: Scott Swearingen | | Prepared: 11/24/2016 | | Prepared Time: 1730 hrs. | |
| 1. INCIDENT NAME: Party Rock | | 2. OPERATIONAL PERIOD 11/25/2016 | | START TIME: 0800 | END TIME: 1730 | SUNRISE: 0714 | SUNSET: 1717 |

| | |
|--------------------------------------------------------------------------------------------------------------------------------------------------------------------------------------------------------------------------------------------------------------------------------------------------------------------------------------------------------------------------------------------------------------------------------------------------------------------------------------------------------------------------------------------------------------------------------------------------------------------------------|-------------------------------------------------------------------------------------------------------------------------------------------------------------------------------------------------------------------------------------------------------------------------------------------------------------------------|
| <p>3. REMARKS (Safety Notes, Hazards, Air Operations Special Equipment, etc.). AVIATION SAFETY IS A TEAM EFFORT</p> <p style="text-align: center;">AIR OPERATIONS INTENT</p> <p><i>ALL MISSIONS WILL BE ANALYZED IN TERMS OF HAZARDS AND RISKS</i></p> <ul style="list-style-type: none"> • THE RISK ASSESSMENT IS AN OPEN PROCESS WELCOMING INPUT. • HAZARDS WILL BE MITIGATED, RISK WILL BE REDUCED. • RISK MANAGEMENT PROCESS WILL BE DOCUMENTED AND DISPLAYED. <p style="text-align: center;">IF A MISSION FEELS UNSAFE, IDENTIFY SAFE ALTERNATIVES!</p> | <p>4. READY ALERT AIRCRAFT:</p> <p>Medevac Aircraft: MAMA = Mountain Area Medical Airlift See Medical Plan Order through Communications</p> <p>Extraction: North Carolina N.G. @ Macon Co. Airport UH-60 w/hoist+EMT Short Haul T3 heli @ TOC airport in Georgia</p> |
| <p>5. TFR: 618360</p> <p>Altitude: 8000 Feet MSL Frequency: 126.250 Center Point Lat: N 35° 27.00' Long: W 82°14.56'</p> <p>Report aircraft intrusions immediately to Air Attack, Helibase or Air Ops.</p> | |

| 6. PERSONNEL | NAME | PHONE # | 7. FREQUENCIES | AM | FM | 8. FIXED-WING Avail/ Type/ Make-Model/ N#/ Base |
|---------------------|----------------------------------------|----------------------------|---------------------------------|---------|------------------------------|------------------------------------------------------|
| AOBD | Scott Swearingen | 541-580-7485 | TFR Primary | 126.250 | | AIRTANKERS: Order thru ATGS to Asheville Dispatch. |
| ATGS | Matt Hoehna | 541-969-8461 | Secondary Victor | 123.125 | | ATGS Platform - 9AC AS350 |
| HEB2 | Don Thomas | 970-382-1837 | Primary Air/Ground (NFCS A/G) | | 171.5750 tx/rx tone 131.8 | Aircraft Costs e-mail: larry.black@oregon.gov |
| | | | Secondary Air/Ground (USFS A/G) | | 167.4250 Tx tone 110.9 | |
| Party Rock Helibase | Johnson Field @ Hendersonville Airport | 35°18.378 N 82°26.030 W | DECK | | 163.100 | Dispatch: R-3 Asheville 828-665-8688 |
| | | | Air Guard | | 168.6250 (110.9 TX) | |

9. HELICOPTERS (Use Additional Sheets as Necessary)

| FAA # | TY | MAKE/ MODEL | BASE | AVAIL | START | REMARKS | FAA # | TY | MAKE/ MODEL | BASE | AVAIL | START | REMARKS |
|-------|----|-------------|---------------------|-------|-------|-----------------------------------------|-------|----|-------------|------|-------|-------|---------|
| 9AC | 3 | AS-350 | Party Rock Helibase | 0800 | 0700 | AA/Recon/PSD/IA A-30 | | | | | | | |
| 15F | 2 | UH1H | Party Rock Helibase | 0800 | 0700 | Water Drops A-31 (Unavail. 1/127-11/28) | | | | | | | |

DIP SITES -Lake Lure N35 26.17 x W82 11.83 Lake Charles N35 28.73 x W82 15.23
HELISPOTS—H-2: N35 28.195 x W82 15.449 H-3: N35 25.277 x W82 11.854

HEALTH AND SAFETY MESSAGE

SAFETY starts with *YOU*

We are ALL accountable for SAFE behaviors

INCIDENT: Party Rock

DATE: 11/25/16

Operational Period: Day/Night

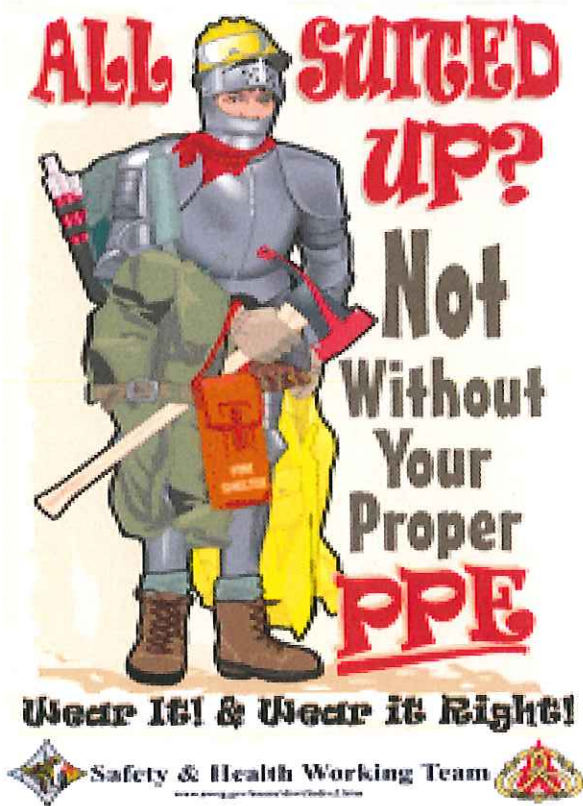
Major Hazards and Risks:

Driving - Supervisor and drivers are responsible for the safety of their passengers and crews. Please drive cautiously to and from the fire-line. Slow Down! Be polite and courteous. Headlights on at all times. Yield to pedestrians. Watch for children. Seatbelts at all times. Obey all traffic laws.

Personal Protective Equipment: Is designed for your safety, but it won't work if you don't use it properly. Wear it, Use it! Watch out for each other. Don't let your co-worker work without their safety equipment.

Mop Up: Eye protection is a must. Wear goggles or safety glasses. Watch for burned out stump holes. **Slips, trips, and falls are the number one cause of injury for natural resources employees in North Carolina.**

Fire Order of the Day – Fight fire Safely and aggressively



FATIGUE & COMPLACENCY: It's up to each of us to identify, control, and mitigate fatigue factors. Fatigue leads to complacency, and complacency leads to poor decisions. Monitor yourself and your crew for fatigue, and deal with it before fatigue deals with you. Ensure that you, and the folks under your care, are getting enough sleep, proper nutrition, and drinking enough water. Challenge yourself to focus on the task at hand, maintain a positive attitude, continue to work toward the objectives, and encourage fellow workers to adhere to all the safety fundamentals.

Incident Safety Officer: Kirk Ausland

Smith Type 1 IMT

LCES Analysis of Tactical Actions

| Incident Name: | | Operational Period: | |
|----------------------------------------------------------------------------------------------------------------------------------------------------------------------------------|---|---------------------------------------------------------------|---------|
| Party Rock Fire | | 11/25/16 Day (0700 - 1900) Night (1900 - 0700) | |
| Date and Time Prepared: | | Divisions/Groups | |
| 11/24/16 1405 | | Night E | Camp |
| TACTICAL HAZARDS | | P | Q |
| | | R | U |
| | | V | Night W |
| | | X | X |
| Underslung Fireline | X | X | X |
| Mid-Slope Fireline | X | X | X |
| Extreme Conditions (Fuels) | X | X | X |
| Unburned Area / Reburn Potential | X | X | X |
| Hazard Trees | X | X | X |
| Steep Terrain (footing, rocks) | X | X | X |
| Transportation | X | X | X |
| Communications | X | X | X |
| Structure Protection | X | X | X |
| Air Operations (multiple aircraft, line support) | X | X | X |
| Mechanical Equipment | X | X | X |
| Wildlife | X | X | X |
| Parking | | | X |
| Lighting (Low) | | | X |
| Food area | | | X |
| Prepared: 11/24/16 | | Safety Officers: Kirk Ausland (SOF1), Mark Atwood (SOF2 T) | |
| | | <i>Kirk Atwood</i> | |
| Mitigations | | | |
| Monitor (look outs, patrols) lines to ensure fire doesn't cross. Position remaining fuels to prevent roll out. Identify escape routes and nearest safety zones. | | | |
| Monitor (look outs, patrols) lines. Position fuels to prevent roll out. Identify escape routes and nearest safety zones. | | | |
| Prevent embers from becoming established through pretreating (water, retardent) unburned fuels near control lines. | | | |
| Monitor burned area and control lines to ensure leaves don't accumulate. | | | |
| IRPG Pg. 79, Identify and flag hazard trees. Look Up, Down and Around. | | | |
| Watch footing and maintain spacing. Be aware and notify others of rolling material. | | | |
| Reduce speeds, Drive defensively. Park vehicles for egress (back in), use spotters. Follow traffic plans. Use seatbelts, headlights, & keep windshields clean. | | | |
| Ensure radio is cloned with the current communications plan and scan appropriate channels. Test prior to engaging fire, check during operational period. | | | |
| If structural resources are needed they can be reached on ECHO 2 (Viper radio channel 2) Notify communications first. | | | |
| Monitor air to ground. Flight follow through Incident Air Attack. Keep drop areas clear of personnel. IRPG pg 44. | | | |
| Use PPE, ensure all safety devices are functional. Establish eye contact with operator before approaching equipment. Maintain proper spacing from equipment working in the area. | | | |
| Avoid disposing of uneaten food on the line and use refuse containers in camp. | | | |
| Follow traffic patterns. Use spotters when backing. Watch for individuals on foot. | | | |
| Carry a flashlight and avoid dark areas. | | | |
| Watch for tripping hazards and other people. Wash hands prior to eating. | | | |

MEDICAL PLAN (ICS 206 WF)

| | |
|---------------------------------|-----------------------------------------------------|
| 1. Incident/Project Name | 2. Operational Period |
| Party Rock Fire | 11/25/2016 <small>Click here to enter text.</small> |

| 3. Ambulance Services | | | |
|-----------------------|------------------------------------------|----------------------------|--------------------------------------------|
| Name | Complete Address | Phone & EMS Frequency | Advanced Life Support (ALS) Yes No |
| Buncombe County EMS | 164 Erwin Hills Rd. Ashville, NC. 28806 | Commo Fox 1 (828) 250-6650 | X |
| Rutherford County EMS | 140 Bills Creek Rd. Lake Lure, NC. 28746 | Commo Fox 1 911 | X |
| Henderson County EMS | 820 N. Justice St. Henderson, NC. 28791 | Commo Fox 1 (828) 687-4912 | X |

| 4. Air Ambulance Services | | |
|--------------------------------------|-------------|-------------------------------|
| Name | Phone | Type of Aircraft & Capability |
| (MAMA) Mountain Area Medical Airlift | Commo Fox 1 | ALS Night Capable |
| HART / SHORT HAUL SHIP | Commo Fox 1 | BLS Night capable |

| 5. Hospitals | | | | | | | | |
|----------------------------------------------|---------------------------------------------------------------------------------------------------------------------|-----------------------------------|-----------------------------|---------|----------------|------------------------|-----------------------------|------------------------------|
| Name Complete Address | GPS Datum – WGS 84 Coordinate Standard Degrees Decimal Minutes DD° MM.MMM' N - Lat DD° MM.MMM' W - Long | | Travel Time Air Gnd | | Phone | Helipad Yes No | | Level of Care Facility |
| | Pardee Hospital Henderson, NC. | Lat: 35.320854 Long: 82.467751 | | | | 30 min. | (828) 696-1000 | |
| Mission Hospital Ashville, NC. | Lat: 35.576592 Long: 82.549216 | | 8 min | 40 min. | (828) 213-1111 | X | Level 2 Trauma Center | |
| Rutherford Reg Med Ctr Rutherfordton, NC. | Lat: 33.482975 Long: 82.090135 | | 1hr | 3hr | (828) 286-5000 | X | Level 2, NO Trauma | |
| Joseph M. Still Burn Centr Augusta, Ga | Lat: 33.485974 Long: 82.094691 | | 1hr | 3hr | (706) 651-6661 | X | Burn Center | |

LINE EMERGENCY:
Crew Supervisor is to contact DIVS w/ patient complaint/condition and location.

- Division Supervisor contacts:
 - Line EMT/Paramedic
 - Communications Unit

DIVS will run medical emergency on Command Channel Fox 1
*** Communication will Clear Command Channel for Emergency Traffic.

Communications will contact:

- Medical Unit
- Safety
- Operations

Medical Unit will:

1. Assess Level of care needed.
2. Coordinate the appropriate resources.
3. Notify receiving hospital.

CAMP EMERGENCY: (Illness or Injury)
Contact Medical Unit with patient complaint/condition and location.

Medical Unit will:

- Respond to incident
- Contact:
 1. Communications
 2. Safety
 3. Logistics
 4. Operations
 5. Crew Supervisor

INJURY REPORTING PROCEDURES

NATURE OF INJURY _____ #Pts _____

LOCATION OF PATIENT _____

SPECIAL RESCUE/EXTRICATION NEEDS _____

TRANSPORTATION REQUESTED BY: AIR _____ GRD _____

“MEDI-VAC” = LIFE THREATENING EMERGENCIES ONLY

“GROUND MEDICAL TRANSPORT” = NON-LIFETHREATENING INJURIES/ILLNESS.

RONDEZVOUS
POINT OF PICKUP _____

LAT _____ LONG _____

PATIENT UNIT ID _____

IS A EMT WITH PATIENT: YES _____ NO _____

AGE _____ SEX: MALE _____ FEMALE _____

ALL EMERGENCIES --- Secure the area and identify witnesses for later investigation. Keep an accurate log of events.

NOTES:

KEEP CALM

| | | |
|--------------|-------------------------------------------------|---------------------------------------------|
| ICS 206 8-78 | 9. PREPARED BY (MEDICAL UNIT LEADER) | 10. REVIEWED BY (SAFETY OFFICER) |
|--------------|-------------------------------------------------|---------------------------------------------|

Meal Times

➤ **Breakfast: 0600 – 0830**

Day Shift pick up bag lunches at breakfast.

➤ **Dinner: 1800 – 2000**

Night Shift pick up bag meals at dinner.

FINANCE TIPS

COMPLETING SHIFT TICKETS

Beginning 11/25/16 you are encouraged to show meal periods on your time records according to your agencies policy or contract. If you do not show a meal period, you must document the reason in the remarks section.

Supervisors please approve appropriately.

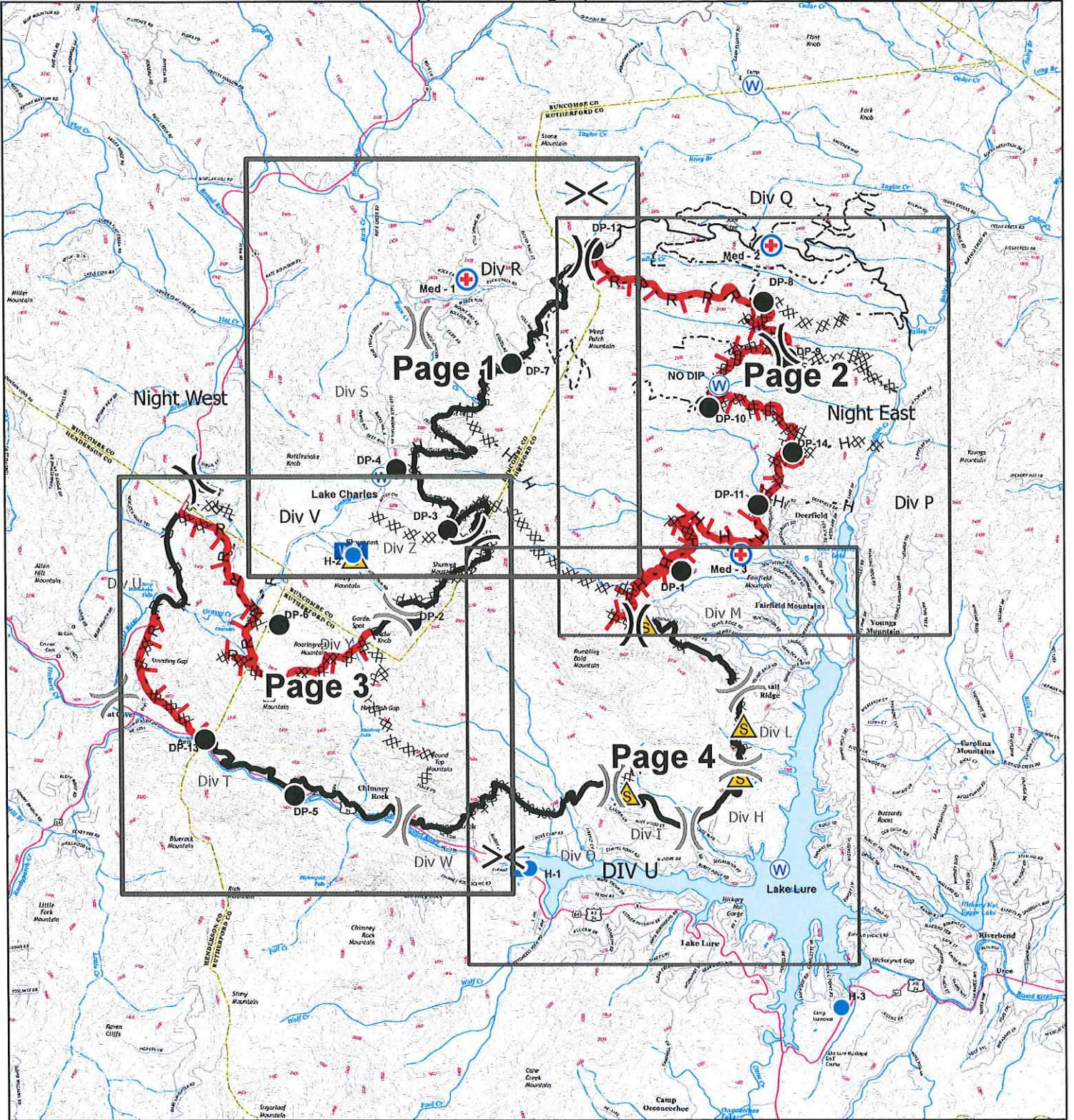


IAP Index Map Party Rock Fire

November 25, 2016

NC-NCS-160031

Approximate Acreage: 7,171 acres



- Sector
- Division
- MediVac Site
- Water Source
- Drop Point
- Helispot
- Incident Command Post
- Mobile Weather Unit
- Safety Zone
- Slaging Area
- Uncontrolled Fire Edge
- Completed Dozer Line
- Completed Line
- H - Hand Line
- R - Road as Completed Line
- Local Roads
- Improved Rd
- Unimproved Rd



Perimeters shown are based on the best available information at the time of map production.
Latest Intel: 20161122 @ 1600

Map Datum: NAD83 Feet
11/24/2016
2134 hrs

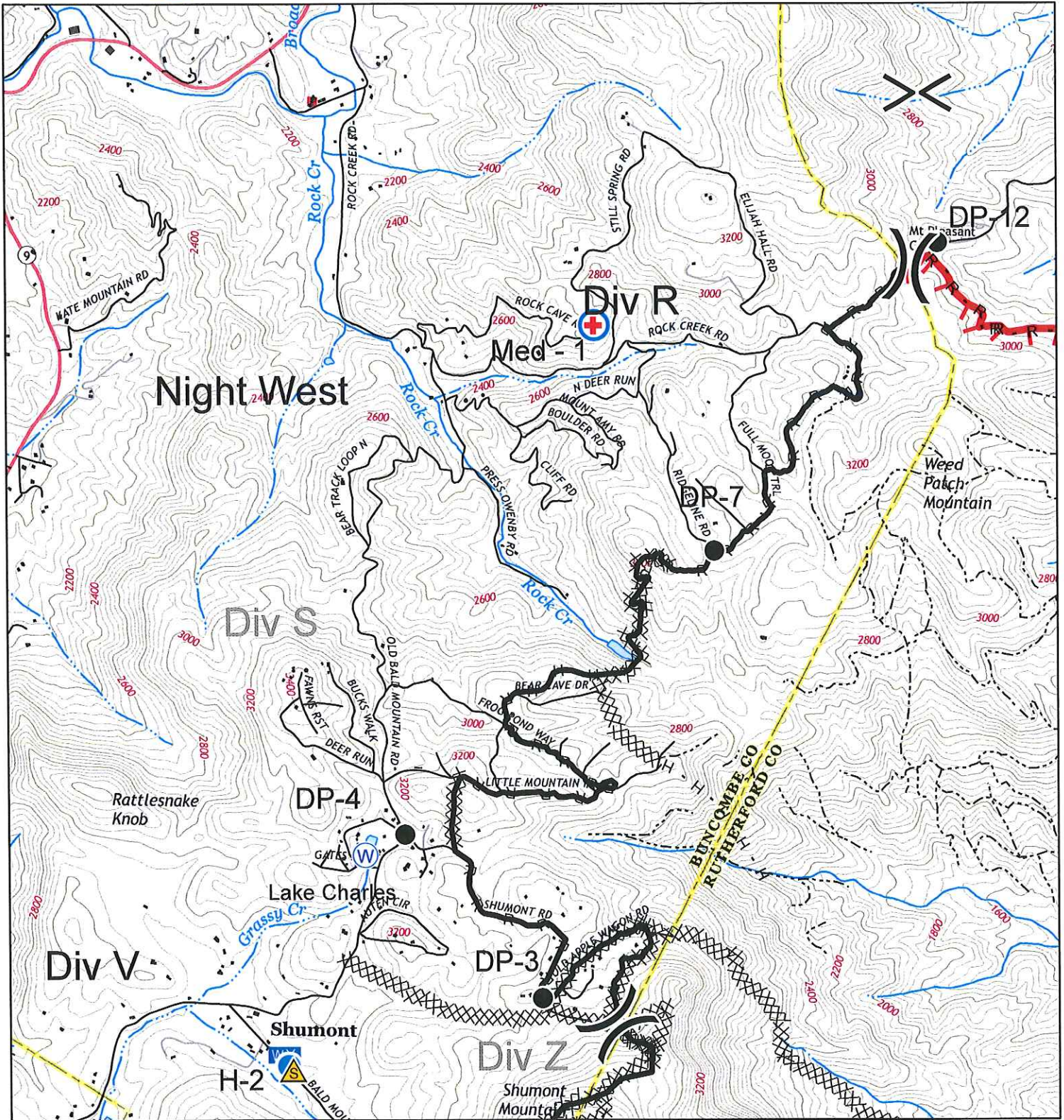


IAP Map

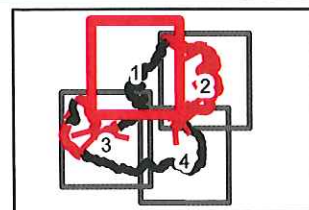
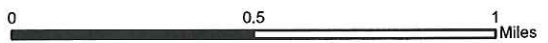
Party Rock Fire

NC-NCS-160031
Approximate Acreage: 7,171 acres

November 25, 2016



- Division
- Water Source
- Helispot
- MediVac Site
- Mobile Weather Unit
- Completed Dozer Line
- Road as Completed Line
- Hand Line
- Completed Line
- Uncontrolled Fire Edge
- Structures
- Local Roads
- Improved Rd
- Unimproved Rd
- Safety Zone
- Drop Point



Map Page
1

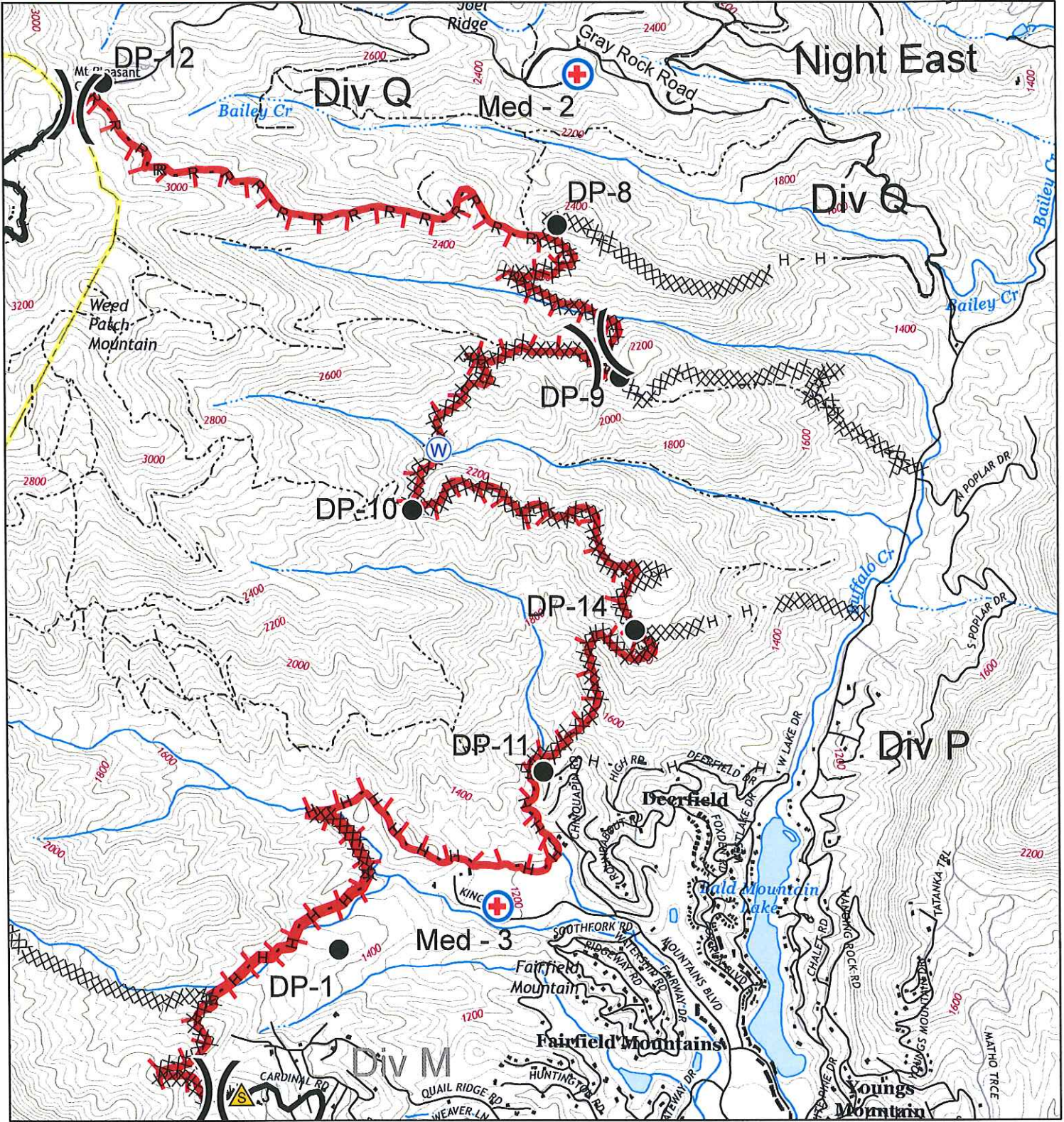
Map Datum: NAD83 Feet
11/24/2016
2152 hrs



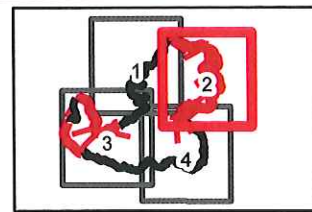
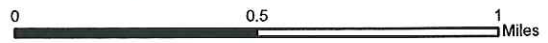
IAP Map Party Rock Fire

NC-NCS-160031
Approximate Acreage: 7,171 acres

November 25, 2016



- Division
- Water Source
- Completed Dozer Line
- Structures
- Safety Zone
- R - Road as Completed Line
- Local Roads
- MediVac Site
- Drop Point
- H - Hand Line
- Completed Line
- Uncontrolled Fire Edge
- Improved Rd
- Unimproved Rd



Map Page

2

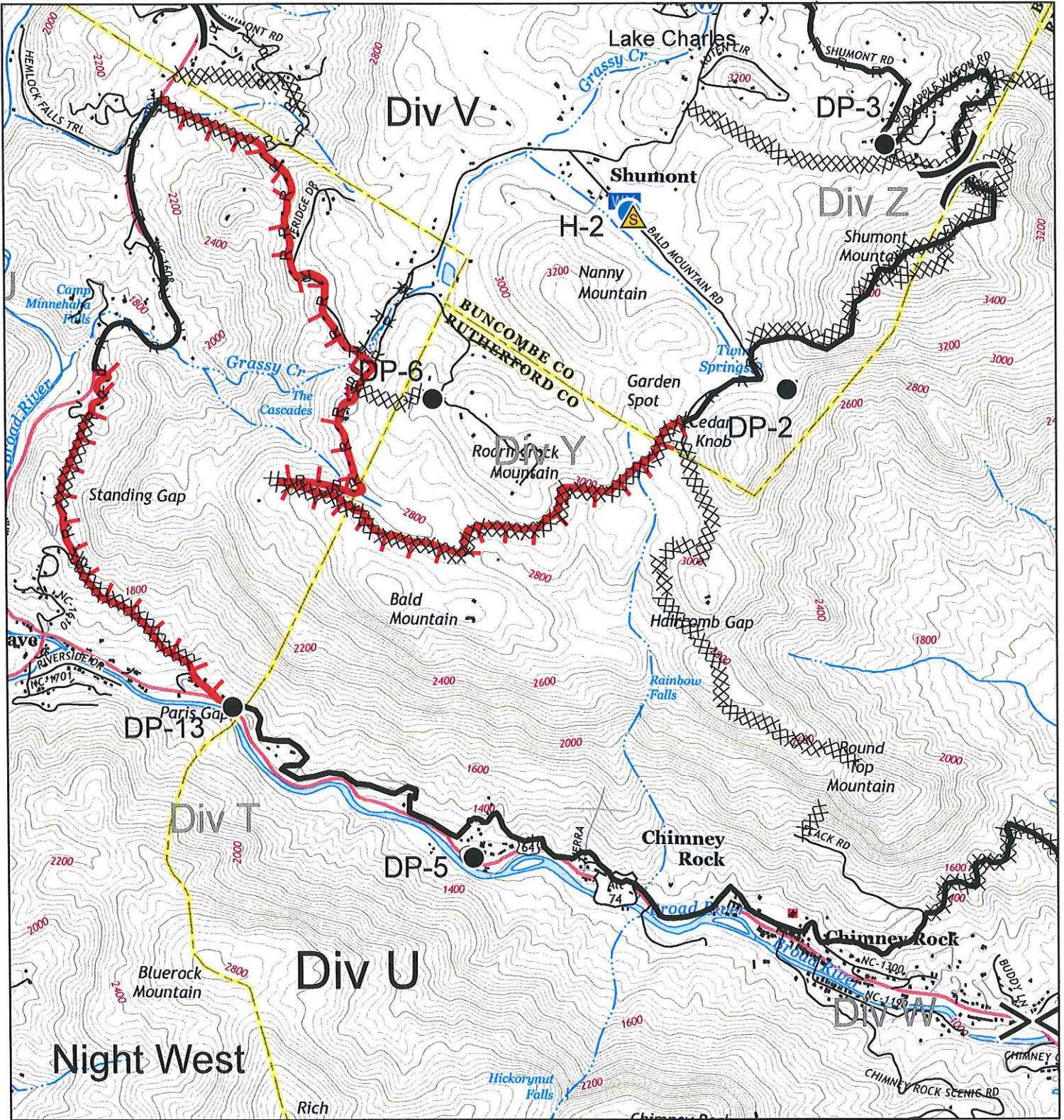
Map Datum: NAD83 Feet
11/24/2016
2159 hrs



IAP Map Party Rock Fire

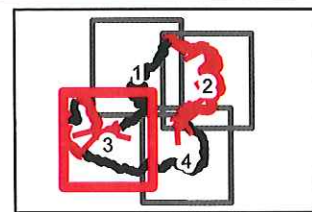
NC-NCS-160031
Approximate Acreage: 7,171 acres

November 25, 2016



- Division
- Helispot
- Safety Zone
- Drop Point
- Water Source
- Completed Dozer Line
- R - Road as Completed Line
- H - Hand Line
- Completed Line
- Uncontrolled Fire Edge
- Structures
- Local Roads
- Improved Rd
- Unimproved Rd

0 0.5 1 Miles



Map Page

3

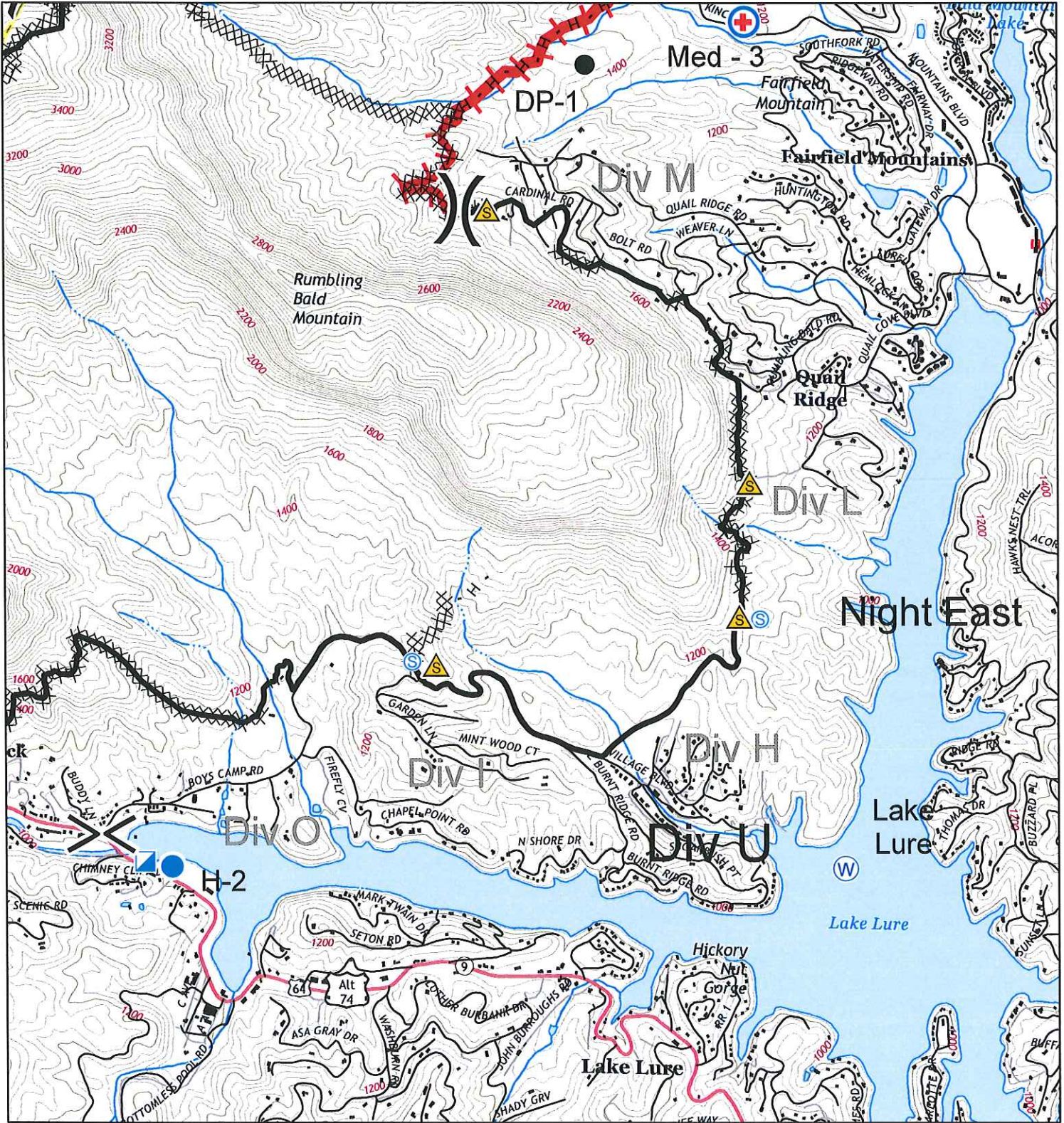
Map Datum: NAD83 Feet
11/24/2016
2157 hrs



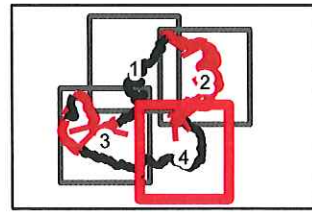
IAP Map Party Rock Fire

NC-NCS-160031
Approximate Acreage: 7,171 acres

November 25, 2016



- Division
- Hellsport
- Safety Zone
- MediVac Site
- Drop Point
- Incident Command Post
- Staging Area
- Completed Dozer Line
- Hand Line
- Completed Line
- Uncontrolled Fire Edge
- Structures
- Local Roads
- Improved Rd
- Unimproved Rd



Map Page 4

Map Datum: NAD83 Feet
11/24/2016
2153 hrs

LINE EMERGENCY:

Crew Supervisor is to contact DIVS w/ patient complaint/condition and location.

- **Division Supervisor contacts:**
 - Line EMT/Paramedic
 - Communications Unit

DIVS will run medical emergency on Command Channel Fox 1

***** Communication will Clear Command Channel for Emergency Traffic.**

Communications will contact:

- Medical Unit
- Safety
- Operations

Medical Unit will:

1. Assess Level of care needed.
2. Coordinate the appropriate resources.
3. Notify receiving hospital.

CAMP EMERGENCY: (Illness or Injury)

Contact Medical Unit with patient complaint/condition and location.

Medical Unit will:

- Respond to incident
- Contact:
 1. Communications
 2. Safety
 3. Logistics
 4. Operations
 5. Crew Supervisor

INJURY REPORTING PROCEDURES

CONTACT COMMO / DISPATCH

OF PATIENTS _____

REPORT NATURE OF INJURY/ MECHANISM OF INJURY.

NEED FOR ADDITIONAL RESOURCES
(Extrication, Equipment, Line Medics)

CONSCIOUS: YES ____ NO ____ (NO =MEDI-VAC)

BREATHING: YES ____ NO ____ (NO = MEDI-VAC)

“MEDI-VAC” = LIFE THREATENING EMERGENCIES ONLY

“GROUND MEDICAL TRANSPORT” = NON- LIFE THREATENING INJURIES/ILLNESS.

IDENTIFY POINT OF CONTACT

LOCATION OF PATIENT _____

TRANSPORTATION REQUESTED BY: AIR ____ GRD ____

RENDEZVOUS _____

POINT OF PICKUP _____

LAT _____ LONG _____

AGE _____ WEIGHT _____ MALE _____ FEMALE _____

PATIENT UNIT ID _____

IS AN EMT WITH PATIENT: YES ____ NO ____

****ALL EMERGENCIES --- Secure the area and identify witnesses for later investigation. Keep an accurate log of events.**

NOTES:

KEEP CALM