

Party Rock Fire

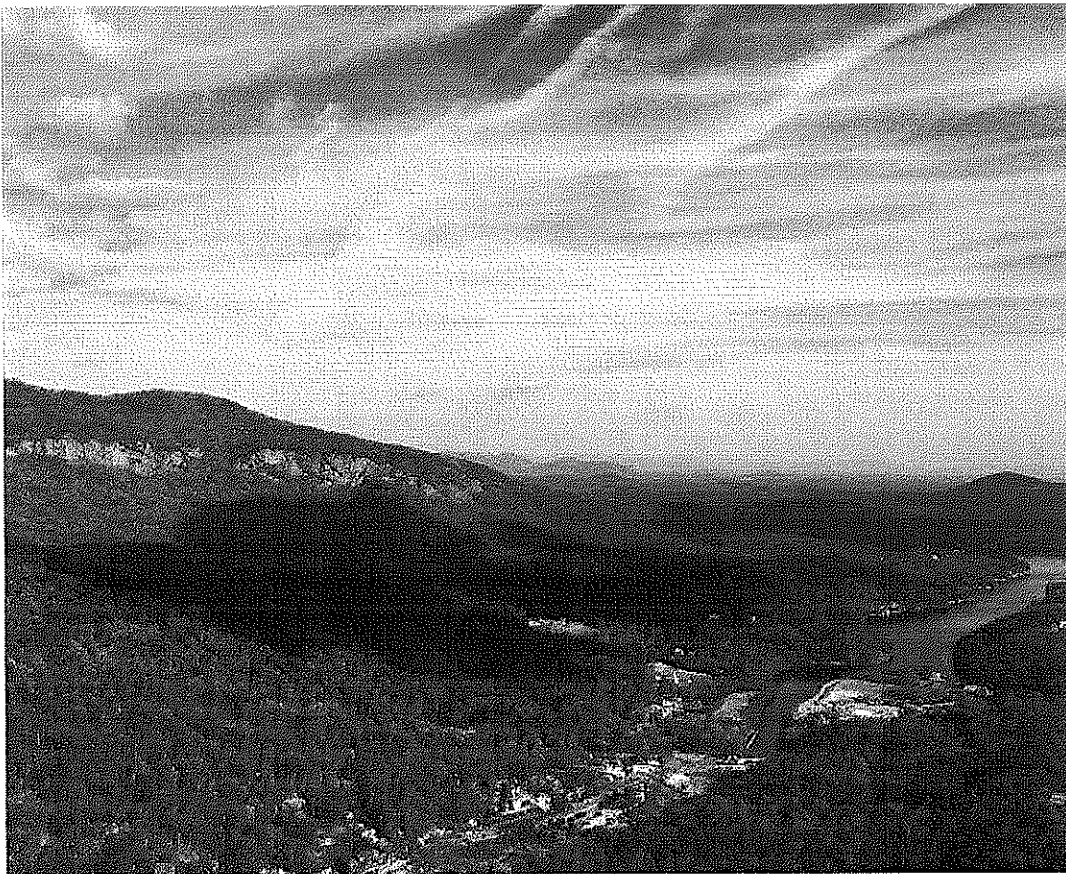
NC-NCS-160031


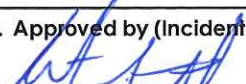
Incident Action Plan

Saturday, November 26, 2016

Day shift 0700 – 1900

Night shift 1900 – 0700



INCIDENT OBJECTIVES	1. Incident Name Party Rock Fire	2. Date 11/25/16	3. Time 2000
4. Operational Period: 11/26/16 Day 0700 -1900, Night 1900 – 0700			
5. General Control Objectives for the Incident (include alternatives) <u>Operational Objectives</u> 1. Provide for public and firefighter safety through establishment of LCES, adherence to the 10 standard fire orders / 18 watch out situations and maintaining direct and clear communications with all incident personnel, cooperators, and the general public. 2. Maintain fire in its current perimeter. 3. Keep the general public, local officials and stakeholders informed of fire status through situation updates and personal contacts. 4. Continue work to meet suppression repair standards. 5. Provide for accurate cost tracking and documentation through adherence to Incident Business Handbook procedures and NC Forest Service policy.			
6. Weather Forecast for Period - See Attached Weather Forecast			
7. General Safety Message - See Attached Safety Message			
8. Attachments (mark if attached)			
<input checked="" type="checkbox"/> Incident Objectives – ICS 202	<input checked="" type="checkbox"/> Weather Forecast	<input checked="" type="checkbox"/> Communications Plan - ICS 205	
<input checked="" type="checkbox"/> Organization List - ICS 203	<input checked="" type="checkbox"/> Fire Behavior Forecast	<input checked="" type="checkbox"/> Medical Plan - ICS 206	
<input checked="" type="checkbox"/> Div. Assignment Lists - ICS 204	<input checked="" type="checkbox"/> Incident Maps		
<input checked="" type="checkbox"/> Safety Message			
9. Prepared by (Planning Section Chief) 		9. Approved by (Incident Commander) 	

ORGANIZATION ASSIGNMENT LIST		9. Operations Section	
1. Incident Name: PARTY ROCK FIRE		Field Ops	John Flannigan
		Planning Ops	Bill Smith
2. Date Prepared 11/25/16	3. Time 1700	a. Day Operations	
4. Operational Period 11/26/16 0700-0700		Division/Group	P Adam Barnes
5. Command and General Staff		Division/Group	Q Matt Flock, Stuart Bedke (t)
Incident Commander	Link Smith	Division/Group	R Logan McCrae, Brian Reel
Deputy Incident Commander	Pat Skrip	Division/Group	U Jason Rayburn
Safety Officer	Ausland Kirk, Mark Atwood 11/28, Opie Blackwell 11/28	Division/Group	V Ed Wallmark
Safety Office Night	Michael Head 11/29	Suppression Repair Group John Pellissier	
Liaison Officer	Larry Goff, Richard McIntyre 11/29	b. Night Operations	
Information Officer	Tom Fields, Lyon 11/28, Storch 11/28, Schwarber 11/27, Truitt 12/01, Scherschel 12/01, Gosschalk 12/01	Night Operations	
		Division/Group	Night Neal Bond 11/26
6 Agency Representatives		Division/Group	
NC State Parks	Sean McElhone	Division/Group	
Lake Lure Fire Chief / EM Dir.	Ron Morgan	Division/Group	
NCEM W Branch Manager	Greg Atchley	Division/Group	
Rutherford Co. EM	Roger Hollifield	Division/Group	
Broad River Fire Chief	Brent Hayner	c. Night Operations	
Chimney Rock Fire Dept.	Chris Melton	Division/Group	
Buncombe Co. Liaison	Jerry Leatherwood	Division/Group	
Henderson Co. Asst. Fire Marshall	Jimmy Brissie	Division/Group	
NCFS District 1 Rep.	Alan Huskins	Division/Group	
Oregon Dept. of Forestry	Don Everingham	Division/Group	
NC Forest Service	Sean Brogan	d. Structure Protection	
7. Planning Section		Division/Group	
Chief	Mike Shaw	Division/Group	
Resources Unit	Colleen Kiser	Division/Group	
Status Check - In	Austin Harriett (t) 11/30	Division/Group	
Situation Unit	Joe Travers, Stuart Coombs (t) 12/02	f. Air Operations Branch	
GIS Specialist	Katie Morrison, Steven Walterscheld 11/28	Air Ops Branch Director	Scott Swearingen
Fire Behavior	Mike Haasken	Air Ops Branch Director	
Demobilization Unit	Rob Trickel 11/29	Helibase Manager	Don Thomas 11/30
Documentation Unit	Teri Parvin 12/5	Air Support Grp Supervisor	
8. Logistics Section		Air Tactical Grp Supervisor	Matt Hoehna
Chief	Malcolm Hiatt	10. Finance Section	
Service Branch Director	Dawn Sleight	Chief	Keith Dehut
Support Branch Director	Steve Wilson	INBA	Patsy Michel 12/04
Supply Unit	Joe Koch	Procurement Unit	
Ordering Manager	Melissa Hunter 12/01, James Gacey 11/27	Time Unit	Stacy Fulker, Sara Thompson 12/01
Receiving / Distribution	Edwin Lee (11/30)	PTRC	Judy Farley 11/29
Ground Support Unit	Jay Morey	EQTR	Daniel Blackburn 12/04
Equipment Manager	Randy Kearney, Mathew Vellinga 12/02	Cost Unit	Larry Black
Facilities Unit	Nate Sink 12/05	Compenstaion/ Claims Unit Leader	Rodger Waters 12/02
Food Unit	Vicki Delong, Les Hunter 11/28	Computer Spec	
Medical Unit	Linda Barbee 11/29, Natalia Hayes 11/27	Prepared by: <i>Colleen Kiser Rese</i>	
Communications Unit	Dick Ruble 11/29		
COMT			
RADO	James Russell-Stickley 11/29		



Fire Weather Forecast



FORECAST NO: 14
PREDICTION FOR: Day/Night Shift
SHIFT DATE: Saturday 11/26/2016
TIME AND DATE ISSUED: 11/25/2016 1600hrs

INCIDENT: Party Rock
UNIT: NC-NCSC
SIGNED: Dan Byrd
 Incident Meteorologist (IMET)

Discussion:

Cool high pressure will prevail over the fire on Saturday and Sunday with high temperatures around 60 degrees and RH's falling into the upper 20 percent range on Saturday, and into the lower 20 percent range on Sunday. Moisture will increase on Monday out ahead of a strong storm system that will bring showers to the area by Monday night. A strong storm system will move into the area on Tuesday with the possibility of heavy rainfall through Wednesday.

WEATHER FORECAST for Today:

SKY/WEATHER: Partly Cloudy.
Max Temperature: 56 to 60.
Min RH: 27 to 31 percent.
WINDS: -20 Foot-
 Northwest 6 to 9 mph.
Transport Winds: Northwest 10 mph.
Inversion Lifting between 10AM and 11AM
Chance of wetting rain: 0%
LAL: 1

Tonight:

SKY/WEATHER: Partly Cloudy.
Min Temperature: 29-33.
Max RH: 70-80%
WINDS: -20 Foot-
 North 3-5 mph..
Chance of wetting rain: 0%

Sunday:

SKY/WEATHER: Partly Cloudy.
Max Temperature: 59 to 63.
Min RH: 22 to 26 percent.
WINDS: -20 Foot-
 Southwest 5 to 8 mph.
Transport Winds: Southwest 10 mph.
Chance of wetting rain: 0%

EXTENDED FORECAST:

Monday...Partly becoming Mostly cloudy...Chance of showers late. 60-64. Min RH 29-33%. Winds SW 8-12.
 Tuesday...Cloudy with showers and Thunderstorms. 59-63. Min RH 50-55%. Winds S 10-15.
 Wednesday...Cloudy with showers and Thunderstorms. 59-63. Min RH 50-55%. Winds SW 10-15.

Fireline Observations 11/25: NC FIRE RAWS #4 2910'	Min T / Max T	Max RH / Min RH	Sunrise Sat	0709	Sunset	1712
	38 66	99 38%	Sunrise Sun	0710	Sunset	1712
Source: US Naval Observatory						

FIRE BEHAVIOR FORECAST

FORECAST NUMBER: 17	TYPE OF FIRE: Wildfire
FIRE NAME: Party Rock Fire	OPERATIONAL PERIOD: 11/26/2016 Day & Night
DATE ISSUED: 11/25/2016	TIME ISSUED: 1900
UNIT: Chimney Rock State Park, Private	Signed: Mike Haasken FBAN <i>Mike Haasken</i>

SATURDAY WEATHER SUMMARY:

Max Temp: 60° (-6) Min RH: 27% (-11) Winds (20'): NW 6-9 G15 mph morning Sky Cover: Partly Cloudy
CWR: 0% Mixing Height: 3,200' ADI (1-100): 60 good Fuel Shading: 20% Slope: 30%

FIRE BEHAVIOR

GENERAL: The predominant fuel types on the Party Rock Fire includes hardwood leaf litter (FM 9/TL6). Thick areas of tall (10-20') Rhododendron (Sh8) are also present and burn readily in the understory. Rhododendron has burned on slope runs after preheating during surface fire and also when ignition sources occur downslope. Flame lengths of 15-20 feet in the evening were observed in the Rhodo fuel type. There are pockets of overstory and shrub layers that were scorched by the initial surface fire and are brown and available for reburn. Leaf fall from the killed shrubs and timber has increased due to wind gusts from recent frontal passage creating reburn potential. Long term drying and high temperatures have created unseasonal dry fuel in larger fuel classes. Recent freezing weather has started curing of live herbaceous fuels like grasses.

Forecasted Indices: Based on Rutherford County RAWS

1 hour fuel moisture: 6% (-2); **10 hour fuel moisture:** 10% (+1); **100 hour fuel moisture:** 16% (+2)
Energy Release Component: 36 (-1); (90th percentile is 33, 97th percentile is 40)
Burning Index: 31 (-1) **Probability of Ignition:** 50% (+15) **KBDI:** 723 (+2)

Expected Fire Behavior: If fire gets established expect moderate rates of spread, large flame lengths and short range spotting. Potential is still there.

Timber Litter (FM9): 2' flame length and Rate of spread = 5 ch/hr. on a 30% slope
Shrub (Sh8): 10' flame length and Rate of spread = 20 ch/hr. on a 30% slope

Local Thresholds: (bold are present) Temp. over 60°, **20ft winds over 10 mph**, **RH below 30%** and 100hr fuel <15%

SPECIFIC:

- Continued leaf fall is covering control lines.
- Reburn may occur in leaf fall areas.
- Catching a fire directly will be difficult under these conditions.
- During active fire runs, indirect tactics may be needed.

AIR OPERATIONS

Should be clear air for good flying.

SAFETY

During mop up, watch for tree, stump and root tunnel burnout and ash pits.

"Capped Heat": This undesirable situation happens when water is sprayed on buried burning material without mixing it up with a hand tool. This is usually roots or thick duff and the hot spot can resurface after the "cap" dries back out.

ASSIGNMENT LIST		1. Branch	2. Division/Group				
			Papa				
3. Incident Name		4. Operational Period					
Party Rock Fire		Date: 11/26/16		Time: 0700 – 1900			
5. Operations Personnel							
Operations Chief	John Flannigan Bill Smith (Planning)		Division/Group Supervisor	Adam Barnes			
Branch Director			Air Operations Director	Scott Swearingen			
6. Resources Assigned This Period							
Strike Team/Task Force/ Resource Designator	Leader		Request #	No. Pers.	Last Work Day	Drop Off PT./Time	Pick Up PT./Time
Hand Crew – Pacific Oasis	Benjamin Dodds		C-200	20	11/30	0700	1900
ENG6 E-632 A358154	Gabriel Castanon		E-1023	4	11/30	0700	1900
ENG6 Sundance 603 CH19466	Mark Bonin		E-1028	3	11/30	0700	1900
Safety	Opie Blackwell		O-1025	1	11/28	0700	1900
Line Medic	Bryan Crawley		O-1063	1	11/30	1900	0700
7. Control Operations							
<ul style="list-style-type: none"> Monitor, patrol and maintain fireline. Mop-up 100' inside containment perimeter. Maintain situational awareness on snags and mitigate risks. Identify/report impacted areas and conduct suppression repair as appropriate. Extinguish hot spots identified by IR crew. 							
8. Special Instructions							
<ul style="list-style-type: none"> Clean up all flagging and trash along firelines. Repair suppression efforts if actions created a safety concern (blocked access roads and ATV trails, damaged gates, etc.) or environmental issues (sedimentation and erosion). 							
9. Division/Group Communication Summary							
Function	Frequency - RX	Frequency - TX	Tone	Channel			
Command RPT				EVENT FOX 1 Viper			
Tactical	151.3100	151.3100	136.5	INC. 3			
A/G Primary	171.5750	171.5750	131.8	INC. 8			
A/G Secondary	167.4250	167.4250	110.9	INC. 13			
Prepared by (Resource Unit Leader)		Approved by (Planning Section Chief)		Date	Time		
<i>Colleen Hise</i>		<i>Michael Ash</i>		November 25, 2016	2100		

ASSIGNMENT LIST		1. Branch	2. Division/Group				
			Quebec				
3. Incident Name		4. Operational Period					
Party Rock Fire		Date: 11/26/16		Time: 0700 – 1900			
5. Operations Personnel							
Operations Chief	John Flannigan Bill Smith (Planning)		Division/Group Supervisor	Matt Flock, Stuart Bedke (t)			
Branch Director			Air Operations Director	Scott Swearingen			
6. Resources Assigned This Period							
Strike Team/Task Force/ Resource Designator	Leader	Request #	No. Pers.	Last Work Day	Drop Off PT./Time	Pick Up PT./Time	
DOZ3 11x35 CatD5C	Jeremiah Greene O-1.37	E-143	1	11/27	0700	1900	
ENG6 B-912 G071HC	Jerry McGraw	E-1040	3	11/30	0700	1900	
ENG6 B-31 G098CY	Christopher Teter	E-1038	2	11/30	0700	1900	
DIVS (IR)	Mike White	O-1061.15	1	12/05	0700	1900	
Safety	Opie Blackwell	O-1025	1	11/28	0700	1900	
Line Medic – Drop Point 11	Terry Williamson	O-1065	1	12/3	0700	1900	
7. Control Operations							
<ul style="list-style-type: none"> Monitor, patrol and maintain fireline. Mop-up 100' inside containment perimeter. Maintain situational awareness on snags and mitigate risks. Identify/report impacted areas and conduct suppression repair as appropriate. Extinguish hot spots identified by IR crew 							
8. Special Instructions							
<ul style="list-style-type: none"> Clean up all flagging and trash along firelines. Repair suppression efforts if actions created a safety concern (blocked access roads and ATV trails, damaged gates, etc.) or environmental issues (sedimentation and erosion). 							
9. Division/Group Communication Summary							
Function	Frequency - RX	Frequency - TX	Tone	Channel			
Command RPT				EVENT FOX 1 Viper			
Tactical	151.4600	151.4600	136.5	INC. 2			
A/G Primary	171.5750	171.5750	131.8	INC. 8			
A/G Secondary	167.4250	167.4250	110.9	INC. 13			
Prepared by (Resource Unit Leader)	Approved by (Planning Section Chief)		Date	Time			
<i>Colleen Kiser</i>	<i>Michael Ash</i>		November 25, 2016	2100			

ASSIGNMENT LIST		1. Branch	2. Division/Group						
			Romeo						
3. Incident Name		4. Operational Period			Date: 11/25/16			Time: 0700 – 1900	
Party Rock Fire									
5. Operations Personnel									
Operations Chief		John Flannigan Bill Smith (Planning)		Division/Group Supervisor		Logan McCrae, Brian Reel			
Branch Director				Air Operations Director		Scott Swearingen			
6. Resources Assigned This Period									
Strike Team/Task Force/ Resource Designator		Leader		Request #	No. Pers.	Last Work Day	Drop Off PT./Time	Pick Up PT./Time	
ENG6 Brush-10 G94491		Christian Mee		E-1025	3	11/30	0700	1900	
ENG6 B-261 G021FP		Brian Logsdon		E-1046	3	11/29	0700	1900	
Safety		Opie Blackwell		O-1025	1	11/28	0700	1900	
7. Control Operations									
<ul style="list-style-type: none"> Monitor, patrol and maintain fireline. Mop-up 100' inside containment perimeter. Maintain situational awareness on snags and mitigate risks. Identify/report impacted areas and conduct suppression repair as appropriate. 									
8. Special Instructions									
<ul style="list-style-type: none"> Clean up all flagging and trash along firelines. Repair suppression efforts if actions created a safety concern (blocked access roads and ATV trails, damaged gates, etc.) or environmental issues (sedimentation and erosion). 									
9. Division/Group Communication Summary									
Function	Frequency - RX	Frequency - TX	Tone	Channel					
Command RPT				EVENT FOX 1 Viper					
Tactical	151.2650	151.2650	136.5	INC. 4					
A/G Primary	171.5750	171.5750	131.8	INC. 8					
A/G Secondary	167.4250	167.4250	110.9	INC. 13					
Prepared by (Resource Unit Leader)		Approved by (Planning Section Chief)			Date		Time		
<i>Colleen Kiser</i>		<i>Michael Ash</i>			November 24, 2016		2100		

ASSIGNMENT LIST		1. Branch		2. Division/Group		Uniform	
		3. Incident Name		4. Operational Period			
Party Rock Fire		Date: 11/26/16		Time: 0700 – 1900			
5. Operations Personnel							
Operations Chief	John Flannigan Bill Smith (Planning)		Division/Group Supervisor	Jason Rayburn			
Branch Director			Air Operations Director	Scott Swearingen			
6. Resources Assigned This Period							
Strike Team/Task Force/ Resource Designator	Leader	Request #	No. Pers.	Last Work Day	Drop Off PT./Time	Pick Up PT./Time	
ENG6 Chihuahua GGS170	Omar Gonzalez	E-1013	3	11/30	0700	1900	
ENG6 E-145 G387FW	Nade Galligan	E-1030	4	11/29	0700	1900	
ENG6 Carson E-641 A355483	Rene Arellano	E-1031	3	12/2	0700	1900	
Safety	Mike Head	O-1027	1	11/29	1900	0700	
Line Medic	Karl Larsen	O-1017	1	11/27	0700	1900	
7. Control Operations							
<ul style="list-style-type: none"> Monitor, patrol and maintain fireline. Mop-up 100' inside containment perimeter. Maintain situational awareness on snags and mitigate risks. Identify/report impacted areas and conduct suppression repair as appropriate. Begin Palm IR work. Support IR crews to locate and extinguish areas of heat. 							
8. Special Instructions							
<ul style="list-style-type: none"> Clean up all flagging and trash along firelines. Repair suppression efforts if actions created a safety concern (blocked access roads and ATV trails, damaged gates, etc.) or environmental issues (sedimentation and erosion). 							
9. Division/Group Communication Summary							
Function	Frequency - RX	Frequency - TX	Tone	Channel			
Command RPT				EVENT FOX 1 Viper			
Tactical	151.4600	151.4600	136.5	INC. 2			
A/G Primary	171.5750	171.5750	131.8	INC. 8			
A/G Secondary	167.4250	167.4250	110.9	INC. 13			
Prepared by (Resource Unit Leader)		Approved by (Planning Section Chief)		Date	Time		
Colleen Kiser		Michael H. Sh		November 25, 2016	2100		

ASSIGNMENT LIST		1. Branch	2. Division/Group			
			Victor			
3. Incident Name		4. Operational Period				
Party Rock Fire		Date: 11/26/16		Time: 0700 – 1900		
5. Operations Personnel						
Operations Chief	John Flannigan Bill Smith (Planning)	Division/Group Supervisor	Ed Wallmark			
Branch Director		Air Operations Director	Scott Swearingen			
6. Resources Assigned This Period						
Strike Team/Task Force/ Resource Designator	Leader	Request #	No. Pers.	Last Work Day	Drop Off PT./Time	Pick Up PT./Time
Hand Crew State Parks - Blue	Joseph Shimel	C-15	8	*	0700	1900
Hand Crew – State Parks – Red (w/ E-234)	Austin Paul	C-27	8	*	0700	1900
ENG6 AW16 492RMT	Rolf Kist	E-1012	2	11/30	0700	1900
ENG6 E-52 CG52364	Theodore Hebrard	E-1020	3	11/30	0700	1900
ENG6 B-11 G090CY	Andres Ojeda	E-1021	2	11/30	0700	1900
Safety	Mike Head	O-1027	1	11/29	0700	1900
Line Medic	Karl Larsen	O-1017	1	11/27	0700	1900
7. Control Operations						
<ul style="list-style-type: none"> Monitor, patrol and maintain fireline. Mop-up 100' inside containment perimeter. Maintain situational awareness on snags and mitigate risks. Identify/report impacted areas and conduct suppression repair as appropriate. Begin Palm IR work. Support IR crews to locate and extinguish areas of heat. 						
8. Special Instructions						
<ul style="list-style-type: none"> Clean up all flagging and trash along firelines. Repair suppression efforts if actions created a safety concern (blocked access roads and ATV trails, damaged gates, etc.) or environmental issues (sedimentation and erosion). *Switching crews out every 5 days. 						
9. Division/Group Communication Summary						
Function	Frequency - RX	Frequency - TX	Tone	Channel		
Command RPT				EVENT FOX 1 Viper		
Tactical	151.2800	151.2800	136.5	INC. 5		
A/G Primary	171.5750	171.5750	131.8	INC. 8		
A/G Secondary	167.4250	167.4250	110.9	INC. 13		
Prepared by (Resource Unit Leader)		Approved by (Planning Section Chief)		Date	Time	
<i>Colleen Kiser</i>		<i>Michael D. Shaw</i>		November 25, 2016	2100	

ASSIGNMENT LIST		1. Branch		2. Division/Group		
		Night				
3. Incident Name Party Rock Fire		4. Operational Period Date: 11/26/16 Time: 1900 - 0700				
5. Operations Personnel						
Operations Chief	John Flannigan	Division/Group Supervisor	Neal Bond			
		Air Operations Director				
6. Resources Assigned This Period						
Strike Team/Task Force/ Resource Designator	Leader	Request #	No. Pers.	Last Work Day	Drop Off PT./Time	Pick Up PT./Time
TFLD (t) (attached to E-1011)	Jim McCoy	E-1011.3	1	11/30	1900	0700
STEN	Kenneth DeWitt	O-1037	1	11/30	1900	0700
STEN (t)	Jeremy Kosak	O-1041	1	11/30	1900	0700
ENG6 E-611A367735	Brian Sullivan	E-1011	3	11/30	1900	0700
ENG6 E-11 930RSG	Larry Martinez	E-1017	3	11/30	1900	0700
ENG6 616 946TKA	Kory Bowser	E-1018	3	11/30	1900	0700
ENG6 E-316 G929FM	William Black	E-1033	3	11/30	1900	0700
ENG6 Guadalupe B-241 G517EX	Joseph Clement	E-1035	3	11/29	1900	0700
7. Control Operations						
<ul style="list-style-type: none"> Monitor, patrol and maintain fireline. Maintain situational awareness on snags and mitigate risks. 						
8. Special Instructions						
<ul style="list-style-type: none"> In the event of an emergency, night shift will call Night Ops who will contact Communications. Communications will contact MEDL and / or Safety. Clean up all flagging and trash along firelines. Repair suppression efforts if actions created a safety concern (blocked access roads and ATV trails, damaged gates, etc.) or environmental issues (sedimentation and erosion). 						
9. Division/Group Communication Summary						
Function	Frequency - RX	Frequency - TX	Tone	Channel	Division	
Command RPT				EVENT FOX 1 Viper		
Tactical	151.4600	151.4600	136.5	INC. 2	Night	
A/G Primary	171.5750	171.5750	131.8	INC. 8		
A/G Secondary	167.4250	167.4250	110.9	INC. 13		
Prepared by (Resource Unit Leader)	Approved by (Planning Section Chief)		Date	Time		
<i>Colleen Kiser</i>	<i>Michael At Shu</i>		November 25, 2016	2100		

INCIDENT RADIO COMMUNICATIONS PLAN				1. Incident Name PARTY ROCK FIRE		2. Date Time Prepared 11/25/2016		3. Operational Period Date 11/26/2016	
System	Chn./Talk grp.	Function	Frequency	Tone	Mode	Assignment	Remarks		
NCFS BK	INC. 2	TAC	RX: 151.4600	136.5	N	DAY: Divs Q & U			
			TX: 151.4600	136.5					
NCFS BK	INC. 3	TAC	RX: 151.3100	136.5	N	NIGHT: All Divisions			
			TX: 151.3100	136.5					
NCFS BK	INC. 4	TAC	RX: 151.2650	136.5	N	DAY: Div. R			
			TX: 151.2650	136.5					
NCFS BK	INC. 5	TAC	RX: 151.2800	136.5	N	DAY: Divs V			
			TX: 151.2800	136.5					
NCFS BK	INC 8	AIR TO GROUND PRIMARY	RX: 171.5750	131.8	N	OPERATIONS			NCFS AIR-TO-GROUND
			TX: 171.5750	131.8					
NCFS BK	INC 13	AIR TO GROUND SECONDARY	RX: 167.4250	none	N	OPERATIONS			U.S. AIR-TO-GROUND
			TX: 167.4250	110.9					
VIPER	EVENT FOX 1	COMMAND	RX: _____			OPERATIONS / COMMUNICATIONS			
VIPER	EVENT FOX 2	VIPER UTILITY	RX: _____			TO BE ASSIGNED BY COMM			AS NEEDED
VIPER	EVENT FOX 3	LOGISTICS	RX: _____			LOGISTICS			
VIPER	EVENT FOX 4	OPERATIONS	RX: _____			TO BE ASSIGNED BY OPS			AS NEEDED
VIPER	EVENT ECHO 2	OPERATIONS	RX: _____			RUTHERFORD COUNTY			STRUCTURE PROTECTION
NCFS	NCFS CALL	TAC	RX: 172.2750	131.8	N	TRAVEL			Use When Traveling
			TX: 172.2750	131.8					
NCFS	INC 15	AIR GUARD	RX: 168.6250	none	N	AIR GUARD			EMERGENCY CONTACT WITH AIRCRAFT
			TX: 168.6250	110.9					
5. Prepared by (Communications Unit)									
Dick Ruble / COMIL									
COMMUNICATIONS MONITORS COMMAND FOXTROT 1									
PARTY ROCK COMMUNICATIONS PHONE # 224-325-7100									

AIR OPERATIONS SUMMARY 220		Prepared By: Scott Swearingen	Prepared: 11/25/2016	Prepared Time: 1730 hrs.
1. INCIDENT NAME: Party Rock		2. OPERATIONAL PERIOD 11/26/2016	START TIME: 0800	END TIME: 1730
		SUNRISE: 0715	SUNSET: 1717	

<p>3. REMARKS (Safety Notes, Hazards, Air Operations Special Equipment, etc.). AVIATION SAFETY IS A TEAM EFFORT</p> <p style="text-align: center;">AIR OPERATIONS INTENT</p> <p>ALL MISSIONS WILL BE ANALYZED IN TERMS OF HAZARDS AND RISKS</p> <ul style="list-style-type: none"> • THE RISK ASSESSMENT IS AN OPEN PROCESS WELCOMING INPUT. • HAZARDS WILL BE MITIGATED, RISK WILL BE REDUCED. • RISK MANAGEMENT PROCESS WILL BE DOCUMENTED AND DISPLAYED. <p style="text-align: center;">IF A MISSION FEELS UNSAFE, IDENTIFY SAFE ALTERNATIVES!</p>	<p>4. READY ALERT AIRCRAFT:</p> <p>Medevac Aircraft: MAMA = Mountain Area Medical Airlift See Medical Plan Order through Communications</p> <p>Extraction: North Carolina N.G. @ Macon Co. Airport UH-60 w/hoist+EMT Short Haul T3 heli @ TOC airport in Georgia</p>
<p>5. TFR: 6/8360</p> <p>Altitude: 8000 Feet MSL Frequency: 126.250 Center Point Lat: N 35° 27.00' Long: W 82° 14.56'</p> <p>Report aircraft intrusions immediately to Air Attack, Helibase or Air Ops.</p>	

6. PERSONNEL	NAME	PHONE #	7. FREQUENCIES	AM	FM	8. FIXED-WING Avail/ Type/ Make-Model/ N#/ Base
AOBD	Scott Swearingen	541-580-7485	TFR Primary	126.250		AIRTANKERS: Order thru ATGS to Asheville Dispatch.
ATGS	Matt Hoehna	541-969-8461	Secondary Victor	123.125		ATGS Platform – 9AC AS350
HEB2	Don Thomas	970-382-1837	Primary Air/Ground (NFCS A/G)		171.5750 b/rx tone 131.8	Aircraft Costs e-mail: larry.black@oregon.gov
			Secondary Air/Ground (USFS A/G)		167.4250 Tx tone 110.9	
Party Rock Helibase	Johnson Field @ Hendersonville Airport	35°18.378' N 82°26.030' W	DECK		163.100	Dispatch: R-3 Asheville 828-665-8688
			Air Guard		168.6250 (110.9 TX)	

9. HELICOPTERS (Use Additional Sheets as Necessary)

FAA N#	TY	MAKE/ MODEL	BASE	AVAIL	START	REMARKS	FAA N#	TY	MAKE/ MODEL	BASE	AVAIL	START	REMARKS
9AC	3	AS-350	Party Rock Helibase	0800	0700	AA/Recon/PSD/IA A-30							

DIP SITES – Lake Lure N 35° 26.17' x W 82° 11.83' Lake Charles N 35° 28.73' x W 82° 15.23'
HELISPOTS — H-2: N 35° 28.195' x W 82° 15.449' H-3: N 35° 25.277' x W 82° 11.854'

HEALTH AND SAFETY MESSAGE

Safety First, Safety Last Always Safe

EVERYONE GOES HOME!

INCIDENT: Party Rock

DATE: 11-26-16

Oper. Period: Day/Night

Major Hazards and Risks:

- **Public Travel**
- **Drive slower don't cut corners**
- **Steep Slopes – Rolling Debris & Footing**
- **Snags & burned out roots on live trees-Look up**
- **Slips, trips and falls**
- **Heavy Equipment**

Fire Order of the Day – *Know where your crew members are working!*

Narrative:

- Have clear contact and communications with all air resources within your area.
- Make sure you are in good communication with all resources and with ICP.
- If you're in a new area to you ensure Escape Routes & Safety Zones are known.
- Don't step into hot roots systems around burned out stumps.
- Make sure LCES is in placed at all times.
- Say Hydrated – even at night: 2 Waters to 1 Gatorade. Clean coolers with bleach solution daily.

Watch Out Situation of the Day



HEALTH AND SAFETY IN THE WORKPLACE

You never know when you might need it.

leenks.com

SNAG GUIDELINES

- Identify snags, hazard trees and unstable rocks (Look up, look down, look around).
- Identify kill zone and inform others – 2 ½ tree length. (Flag, describe or post lookouts to keep others out). Consider wind and weather.
- Felling of snags and hazard trees will precede line construction and mop-up.
- Felling by **QUALIFIED FALLERS ONLY**.
- Secure, eliminate or avoid unstable material on slopes.
- Remember logs can/do roll, spin, slide & shift.
- Do not work below dozers or other firefighters.
- Rocks can/do roll, slide & bounce
- No class B/C felling after dark.
- Establish drop points, rest areas, sleeping and parking areas free of snags.

Eyes and ears open to noise or movement – it could signal immediate danger. Face your danger to decide escape.

Incident Safety Officer: Kirk Ausland

**Smith Type 1 IMT
LCES Analysis of Tactical Actions**

Incident Name:	Date and Time Prepared:		Operational Period:						
	11/24/16	1405	11/25/16-11/26/16	Day (0700 - 1900) Night (1900 - 0700)					
TACTICAL HAZARDS	Divisions/Groups								Mitigations
	P	Q	R	U	V	Night E	Night W	Camp	
Underslung Fireline	X		X	X	X	X	X		Monitor (look outs, patrols) lines to ensure fire doesn't cross. Position remaining fuels to prevent roll out. Identify escape routes and nearest safety zones.
Mid-Slope Fireline	X		X	X	X	X	X		Monitor (look outs, patrols) lines. Position fuels to prevent roll out. Identify escape routes and nearest safety zones.
Extreme Conditions (Fuels)	X	X	X	X	X	X	X		Prevent embers from becoming established through pretreating (water, retardant) unburned fuels near control lines.
Unburned Area / Reburn Potential	X	X	X	X	X	X	X		Monitor burned area and control lines to ensure leaves don't accumulate.
Hazard Trees	X	X	X	X	X	X	X		IRPG Pg. 79. Identify and flag hazard trees. Look Up, Down and Around.
Steep Terrain (footing, rocks)	X	X	X	X	X	X	X		Watch footing and maintain spacing. Be aware and notify others of rolling material.
Transportation	X	X	X	X	X	X	X		Reduce speeds, Drive defensively. Park vehicles for egress (back in), use spotters. Follow traffic plans. Use seatbelts, headlights, & keep windsheilds clean.
Communications	X	X	X	X	X	X	X		Ensure radio is cloned with the current communications plan and scan appropriate channels. Test prior to engaging fire, check during operational period.
Structure Protection	X	X	X	X	X	X	X		If structural resources are needed they can be reached on ECHO 2 (Viper radio channel 2) Notify communications first.
Air Operations (multiple aircraft, line support)	X	X	X	X	X	X	X		Monitor air to ground. Flight follow through Incident Air Attack. Keep drop areas clear of personnel. IRPG pg 44.
Mechanical Equipment	X	X	X	X	X	X	X		Use PPE, ensure all safety devices are functional. Establish eye contact with operator before approaching equipment. Maintain proper spacing from equipment working in the area.
Wildlife	X	X	X	X	X	X	X		Avoid disposing of uneaten food on the line and use trash cans in camp.
Parking							X		Follow traffic patterns. Use spotters when backing. Watch for individuals on foot.
Lighting (Low)							X		Carry a flashlight and avoid dark areas.
Food area							X		Watch for tripping hazards and other people. Wash hands prior to eating.
Prepared: 11/24/16	Safety Officers: Kirk Ausland (SOF1)								

MEDICAL PLAN (ICS 206 WF)

1. Incident/Project Name		2. Operational Period					
Party Rock Fire		11/26/2016					
3. Ambulance Services							
Name	Complete Address	Phone & EMS Frequency	Advanced Life Support (ALS) Yes No				
Buncombe County EMS	164 Erwin Hills Rd. Ashville, NC. 28806	Commo Fox 1 (828) 250-6650	X				
Rutherford County EMS	140 Bills Creek Rd. Lake Lure, NC. 28746	Commo Fox 1 911	X				
Henderson County EMS	820 N. Justice St. Henderson, NC. 28791	Commo Fox 1 (828) 687-4912	X				
4. Air Ambulance Services							
Name	Phone	Type of Aircraft & Capability					
(MAMA) Mountain Area Medical Airlift	Commo Fox 1	ALS / Night Capable					
HART / SHORT HAUL SHIP	Commo Fox 1	BLS / Night capable					
5. Hospitals							
Name Complete Address	GPS Datum – WGS 84 Coordinate Standard Degrees Decimal Minutes DD° MM.MMM' N - Lat DD° MM.MMM' W - Long		Travel Time Air Gnd	Phone	Helipad Yes No		Level of Care Facility
	Lat:	35 19.251'			30 min.	(828) 696-1000	
Pardee Hospital Henderson, NC.	Long:	82 28.065'					
Mission Hospital Ashville, NC.	Lat:	35 34.595'	8 min	(828) 213-1111	X		Level 2 Trauma Center
	Long:	82 32.952'	40 min.				
Rutherford Reg Med Ctr Rutherfordton, NC.	Lat:	33 28.978'	1hr	(828) 286-5000	X		Level 2, NO Trauma
	Long:	82 5.408'	3hr				
Joseph M. Still Burn Centr Augusta, Ga	Lat:	33 29.158'	1hr	(706) 651-6661	X		Burn Center
	Long:	82 5.681'	3hr				
LINE EMERGENCY: Crew Supervisor is to contact DIVS w/ patient complaint/condition and location. <ul style="list-style-type: none"> Division Supervisor contacts: <ul style="list-style-type: none"> Line EMT/Paramedic Communications Unit DIVS will run medical emergency on Command Channel Fox 1 *** Communication will Clear Command Channel for Emergency Traffic. Communications will contact: <ul style="list-style-type: none"> Medical Unit Safety Operations Medical Unit will: <ol style="list-style-type: none"> Assess Level of care needed. Coordinate the appropriate resources. Notify receiving hospital. 				INJURY REPORTING PROCEDURES NATURE OF INJURY _____ #Pts _____ LOCATION OF PATIENT _____ SPECIAL RESCUE/EXTRICATION NEEDS _____ TRANSPORTATION REQUESTED BY: AIR _____ GRD _____ "MEDI-VAC" = LIFE THREATENING EMERGENCIES ONLY "GROUND MEDICAL TRANSPORT" = NON-LIFETHREATENING INJURIES/ILLNESS. RONDEZVOUS _____ POINT OF PICKUP _____ LAT _____ LONG _____ PATIENT UNIT ID _____ IS A EMT WITH PATIENT: YES _____ NO _____ AGE _____ SEX: MALE _____ FEMALE _____ ALL EMERGENCIES --- Secure the area and identify witnesses for later investigation. Keep an accurate log of events. NOTES: _____ <p style="text-align: right;">*KEEP CALM*</p>			
ICS 206 8-78		9. PREPARED BY (MEDICAL UNIT LEADER) 		10. REVIEWED BY (SAFETY OFFICER) 			

Meal Times

➤ **Breakfast: 0600 – 0830**

Day Shift pick up bag lunches at breakfast.

➤ **Dinner: 1800 – 2000**

Night Shift pick up bag meals at dinner.

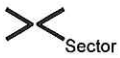
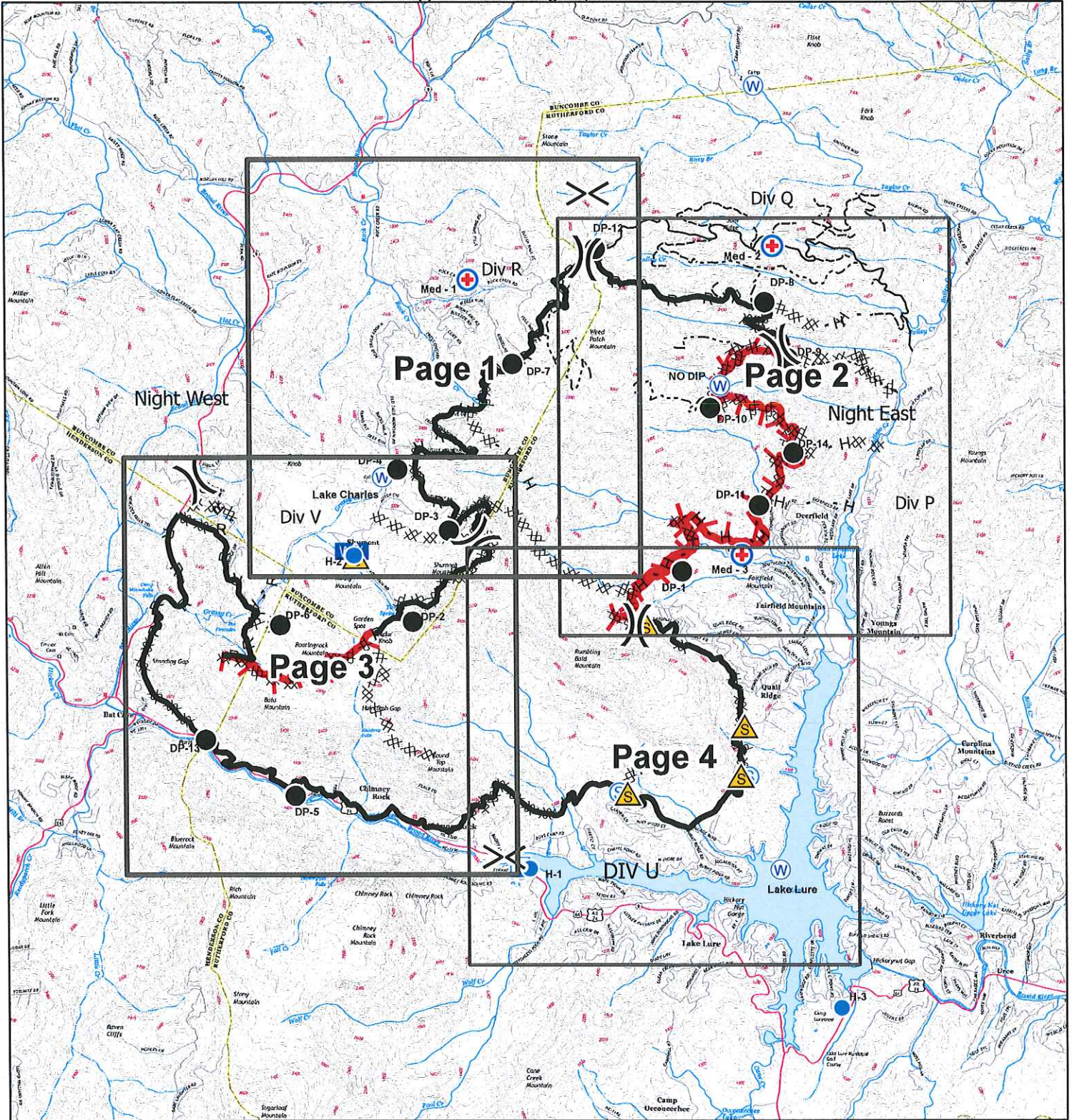


IAP Index Map Party Rock Fire

November 26, 2016

NC-NCS-160031

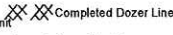
Approximate Acreage: 7,171 acres



Water Source



Mobile Weather Unit



Completed Dozer Line



Division



Drop Point



Safety Zone



Hand Line



Helispot



Staging Area



Road as Completed Line



MediVac Site



Incident Command Post



Uncontrolled Fire Edge



Local Roads



Improved Rd



Unimproved Rd



Perimeters shown are based on the best available information at the time of map production.
Latest Intel: 20161122 @ 1600



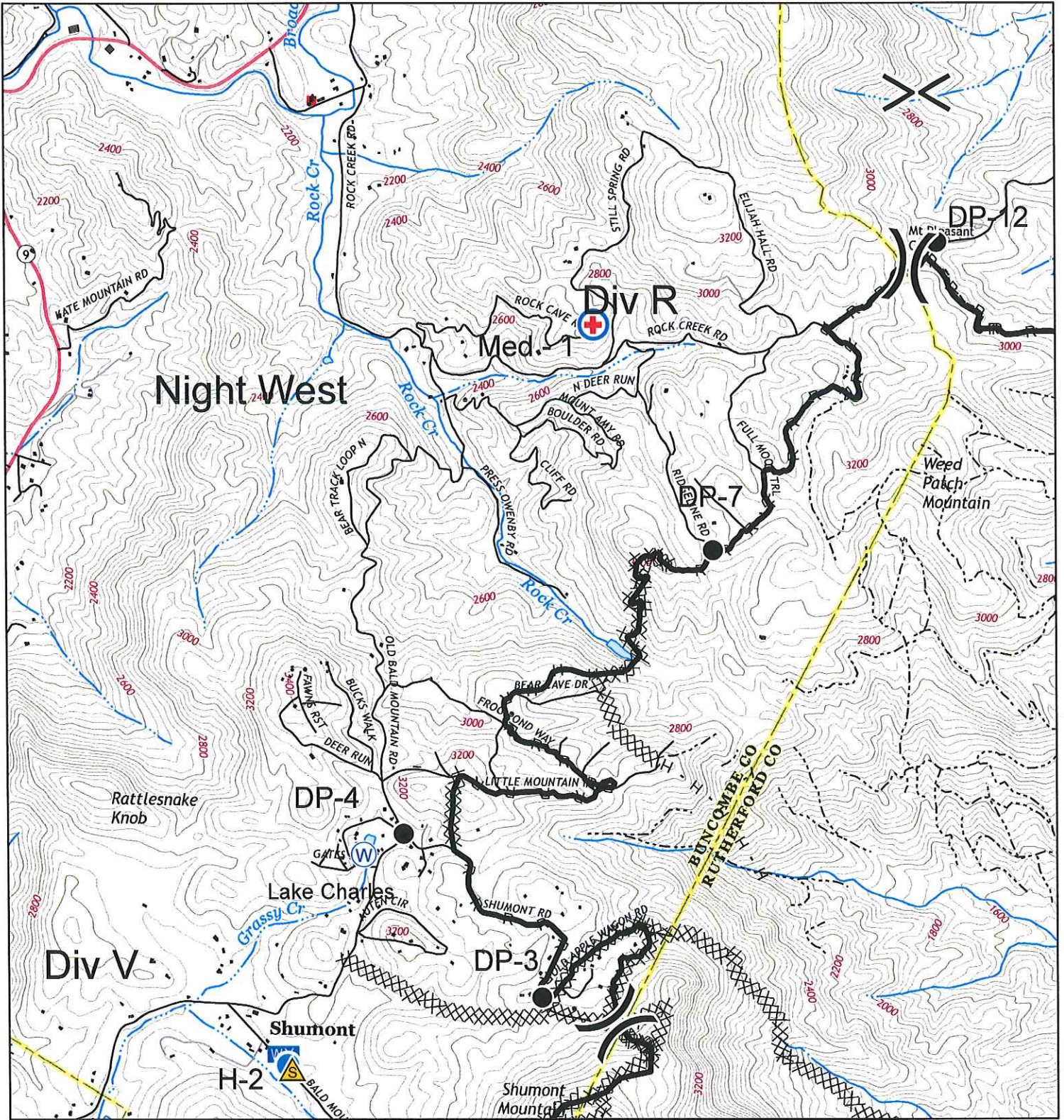
Map Datum: NAD83 Feet
11/25/2016
2039 hrs



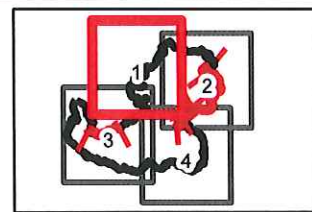
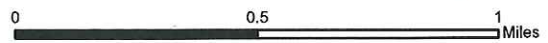
IAP Map Party Rock Fire

NC-NCS-160031
Approximate Acreage: 7,171 acres

November 26, 2016



- Division
- Water Source
- Helispot
- MediVac Site
- Safety Zone
- Mobile Weather Unit
- Completed Dozer Line
- R - Road as Completed Line
- H - Hand Line
- Completed Line
- Structures
- Local Roads
- Improved Rd
- Unimproved Rd



Map Page

1

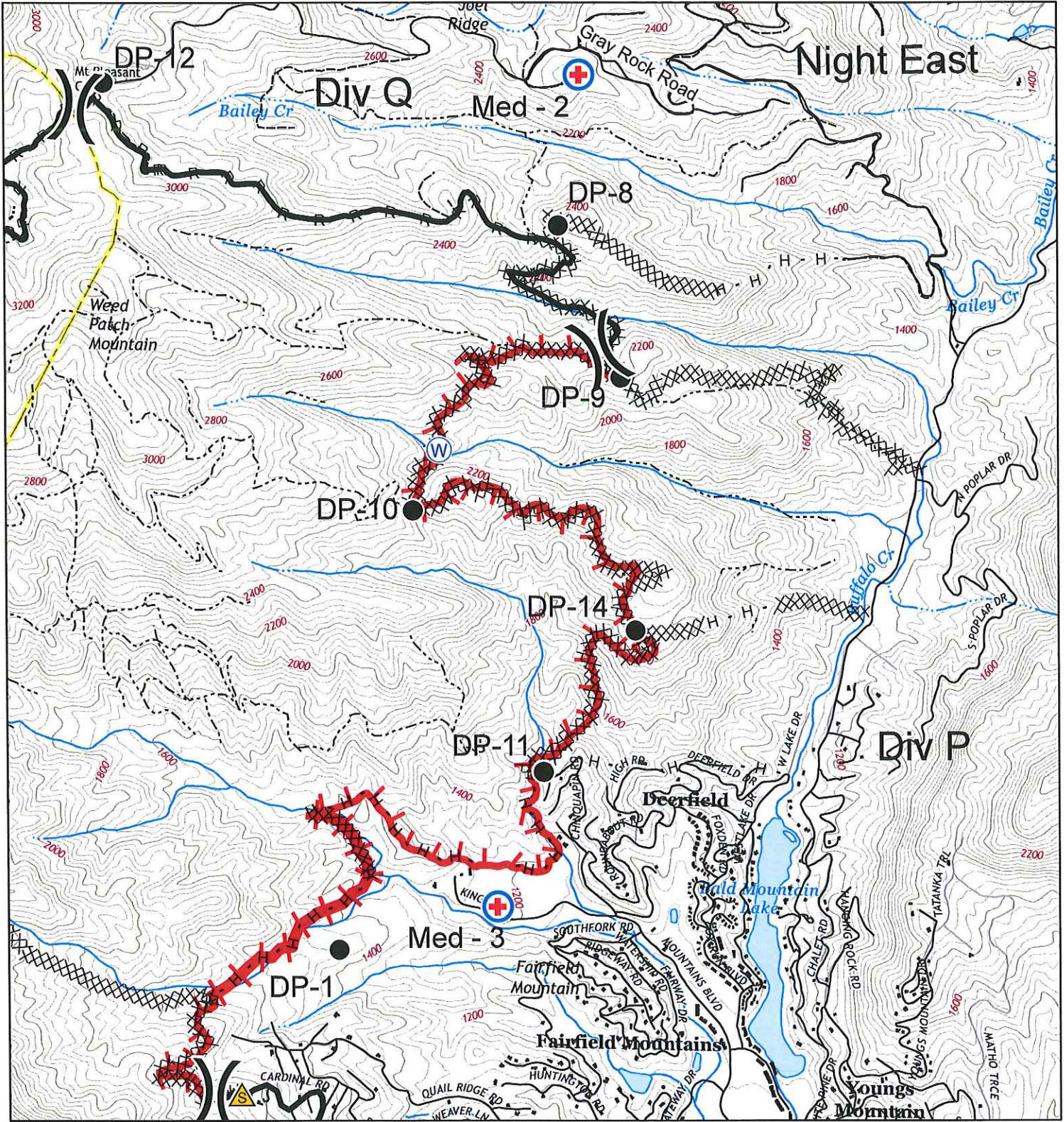
Map Datum: NAD83 Feet
11/25/2016
2051 hrs



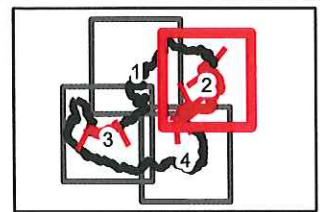
IAP Map Party Rock Fire

NC-NCS-160031
Approximate Acreage: 7,171 acres

November 26, 2016



- Division
- Water Source
- Safety Zone
- MediVac Site
- Drop Point
- Completed Line
- Uncontrolled Fire Edge
- Completed Dozer Line
- Road as Completed Line
- Hand Line
- Structures
- Local Roads
- Improved Rd
- Unimproved Rd



Map Page 2

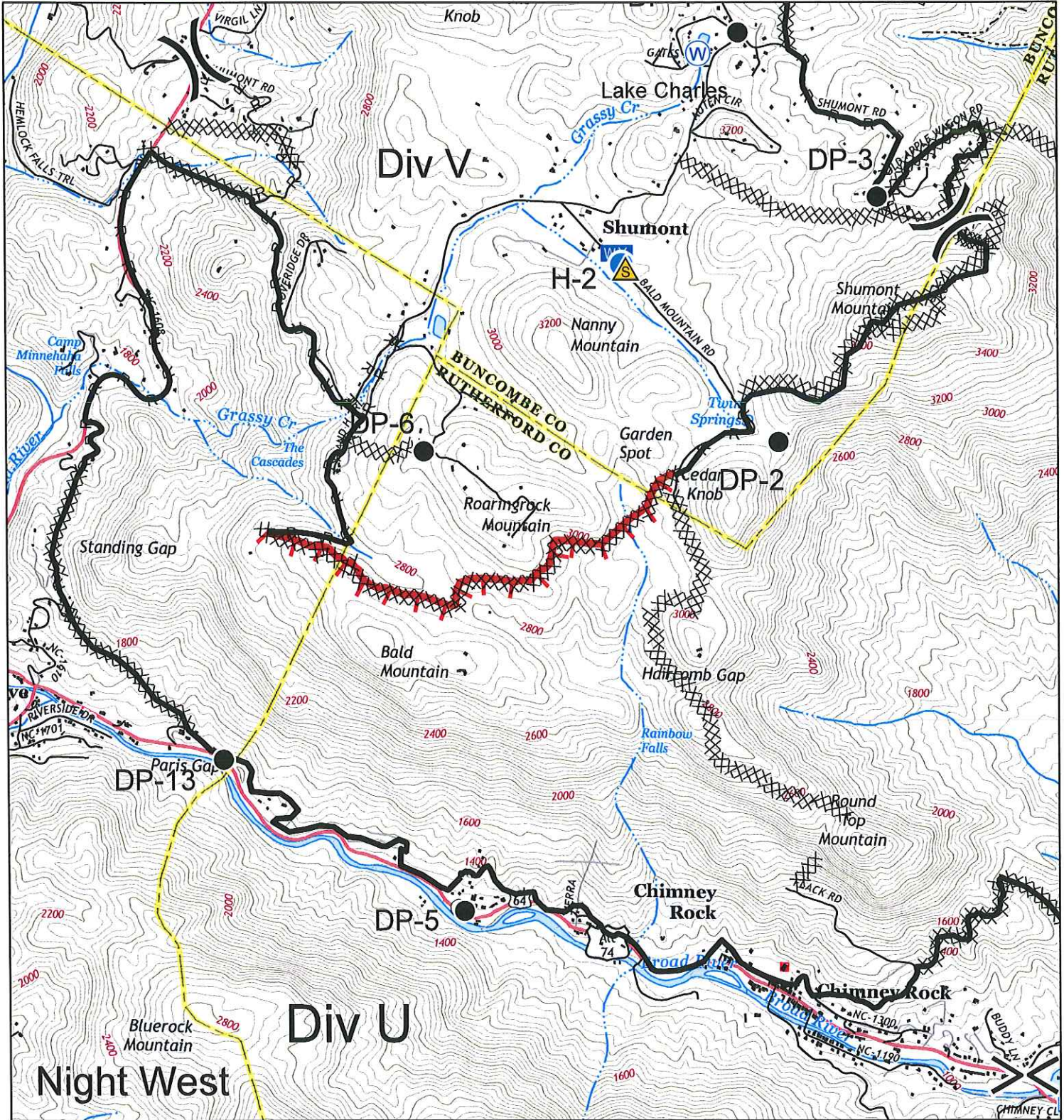
Map Datum: NAD83 Feet
11/25/2016
2051 hrs



IAP Map Party Rock Fire

NC-NCS-160031
Approximate Acreage: 7,171 acres

November 26, 2016



Division



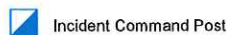
Helispot



Safety Zone



Drop Point



Incident Command Post



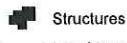
Completed Dozer Line

R - Road as Completed Line

H - Hand Line

Completed Line

Uncontrolled Fire Edge



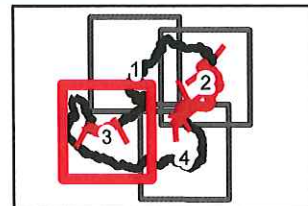
Structures

Local Roads

Improved Rd

Unimproved Rd

0 0.5 1 Miles



Map Page 3

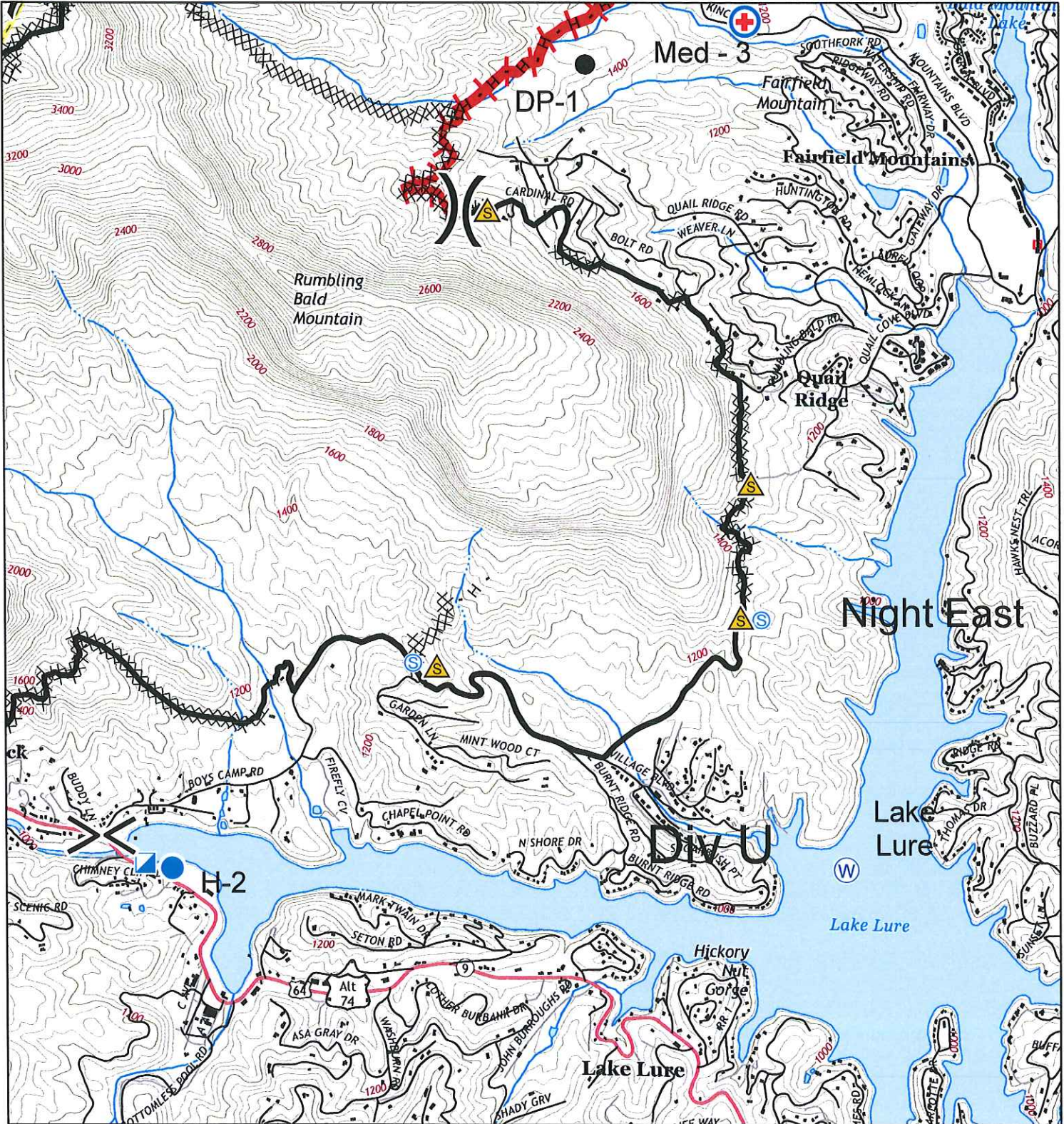
Map Datum: NAD83 Feet
11/25/2016
2052 hrs



IAP Map Party Rock Fire

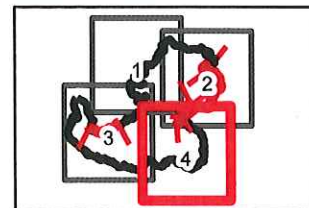
NC-NCS-160031
Approximate Acreage: 7,171 acres

November 26, 2016



- Division
- Helispot
- Safety Zone
- MediVac Site
- Drop Point
- Water Source
- Staging Area
- Completed Dozer Line
- Hand Line
- Completed Line
- Uncontrolled Fire Edge
- Structures
- Local Roads
- Improved Rd
- Unimproved Rd

0 0.5 1 Miles



Map Page 4

Map Datum: NAD83 Feet
11/25/2016
2052 hrs

11/26/2016

TENTATIVE RELEASE

PARTY ROCK US-NC-NCS-160031

CREWS

C-202 0700 (HC2I) HC2I IDAHO PANHANDLE IDS#2

EQUIPMENT

E-2 0000 (DOZ3) DOZ3 5X97 PJ7513
E-1024 0000 (ENG6) ENG6 B-405 G111EL
E-1048 0000 (ENG6) ENG6 B-192 G097DN
E-1049 0000 (ENG6) ENG6 B-9802 G170DT
E-1041 0700 (ENG6) ENG6 CSP-621 G862GF

OVERHEAD

O-1031 0000 (STEN) STOUT, JAMES
O-1045 0800 (EMTB) BRUMLEY, DOUGLAS
O-1015 0800 (EMTF) CARSON, MILLIE
O-1.11 1200 (PSC2) BROGAN, SEAN
O-1061.30 1600 (AREP) EVERINGHAM, DONALD
O-1004 1700 (DIVS) DOWNS, DOUGLAS
O-50 1900 (PIOF) GOSSCHALK, JACOB
O-49 1900 (PIOF) SCHERSCHEL, LOGAN

**This
page
intentionally
left
blank.**

LINE EMERGENCY:

Crew Supervisor is to contact DIVS w/ patient complaint/condition and location.

- **Division Supervisor contacts:**
 - Line EMT/Paramedic
 - Communications Unit

DIVS will run medical emergency on Command Channel Fox 1

***** Communication will Clear Command Channel for Emergency Traffic.**

Communications will contact:

- Medical Unit
- Safety
- Operations

Medical Unit will:

1. Assess Level of care needed.
2. Coordinate the appropriate resources.
3. Notify receiving hospital.

CAMP EMERGENCY: (Illness or Injury)

Contact Medical Unit with patient complaint/condition and location.

Medical Unit will:

- Respond to incident
- Contact:
 1. Communications
 2. Safety
 3. Logistics
 4. Operations
 5. Crew Supervisor

INJURY REPORTING PROCEDURES

CONTACT COMMO / DISPATCH

OF PATIENTS _____

REPORT NATURE OF INJURY/ MECHANISM OF INJURY.

NEED FOR ADDITIONAL RESOURCES
(Extrication, Equipment, Line Medics)

CONSCIOUS: YES ___ NO ___ (NO =MEDI-VAC)

BREATHING: YES ___ NO ___ (NO = MEDI-VAC)

“MEDI-VAC” = LIFE THREATENING EMERGENCIES ONLY

“GROUND MEDICAL TRANSPORT” = NON- LIFE THREATENING INJURIES/ILLNESS.

IDENTIFY POINT OF CONTACT

LOCATION OF PATIENT _____

TRANSPORTATION REQUESTED BY: AIR ___ GRD ___

RENDEZVOUS _____

POINT OF PICKUP _____

LAT _____ LONG _____

AGE _____ WEIGHT _____ MALE _____ FEMALE _____

PATIENT UNIT ID _____

IS AN EMT WITH PATIENT: YES ___ NO ___

****ALL EMERGENCIES --- Secure the area and identify witnesses for later investigation. Keep an accurate log of events.**

NOTES:

KEEP CALM