

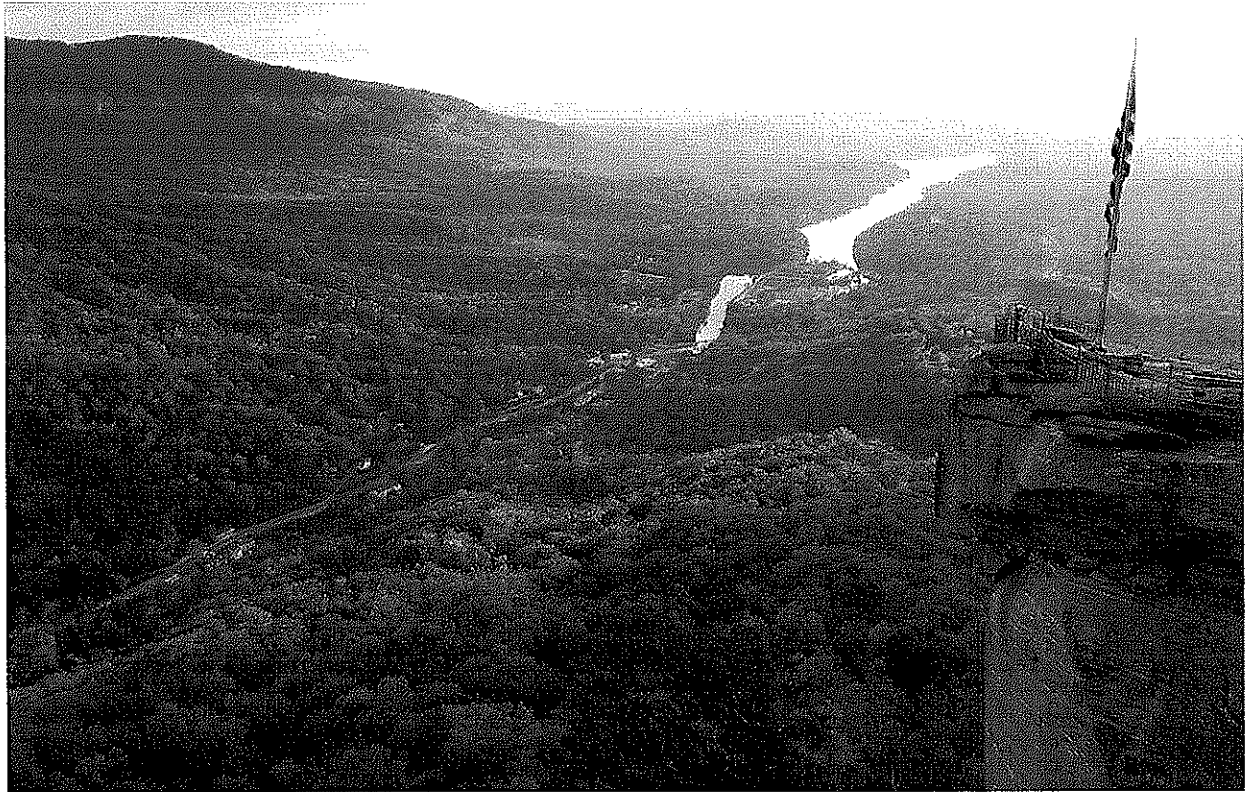
Party Rock Fire

NC-NCS-160031

Incident Action Plan

Monday, November 28, 2016

Day shift 0700 – 1900



ORGANIZATION ASSIGNMENT LIST		9. Operations Section	
1. Incident Name: PARTY ROCK FIRE		Field Ops	John Flannigan
		Planning Ops	Bill Smith
2. Date Prepared 11/27/16	3. Time 1700	a. Day Operations	
4. Operational Period 11/28/16 0700-1900		Division/Group	P Adam Barnes, Mike White
5. Command and General Staff		Division/Group	Q Matt Flock, Stuart Bedke (t)
Incident Commander	Link Smith	Division/Group	R Logan McCrae
Deputy Incident Commander	Pat Skrip	Division/Group	U Jason Rayburn
Safety Officer	Ausland Kirk, Mark Atwood 11/28, Opie Blackwell 11/28, Michael Head 11/29	Division/Group	V Ed Wallmark, Brian Reel
Safety Office Night		Suppression Repair Group John Pellissier	
Liaison Officer	Larry Goff, Richard McIntyre 11/29	b. Night Operations	
Information Officer	Tom Fields, Lyon 11/28, Storch 11/28, Truitt 12/01, Scherschel 12/01, Gosschalk 12/01	Night Operations	
		Division/Group	
6 Agency Representatives		Division/Group	
NC State Parks	Sean McElhone	Division/Group	
Lake Lure Fire Chief / EM Dir.	Ron Morgan	Division/Group	
NCEM W Branch Manager	Greg Atchley	Division/Group	
Rutherford Co. EM	Roger Hollifield	c. Night Operations	
Broad River Fire Chief	Brent Hayner	Division/Group	
Chimney Rock Fire Dept.	Chris Melton	Division/Group	
Buncombe Co. Liaison	Jerry Leatherwood	Division/Group	
Henderson Co. Asst. Fire Marshall	Jimmy Brissie	Division/Group	
NCFS District 1 Rep.	Alan Huskins	Division/Group	
Oregon Dept. of Forestry	Travis Medema	d. Structure Protection	
NC Forest Service	Dan Brandon	Division/Group	
7. Planning Section		Division/Group	
Chief	Mike Shaw	Division/Group	
Resources Unit	Colleen Kiser	Division/Group	
Situation Unit	Joe Travers, Stuart Coombs (t) 12/02	f. Air Operations Branch	
GIS Specialist	Katie Morrison, Steven Walterscheid 11/28	Air Ops Branch Director	Scott Swearingen
Fire Behavior	Mike Haasken	Air Ops Branch Director	
Demobilization Unit	Laura Backlund	Helibase Manager	Don Thomas 11/30
Documentation Unit		Air Support Grp Supervisor	
8. Logistics Section		Air Tactical Grp Supervisor	Matt Hoehna
Chief	Malcolm Hiatt	10. Finance Section	
Service Branch Director	Dawn Sleight	Chief	Keith Dehut
Support Branch Director	Steve Wilson	INBA	Patsy Michel 12/04
Supply Unit	Joe Koch	Time Unit	Stacy Fulker, Sara Thompson 12/01
Ordering Manager	Melissa Hunter 12/01	PTRC	Judy Farley 11/29
Receiving / Distribution	Edwin Lee (11/30)	EQTR	Daniel Blackburn 12/04
Ground Support Unit	Jay Morey	Cost Unit	Larry Black
Equipment Manager	Randy Kearney, Mathew Vellinga 12/02	Compenstaion/ Claims Unit Leader	Rodger Waters 12/02
Facilities Unit	Nate Sink 12/05	Computer Spec	John Miller
Food Unit	Vicki Delong, Les Hunter 11/28		
Medical Unit	Linda Barbee 11/29		
Communications Unit	Jason Berman 12/6		
COMT	Dick Ruble 11/29	Prepared by: <i>Colleen Kiser</i>	
RADO	Dwight Danner 11/29		
RADO	James Russell-Stickley 11/29		

INCIDENT OBJECTIVES	1. Incident Name Party Rock Fire	2. Date 11/27/16	3. Time 2000
----------------------------	-------------------------------------	---------------------	-----------------

4. Operational Period: 11/28/16 Day 0700 -1900

5. General Control Objectives for the Incident (include alternatives)

Operational Objectives

1. Provide for public and firefighter safety through establishment of LCES, adherence to the 10 standard fire orders / 18 watch out situations and maintaining direct and clear communications with all incident personnel, cooperators, and the general public.
2. Maintain fire in its current perimeter.
3. Keep the general public, local officials and stakeholders informed of fire status through situation updates and personal contacts.
4. Continue work to meet suppression repair standards.
5. Provide for accurate cost tracking and documentation through adherence to Incident Business Handbook procedures and NC Forest Service policy.

6. Weather Forecast for Period - See Attached Weather Forecast

7. General Safety Message - See Attached Safety Message

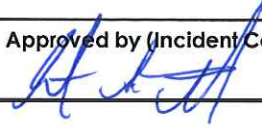
8. **Attachments (mark if attached)**

- | | | |
|---|--|---|
| <input checked="" type="checkbox"/> Incident Objectives – ICS 202 | <input checked="" type="checkbox"/> Weather Forecast | <input checked="" type="checkbox"/> Communications Plan - ICS 205 |
| <input checked="" type="checkbox"/> Organization List - ICS 203 | <input checked="" type="checkbox"/> Fire Behavior Forecast | <input checked="" type="checkbox"/> Medical Plan - ICS 206 |
| <input checked="" type="checkbox"/> Div. Assignment Lists - ICS 204 | | <input checked="" type="checkbox"/> Incident Maps |
| <input checked="" type="checkbox"/> Safety Message | | |

9. Prepared by (Planning Section Chief)



9. Approved by (Incident Commander)





Fire Weather Forecast



FORECAST NO: 14
PREDICTION FOR: Day Shift
SHIFT DATE: Monday 11/28/2016
TIME AND DATE ISSUED: 11/27/2016 1900hrs

INCIDENT: Party Rock
UNIT: NC-NCSC
SIGNED: Mike Haasken w/ Kurt Van Speybroeck
FBAN and Clear Creek IMET

Discussion:

High pressure is moving eastward giving way to increasing southerly winds and increasing humidity. Winds are expected to increase during the day as a developing storm system moves toward the SE US bringing significant rainfall by Tuesday/Wednesday. Minimum RH values today are expected to be in the 40-50% range with increasing cloudiness. Moisture will increase on Monday with showers possible during the late afternoon/evening. Winds may increase significantly across the higher terrain and Wind Advisories/High Wind Warnings may be posted for surface wind gusts above 30 mph.

WEATHER FORECAST for Today, Monday:

SKY/WEATHER: Partly Cloudy, becoming mostly cloudy with chance of showers by late afternoon.

Max Temperature: 52 to 58.

Min RH: 40-50 percent.

WINDS: -20 Foot- South 8-12 gusting to 17 mph.

Transport Winds: Southwest 10 mph.

Chance of wetting rain: 10%

LAL: 1

Tonight:

SKY/WEATHER: Mostly cloudy with showers.

Min Temperature: 36-41.

Max RH: 90 - 100%

WINDS: -20 Foot-Southwest 11-16 gusting to 25 MPH.

Chance of wetting rain: 50%

Tuesday:

SKY/WEATHER: Mostly Cloudy with rain showers.

Max Temperature: 56 to 62.

Min RH: 64-73 percent.

WINDS: -20 Foot- South 12 to 16 gusting to 25 mph.

Transport Winds: South 20 mph.

Chance of wetting rain: 100%

Fireline Observations 11/27: **Min T / Max T Max RH / Min RH**
 NC Fire RAWS #4 2910' 21 49 85% 34%

EXTENDED FORECAST:

Wednesday...Cloudy with showers and isolated thunderstorms likely. 59-63. Min RH 43-47%. Winds SSW 10-15.

Thursday... Partly Cloudy with isolated showers decreasing. 60-64. Min RH 35-45%. Winds W 8-12.

Friday...Mostly clear. 52-58. Min RH 33-43%. Winds W 5-8.

Sunrise	Sun	0716	Sunset	1715
Sunrise	Mon	0717	Sunset	1715
Source: US Naval Observatory				

FIRE BEHAVIOR FORECAST

FORECAST NUMBER: 19	TYPE OF FIRE: Wildfire
FIRE NAME: Party Rock Fire	OPERATIONAL PERIOD: 11/28/2016 Day & Night
DATE ISSUED: 11/27/2016	TIME ISSUED: 1900
UNIT: Chimney Rock State Park, Private	Signed: Mike Haasken FBAN <i>Mike Haasken</i>

MONDAY WEATHER SUMMARY:

Max Temp: 56° (+7) Min RH: 50% (+16) Winds (20'): South 8-12, G17 mph Sky Cover: Becoming cloudy
CWR: 10% Mixing Height: 2,000' ADI: 78 (good) Fuel Shading: 70% Slope: 30%

FIRE BEHAVIOR

GENERAL: The predominant fuel types on the Party Rock Fire includes hardwood leaf litter (FM 9/TL6). Thick areas of tall (10-20') Rhododendron (Sh8) are also present and burn readily in the understory. Rhododendron has burned on slope runs after preheating during surface fire and also when ignition sources occur downslope. Flame lengths of 15-20 feet in the evening were observed in the Rhodo fuel type. There are pockets of overstory and shrub layers that were scorched by the initial surface fire and are brown and available for reburn. Leaf fall from the killed shrubs and timber has increased due to wind gusts from recent frontal passages creating reburn potential. Long term drying and high temperatures have created unseasonal dry fuel in larger fuel classes. Recent freezing weather has started curing of live herbaceous fuels like grasses.

Forecasted Indices:

1 hour fuel moisture: 10%; 10 hour fuel moisture: 11%; 100 hour fuel moisture: 15%
Energy Release Component: 35 ; (90th percentile is 33, 97th percentile is 40)
Burning Index: 28 Probability of Ignition: 30% KBDI: 723 Fire Danger: Moderate

Expected Fire Behavior: If fire gets established expect moderate rates of spread & flame lengths. Potential is still there.

Timber Litter (FM9): 1' flame length and Rate of spread = 2 ch/hr. on a 30% slope
Shrub (Sh8): 6' flame length and Rate of spread = 5 ch/hr. on a 30% slope

Local Thresholds: (bold are present) Temp. over 60°, **20ft winds over 10 mph**, RH below 30% and 100hr fuel <15%

SPECIFIC:

- Continued leaf fall is covering control lines.
- Reburn may occur in leaf fall areas.

AIR OPERATIONS

Could be some bumpy air, especially later in the day.

SAFETY

STANDARD ORDER #1: Keep informed on (fire) weather conditions and forecasts.

ASSIGNMENT LIST		1. Branch	2. Division/Group			
3. Incident Name		4. Operational Period		Time: 0700 – 1900		
Party Rock Fire		Date: 11/28/16		Papa		
5. Operations Personnel						
Operations Chief	John Flannigan Bill Smith (Planning)	Division/Group Supervisor	Adam Barnes, Mike White			
Branch Director		Air Operations Director	Scott Swearingen			
6. Resources Assigned This Period						
Strike Team/Task Force/ Resource Designator	Leader	Request #	No. Pers.	Last Work Day	Drop Off PT./Time	Pick Up PT./Time
Hand Crew – Pacific Oasis	Benjamin Dodds	C-200	20	11/30	0700	1900
ENG6 E-632 A358154	Gabriel Castanon	E-1023	4	12/7	0700	1900
ENG6 Sundance 603 CH19466	Mark Bonin	E-1028	3	11/30	0700	1900
Safety	Opie Blackwell	O-1025	1	11/28	0700	1900
Line Medic	Bryan Crawley	O-1063	1	11/30	1900	0700
7. Control Operations						
<ul style="list-style-type: none"> Patrol, grid, and continue with mop up Mop-up 100' inside containment perimeter. Maintain situational awareness on snags and mitigate risks. Extinguish hot spots identified by IR crew. Extinguish all smokes visible from residences and public roadways. Open dozer berms and extinguish heat. 						
8. Special Instructions						
<ul style="list-style-type: none"> Remove garbage and unnecessary flagging and signs. Back haul any garbage and excess equipment. 						
9. Division/Group Communication Summary						
Function	Frequency - RX	Frequency - TX	Tone	Channel		
Command RPT				EVENT FOX 1 Viper		
Tactical	151.3100	151.3100	136.5	INC. 3		
A/G Primary	171.5750	171.5750	131.8	INC. 8		
A/G Secondary	167.4250	167.4250	110.9	INC. 13		
Prepared by (Resource Unit Leader)		Approved by (Planning Section Chief)		Date	Time	
Coleen Tiser		Michael H. Sh...		November 27, 2016	2100	

ASSIGNMENT LIST		1. Branch	2. Division/Group						
			Quebec						
3. Incident Name		4. Operational Period			Date: 11/28/16			Time: 0700 – 1900	
Party Rock Fire									
5. Operations Personnel									
Operations Chief		John Flannigan Bill Smith (Planning)			Division/Group Supervisor		Matt Flock, Stuart Bedke (t)		
Branch Director					Air Operations Director		Scott Swearingen		
6. Resources Assigned This Period									
Strike Team/Task Force/ Resource Designator		Leader		Request #	No. Pers.	Last Work Day	Drop Off PT./Time	Pick Up PT./Time	
DOZ3 11x35 CatD5C		Jeremiah Greene O-1.37		E-143	1	11/30	0700	1900	
ENG6 B-912 G071HC		Jerry McGraw		E-1040	3	11/30	0700	1900	
ENG6 B-31 G098CY		Christopher Teter		E-1038	2	11/30	0700	1900	
Safety		Opie Blackwell		O-1025	1	11/28	0700	1900	
Line Medic – Drop Point 11		Terry Williamson		O-1065	1	12/3	0700	1900	
7. Control Operations									
<ul style="list-style-type: none"> Patrol, grid, and continue with mop up Mop-up 100' inside containment perimeter. Maintain situational awareness on snags and mitigate risks. Extinguish hot spots identified by IR crew Extinguish all smokes visible from residences and public roadways. 									
8. Special Instructions									
<ul style="list-style-type: none"> Remove garbage and unnecessary flagging and signs. Back haul any garbage and excess equipment. 									
9. Division/Group Communication Summary									
Function	Frequency - RX	Frequency - TX	Tone	Channel					
Command RPT				EVENT FOX 1 Viper					
Tactical	151.4600	151.4600	136.5	INC. 2					
A/G Primary	171.5750	171.5750	131.8	INC. 8					
A/G Secondary	167.4250	167.4250	110.9	INC. 13					
Prepared by (Resource Unit Leader)		Approved by (Planning Section Chief)			Date		Time		
Colleen Kiser		Michael A. St...			November 27, 2016		2100		

ASSIGNMENT LIST		1. Branch	2. Division/Group				Uniform	
3. Incident Name Party Rock Fire		4. Operational Period Date: 11/28/16		Time: 0700 – 1900				
5. Operations Personnel								
Operations Chief	John Flannigan Bill Smith (Planning)		Division/Group Supervisor	Jason Rayburn				
Branch Director			Air Operations Director	Scott Swearingen				
6. Resources Assigned This Period								
Strike Team/Task Force/ Resource Designator	Leader		Request #	No. Pers.	Last Work Day	Drop Off PT./Time	Pick Up PT./Time	
ENG6 Chihuahua GGS170	Omar Gonzalez		E-1013	3	11/30	0700	1900	
ENG6 E-145 G387FW	Nade Galligan		E-1030	4	11/29	0700	1900	
ENG6 Carson E-641 A355483	Rene Arellano		E-1031	3	12/2	0700	1900	
Safety	Mike Head		O-1027	1	11/29	1900	0700	
Line Medic	Karl Larsen		O-1017	1	11/28	0700	1900	
ENG6 B-405 G111EL*	Frank Zupancic		E-1024	3	11/30	*IA Resource Stage at ICP		
ENG6 B-192 G097DN*	Louis Mirabelli		E-1048	3	11/30	*IA Resource Stage at ICP		
7. Control Operations								
<ul style="list-style-type: none"> Patrol, grid, and continue with mop up Mop-up 100' inside containment perimeter. Maintain situational awareness on snags and mitigate risks. Extinguish hot spots identified by IR crew. Extinguish all smokes visible from residences and public roadways 								
8. Special Instructions								
<ul style="list-style-type: none"> Remove garbage and unnecessary flagging and signs. Back haul any garbage and excess equipment. 								
9. Division/Group Communication Summary								
Function	Frequency - RX	Frequency - TX	Tone	Channel				
Command RPT				EVENT FOX 1 Viper				
Tactical	151.4600	151.4600	136.5	INC. 2				
A/G Primary	171.5750	171.5750	131.8	INC. 8				
A/G Secondary	167.4250	167.4250	110.9	INC. 13				
Prepared by (Resource Unit Leader)	Approved by (Planning Section Chief)		Date	Time				
<i>Colleen Kiser</i>	<i>Michael Ash</i>		November 27, 2016	2100				

ASSIGNMENT LIST		1. Branch	2. Division/Group				
			Romeo				
3. Incident Name Party Rock Fire		4. Operational Period Date: 11/28/16			Time: 0700 – 1900		
5. Operations Personnel							
Operations Chief	John Flannigan Bill Smith (Planning)		Division/Group Supervisor	Logan McCrae			
Branch Director			Air Operations Director	Scott Swearingen			
6. Resources Assigned This Period							
Strike Team/Task Force/ Resource Designator	Leader		Request #	No. Pers.	Last Work Day	Drop Off PT./Time	Pick Up PT./Time
ENG6 Brush-10 G94491	Christian Mee		E-1025	3	11/29	0700	1900
ENG6 B-261 G021FP	Brian Logsdon		E-1046	3	11/29	0700	1900
Safety	Opie Blackwell		O-1025	1	11/28	0700	1900
7. Control Operations							
<ul style="list-style-type: none"> Patrol, grid, and continue with mop up Mop-up 100' inside containment perimeter. Maintain situational awareness on snags and mitigate risks. Extinguish all smokes visible from residences and public roadways. Open dozer berms and extinguish heat. 							
8. Special Instructions							
<ul style="list-style-type: none"> Remove garbage and unnecessary flagging and signs. Back haul any garbage and excess equipment. 							
9. Division/Group Communication Summary							
Function	Frequency - RX	Frequency - TX	Tone	Channel			
Command RPT				EVENT FOX 1 Viper			
Tactical	151.2650	151.2650	136.5	INC. 4			
A/G Primary	171.5750	171.5750	131.8	INC. 8			
A/G Secondary	167.4250	167.4250	110.9	INC. 13			
Prepared by (Resource Unit Leader) <i>Colleen Kiser</i>		Approved by (Planning Section Chief) <i>Michael H. St...</i>		Date November 27, 2016	Time 2100		

ASSIGNMENT LIST		1. Branch	2. Division/Group				
3. Incident Name		4. Operational Period					
Party Rock Fire		Date: 11/28/16		Time: 0700 – 1900			
5. Operations Personnel							
Operations Chief	John Flannigan Bill Smith (Planning)		Division/Group Supervisor	Ed Wallmark			
Branch Director			Air Operations Director	Scott Swearingen			
6. Resources Assigned This Period							
Strike Team/Task Force/ Resource Designator	Leader	Request #	No. Pers.	Last Work Day	Drop Off PT./Time	Pick Up PT./Time	
Hand Crew State Parks - Blue	Joseph Shimel	C-15	8	*	0700	1900	
Hand Crew – State Parks – Red (w/ E-234)	Austin Paul	C-27	8	*	0700	1900	
ENG6 AW16 492RMT	Rolf Kist	E-1012	2	11/30	0700	1900	
ENG6 E-52 CG52364	Theodore Hebrard	E-1020	3	11/30	0700	1900	
Safety	Mike Head	O-1027	1	11/29	0700	1900	
Line Medic	Karl Larsen	O-1017	1	11/28	0700	1900	
7. Control Operations							
<ul style="list-style-type: none"> Patrol, grid, and continue with mop up Mop-up 100' inside containment perimeter. Maintain situational awareness on snags and mitigate risks. Open dozer berms and extinguish heat. 							
8. Special Instructions							
<ul style="list-style-type: none"> Remove garbage and unnecessary flagging and signs. Back haul any garbage and excess equipment. *Switching crews out every 5 days. 							
9. Division/Group Communication Summary							
Function	Frequency - RX	Frequency - TX	Tone	Channel			
Command RPT				EVENT FOX 1 Viper			
Tactical	151.2800	151.2800	136.5	INC. 5			
A/G Primary	171.5750	171.5750	131.8	INC. 8			
A/G Secondary	167.4250	167.4250	110.9	INC. 13			
Prepared by (Resource Unit Leader)	Approved by (Planning Section Chief)		Date	Time			
<i>Colleen Kiser</i>	<i>Michael A. Sh...</i>		November 27, 2016	2100			

INCIDENT RADIO COMMUNICATIONS PLAN				1. Incident Name PARTY ROCK FIRE		2. Date Time Prepared 11/27/2016		3. Operational Period Date 11/28/2016 DAY	
System	Chn./Talk grp.	Function	Frequency	Tone	Mode	Assignment	Remarks		
NCFS BK	INC. 2	TAC	RX: 151.4600	136.5	N	DIVS. Q & U			
			TX: 151.4600	136.5					
NCFS BK	INC. 3	TAC	RX: 151.3100	136.5	N	DIV. P			
			TX: 151.3100	136.5					
NCFS BK	INC. 4	TAC	RX: 151.2650	136.5	N	DIV. R			
			TX: 151.2650	136.5					
NCFS BK	INC. 5	TAC	RX: 151.2800	136.5	N	DIV. V			
			TX: 151.2800	136.5					
NCFS BK	INC 8	AIR TO GROUND PRIMARY	RX: 171.5750	131.8	N	OPERATIONS		<u>NCFS</u> AIR-TO-GROUND	
			TX: 171.5750	131.8					
NCFS BK	INC 13	AIR TO GROUND SECONDARY	RX: 167.4250	none	N	OPERATIONS		<u>U.S.</u> AIR-TO-GROUND	
			TX: 167.4250	110.9					
VIPER	EVENT FOX 1	COMMAND	RX:			OPERATIONS / COMMUNICATIONS			
VIPER	EVENT FOX 2	VIPER UTILITY	RX:			TO BE ASSIGNED BY COMM		AS NEEDED	
VIPER	EVENT FOX 3	LOGISTICS	RX:			LOGISTICS			
VIPER	EVENT FOX 4	OPERATIONS	RX:			TO BE ASSIGNED BY OPS		AS NEEDED	
VIPER	EVENT ECHO 2	OPERATIONS	RX:			RUTHERFORD COUNTY		STRUCTURE PROTECTION	
NCFS	NCFS CALL	TAC	RX: 172.2750	131.8	N	TRAVEL		Use When Traveling	
			TX: 172.2750	131.8					
NCFS	INC 15	AIR GUARD	RX: 168.6250	none	N	AIR GUARD		EMERGENCY CONTACT WITH AIRCRAFT	
			TX: 168.6250	110.9					
5. Prepared by (Communications Unit) DICK RUBLE / COML									
COMMUNICATIONS MONITORS COMMAND <u>FOXTROT 1</u>									

AIR OPERATIONS SUMMARY 220		Prepared By: Scott Swearingen		Prepared: 11/27/2016		Prepared Time: 1730 hrs.	
1. INCIDENT NAME: Party Rock		2. OPERATIONAL PERIOD 11/28/2016		START TIME: 0800	END TIME: 1730	SUNRISE: 0717	SUNSET: 1716

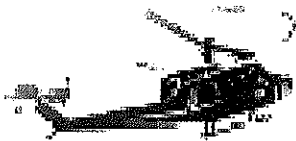
<p>3. REMARKS (Safety Notes, Hazards, Air Operations Special Equipment, etc.). AVIATION SAFETY IS A TEAM EFFORT</p> <p style="text-align: center;">AIR OPERATIONS INTENT</p> <p><i>ALL MISSIONS WILL BE ANALYZED IN TERMS OF HAZARDS AND RISKS</i></p> <ul style="list-style-type: none"> • THE RISK ASSESSMENT IS AN OPEN PROCESS WELCOMING INPUT. • HAZARDS WILL BE MITIGATED; RISK WILL BE REDUCED. • RISK MANAGEMENT PROCESS WILL BE DOCUMENTED AND DISPLAYED. <p style="text-align: center;">IF A MISSION FEELS UNSAFE, IDENTIFY SAFE ALTERNATIVES!</p>	<p>4. READY ALERT AIRCRAFT:</p> <p>Medevac Aircraft: MAMA = Mountain Area Medical Airlift See Medical Plan Order through Communications</p> <p>Extraction: North Carolina N.G. @ Macon Co. Airport UH-60 w/hoist+EMT Short Haul T3 heli @ TOC airport in Georgia</p>
--	---

6. PERSONNEL	NAME	PHONE #	7. FREQUENCIES	AM	FM	8. FIXED-WING Avail/ Type/ Make-Model/ N#/ Base
AOBD	Scott Swearingen	541-580-7485	TFR Primary	126.250		AIRTANKERS: Order thru ATGS to Asheville Dispatch.
ATGS	Matt Hoehna	541-969-8461	Secondary Victor	123.125		ATGS Platform – 9AC AS350
HEB2	Don Thomas	970-382-1837	Primary Air/Ground (NFCS A/G)		171.5750 tx/rx tone 131.8	Aircraft Costs e-mail: larry.black@oregon.gov
			Secondary Air/Ground (USFS A/G)		167.4250 Tx tone 110.9	
Party Rock Helibase	Johnson Field @ Hendersonville Airport	35°18.378' N 82°26.030' W	DECK		163.100	Dispatch: R-3 Asheville 828-665-8688
			Air Guard		168.6250 (110.9 TX)	

9. HELICOPTERS (Use Additional Sheets as Necessary)

FAA N#	TY	MAKE/ MODEL	BASE	AVAIL	START	REMARKS	FAA N#	TY	MAKE/ MODEL	BASE	AVAIL	START	REMARKS
9AC	3	AS-350	Party Rock Helibase	0800	0700	AA/Recon/PSD/IA A-30							
						Tentative Release @ 1200							

DIP SITES — Lake Lure N 35° 26.17' x W 82° 11.83' Lake Charles N 35° 28.73' x W 82° 15.23'
HELISPOTS — H-2: N 35° 28.195' x W 82° 15.449' H-3: N 35° 25.277' x W 82° 11.854'



SAFETY MESSAGE

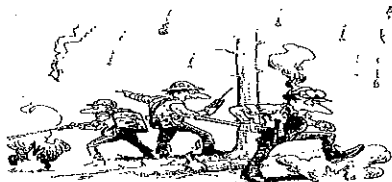
SAFETY IS OUR FIRST PRIORITY

Fire fighter safety comes first on every fire, every time

Incident: Party Rock	Date: November 28, 2016	Shift: Day
-----------------------------	--------------------------------	-------------------

SAFETY THOUGHT

We have plenty of work yet to do. Do not become complacent. The hazards are still there. Our awareness needs to be high - continue to practice situation awareness today and every day.



MAJOR HAZARDS AND RISKS

Stump Holes Hazardous Trees Aviation	Complacency Communication Steep Terrain	Wildlife Driving/Roads Rolling Material
---	--	--

Hazardous Attitudes That Can Lead to Complacency

- | | |
|--|--|
| <ul style="list-style-type: none"> • Invulnerable – Can't happen to us • Anti-Authority – Disregard of the team effort • Impulsive – Do something even if it's wrong • Macho – Trying to impress or prove something. | <ul style="list-style-type: none"> • Complacent – Just another day – Just another fire • Resigned – We can't make a difference • Group Think – Afraid to speak up or disagree |
|--|--|

Attributes That Guard Against Complacency

- | | |
|---|--|
| Be proficient in your job, both technically and as a leader
Keep busy! Be determined to finish the job you came here to do
Take charge when in charge
Adhere to professional standard operating procedures | <ul style="list-style-type: none"> • Continually Practice Situational Awareness • Put the safety of your subordinates above all other objectives • Provide accurate and timely briefings • Continually make yourself available and visible to subordinates |
|---|--|

Line Safety Officer	Safety Officer
See IAP	Kirk Ausland

Smith Type 1 IMT

LCES Analysis of Tactical Actions

Date and Time Prepared: 11/27/16 0919 Operational Period: 11/28/16 Day

Incident Name:	Divisions/Groups											Mitigations			
	P	Q	R	U	V	Night E	Night W	Camp							
Party Rock Fire															
TACTICAL HAZARDS															
Underslung Fireline	X		X	X	X	X					X				Monitor (look outs, patrols) lines to ensure fire doesn't cross. Position remaining fuels to prevent roll out. Identify escape routes and nearest safety zones.
Mid-Slope Fireline	X		X	X	X	X					X				Monitor (look outs, patrols) lines. Position fuels to prevent roll out. Identify escape routes and nearest safety zones.
Extreme Conditions (Fuels)	X	X	X	X	X	X					X				Prevent embers from becoming established through pretreating (water, retardent) unburned fuels near control lines.
Unburned Area / Reburn Potential	X	X	X	X	X	X					X				Monitor burned area and control lines to ensure leaves don't accumulate.
Hazard Trees	X	X	X	X	X	X					X				IRPG Pg. 79, Identify and flag hazard trees. Look Up, Down and Around.
Steep Terrain (footing, rocks)	X	X	X	X	X	X					X				Watch footing and maintain spacing. Be aware and notify others of rolling material.
Transportation	X	X	X	X	X	X					X				Reduce speeds, Drive defensively. Park vehicles for egress (back in), use spotters. Follow traffic plans. Use seatbelts, headlights, & keep windsheids clean.
Communications	X	X	X	X	X	X					X				Ensure radio is cloned with the current communications plan and scan appropriate channels. Test prior to engaging fire, check during operational period.
Structure Protection	X	X	X	X	X	X					X				If structural resources are needed they can be reached on ECHO 2 (Viper radio channel 2) Notify communications first.
Air Operations (multiple aircraft, line support)	X	X	X	X	X	X					X				Monitor air to ground. Flight follow through Incident Air Attack. Keep drop areas clear of personnel. IRPG pg 44.
Mechanical Equipment	X	X	X	X	X	X					X				Use PPE, ensure all safety devices are functional. Establish eye contact with operator before approaching equipment. Maintain proper spacing from equipment working in the area.
Wildlife	X	X	X	X	X	X					X				Avoid disposing of uneaten food on the line and use trash cans in camp.
Parking												X			Follow traffic patterns. Use spotters when backing. Watch for individuals on foot.
Lighting (Low)													X		Carry a flashlight and avoid dark areas.
Food area													X		Watch for tripping hazards and other people. Wash hands prior to eating.
Prepared: 11/27/16	Safety Officers: Kirk Ausland (SOF1)														

[Handwritten Signature]

MEDICAL PLAN (ICS 206 WF)

1. Incident/Project Name	2. Operational Period
Party Rock Fire	11/28/2016

3. Ambulance Services			
Name	Complete Address	Phone & EMS Frequency	Advanced Life Support (ALS) Yes No
Buncombe County EMS	164 Erwin Hills Rd. Ashville, NC. 28806	Commo Fox 1 (828) 250-6650	X
Rutherford County EMS	140 Bills Creek Rd. Lake Lure, NC. 28746	Commo Fox 1 911	X
Henderson County EMS	820 N. Justice St. Henderson, NC. 28791	Commo Fox 1 (828) 687-4912	X

4. Air Ambulance Services		
Name	Phone	Type of Aircraft & Capability
(MAMA) Mountain Area Medical Airlift	Commo Fox 1	ALS / Night Capable
HART / SHORT HAUL SHIP	Commo Fox 1	BLS / Night capable

5. Hospitals								
Name Complete Address	GPS Datum – WGS 84 Coordinate Standard Degrees Decimal Minutes DD° MM.MMM' N - Lat DD° MM.MMM' W - Long		Travel Time Air Gnd		Phone	Helipad Yes No		Level of Care Facility
	Pardee Hospital Henderson, NC.	Lat: 35 19.251' Long: 82 28.065'		30 min.		(828) 696-1000	X	
Mission Hospital Ashville, NC.	Lat: 35 34.595' Long: 82 32.952'	8 min	40 min.	(828) 213-1111	X		Level 2 Trauma Center	
Rutherford Reg Med Ctr Rutherfordton, NC.	Lat: 33 28.978' Long: 82 5.408'	1hr	3hr	(828) 286-5000	X		Level 2, NO Trauma	
Joseph M. Still Burn Centr Augusta, Ga	Lat: 33 29.158' Long: 82 5.681'	1hr	3hr	(706) 651-6661	X		Burn Center	

LINE EMERGENCY:
Crew Supervisor is to contact DIVS w/ patient complaint/condition and location.

- Division Supervisor contacts:
 - Line EMT/Paramedic
 - Communications Unit

DIVS will run medical emergency on Command Channel Fox 1
*** Communication will Clear Command Channel for Emergency Traffic.

Communications will contact:

- Medical Unit
- Safety
- Operations

Medical Unit will:

1. Assess Level of care needed.
2. Coordinate the appropriate resources.
3. Notify receiving hospital.

CAMP EMERGENCY: (Illness or Injury)
Contact Medical Unit with patient complaint/condition and location.

Medical Unit will:

- Respond to incident
- Contact:
 1. Communications
 2. Safety
 3. Logistics
 4. Operations
 5. Crew Supervisor

INJURY REPORTING PROCEDURES

NATURE OF INJURY _____ #Pts _____

LOCATION OF PATIENT _____

SPECIAL RESCUE/EXTRICATION NEEDS _____

TRANSPORTATION REQUESTED BY: AIR _____ GRD _____

“MEDI-VAC” = LIFE THREATENING EMERGENCIES ONLY

“GROUND MEDICAL TRANSPORT” = NON-LIFETHREATENING INJURIES/ILLNESS.

RONDEZVOUS _____

POINT OF PICKUP _____

LAT _____ LONG _____

PATIENT UNIT ID _____

IS A EMT WITH PATIENT: YES _____ NO _____

AGE _____ SEX: MALE _____ FEMALE _____

ALL EMERGENCIES --- Secure the area and identify witnesses for later investigation. Keep an accurate log of events.

NOTES: _____

KEEP CALM

ICS 206 8-78	9. PREPARED BY (MEDICAL UNIT LEADER) <i>Natalie Keys MEOL+</i>	10. REVIEWED BY (SAFETY OFFICER) <i>Kyle Hill SOFI</i>
--------------	---	---

11/28/16

Meal Times

➤ **Breakfast: 0630 – 0830**

Day Shift pick up bag lunches at breakfast.

➤ **Dinner: 1800 – 2000**

Night Shift pick up bag meals at dinner.

All meals will be served in the Roosevelt Hall located at the back side of the Lake Lure Inn.

**** Please do not go into/through the Inn.**

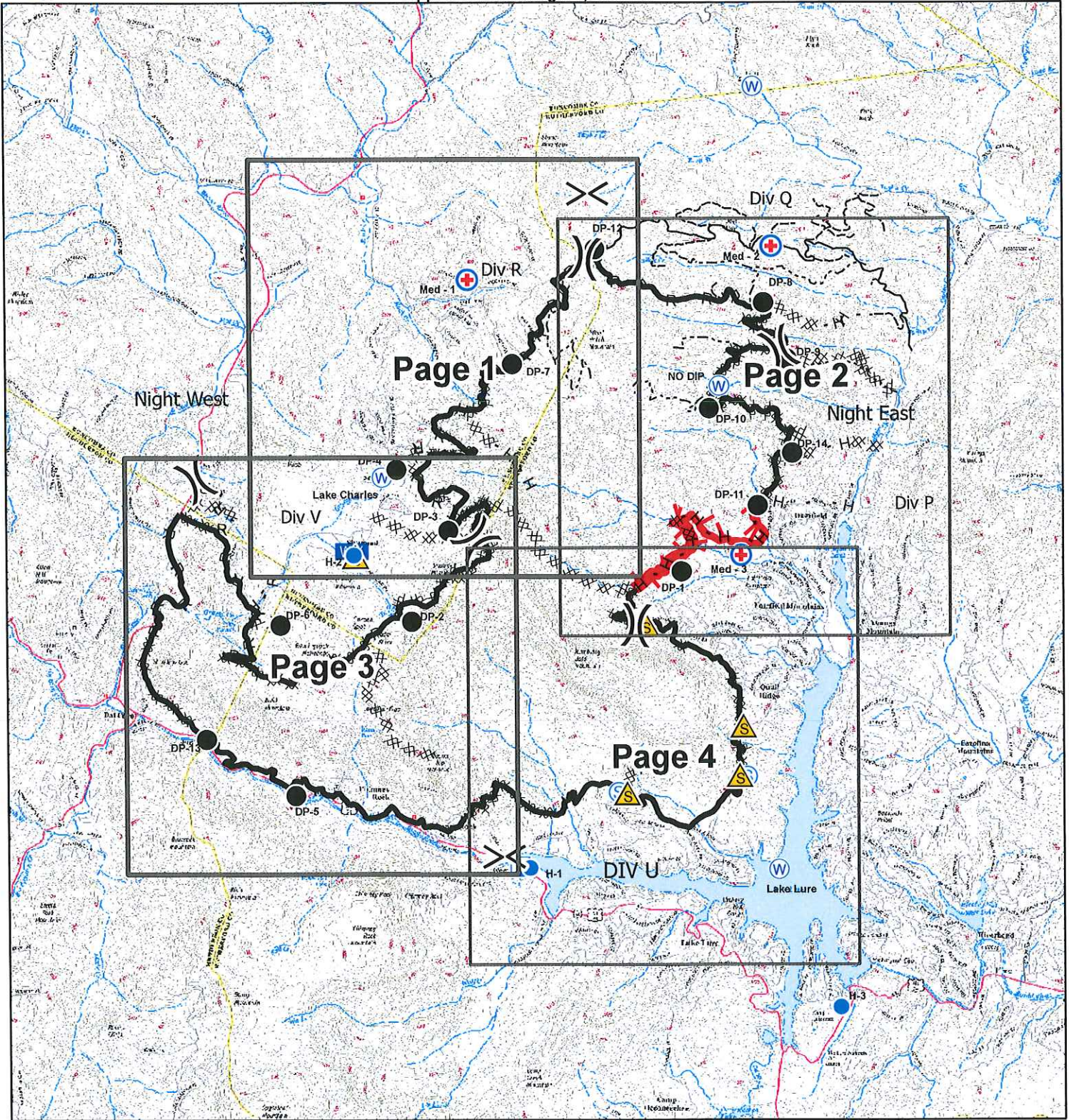


IAP Index Map Party Rock Fire

November 28, 2016

NC-NCS-160031

Approximate Acreage: 7,145 acres



Water Source



Mobile Weather Unit



Completed Dozer Line



Division



Drop Point



Safety Zone



Hand Line



Hotspot



Staging Area



Road as Completed Line



Perimeters shown are based on the best available information at the time of map production.
Latest Intel: 20161122 @ 1600



Map Datum: NAD83 Feet

11/27/2016
2014 hrs



Medi/Vac Site



Incident Command Post



Uncontrolled Fire Edge



Local Roads



Improved Rd



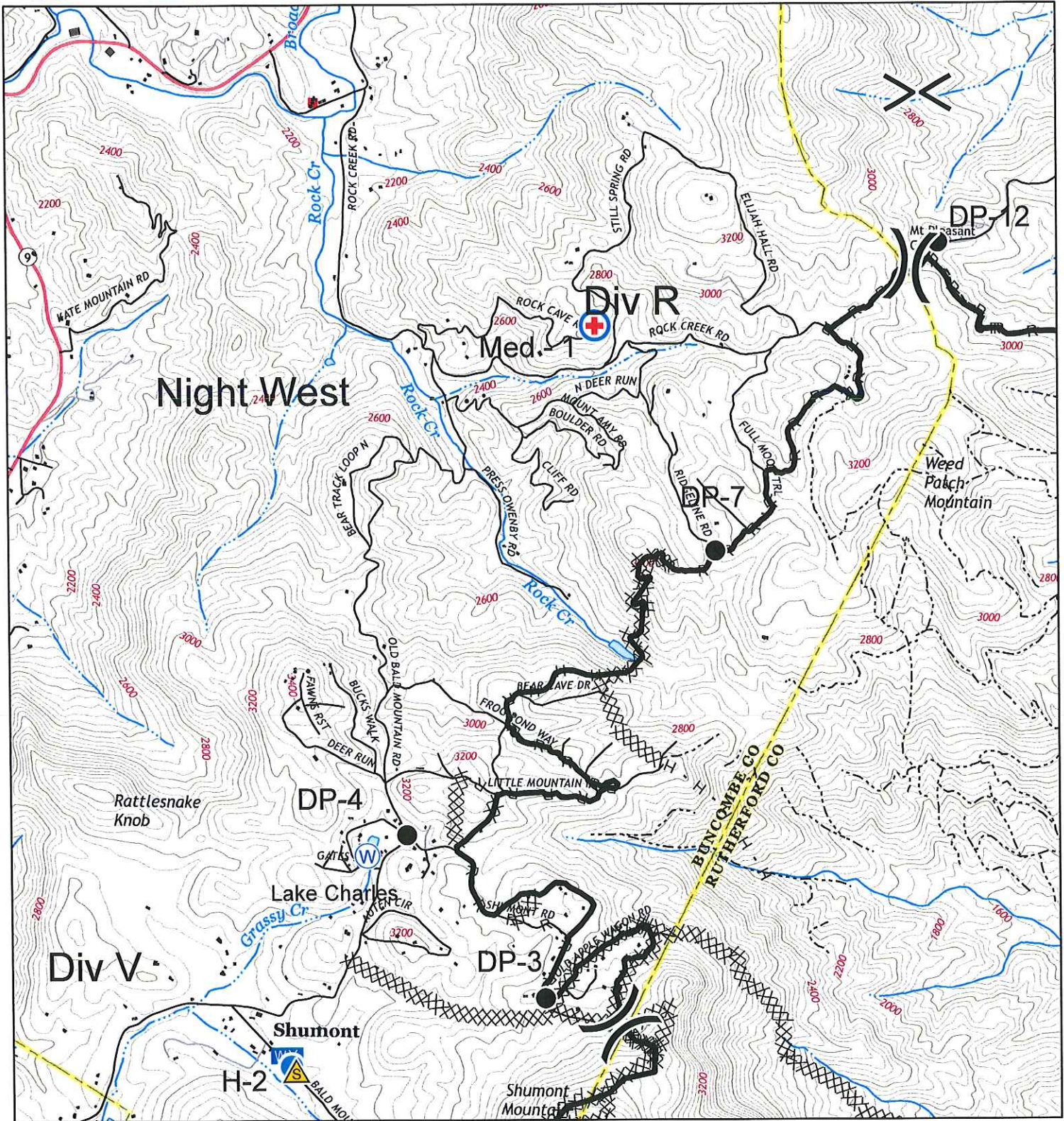
Unimproved Rd



IAP Map Party Rock Fire

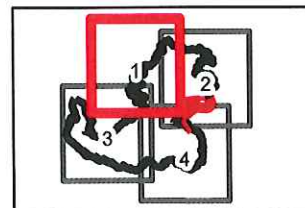
NC-NCS-160031
Approximate Acreage: 7,145 acres

November 28, 2016



- Division
- Water Source
- Helispot
- MediVac Site
- Mobile Weather Unit
- Completed Dozer Line
- R - Road as Completed Line
- H - Hand Line
- Safety Zone
- Completed Line
- Structures
- Local Roads
- Improved Rd
- Unimproved Rd

0 0.5 1 Miles



Map Page 1

Map Datum: NAD83 Feet
11/27/2016
2019 hrs

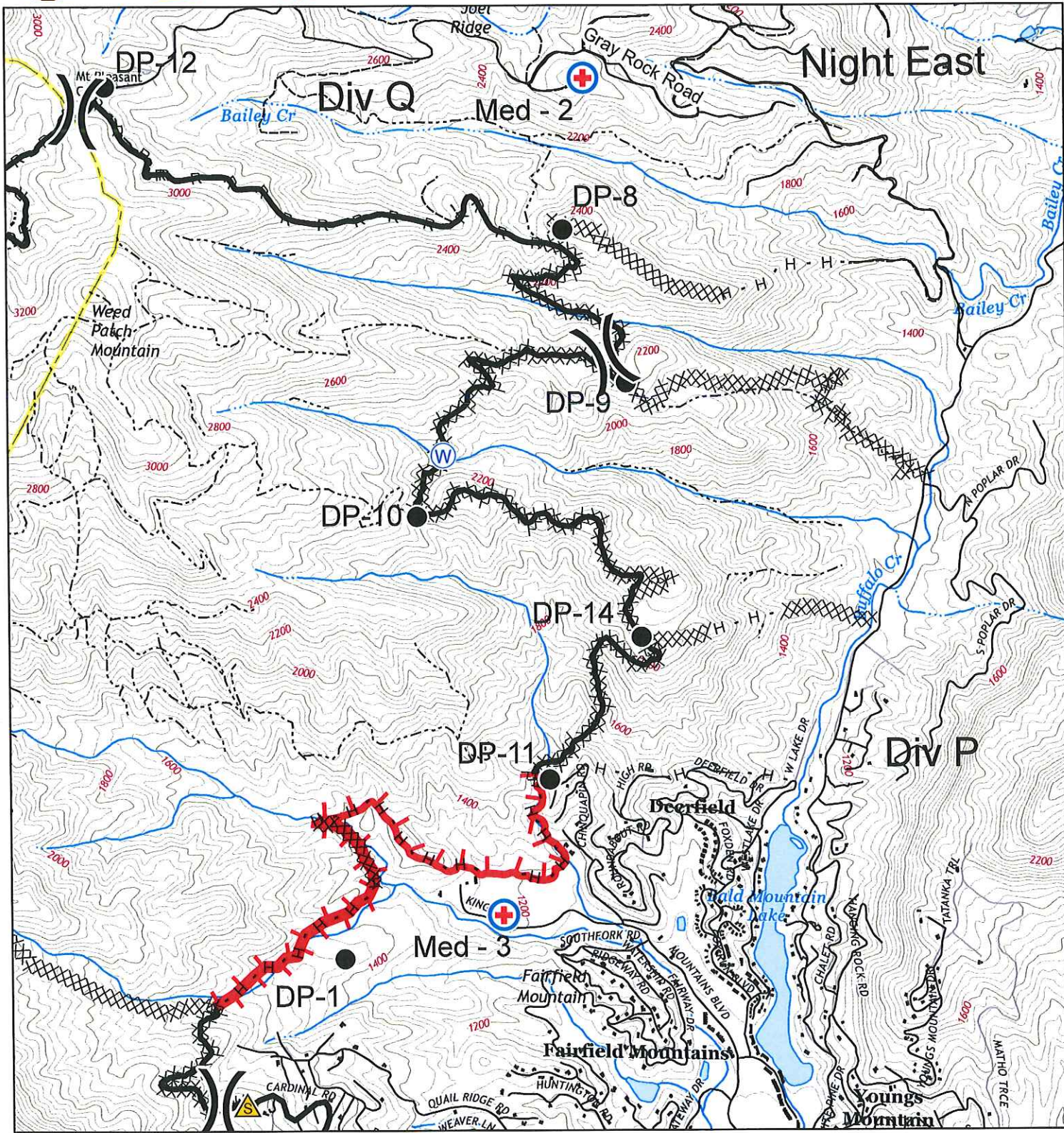


IAP Map

Party Rock Fire

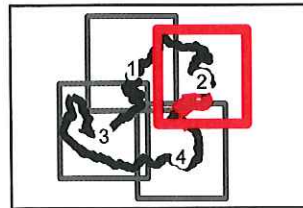
NC-NCS-160031
Approximate Acreage: 7,145 acres

November 28, 2016



- | | | | |
|--|--|--|--|
| | | | |
| | | | |
| | | | |
| | | | |

0 0.5 1 Miles



Map Page

2

Map Datum: NAD83 Feet

11/27/2016

2019 hrs

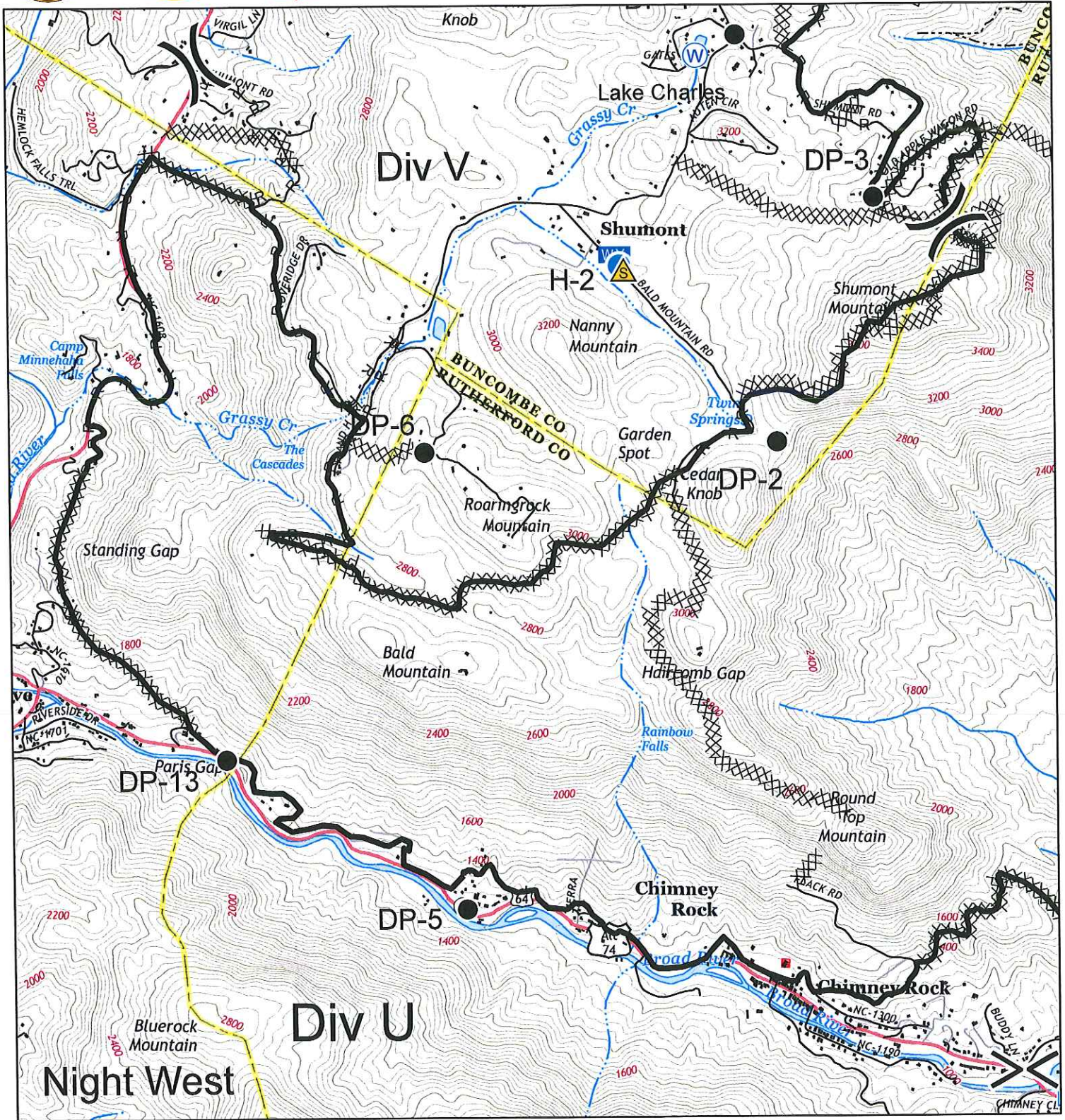


IAP Map

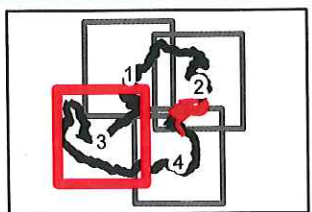
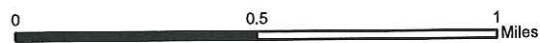
Party Rock Fire

NC-NCS-160031
Approximate Acreage: 7,145 acres

November 28, 2016



- Division
- Hellspot
- Safety Zone
- Mobile Weather Unit
- Drop Point
- Water Source
- Incident Command Post
- Completed Dozer Line
- R - Road as Completed Line
- H - Hand Line
- Completed Line
- Structures
- Local Roads
- Improved Road
- Unimproved Road



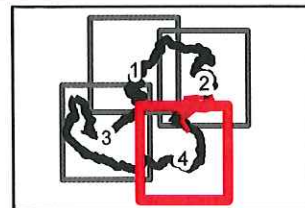
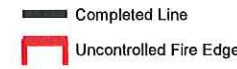
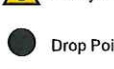
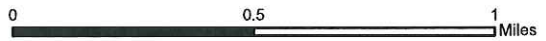
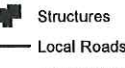
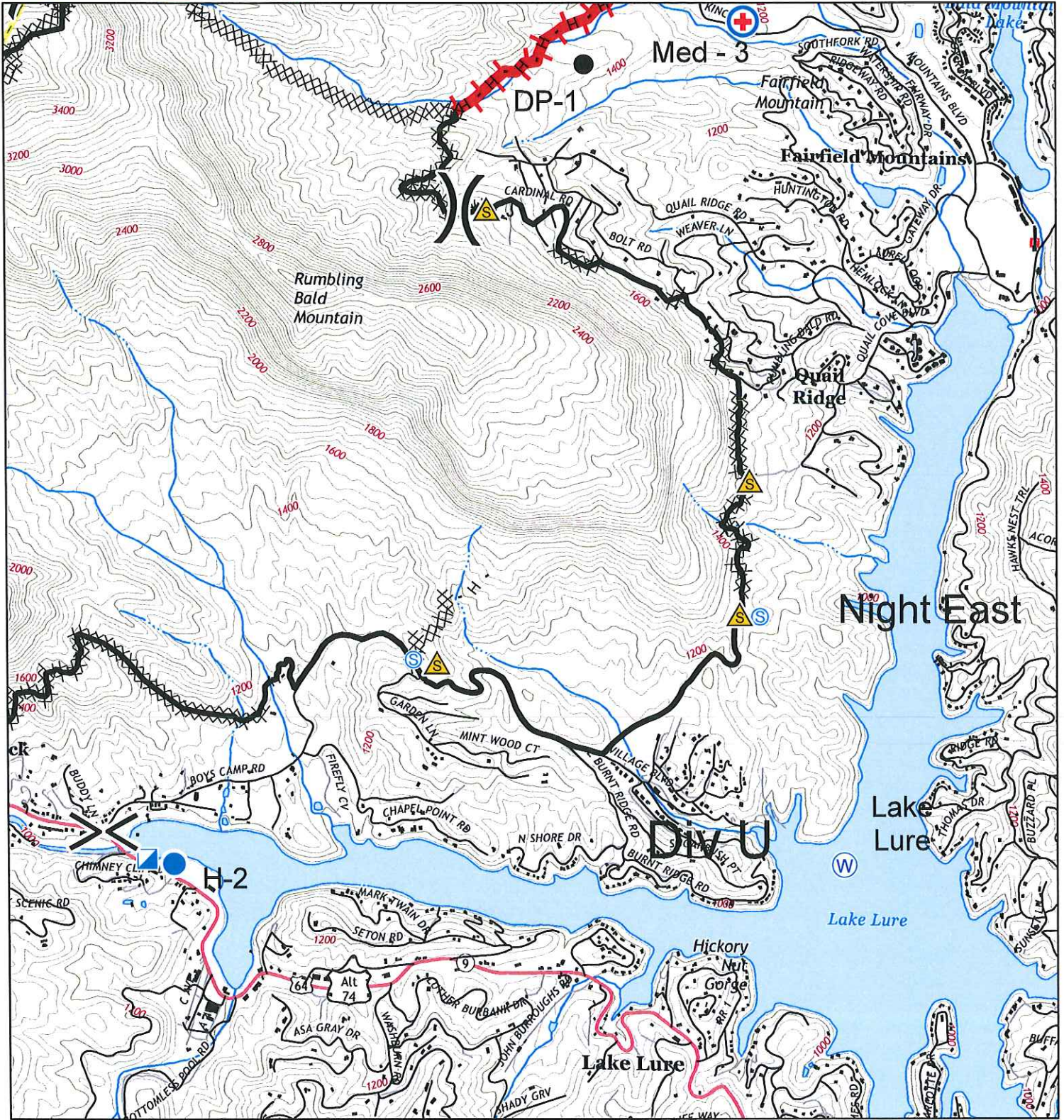
Map Page
3
Map Datum: NAD83 Feet
11/27/2016
2019 hrs



IAP Map Party Rock Fire

NC-NCS-160031
Approximate Acreage: 7,145 acres

November 28, 2016



Map Page
4

Map Datum: NAD83 Feet
11/27/2016
2019 hrs

11/28/2016

TENTATIVE RELEASE

PARTY ROCK US-NC-NCS-160031

EQUIPMENT

E-1011	1500	(ENG6)	ENG6 E-611 A367735
E-1017	1500	(ENG6)	ENG6 E-11 930RSG
E-1035	1500	(ENG6)	ENG6 GUADALUPE B-241

OVERHEAD

O-1014	0700	(DIVS)	HOEHNA, MATTHEW
O-36	0800	(FDUL)	HUNTER, LESLIE
O-1022	1200	(MEDL)	HAYES, NATALIA
O-1048	1300	(HEB2)	THOMAS, DON
O-1057	1400	(SITL)	COOMBS, STUART
O-1036	1700	(STEN)	BEDKE, STUART
O-1037	1800	(STEN)	DEWITT, KENNETH
O-1041	1800	(STEN)	KOSAK, JEREMY

LINE EMERGENCY:

Crew Supervisor is to contact DIVS w/ patient complaint/condition and location.

- **Division Supervisor contacts:**
 - **Line EMT/Paramedic**
 - **Communications Unit**

DIVS will run medical emergency on Command Channel Fox 1

***** Communication will Clear Command Channel for Emergency Traffic.**

Communications will contact:

- Medical Unit
- Safety
- Operations

Medical Unit will:

1. Assess Level of care needed.
2. Coordinate the appropriate resources.
3. Notify receiving hospital.

CAMP EMERGENCY: (Illness or Injury)

Contact Medical Unit with patient complaint/condition and location.

Medical Unit will:

- Respond to incident
- Contact:
 1. Communications
 2. Safety
 3. Logistics
 4. Operations
 5. Crew Supervisor

INJURY REPORTING PROCEDURES

CONTACT COMMO / DISPATCH

OF PATIENTS _____

REPORT NATURE OF INJURY/ MECHANISM OF INJURY.

NEED FOR ADDITIONAL RESOURCES
(Extrication, Equipment, Line Medics)

CONSCIOUS: YES ___ NO ___ (NO =MEDI-VAC)

BREATHING: YES ___ NO ___ (NO = MEDI-VAC)

"MEDI-VAC" = LIFE THREATENING EMERGENCIES ONLY

"GROUND MEDICAL TRANSPORT" = NON- LIFE THREATENING INJURIES/ILLNESS.

IDENTIFY POINT OF CONTACT

LOCATION OF PATIENT _____

TRANSPORTATION REQUESTED BY: AIR ___ GRD ___

RENDEZVOUS _____

POINT OF PICKUP _____

LAT _____ LONG _____

AGE _____ WEIGHT _____ MALE _____ FEMALE _____

PATIENT UNIT ID _____

IS AN EMT WITH PATIENT: YES ___ NO ___

****ALL EMERGENCIES --- Secure the area and identify witnesses for later investigation. Keep an accurate log of events.**

NOTES:

KEEP CALM