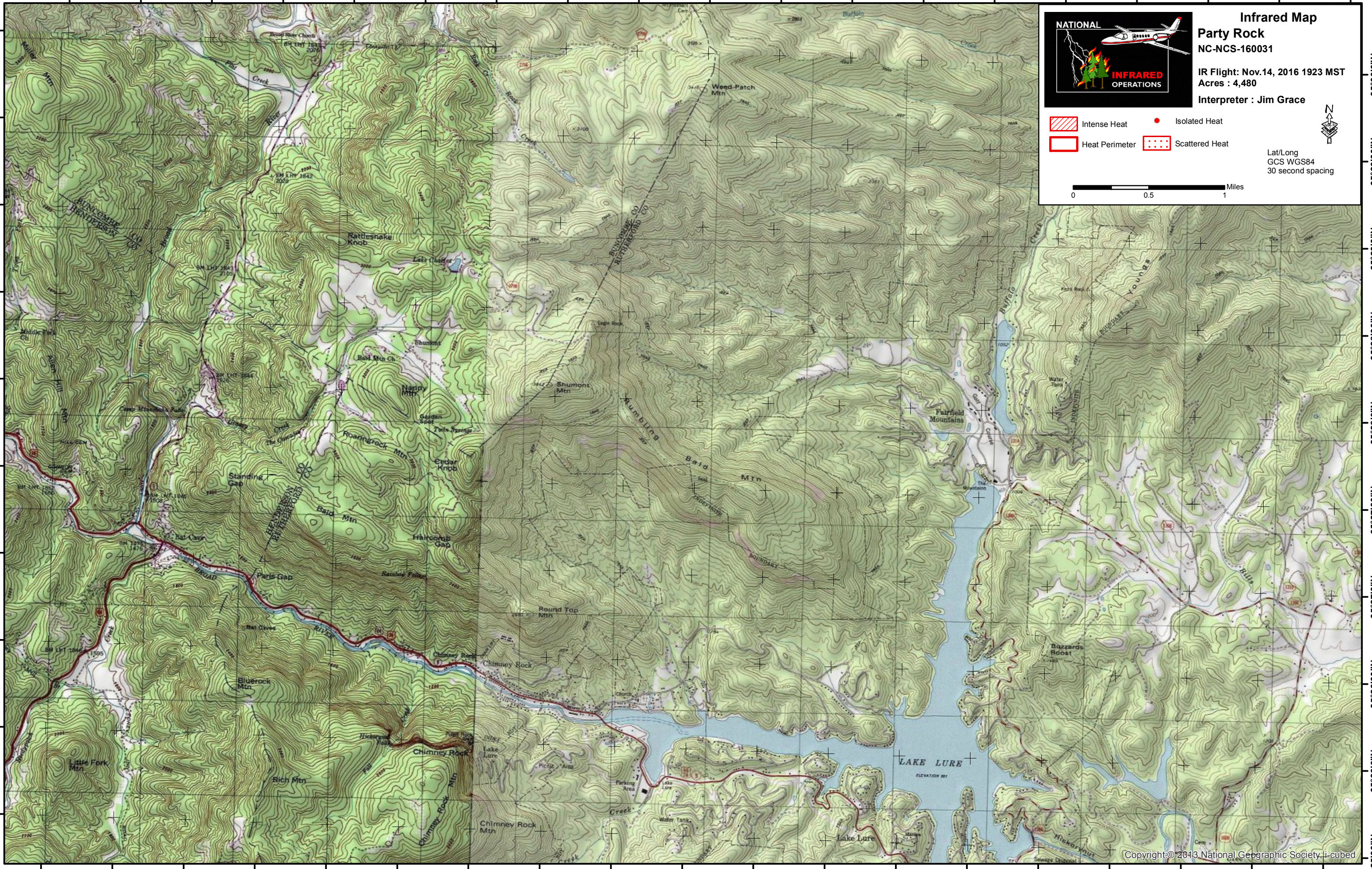


82°18'0"W 82°17'30"W 82°17'0"W 82°16'30"W 82°16'0"W 82°15'30"W 82°15'0"W 82°14'30"W 82°14'0"W 82°13'30"W 82°13'0"W 82°12'30"W 82°12'0"W 82°11'30"W 82°11'0"W 82°10'30"W 82°10'0"W 82°9'30"W 82°9'0"W

35°30'0"N  
35°29'30"N  
35°29'0"N  
35°28'30"N  
35°28'0"N  
35°27'30"N  
35°27'0"N  
35°26'30"N  
35°26'0"N  
35°25'30"N



**Infrared Map**  
**Party Rock**  
NC-NCS-160031  
IR Flight: Nov.14, 2016 1923 MST  
Acres : 4,480  
Interpreter : Jim Grace

- Intense Heat
- Isolated Heat
- Heat Perimeter
- Scattered Heat



Lat/Long  
GCS WGS84  
30 second spacing

