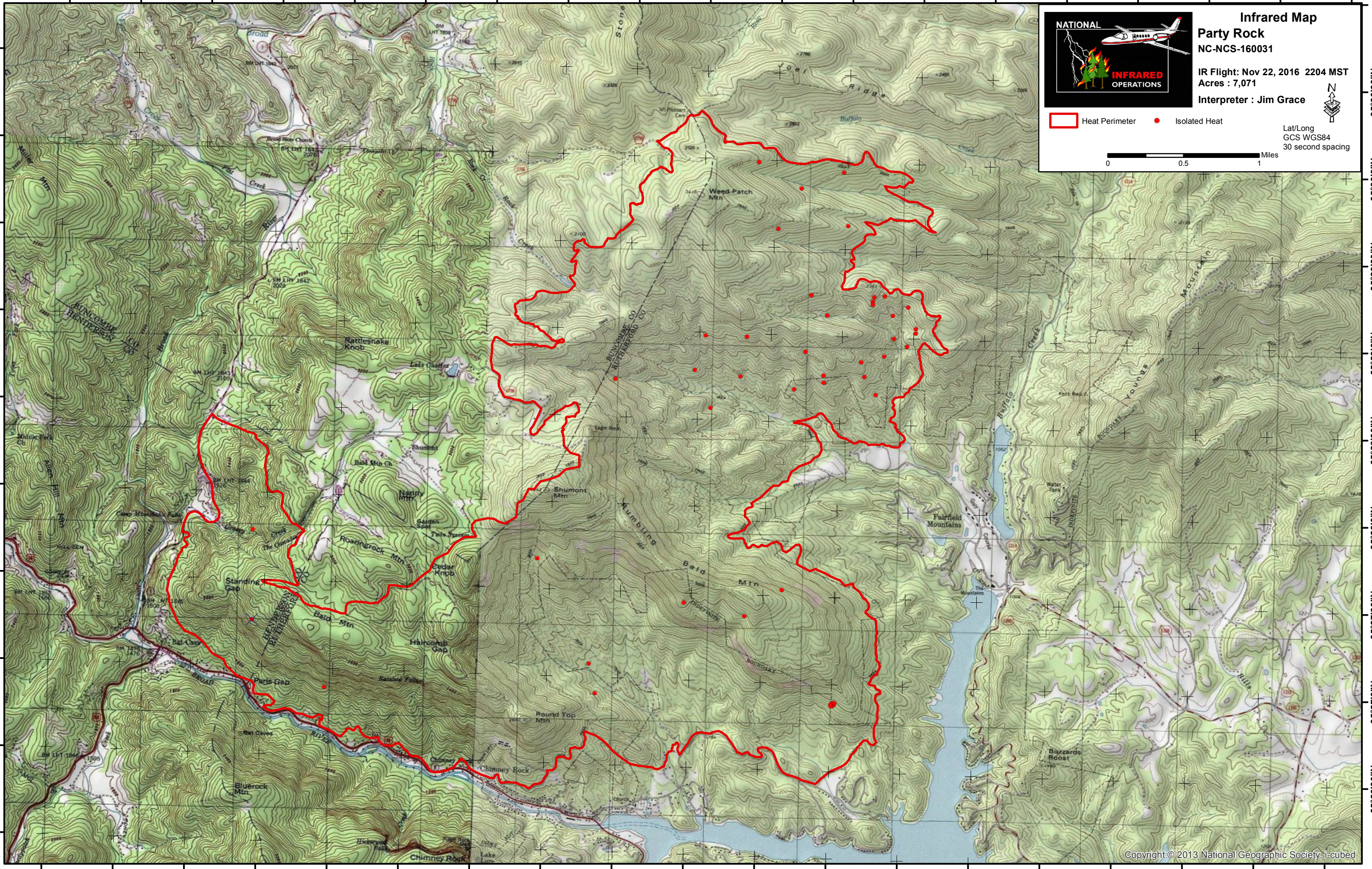


82°18'0"W 82°17'30"W 82°17'0"W 82°16'30"W 82°16'0"W 82°15'30"W 82°15'0"W 82°14'30"W 82°14'0"W 82°13'30"W 82°13'0"W 82°12'30"W 82°12'0"W 82°11'30"W 82°11'0"W 82°10'30"W 82°10'0"W 82°9'30"W 82°9'0"W

35°30'30"N
35°30'0"N
35°29'30"N
35°29'0"N
35°28'30"N
35°28'0"N
35°27'30"N
35°27'0"N
35°26'30"N
35°26'0"N



NATIONAL INFRARED OPERATIONS

Infrared Map
Party Rock
 NC-NCS-160031

IR Flight: Nov 22, 2016 2204 MST
 Acres : 7,071
 Interpreter : Jim Grace

Heat Perimeter (red line)
 Isolated Heat (red dot)

Lat/Long
 GCS WGS84
 30 second spacing

0 0.5 1 Miles

35°30'30"N
35°30'0"N
35°29'30"N
35°29'0"N
35°28'30"N
35°28'0"N
35°27'30"N
35°27'0"N
35°26'30"N
35°26'0"N

82°18'0"W 82°17'30"W 82°17'0"W 82°16'30"W 82°16'0"W 82°15'30"W 82°15'0"W 82°14'30"W 82°14'0"W 82°13'30"W 82°13'0"W 82°12'30"W 82°12'0"W 82°11'30"W 82°11'0"W 82°10'30"W 82°10'0"W 82°9'30"W 82°9'0"W