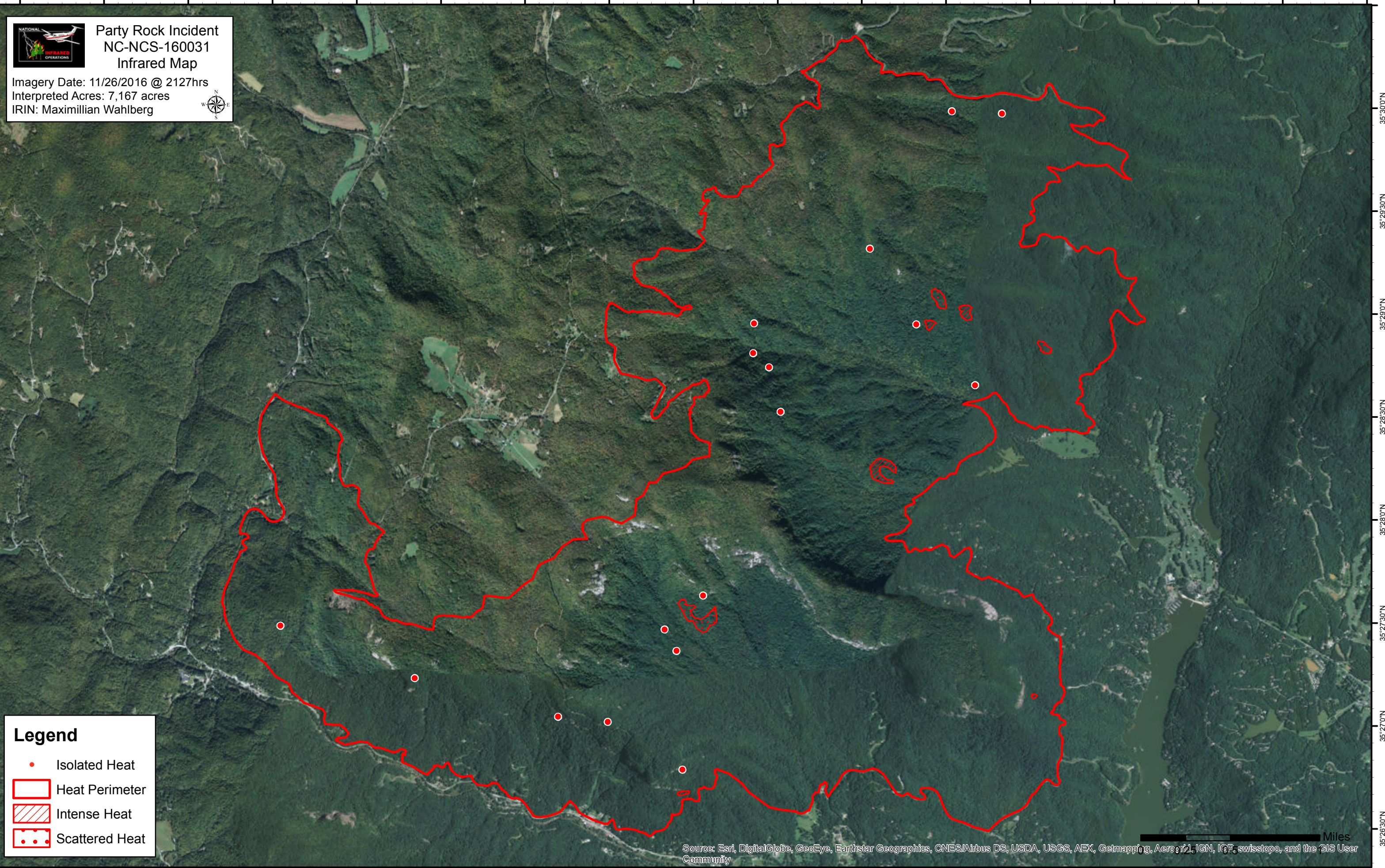


82°18'30"W 82°18'0"W 82°17'30"W 82°17'0"W 82°16'30"W 82°16'0"W 82°15'30"W 82°15'0"W 82°14'30"W 82°14'0"W 82°13'30"W 82°13'0"W 82°12'30"W 82°12'0"W 82°11'30"W 82°11'0"W 82°10'30"W



# Party Rock Incident NC-NCS-160031 Infrared Map

Imagery Date: 11/26/2016 @ 2127hrs  
Interpreted Acres: 7,167 acres  
IRIN: Maximillian Wahlberg



**Legend**

- Isolated Heat
- Heat Perimeter
- Intense Heat
- Scattered Heat

Source: Esri, DigitalGlobe, GeoEye, Earthstar Geographics, CNES/Airbus DS, USDA, USGS, AEX, Getmapping, Aerogrid, IGN, IGP, swisstopo, and the GIS User Community

Miles

82°18'0"W 82°17'30"W 82°17'0"W 82°16'30"W 82°16'0"W 82°15'30"W 82°15'0"W 82°14'30"W 82°14'0"W 82°13'30"W 82°13'0"W 82°12'30"W 82°12'0"W 82°11'30"W 82°11'0"W 82°10'30"W