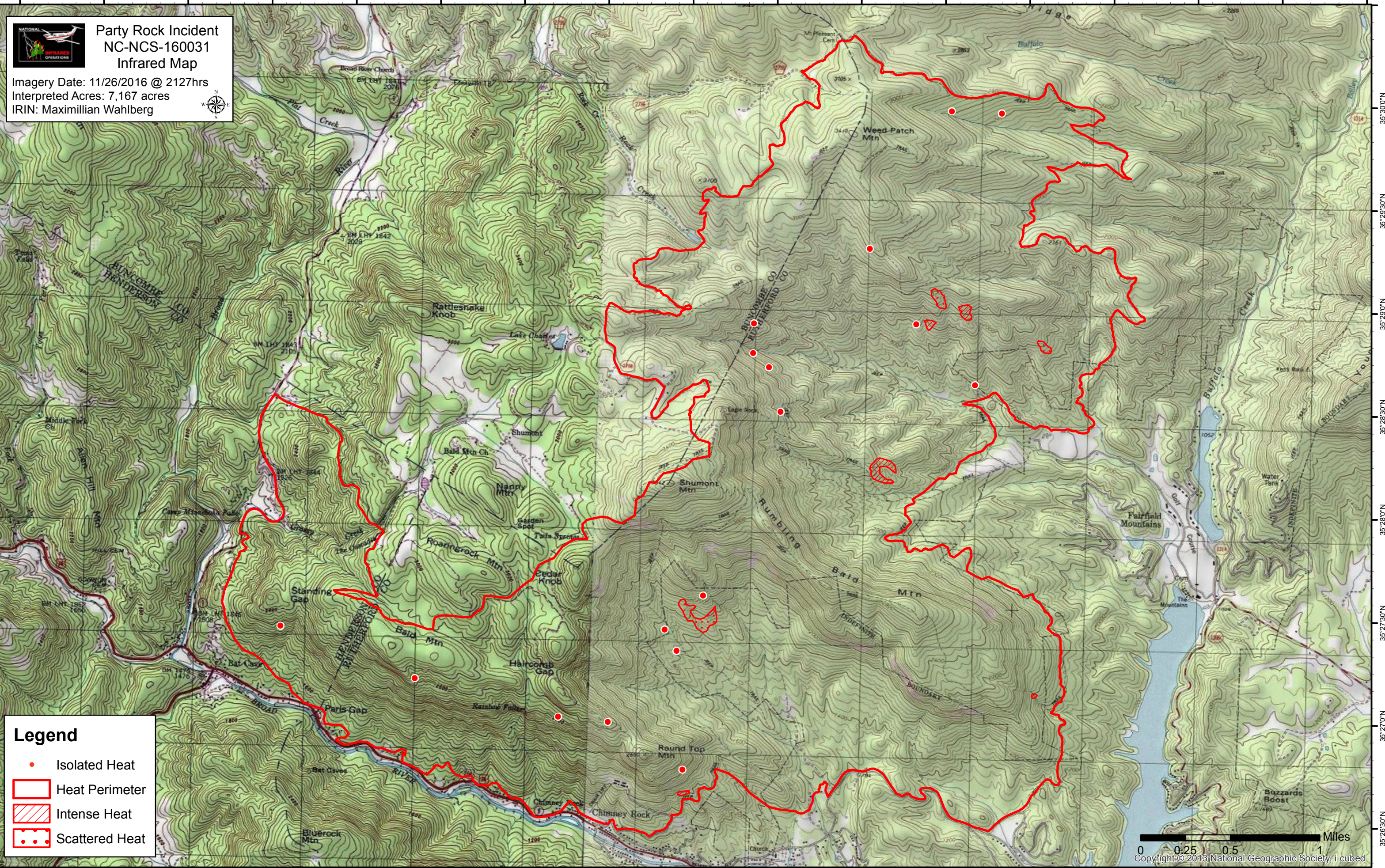







82°18'30"W 82°18'0"W 82°17'30"W 82°17'0"W 82°16'30"W 82°16'0"W 82°15'30"W 82°15'0"W 82°14'30"W 82°14'0"W 82°13'30"W 82°13'0"W 82°12'30"W 82°12'0"W 82°11'30"W 82°11'0"W 82°10'30"W



 Party Rock Incident  
NC-NCS-160031  
Infrared Map  
Imagery Date: 11/26/2016 @ 2127hrs  
Interpreted Acres: 7,167 acres  
IRIN: Maximillian Wahlberg



**Legend**

-  Isolated Heat
-  Heat Perimeter
-  Intense Heat
-  Scattered Heat

0 0.25 0.5 1 Miles  
Copyright © 2013 National Geographic Society, i-cubed

82°18'0"W 82°17'30"W 82°17'0"W 82°16'30"W 82°16'0"W 82°15'30"W 82°15'0"W 82°14'30"W 82°14'0"W 82°13'30"W 82°13'0"W 82°12'30"W 82°12'0"W 82°11'30"W 82°11'0"W 82°10'30"W

35°30'0"N  
35°29'30"N  
35°29'0"N  
35°28'30"N  
35°28'0"N  
35°27'30"N  
35°27'0"N  
35°26'30"N

35°30'0"N  
35°29'30"N  
35°29'0"N  
35°28'30"N  
35°28'0"N  
35°27'30"N  
35°27'0"N  
35°26'30"N