



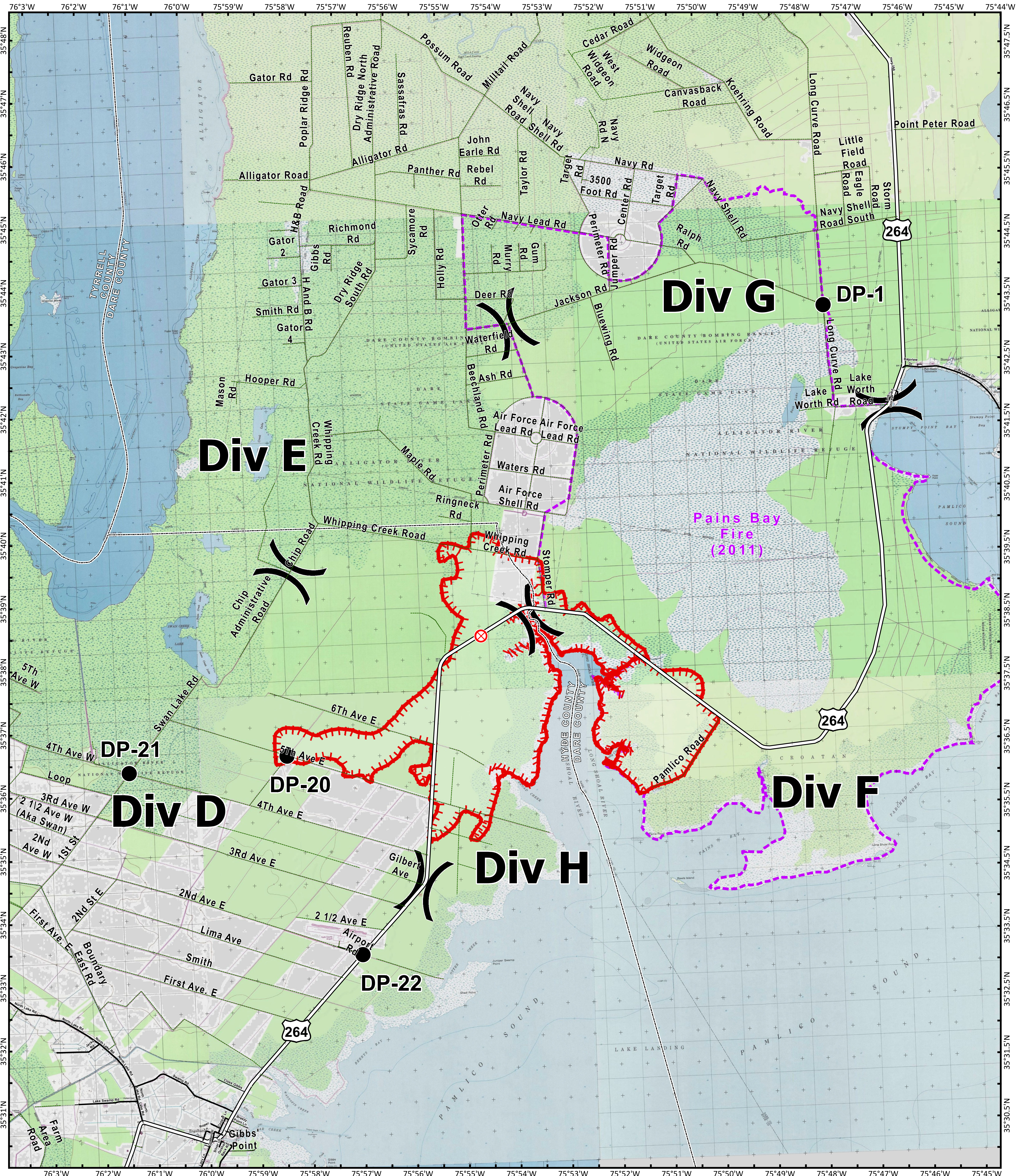
# Briefing Map

# Whipping Creek Road Fire

NC-NCS-160150  
Approximate Acres: 10,036



April 22, 2016  
Day Shift

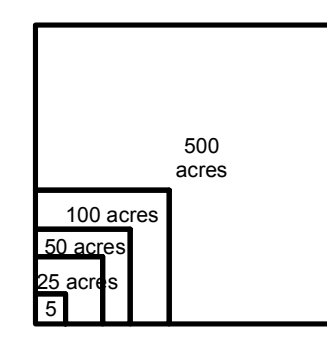


- Division
- Fire Origin
- Drop Point
- Uncontrolled Fire Edge
- Pains Bay Fire (2011)



Download a GeoPDF

To use a GeoPDF, install PDF Maps App by Avenza available for: Apple, Android, & Windows mobile devices.



Perimeters shown are based on the best available information at the time of map production. Latest intel: 4/21/2016 @ 1930

20160421 @ 2200  
Map Datum: NAD83 Feet  
Author: D. Jones, GISS