



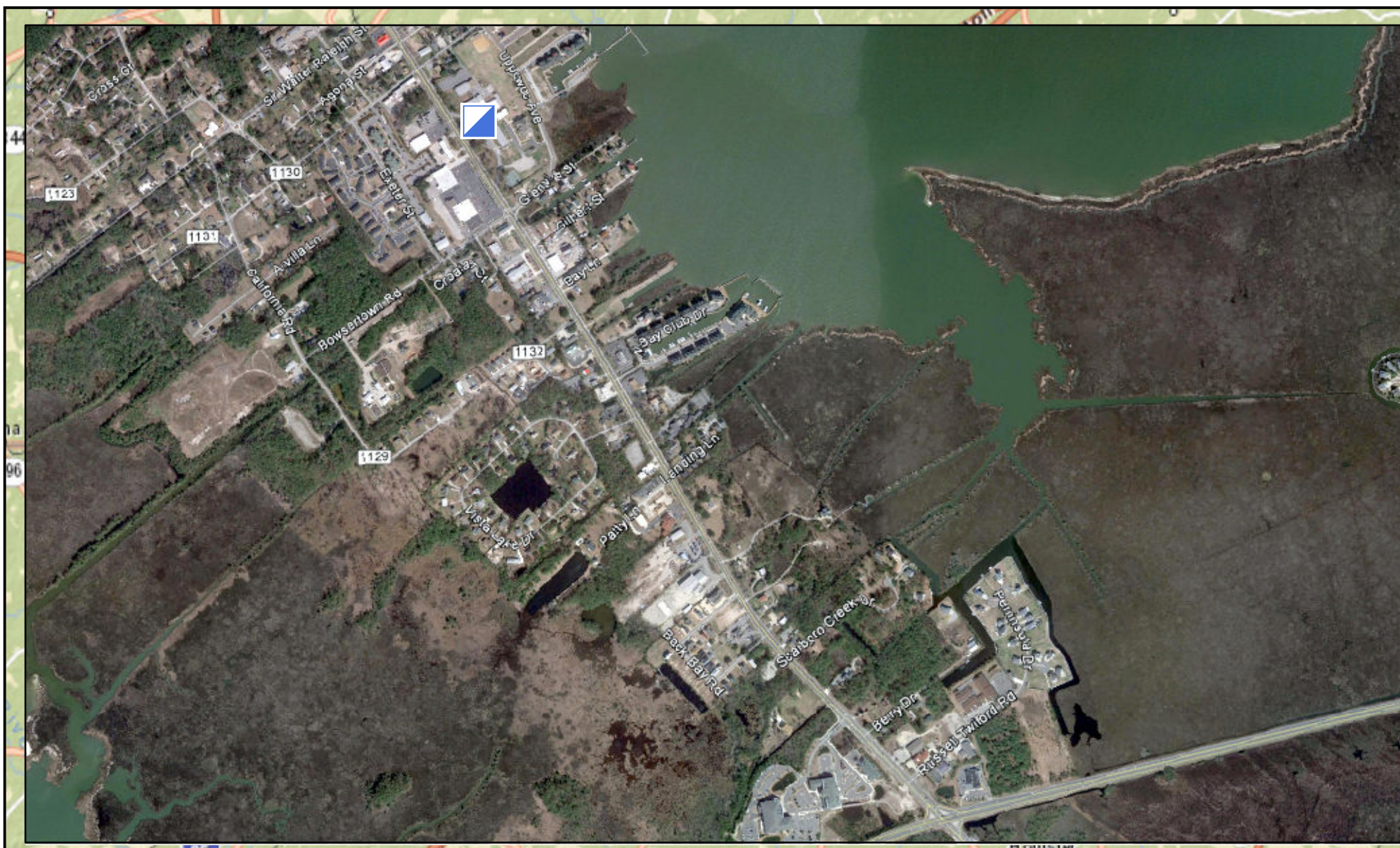
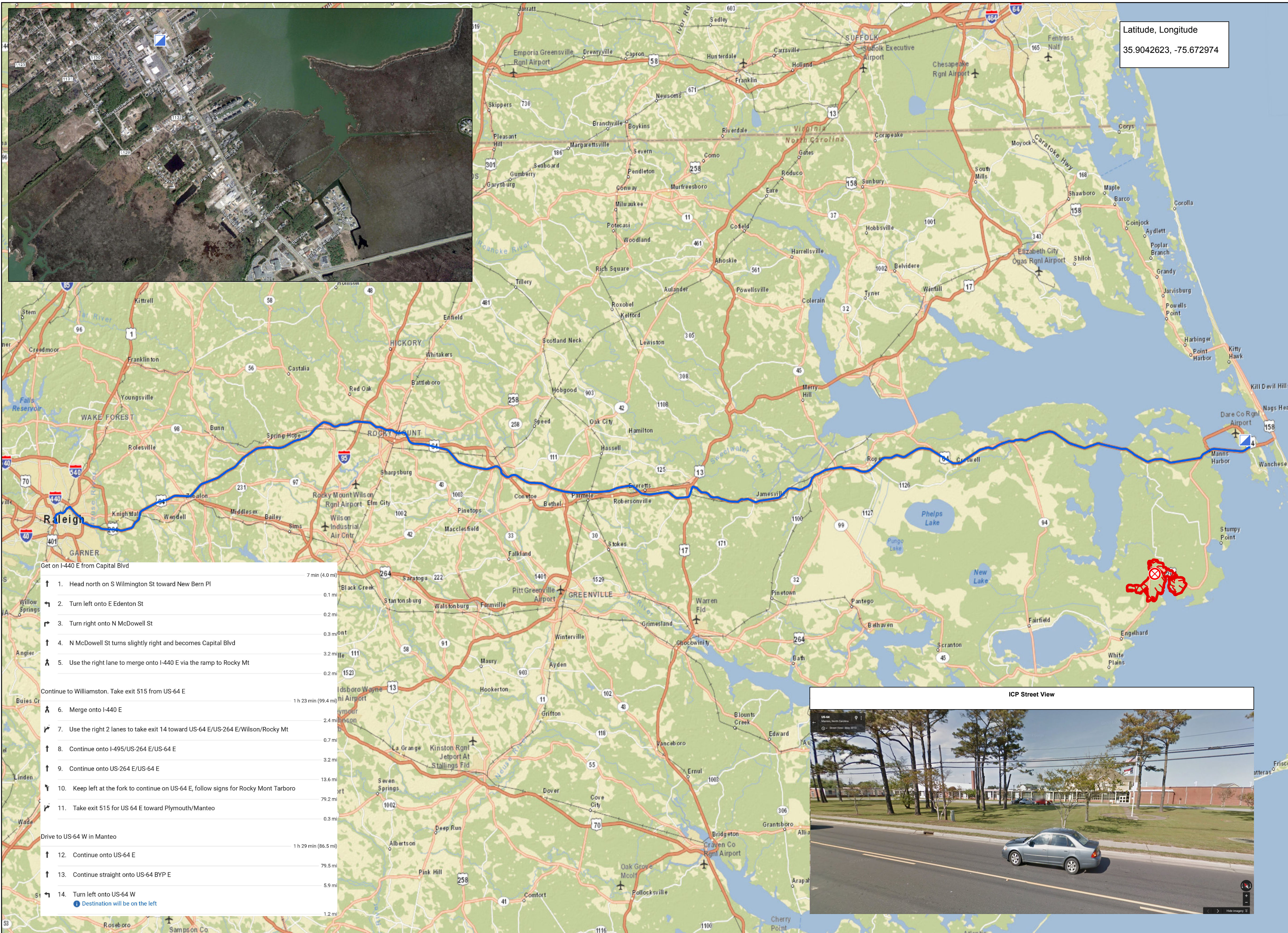
ICP Travel Map



Whipping Creek Road Fire

NC-NCS-160150

Latitude, Longitude
35.9042623, -75.672974



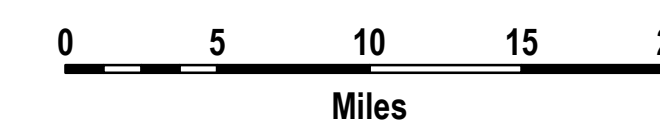
- Get on I-440 E from Capital Blvd
- ↑ 1. Head north on S Wilmington St toward New Bern Pl 7 min (4.0 mi)
 - ↶ 2. Turn left onto E Edenton St 0.1 mi
 - ↷ 3. Turn right onto N McDowell St 0.2 mi
 - ↑ 4. N McDowell St turns slightly right and becomes Capital Blvd 0.3 mi
 - ↑ 5. Use the right lane to merge onto I-440 E via the ramp to Rocky Mt 3.2 mi
- Continue to Williamston. Take exit 515 from US-64 E
- ↑ 6. Merge onto I-440 E 0.2 mi
 - ↷ 7. Use the right 2 lanes to take exit 14 toward US-64 E/US-264 E/Wilson/Rocky Mt 1 h 23 min (99.4 mi)
 - ↑ 8. Continue onto I-495/US-264 E/US-64 E 2.4 mi
 - ↑ 9. Continue onto US-264 E/US-64 E 0.7 mi
 - ↶ 10. Keep left at the fork to continue on US-64 E, follow signs for Rocky Mt Tarboro 13.6 mi
 - ↷ 11. Take exit 515 for US 64 E toward Plymouth/Manteo 79.2 mi
- Drive to US-64 W in Manteo
- ↑ 12. Continue onto US-64 E 0.3 mi
 - ↑ 13. Continue straight onto US-64 BYP E 1 h 29 min (86.5 mi)
 - ↶ 14. Turn left onto US-64 W 79.5 mi
- Destination will be on the left

- Route to ICP from Raleigh Area
- Fire Origin
- Incident Command Post
- Fire Perimeter



Download a GeoPDF

To use a GeoPDF,
install PDF Maps App
by Avenza available for:
Apple,
Android, &
Windows
mobile devices.



Perimeters shown are based on the best available information at the time of map production.
Latest intel: 4/21/2016 @ 1930

