



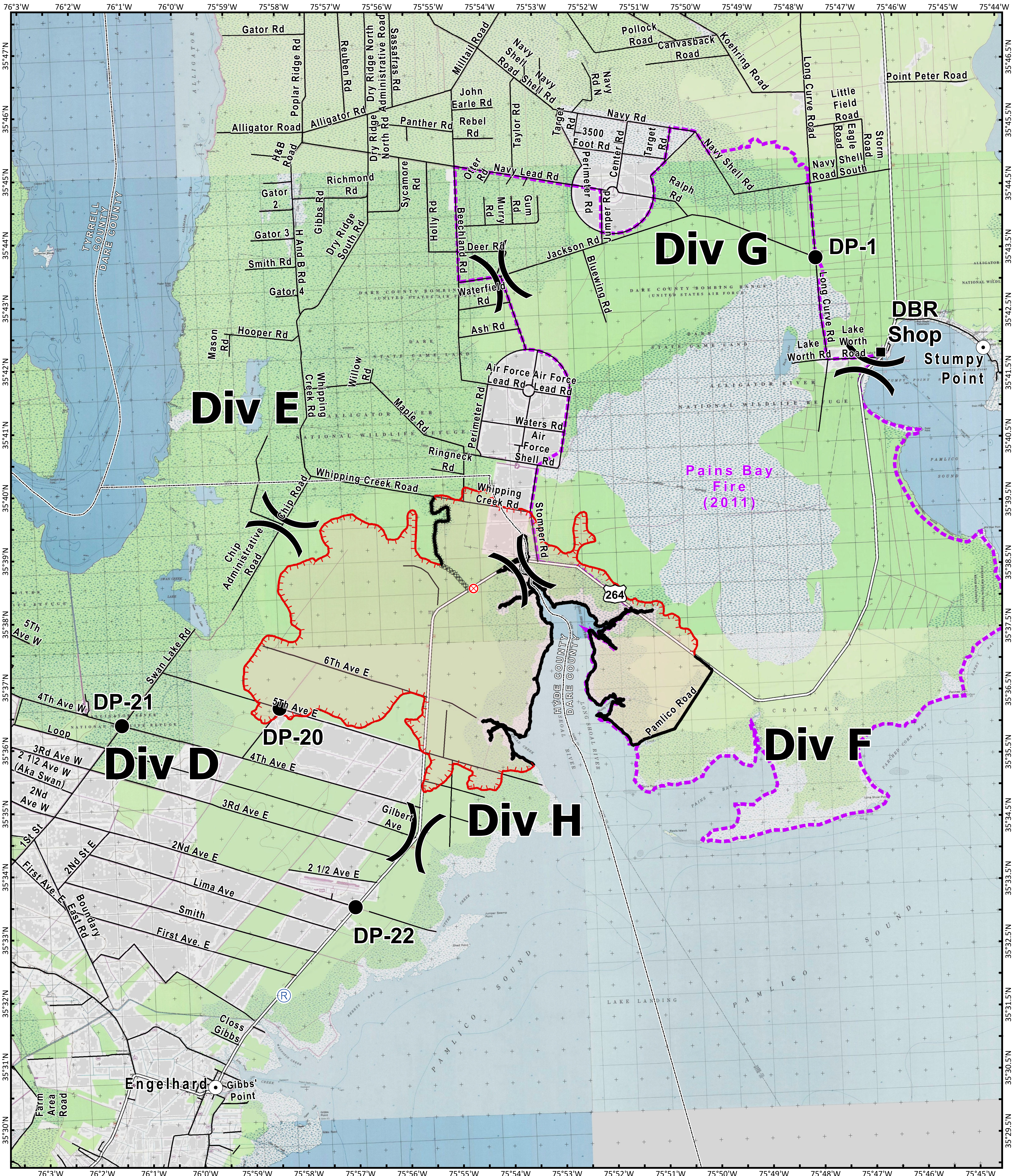
Briefing Map

Whipping Creek Road Fire

NC-NCS-160150
Approximate Acres: 15,449



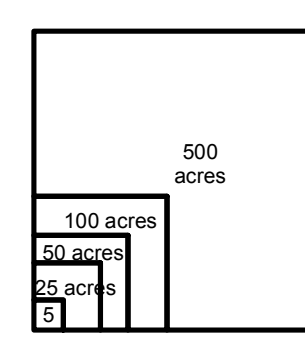
April 25, 2016
Day Shift



- Division
- Drop Point
- Completed Dozer Line
- Repeater
- Fire Origin
- Uncontrolled Fire Edge
- Completed Line
- Pains Bay Fire (2011)



To use a GeoPDF, install PDF Maps App by Avenza available for: Apple, Android, & Windows mobile devices.



Perimeters shown are based on the best available information at the time of map production. Latest intel: 20160424 @ 1330

20160424 @ 2030
Map Datum: NAD83 Feet
Author: D. Jones, GISS

