



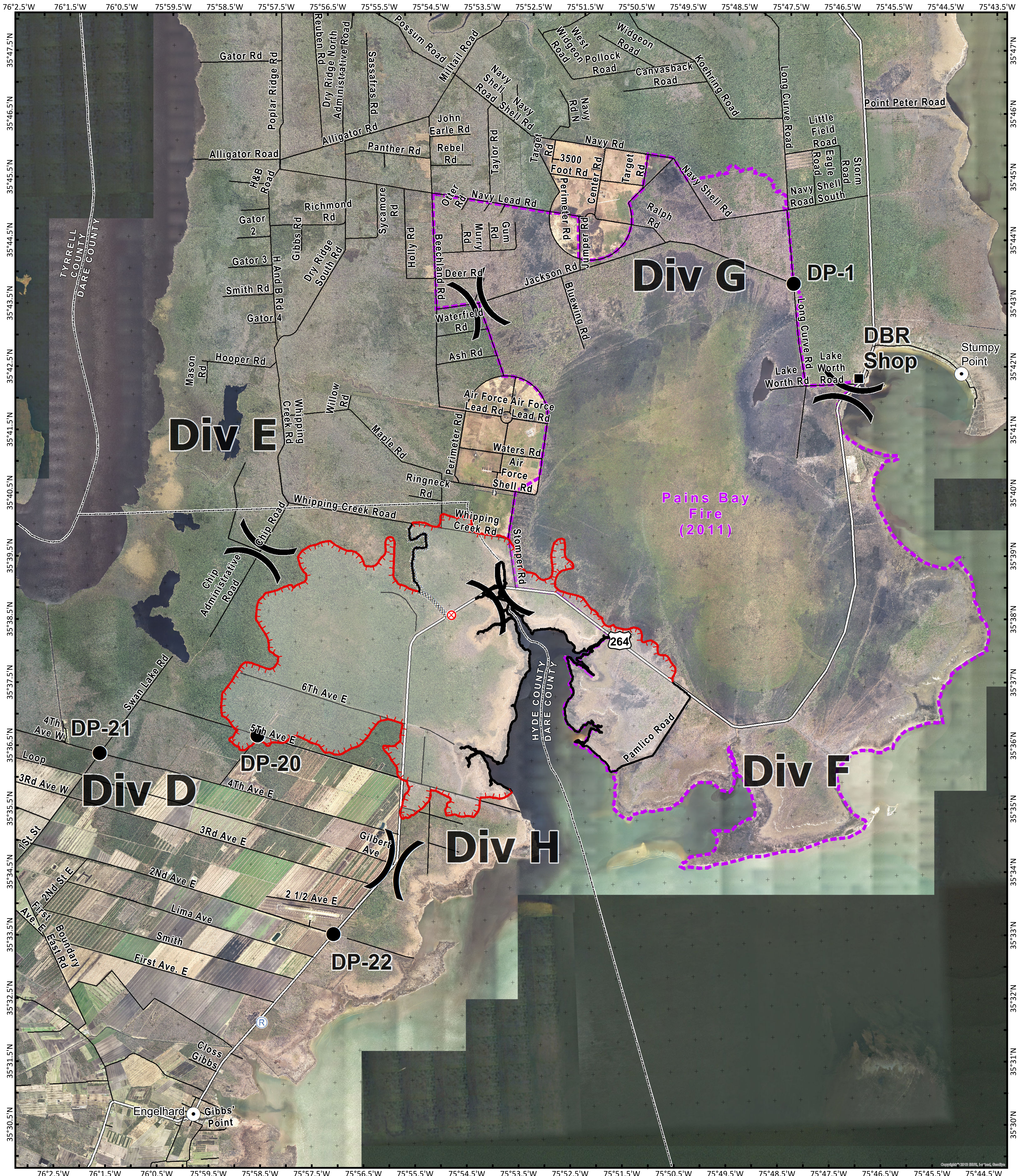
Operations Aerial Map

Whipping Creek Road Fire

NC-NCS-160150
Approximate Acres: 15,449



April 25, 2016
Day Shift



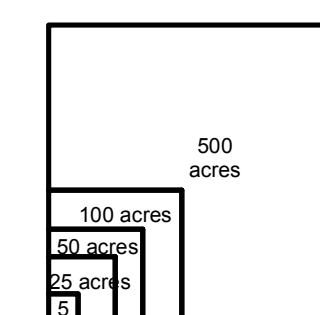
- Division
- Drop Point
- Completed Dozer Line
- Fire Origin
- Uncontrolled Fire Edge
- Completed Line

Pains Bay Fire (2011)



Download a GeoPDF

To use a GeoPDF, install PDF Maps App by Avenza available for: Apple, Android, & Windows mobile devices.



Perimeters shown are based on the best available information at the time of map production.
Latest intel: 20160424 @ 1330

20160424 @ 2030
Map Datum: NAD83 Feet
Author: D. Jones, GIS

0 3,000 6,000 9,000 12,000 15,000 18,000 21,000 24,000 Feet