



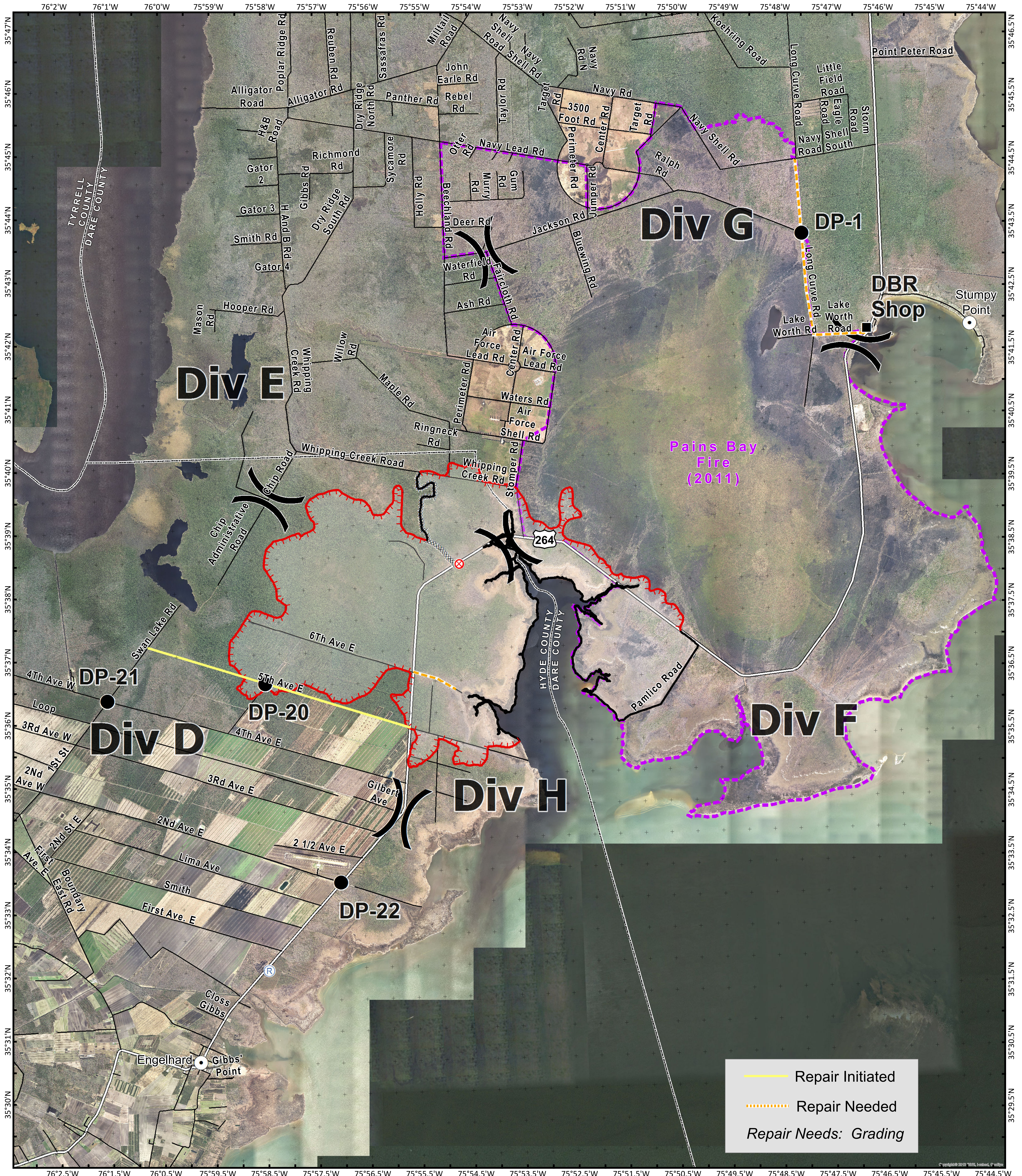
Suppression Repair Map

Whipping Creek Road Fire

NC-NCS-160150
Approximate Acres: 15,449



April 25, 2016
Day Shift



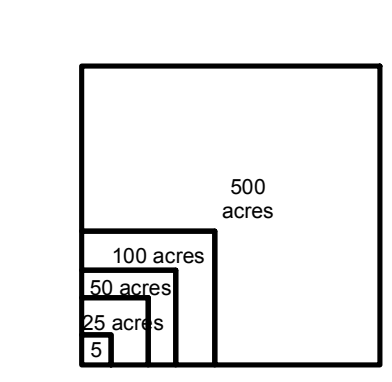
Repair Initiated
Repair Needed
Repair Needs: Grading

- Division
- Drop Point
- Completed Dozer Line
- Fire Origin
- Uncontrolled Fire Edge
- Completed Line

Pains Bay Fire (2011)



To use a GeoPDF, install PDF Maps App by Avenza available for Apple, Android, & Windows mobile devices.



Perimeters shown are based on the best available information at the time of map production. Latest intel: 20160424 @ 1330
20160424 @ 2100
Map Datum: NAD83 Feet
Author: M. Sweat, GISS