



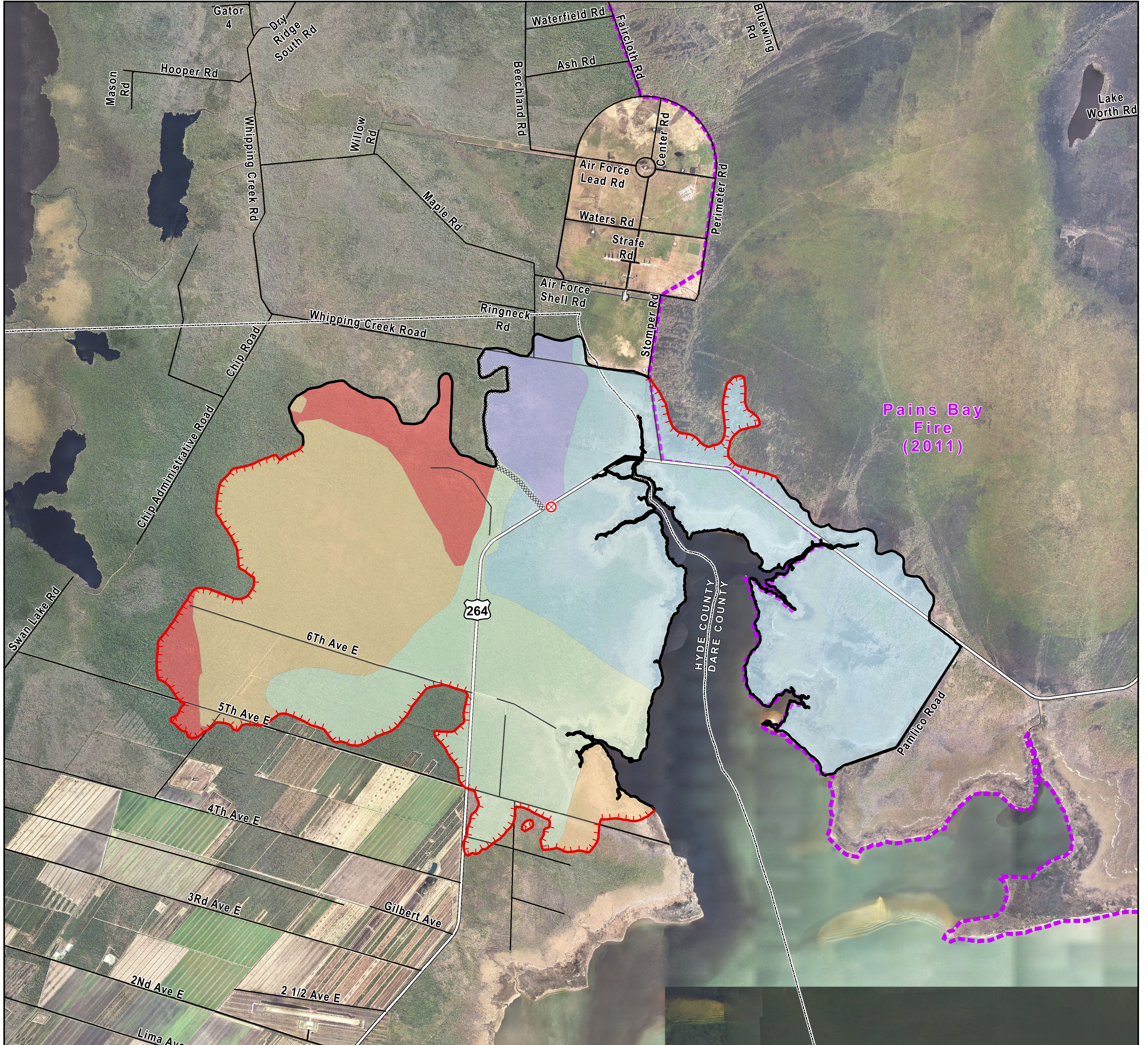
Progression Map

Whipping Creek Road Fire

NC-NCS-160150
Approximate Acres: 15,453



April 27, 2016



	<u>Day 1</u>	<u>Day 2</u>	<u>Day 3</u>	<u>Day 4</u>	<u>Day 5</u>
	20160418 @ 2400	20160419 @ 2100	20160420 @ 1930	20160421 @ 2000	20160422 @ 2000
Fire Area:	851	6,876	10,274	14,261	15,453
Fire Growth:	851	6,025	3,398	3,987	1,192
<i>(Units: Acres)</i>					

- Fire Origin
- Uncontrolled Fire Edge
- Completed Dozer Line
- Completed Line
- Pains Bay Fire (2011)

Download a GeoPDF

To use a GeoPDF, install PDF Maps App by Avenza available for:
Apple, Android, & Windows mobile devices.

Perimeters shown are based on the best available information at the time of map production.
Latest intel: 20160426 @ 1700

20160426 @ 2145
Map Datum: NAD83 Feet
Author: D. Jones, GISS