



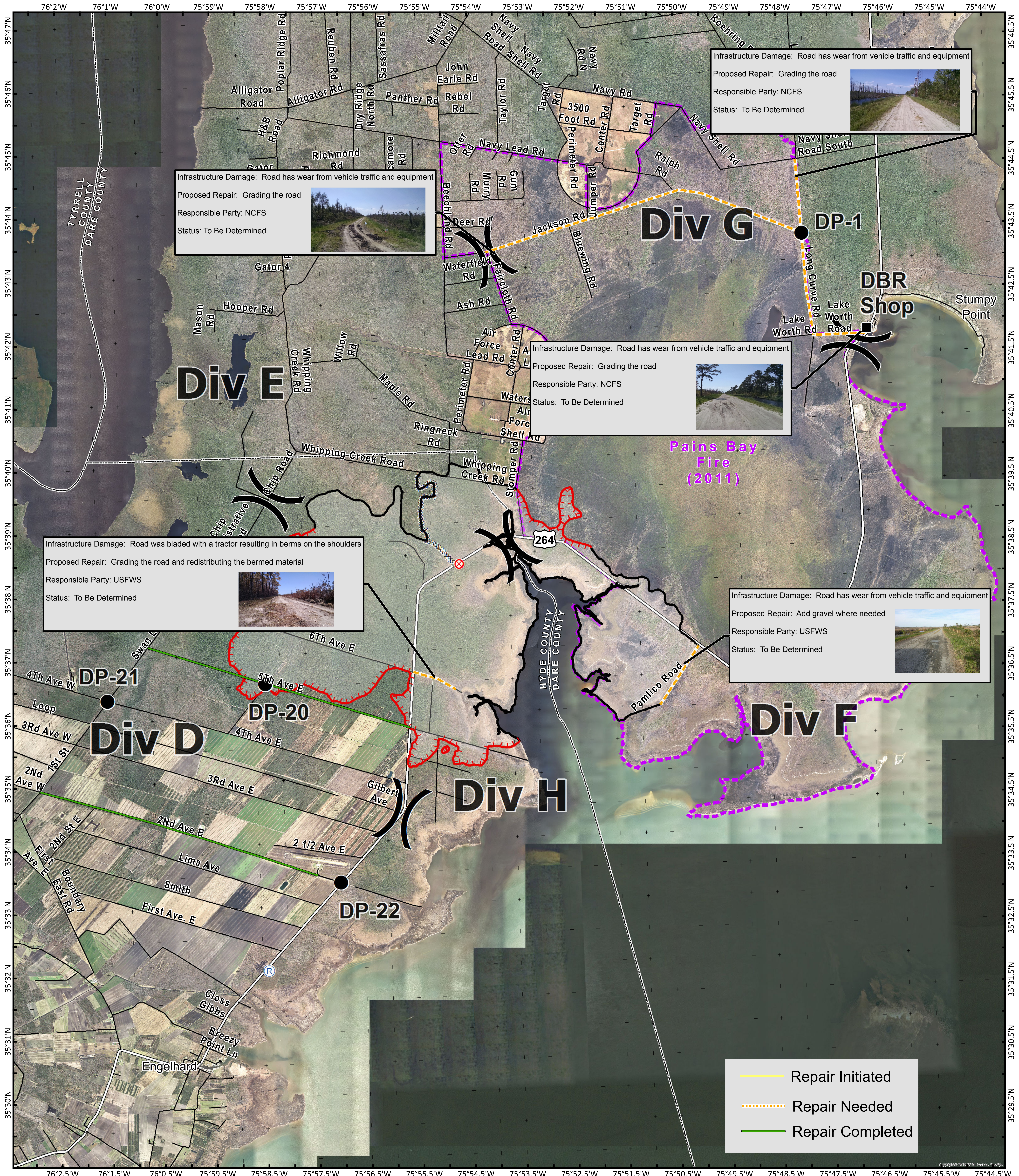
Suppression Repair Map

Whipping Creek Road Fire

NC-NCS-160150
Approximate Acres: 15,453



April 27, 2016
Day Shift



Infrastructure Damage: Road has wear from vehicle traffic and equipment
Proposed Repair: Grading the road
Responsible Party: NCFS
Status: To Be Determined

Infrastructure Damage: Road has wear from vehicle traffic and equipment
Proposed Repair: Grading the road
Responsible Party: NCFS
Status: To Be Determined

Infrastructure Damage: Road has wear from vehicle traffic and equipment
Proposed Repair: Grading the road
Responsible Party: NCFS
Status: To Be Determined

Infrastructure Damage: Road was bladed with a tractor resulting in berms on the shoulders
Proposed Repair: Grading the road and redistributing the bermed material
Responsible Party: USFWS
Status: To Be Determined

Infrastructure Damage: Road has wear from vehicle traffic and equipment
Proposed Repair: Add gravel where needed
Responsible Party: USFWS
Status: To Be Determined

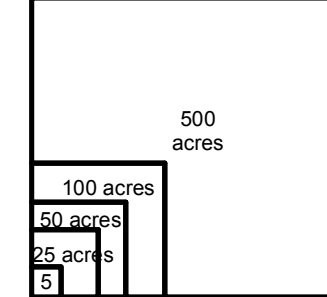
Repair Initiated
Repair Needed
Repair Completed

Division ● Drop Point
Fire Origin Uncontrolled Fire Edge Completed Dozer Line Completed Line

Pains Bay Fire (2011)



To use a GeoPDF, install PDF Maps App by Avenza available for Apple, Android, & Windows mobile devices.



Perimeters shown are based on the best available information at the time of map production. Latest intel: 20160426 @ 1700

20160426 @ 2100
Map Datum: NAD83 Feet
Author: M. Sweat, GISS