

DOBSON KNOB FIRE

NC-NCS-170029
MCDOWELL COUNTY
District 1



KeeP Informed on Fire Weather
Conditions and Forecasts.

April 12, 2017
Wednesday
Operational Period 0800-2000 hrs.




INCIDENT OBJECTIVES	1. INCIDENT NAME Dobson Knob	2. DATE PREPARED 4/11/2017	3. TIME PREPARED 2100									
4. OPERATIONAL PERIOD (DATE/TIME) April 12, 2017 0800-2000												
5. GENERAL CONTROL OBJECTIVES FOR THE INCIDENT (INCLUDE ALTERNATIVES) <u>Control Objectives</u> 1) Providing for the safety of the general public and firefighters through: <ul style="list-style-type: none"> - Adherence to The 10 standard fire orders, - Mitigate the 18 situations that shout watch-out, - Implement and maintain LCES - Conduct frequent Risk Assessments - Maintaining a 2/1 work rest ratio. 2) Contain the Fire: <ul style="list-style-type: none"> - North of the Mountain to Sea Trail - West of State Road 105 - South of the Over Mountain Victory Trail - East of US 221 3) Coordinate with McDowell County Emergency Management and Volunteer Fire Departments to provide Structure Protection as the fire progresses West and North and threatens additional private lands <u>Management Objectives</u> 1) Keep the general public and local officials, as well as incident stakeholders informed of fire status through timely situation updates and personal contacts. 2) Provide accurate cost accounting and documentation of the incident in accordance with the NCFS Incident Business Handbook and USFS Incident Business procedures. 3) Ensure that all trainees receive a quality training assignment												
6. WEATHER FORECAST FOR OPERATIONAL PERIOD Day Shift conditions: Temp 71 RH 46 AM winds NW 5-6 afternoon winds light & variable Night Shift conditions: Temp 51 RH 71 Evening winds light & variable becoming N @ 5												
7. GENERAL SAFETY MESSAGE <ul style="list-style-type: none"> • Drive with headlights on. Drive defensively on curvy roads and trails • Ensure LCES are in place and maintain 10's and 18's • Maintain safe distance when working with heavy equipment • Beware of steep slopes, rough terrain, and cliffs 												
8. ATTACHMENTS (√ IF ATTACHED) <table style="width: 100%; border: none;"> <tr> <td style="width: 33%;"><input checked="" type="checkbox"/> ORGANIZATION LIST (ICS 203)</td> <td style="width: 33%;"><input checked="" type="checkbox"/> MEDICAL PLAN (ICS 206)</td> <td style="width: 33%;"><input checked="" type="checkbox"/> SAFETY MESSAGE</td> </tr> <tr> <td><input checked="" type="checkbox"/> ASSIGNMENT LIST (ICS 204)</td> <td><input checked="" type="checkbox"/> INCIDENT MAP</td> <td><input checked="" type="checkbox"/> PHONE LIST</td> </tr> <tr> <td><input checked="" type="checkbox"/> COMMUNICATIONS PLAN (ICS 205)</td> <td><input type="checkbox"/> TRAVEL MAP</td> <td><input type="checkbox"/></td> </tr> </table>				<input checked="" type="checkbox"/> ORGANIZATION LIST (ICS 203)	<input checked="" type="checkbox"/> MEDICAL PLAN (ICS 206)	<input checked="" type="checkbox"/> SAFETY MESSAGE	<input checked="" type="checkbox"/> ASSIGNMENT LIST (ICS 204)	<input checked="" type="checkbox"/> INCIDENT MAP	<input checked="" type="checkbox"/> PHONE LIST	<input checked="" type="checkbox"/> COMMUNICATIONS PLAN (ICS 205)	<input type="checkbox"/> TRAVEL MAP	<input type="checkbox"/>
<input checked="" type="checkbox"/> ORGANIZATION LIST (ICS 203)	<input checked="" type="checkbox"/> MEDICAL PLAN (ICS 206)	<input checked="" type="checkbox"/> SAFETY MESSAGE										
<input checked="" type="checkbox"/> ASSIGNMENT LIST (ICS 204)	<input checked="" type="checkbox"/> INCIDENT MAP	<input checked="" type="checkbox"/> PHONE LIST										
<input checked="" type="checkbox"/> COMMUNICATIONS PLAN (ICS 205)	<input type="checkbox"/> TRAVEL MAP	<input type="checkbox"/>										
9. PREPARED BY (PLANNING SECTION CHIEF) Don Watson		10. APPROVED BY (INCIDENT COMMANDER) Kevin Harvell										

ORGANIZATION ASSIGNMENT LIST		9. Operations Section	
1. Incident Name Dobson Knob Fire		Field Ops	Jeff Burns / Glen Coley (T)
		Planning Ops	Derrick Moore
		a. Branch I	
2. Date April 11, 2017 3. Time 1800		Branch Director	
4. Operational Period April 12, 2017 0800-2000		Division/Group	C Lee Wicker / Dwayne Vigil
5. Command and General Staff		Division/Group	J Keith Suttles / Aaron Gay
		Division/Group	S G. Brown / Kate Airhart (T)
Incident Commander	Kevin Harvell	Division/Group	Z George Brown
Safety Officers	Jeff Marshburn	Division/Group	Night Shift unstaffed
	Joe Jones	b. Branch II	
Information Officers	Bill Swartley Bruce MacDonald	Branch Director	
		Division/Group	
		Division/Group	
		Division/Group	
Liaison Officers			
6. Agency Representatives		c. Branch III	
McDowell Co. EM	William Kehler	Branch Director	
McDowell Co. EM	Craig Walker	Division/Group	
McDowell EM Logistics	Steve Hancock	Division/Group	
NCFS AA	Greg Smith	Division/Group	
USFS AA	Jake Lubera	Division/Group	
USFS Rep	Greg Philipp	Division/Group	
		Division/Group	
		d. Branch IV	
		Branch Director	
		Division/Group	
7. Planning Section		Division/Group	
Chief	Don Watson	Division/Group	
Deputy		Division/Group	
Resources Unit	Dennis Register	e. Other Groups	
Situation Unit	Caleb Jones (T)	Structure Protection Group	Jeremy Callicutt
Documentation	Jim Slye	Water Handling Group	
Field Observers	Phil Wallace James Caddy Nicole Deweese (T)	Staging	
Demob Unit	Bill Pickens	f. Air Operations Branch	
Fire Behavior Analyst	John Cook	Air Ops Branch Director	
Status Check-in	Austin Harriett	Air Attack Supervisor	
GIS	David Jones Richard Cockerham	Air Support Supervisor	
		Helibase Managers	
8. Logistics Section		10. Finance Section	
Chief	Travis Ruff	Chief	Beth Plummer
Deputy		Deputy	
Supply Unit	Keith Walters	Procurement Unit	
Facilities Unit	Derek Risen	Time Unit	Amanda Hubbard
Ground Support Unit	Jerol Berry	Cost Unit	Chasity Webb
Communications Unit	Jimmy Meadows	Equipment Time Recorder	
Equipment Manager	Danny Carswell	Personel Time Recorder	
Ordering Manager	Patrick Raynor	Computer Specialist	Tim Sarlopus
Food Unit	Estella Burleson	Incident Business Advisor	
Medical Unit		Prepared by (Resource Unit Leader) Dennis Register	
Branch EMT			
Receiving & Dist	Joe Shoupe		
Mechanics			

HEALTH AND SAFETY MESSAGE

SAFETY starts with *YOU*

We are ALL accountable for SAFE behaviors

INCIDENT: Dobson Knob Fire	DATE: 4/12/17	TIME: 0800-2000
<p>Major Hazards and Risks:</p> <p>STEEP TERRAIN - Rock faces are “VERY DANGEROUS” throughout these areas! There is no reason to approach rock faces due to fall hazard. Maintain communication with all crew members at all times; Watch footing and maintain your spacing. Refer to IRPG pg 3-4.</p> <p>INDIRECT FIRELINE- Use indirect attack; burnout as possible. Refer to IRPG pg 6.</p> <p>ESCAPE ROUTES & SAFETY ZONES - LCES, ESTABLISH and IDENTIFY safety zones and escape routes. Know where these are located and the route to them. IRPG pg 7.</p> <p>UNBURNED AREA/ REBURN POTENTIAL - LCES; utilize Air Attack if available. Know predicted weather and fire behavior; post lookouts as needed.</p> <p>SNAGS - Hazard trees, both dead snags and live green trees, are one of the most common risks encountered on the fireline. All firefighters should frequently survey their work area for potential hazards. Refer to pages 22-23 in the IRPG Guide.</p> <p>EXTREME CONDITION - LCES; establish trigger points; maintain situational awareness; establish lookouts as needed.</p> <p>FIRE BEHAVIOR - Maintain situational awareness, follow 10 Standard Orders, recognize / mitigate the 18 Watch Out Situations, and apply LCES. Know the fire weather forecast. Monitor conditions.</p> <p>COMMUNICATIONS - There are several different radios and frequencies being used on the incident. Make sure your radio is programmed correctly. Check the Divisional Assignments Page for your correct operational channel.</p> <p><i>Accidents: Contact your supervisor and inform him/her. Follow emergency procedures at bottom of medical plan.</i></p>		
<p>***Conduct Tailgate Safety Briefings <u>Briefing Checklist Inside Back Cover of I.R.P.G.</u></p>		
 <p>Post Lookouts When there is Possible Danger.</p>	<p>Mitigate or Change Tactics When Faced With:</p> <ul style="list-style-type: none">⇒ Indirect Fireline⇒ Lack of Anchor Points⇒ Frontal Assault⇒ High or Extreme Wind Conditions⇒ Reburn Potential⇒ Presence of Hazardous Materials⇒ Lack of Communications With All Forces⇒ Structural Protection⇒ Spotting Becomes Common⇒ Fatigued Crews⇒ Re-ignition Becoming Common	

Safety Officers: Jeff Marshburn- SOF2, Joe Jones- SOF2

FIRE BEHAVIOR FORECAST

FORECAST NUMBER: 1	TYPE OF FIRE: Wildfire
FIRE NAME: Dobson Knob Fire	OPERATIONAL PERIOD: 4/12/2017 Day
DATE ISSUED: 14/11/2017	TIME ISSUED: 1900
UNIT: USFS Grandfather District	Signed: John Cook FBAN <i>John Cook</i>

WEATHER SUMMARY: Cooler with increased cloud cover. Moderately unstable atmosphere.

Max Temp: 70° **Min RH:** 46% (+26) **Winds (20'):** NW4-6G **Sky Cover:** Mostly Cloudy
Mixing Height: 4,200' **Ventilation Index:** 50,000 **ADI (1-100):** 52 good **Fuel Shading:** 20% **Slope:** 20%

FIRE BEHAVIOR

FUELS: The predominant fuel types in the Dobson Knob Fire areas include hardwood leaf litter (FBFM 9) intermixed with dead and downed fuels (FBFM 5 and 11 or SB2 - Low Load Blowdown) due to overstory mortality created by pine beetle infestations. Pine ridge stringers are burning easily. Thick areas of Rhododendron (FM5) are present and burn readily in the understory. Both Burning Index and Energy Release Component are below the 90th percentile (based on the Grandfather RAWS) on April 11th.

1 hour fuel moisture: 8% (+3); **10 hour fuel moisture:** 11% (+5); **100 hour fuel moisture:** 13% (-1)
Energy Release Component: 26 (-2) (FM G 90th percentile is 41, 97th percentile is 46)
Burning Index: 33 (-7)
Probability of Ignition: 40% **Forecasted** **KBDI:** 51 (+14)

Expected Fire Behavior:

Timber Litter (FM9): 2' (-1) flame length and Rate of spread 4 ch/hr (same) on a 20% slope
Shrub (FM5): 2' (-1) flame length and Rate of spread 4 ch/hr (same) on a 20% slope

Local Thresholds: (bold are present) **eyelevel winds over 4 mph, RH below 25% and Temp > 60 deg**

SPECIFIC: Shift in wind direction will push different parts of fire line that have not been pushed recently. Fire behavior will be lower than yesterday due to lower RH and increased cloud cover. Wind and slope will align today for increased upslope spread on West facing slopes.

DIV C: NW wind will push active fire and smoke upslope and into the black. ROS 4 ch/hr. Smoke will stay over the division making it hard to detect spot overs and air support less effective.

DIV J: Wind will push across the line increasing spotting potential from yesterday's burnout. Smoke will partly cover the division during today's burnout.

DIV S: Smoke will stay over the division making it hard to detect slop overs and air support less effective.

DIV Z: Smoke will stay over the division making it hard to detect slop overs and air support less effective.

AIR OPERATIONS and SMOKE FORECAST:

Inversion burn off around 0900 and then slowly lifting.

SAFETY

Watch Out #1: Keep informed on fire weather conditions and forecast
Winds are shifting today

Safety Zone Separation Distance from Flame: 20' or 1/10th acre

Spot Forecast for Dobson Knob... / 621 PM EDT Tue Apr 11 2017

DISCUSSION... A weak cold front will pass through the region on Wednesday, producing scattered showers and isolated thunderstorms. High pressure behind the front will keep most of the area dry, however isolated diurnal showers are possible through Saturday. Another weak cold front slowly moves through the region early next week with another round of scattered showers and thunderstorms.

Sky/weather.....Mostly cloudy (70-80 percent)...then becoming mostly sunny (35-45 percent). A chance of showers.

Max temperature.....Around 71.

Min humidity.....46 percent.

Wind (20 ft).....Northwest winds 5 to 6 mph in the morning...becoming light.

Mixing height.....400-1800 ft AGL...increasing to 4900-5800 ft AGL.

Transport winds.....North 6 to 15 mph.

Smoke dispersal.....Poor to good (3100-50300 knot-ft).

LVORI.....4.

ADI.....8...increasing 52 early in the afternoon... decreasing to 40.

Stability class.....3.

Pcpn amount.....0.04 inches.

Ceiling (FT).....4500...increasing to 6000 in the afternoon.

Visibility (SM).....7 until late afternoon.

Sfc pressure (in)...27.89.

TIME (EDT)	6AM	7AM	8AM	9AM	10A	11A	12P	1PM	2PM	3PM	4PM	5PM
Sky (%).....	85	89	92	85	80	73	64	55	46	43	40	38
Weather cov....	CHC	CHC	CHC	CHC	CHC	SCH	SCH	CHC	CHC	SCH	SCH	SCH
Weather type....	RW	RW	RW	RW	RW	RW	RW	RW	RW	RW	RW	RW
Tstm cov.....												
Temp.....	53	53	56	59	62	65	67	68	70	70	70	70
Dewpoint.....	51	51	51	52	52	53	52	52	51	50	49	49
RH.....	92	92	85	77	71	66	60	56	52	49	47	46
20 FT wind dir..	NW	NW	NW	NW	NW	NW	NW	NW	NW	NW	N	N
20 FT wind spd..	5	5	4	4	4	4	3	4	3	3	3	3
20 FT wind gust..	10	10	10	5	5	5	5	5	5	5	5	5
Mix hgt (kft)...	0.4	0.6	0.8	1.8	2.7	3.6	4.2	4.9	5.5	5.6	5.7	5.8
Transp wind dir..	NW	NW	NW	NW	NW	NW	NW	NW	N	N	N	N
Transp wind spd..	8	8	9	12	14	15	14	10	8	7	6	6
LVORI.....	6	6	4	3	3	1	1	1	1	1	1	1
ADI.....	5	9	10	21	32	40	52	32	50	43	40	39
VRate kt-ft/10003	5	7	18	33	48	50	45	38	33	31	30	30
Ceiling (hft)...	45	45	60	60	60	35	80	100	100	60	60	60
Visibility (sm)..	7	7	7	7	7	7	7	7	7			
Sfc pres (in)...	789	790	791	793	794	795	795	795	795	794	793	792

WEDNESDAY NIGHT:

Sky/weather.....Mostly clear (20-30 percent). A slight chance of showers early in the evening.

Min temperature.....Around 51.

Max humidity.....71 percent.

Wind (20 ft).....Light winds...becoming north around 5 mph early in the evening...then becoming light in the late evening and overnight.

Mixing height.....3700-4700 ft AGL...decreasing to 300 ft AGL.

Transport winds.....North 3 to 7 mph.

Smoke dispersal.....Poor to fair (700-23400 knot-ft).

LVORI.....3.

ADI.....23...decreasing to 2.

Stability class.....5.

Pcpn amount.....0.01 inches.

Ceiling (FT).....6000...increasing to 24000 after midnight.

Sfc pressure (in)...27.92.

DIVISION ASSIGNMENT LIST		1. BRANCH		2. Division/Group Charlie			
3. Incident Name Dobson Knob Fire		4. Operational Period Date: 4/12/17 Time: 0800-2000					
5. Operations Personnel							
Operations Chief	Jeff Burns / Glen Coley (T)		Division/Group Supervisor		Lee Wicker / Dwayne Vigil		
Branch Director							
6. Resources Assigned This Period							
Strike Team/Task Force/ Resource Designator	Leader	Last Shift	EMT	Number Persons	Trans Needed	Drop Off PT / Time	Pick Up Pt / Time
Dozer T3 NCFS 1x2	Lloyd Johnson			1	N		
Bridge 5	Cook			6	N		
Bridge 8	Frye			6	N		
Bridge 10	Greathouse			6	N		
ENG4 Bridge 12	Noble				N		
ENG6 NCFS 197	Caleb Garland			1	N		
ENG6 NCFS 191	James McJunkin			1	N		
Marion FD Pumper Tanker	TBD						
Dysartsville VFD Pumper Tanker	TBD						
VFD Contact	Frankie Hamrick			1	N		
7. Control Operations							
<ol style="list-style-type: none"> 1. Hold and Improve firelines and implement structure protection. 2. Conduct burnout operation around structures as needed. 3. Coordinate aviation requests through Operations Section Chief. 							
8. Special Instructions							
<ol style="list-style-type: none"> 1. If necessary, designate individuals as human repeaters. 2. Establish and maintain good communications with adjacent Divisions. 3. Apply LCES before engaging in suppression efforts. 4. Maintain effective and timely communications with local officials. 							
9. Division/Group Communication Summary							
Function	Frequency	System	Channel	Function	Frequency	System	Channel
Command	Rx: 151.4750 Tx: 159.3600	NCFS	9	Logistics	Rx: 151.2800 Tx: 151.2800	NCFS	5
Tactical Div/Group	Rx: 154.2800 Tx: 154.2800	NCFS	12	Air to Ground	Rx: 171.5750 Tx: 171.5750	NCFS	8
Prepared By (Resource Unit Leader) Dennis Register		Approved By (Planning Sect. Ch.) Don Watson		Date 4/11/17		Time 2200	

DIVISION ASSIGNMENT LIST		1. BRANCH		2. Division/Group Juliet			
3. Incident Name Dobson Knob Fire		4. Operational Period Date: 4/12/17 Time: 0800-2000					
5. Operations Personnel							
Operations Chief	Jeff Burns / Glen Coley (T)		Division/Group Supervisor		Keith Suttles / Aaron Gay		
Branch Director							
6. Resources Assigned This Period							
Strike Team/Task Force/ Resource Designator	Leader	Last Shift	EMT	Number Persons	Trans Needed	Drop Off PT / Time	Pick Up Pt / Time
Bridge 4	Shrimplin			6	N		
Bridge 14	Watson			6	N		
ENG6 115 McDowell P/U FF	TBD			2	N		
ENG6 187	Ellison			1	N		
Lolo Module	Colby			4	N		
7. Control Operations							
<ol style="list-style-type: none"> 1. Hold and Improve firelines. 2. Coordinate burnout operations with Division Sierra, burning from Juliet/Sierra break, northwest to Juliet/Charlie break. 3. Utilize helicopters as necessary, coordinating through Operations Section Chief. 							
8. Special Instructions							
<ol style="list-style-type: none"> 1. If necessary, designate individuals as human repeaters. 2. Establish and maintain good communications with adjacent Divisions. 3. Apply LCES before engaging in suppression efforts. 4. Maintain effective and timely communications with local officials. 							
9. Division/Group Communication Summary							
Function	Frequency	System	Channel	Function	Frequency	System	Channel
Command	Rx: 151.4750 Tx: 159.3600	NCFS	9	Logistics	Rx: 151.2800 Tx: 151.2800	NCFS	5
Tactical Div/Group	Rx: 151.4600 Tx: 151.4600	NCFS	2	Air to Ground	Rx: 171.5750 Tx: 171.5750	NCFS	8
Prepared By (Resource Unit Leader) Dennis Register		Approved By (Planning Sect. Ch.) Don Watson		Date 4/11/17		Time 2200	

DIVISION ASSIGNMENT LIST		1. BRANCH		2. Division/Group Sierra			
3. Incident Name Dobson Knob Fire		4. Operational Period Date: 4/12/17 Time: 0800-2000					
5. Operations Personnel							
Operations Chief	Jeff Burns / Glen Coley (T)		Division/Group Supervisor		George Brown / Kate Airhart (T)		
Branch Director							
6. Resources Assigned This Period							
Strike Team/Task Force/ Resource Designator	Leader	Last Shift	EMT	Number Persons	Trans Needed	Drop Off PT / Time	Pick Up Pt / Time
HC T2IA Patrick 20B	Wade Kemp			20	N		
7. Control Operations							
<ol style="list-style-type: none"> 1. Hold and Improve firelines. 2. Coordinate burnout operations with Division Juliet, burning north toward Sierra/Juliet break and south to Division Zulu. 3. Utilize helicopters as necessary, coordinating through Operations Section Chief. 							
8. Special Instructions							
<ol style="list-style-type: none"> 1. If necessary, designate individuals as human repeaters. 2. Establish and maintain good communications with adjacent Divisions. 3. Apply LCES before engaging in suppression efforts. 4. Maintain effective and timely communications with local officials. 							
9. Division/Group Communication Summary							
Function	Frequency	System	Channel	Function	Frequency	System	Channel
Command	Rx: 151.4750 Tx: 159.3600	NCFS	9	Logistics	Rx: 151.2800 Tx: 151.2800	NCFS	5
Tactical Div/Group	Rx: 151.3100 Tx: 151.3100	NCFS	3	Air to Ground	Rx: 171.5750 Tx: 171.5750	NCFS	8
Prepared By (Resource Unit Leader) Dennis Register		Approved By (Planning Sect. Ch.) Don Watson		Date 4/11/17		Time 2200	

DIVISION ASSIGNMENT LIST		1. BRANCH		2. Division/Group Zulu			
3. Incident Name Dobson Knob Fire		4. Operational Period Date: 4/12/17 Time: 0800-2000					
5. Operations Personnel							
Operations Chief	Jeff Burns / Glen Coley (T)		Division/Group Supervisor		George Brown		
Branch Director							
6. Resources Assigned This Period							
Strike Team/Task Force/ Resource Designator	Leader	Last Shift	EMT	Number Persons	Trans Needed	Drop Off PT / Time	Pick Up Pt / Time
7. Control Operations							
<ol style="list-style-type: none"> 1. Plan control objectives for the division. 2. Coordinate operations with Division Juliet. 							
8. Special Instructions							
<ol style="list-style-type: none"> 1. If necessary, designate individuals as human repeaters. 2. Establish and maintain good communications with adjacent Divisions. 3. Apply LCES before engaging in suppression efforts. 4. Maintain effective and timely communications with local officials. 							
9. Division/Group Communication Summary							
Function	Frequency	System	Channel	Function	Frequency	System	Channel
Command	Rx: 151.4750 Tx: 159.3600	NCFS	9	Logistics	Rx: 151.2800 Tx: 151.2800	NCFS	5
Tactical Div/Group	Rx: 151.2650 Tx: 151.2650	NCFS	4	Air to Ground	Rx: 171.5750 Tx: 171.5750	NCFS	8
Prepared By (Resource Unit Leader)		Approved By (Planning Sect. Ch.)			Date		Time
Dennis Register		Don Watson			4/11/17		2200

DIVISION ASSIGNMENT LIST		1. BRANCH	2. Division/Group Night Shift					
3. Incident Name Dobson Knob Fire		4. Operational Period Date: 4/12/17 Time: 0800-2000						
5. Operations Personnel								
Operations Chief	Jeff Burns / Glen Coley (T)		Division/Group Supervisor					
Branch Director								
6. Resources Assigned This Period								
Strike Team/Task Force/ Resource Designator	Leader	Last Shift	EMT	Number Persons	Trans Needed	Drop Off PT / Time	Pick Up Pt / Time	
unstaffed								
7. Control Operations								
<ol style="list-style-type: none"> Patrol burnout areas. Maintain structure protection presence. 								
8. Special Instructions								
<ol style="list-style-type: none"> If necessary, designate individuals as human repeaters. Establish and maintain good communications with adjacent Divisions. Apply LCES before engaging in suppression efforts. Maintain effective and timely communications with local officials. 								
9. Division/Group Communication Summary								
Function	Frequency	System	Channel	Function	Frequency	System	Channel	
Command	Rx: 151.4750 Tx: 159.3600	NCFS	9	Logistics	Rx: 151.2800 Tx: 151.2800	NCFS	5	
Tactical Div/Group	Rx: 154.2800 Tx: 154.2800	NCFS	12	Air to Ground	Rx: 171.5750 Tx: 171.5750	NCFS	8	
Prepared By (Resource Unit Leader) Dennis Register		Approved By (Planning Sect. Ch.) Don Watson		Date 4/11/17		Time 2200		

DIVISION ASSIGNMENT LIST		1. BRANCH	2. Division/Group Structure Protection				
3. Incident Name Dobson Knob Fire		4. Operational Period Date: 4/12/17 Time: 0800-2000					
5. Operations Personnel							
Operations Chief	Jeff Burns / Glen Coley (T)	Division/Group Supervisor		Jeremy Callicut			
Branch Director							
6. Resources Assigned This Period							
Strike Team/Task Force/ Resource Designator	Leader	Last Shift	EMT	Number Persons	Trans Needed	Drop Off PT / Time	Pick Up Pt / Time
7. Control Operations							
1. Coordinate and Plan structure protection needs with Division Charlie and Division Juliet.							
8. Special Instructions							
1. If necessary, designate individuals as human repeaters.							
2. Establish and maintain good communications with adjacent Divisions.							
3. Apply LCES before engaging in suppression efforts.							
4. Maintain effective and timely communications with local officials.							
9. Division/Group Communication Summary							
Function	Frequency	System	Channel	Function	Frequency	System	Channel
Command	Rx: 151.4750 Tx: 159.3600	NCFS	9	Logistics	Rx: 151.2800 Tx: 151.2800	NCFS	5
Tactical Div/Group	Rx: 154.2800 Tx: 154.2800	NCFS	12	Air to Ground	Rx: 171.5750 Tx: 171.5750	NCFS	8
Prepared By (Resource Unit Leader) Dennis Register		Approved By (Planning Sect. Ch.) Don Watson		Date 4/11/17		Time 2200	

INCIDENT RADIO COMMUNICATIONS PLAN		1. Incident Name Dobson Knob Fire		2. Date/Time Prepared 4/11/2017 19:30 PM		3. Operational Period Date/Time 4/12/17 Day shift	
Radio Type	Channel	Function	4. Basic Radio Channel Utilization Mode: W=Wideband, N=Narrowband, D=Digital, M=Mixed		Assignment	Mode	Remarks
			Frequency	Tone			
	1	Operations	RX: 151.4000	136.5	DIV D	N	
			TX: 151.4000	136.5			
	2	Operations	RX: 151.4600	136.5	DIV J	N	
			TX: 151.4600	136.5			
	3	Operations	RX: 151.3100	136.5	DIV S	N	
			TX: 151.3100	136.5			
	4	Operations	RX: 151.2650	136.5	DIV Z	N	
			TX: 151.2650	136.5			
	5	Operations	RX: 151.2800	136.5	LOGISTICS	N	
			TX: 151.2800	136.5			
	6	Operations	RX:			N	
			TX:				
	7	Operations	RX:			N	
			TX:				
	8	Operations	RX: 171.5750	131.8	NC A2G	N	
			TX: 171.5750	131.8			
	9	Command	RX: 151.4750	88.5	CMD (D-1GIBBES PK)	N	
			TX: 159.3600	179.9			
	10	Command	RX:			N	
			TX:				
	11	Command	RX: 159.3150	131.8		N	
			TX: 154.2800				
	12	Operations	RX: 154.2800	156.7	DIV C & STR PROTECTION / NIGHT	N	
			TX: 154.2800	156.7			
	13	Operations	RX:			N	
			TX:				
	14	Operations	RX:			N	
			TX:				
	15	Operations	RX: 168.6250		AIR GUARD	N	
			TX: 168.6250	110.9			
	16		RX:			N	
			TX:				

5. Prepared by (Communications Unit)
Jimmy Meadows COML



Dobson Knob Phone Roster

NAME	POSITION	PHONE NUMBERS	
COMMAND & GENERAL STAFF			
Kevin Harvell	Incident Commander	919-548-4190	
Bruce MacDonald	PIO	828-713-4096	
Jeff Marshburn	Safety		
AGENCY REPS			
OPERATIONS			
Jeff Burns	Field Ops	828-713-0201	
Derrick Moore	Planning Ops	252-229-0163	
Dwayne Vigil	DIVS		
Aaron Gay	DIVS	252-312-4369	
George Brown	DIVS	336-583-6590	
Jeremy Callicut	DIVS	704-438-1260	
AIR OPERATIONS			
FINANCE			
Beth Plummer	FSC	919-545-4499	
Chasity Webb	Cost	828-260-5385	
Tim Sarlopus	CTSP		
PLANNING			
Don Watson	PSC	910-334-0033	
Dennis Register	Resources	252-229-0165	
Austin Harriett	Check-in	252-229-0810	
Caleb Jones	Situation	828-450-5210	
Phil Wallace	FOBS	919-628-6430	
James Caddy	FOBS	252-339-5694	
David Jones	GISS		
Richard Cockerham	GISS	828-292-4575	
Jim Slye	Documentation	252-560-5467	
Bill Pickens	Demob		
LOGISTICS			
ORDERING			
Travis Ruff	LSC	828-413-4440	
Keith Walters	Supply	336-214-2426	
Patrick Raynor	ORDM	336-239-2377	
Joe Shoupe	R&D		
Jimmy Meadows	Communications	252-229-7307	
Derek Risen	Facilities	910-309-8677	
Estella Burlson	Food	828-897-1418	
Jerol Berry	Ground Support	252-741-0299	
Danny Carswell	Equipment		

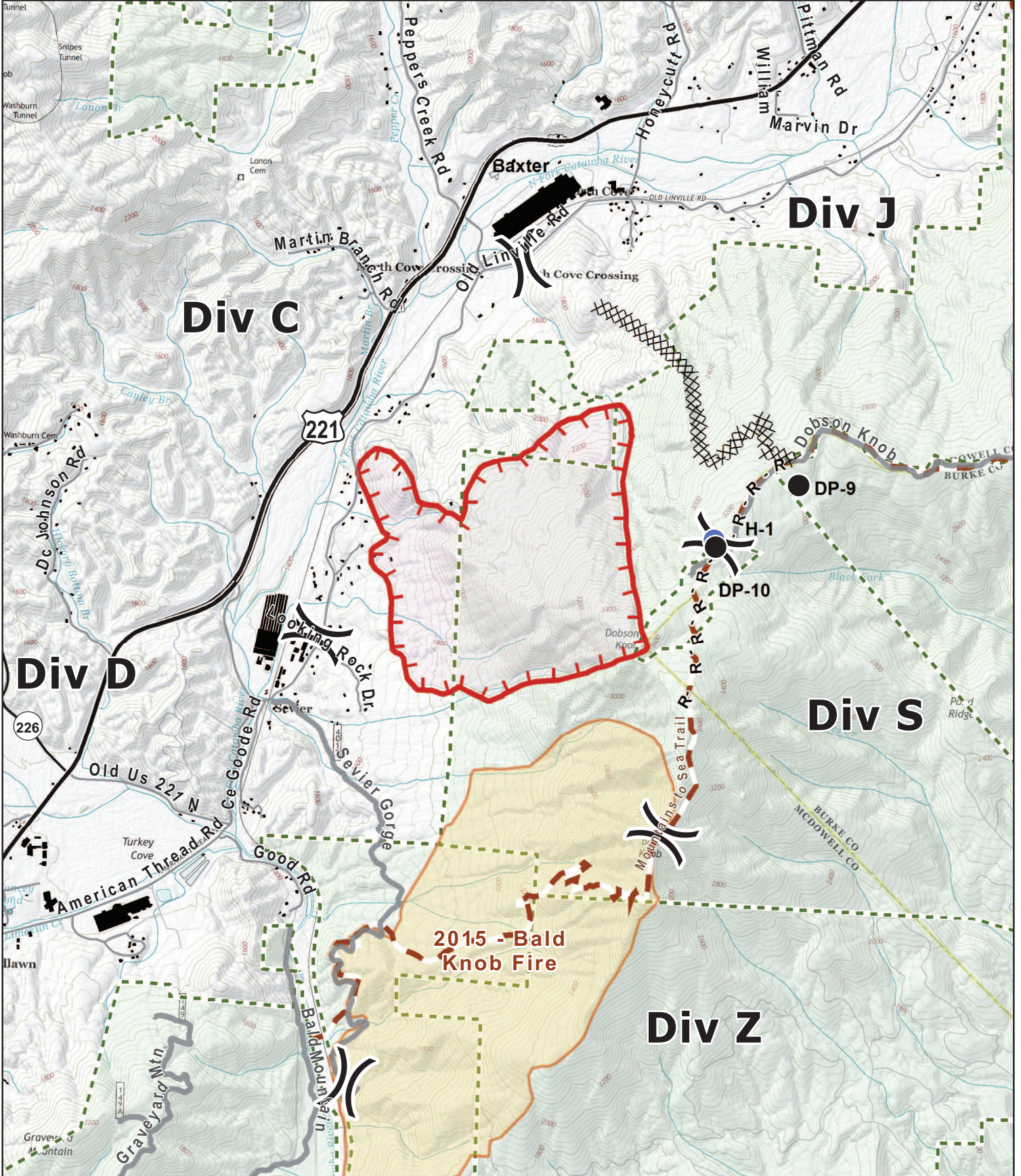


IAP Map

Dobson Knob Fire NC-NCS-170029



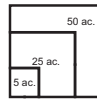
April 12, 2017
Day Period



- Uncontrolled Fire Edge
- Drop Point
- USFS Ownership
- Completed Dozer Line
- Helispot
- Trail
- Division
- RAWS Station
- R - Road as Completed Line



Step 1: Use QR Code or Search URL to locate this folder on the internet.
 Step 2: Navigate to the GIS/PRODUCTS folder.
 Step 3: Select the file that matches the fire.
 Step 4: Select & download the needed PDFs.



Information shown is based on the best available data at the time of map production.
 Latest intel: 20170411 @ 2000

20170411 @ 2242
 Map Datum: NAD83 Feet
 Author: D Jones, GISS
 0 1,200 2,400 Feet

UNIT LOG		1. Incident Name	2. Date Prepared	3. Time Prepared
4. Unit Name/Designators		5. Unit Leader (Name and Position)		6. Operational Period
7. Personnel Roster Assigned				
Name		ICS Position		Home Base
8. Activity Log				
Time		Major Events		
9. Prepared by (Name and Position)				

Line of 9's Report

Date:

Time:

1	PATIENT LOCATION <i>Physical Description</i>	Lat/ Lon Use Degrees, Decimal Minutes, Address or Crossroads			
2	PATIENT CHIEF COMPLAINT/ ASSESSMENT	Patient Assessment:	Injury:		
Male	Female	Level of Consciousness	Bleeding	Fracture	Age
Conscious	Yes	Breathing Rate	Heat	Burns	No
Breathing	Yes	Pulse Rate	Head Injury	Bee Sting	No
3	LEVEL OF SEVERITY	Skin Condition			
	RED- URGENT	Ambulance or med- evac helicopter			
	YELLOW- PRIORITY	Ambulance or consider med- evac if delayed trans.			
	GREEN- MINOR INJURY	Ambulance on private vehicle			
4	SPECIAL EQUIPMENT NEEDED	Four-wheeled drive vehicles, low-angle rescue, confined space patient decontamination			
5	ON SCENE MEDICAL AND CONTACT	Who is in charge (IC?) Name and medical qualifications of person providing treatment			
6	NUMBER OR CHANNEL	Cell phone number. Company radio, CB			
7	LANDING ZONE LOCATION	Use Degrees, Decimal Minutes (00" 00.00). Mark landing location			
8	SPECIAL HAZARDS	Trees, power lines, slopes, wind direction			
9	PATIENTS AFFILIATION AND CONTACT	Contact for family member, employer and insurance information (I.&I/ Self Insured)			