

# DOBSON KNOB FIRE

NC-NCS-170029  
McDOWELL COUNTY



**M**aintain Prompt communications with Forces, Your Supervisor and Adjoining Forces

April 14, 2017  
Friday  
Day 0800-2000 hrs.  
Night 2000-0800 hrs.



<p>3. TIME 7. INCIDENT NAME <b>DoDson Knob</b></p>			
<p>4. OPERATIONAL PERIOD (DATE/TIME) April 14, 2017 0800-2000</p>			
<p>5. GENERAL CONTROL OBJECTIVES FOR THE INCIDENT (INCLUDE ALTERNATIVES) <b><u>Control Objectives</u></b></p> <p>1) Providing for the safety of the general public and firefighters through:</p> <ul style="list-style-type: none"> <li>- Adherence to The 10 Standard Fire Orders,</li> <li>- Mitigate the 18 Situations That Shout Watch-Out,</li> <li>- Implement and maintain LCES</li> <li>- Conduct frequent Risk Assessments</li> <li>- Maintaining a 2/1 work rest ratio.</li> <li>- STOP/THINK/TALK/ACT</li> </ul> <p>2) Contain the Fire:</p> <ul style="list-style-type: none"> <li>- North of the Bald Knob Fire scar.</li> <li>- West of State Road 105</li> <li>- South of the Over Mountain Victory Trail</li> <li>- East of US 221</li> </ul> <p>3) Mop up as needed to secure and maintain containment.</p> <p>4) Coordinate with McDowell County Emergency Management and Volunteer Fire Departments to provide Structure Protection.</p> <p><b><u>Management Objectives</u></b></p> <p>1) Keep the general public and local officials, as well as incident stakeholders informed of fire status through timely situation updates and personal contacts.</p> <p>2) Provide accurate cost accounting and documentation of the incident in accordance with the NCFS Incident Business Handbook and USFS Incident Business procedures.</p> <p>3) Ensure that all trainees receive a quality training assignment</p> <p>4) Complete and implement the Demob plan.</p> <p>5) Continue documentation of repair/rehab points.</p>			
<p>6. WEATHER FORECAST FOR OPERATIONAL PERIOD <b>Day Shift conditions:</b> Temp 71 RH 46 Winds NW @ 5-6 then becoming light <b>Night Shift conditions:</b> Temp 51 RH 71 Evening winds light &amp; variable</p>			
<p>7. GENERAL SAFETY MESSAGE</p> <ul style="list-style-type: none"> <li>• <b>Drive with headlights on. Drive defensively on curvy roads and trails</b></li> <li>• <b>Ensure LCES are in place and maintain 10's and 18's</b></li> <li>• <b>Maintain safe distance when working with heavy equipment</b></li> <li>• <b>Beware of steep slopes, rough terrain, and cliffs</b></li> </ul>			
<p>8. ATTACHMENTS (✓ IF ATTACHED)</p> <p><input checked="" type="checkbox"/> <del>SAFETY MESSAGE</del> (ICS 203)</p> <p><input checked="" type="checkbox"/> <del>INCIDENT LIST</del> (ICS 204)</p> <p><input checked="" type="checkbox"/> <del>COMMUNICATIONS PLAN</del> (ICS 205)</p>			
<p>9. PREPARED BY (INCIDENT SECTION LEADER) <i>Ben McDaniel</i></p>			

ORGANIZATION ASSIGNMENT LIST		9. Operations Section	
<b>1. Incident Name</b> <b>Dobson Knob Fire</b>		Field Ops	Jeff Burns / Glen Coley (T)
		Planning Ops	Derrick Moore/Aaron Gay-T
		<b>a. Branch I</b>	
<b>2. Date</b> April 13, 2017	<b>3. Time</b> 1500	Branch Director	
<b>4. Operational Period</b> April 14, 2017 0800-2000		Division/Group	<b>C</b> Lee Wicker / Dwayne Vigil
		Division/Group	<b>J</b> Keith Suttles
<b>5. Command and General Staff</b>		Division/Group	<b>S</b> G. Brown / Kate Airhart (T)
Incident Commander	Kevin Harvell	Division/Group	<b>Z</b> George Brown
Safety Officers	Jeff Marshburn	Division/Group	<b>Night Shift</b> Kenny Griffin (OSC-T)
	Joe Jones	<b>b. Branch II</b>	
		Branch Director	
Information Officers	Bill Swartley	Division/Group	
	Bruce MacDonald	Division/Group	
	Eric Muecke	Division/Group	
Liaison Officers			
<b>6. Agency Representatives</b>		<b>c. Branch III</b>	
McDowell Co. EM	William Kehler	Branch Director	
McDowell Co. EM	Craig Walker	Division/Group	
McDowell EM Logistics	Steve Hancock	Division/Group	
NCFS AA	Greg Smith	Division/Group	
USFS AA	Jake Lubera	Division/Group	
USFS AA	Jeff Gardner	Division/Group	
USFS Rep	Greg Philipp	Division/Group	
USFS Rep	Allen Nicholas	<b>d. Branch IV</b>	
		Branch Director	
		Division/Group	
<b>7. Planning Section</b>		Division/Group	
Chief	Don Watson	Division/Group	
Deputy		Division/Group	
Resources Unit	Jim Slye (T)	<b>e. Other Groups</b>	
Situation Unit	Caleb Jones (T)	Structure Protection Group	Jeremy Callicutt/Dennis Register (T)
Documentation		Water Handling Group	
Field Observers	Phil Wallace	Staging	
	James Caddy		
	Nicole Deweese (T)		
Demob Unit	Bill Pickens		
Fire Behavior Analyst	John Cook		
Status Check-in	Austin Harriett	<b>f. Air Operations Branch</b>	
GIS	David Jones	Air Ops Branch Director	
	Richard Cockerham	Air Attack Supervisor	
	Christian Vose (T)	Air Support Supervisor	
		Helibase Managers	
<b>8. Logistics Section</b>		<b>10. Finance Section</b>	
Chief	Travis Ruff	Chief	Beth Plummer
Deputy	Travis Shidal	Deputy	
Supply Unit	Keith Walters	Procurement Unit	
Facilities Unit	Derek Risen	Time Unit	Amanda Hubbard
Ground Support Unit	Jerol Berry	Cost Unit	Chasity Webb
Communications Unit	Jimmy Meadows	Equipment Time Recorder	Mary Nicholson - T
Communications Tech	Bill Collins	Personel Time Recorder	Vickie Parson - T
Equipment Manager	Danny Carswell	Computer Specialist	Tim Sarlopus
Ordering Manager	Patrick Raynor	Incident Business Advisor	
Food Unit	Estella Burselson	<b>Prepared by (Resource Unit Leader)</b>	
Medical Unit	Stuart Scott (T)	Jim Slye	
Receiving & Dist.	Joe Shoupe		

Spot Forecast for Dobson Knob...USFS  
 National Weather Service Greenville-Spartanburg SC  
 359 PM EDT Thu Apr 13 2017

Forecast is based on request time of 1600 EDT on April 13.  
 If conditions become unrepresentative...contact the National Weather Service.

.DISCUSSION...  
 High pressure will settle to our northeast then slide offshore, keeping most of the area dry through Sunday. Some isolated to scattered diurnal showers and thunderstorms are possible each day. Another weak cold front slowly moves through the region early next week with another round of scattered showers and thunderstorms. Additional isolated to scattered showers and thunderstorms are expected through next Thursday.

.FRIDAY...

Sky/weather.....Partly sunny (50-60 percent). Patchy fog early in the morning. Isolated showers and thunderstorms early in the afternoon. Scattered showers and thunderstorms late.

Max temperature....Around 73.

Min humidity.....47 percent.

Wind (20 ft).....Light winds...becoming south 5 to 7 mph in the afternoon. Gusty and erratic winds expected near thunderstorms early in the afternoon.

Mixing height.....300-1600 ft AGL...increasing to 7500-7600 ft AGL.

Transport winds....Southwest 1 to 8 mph.

Smoke dispersal.....Poor to good (200-47000 knot-ft)...increasing to good (52600 knot-ft) late.

LVORI.....4.

ADI.....4...increasing to 22 late in the morning...then decreasing to 0 early in the afternoon.

Stability class.....4.

Pcpn amount.....0.02 inches.

Ceiling (FT).....2200...decreasing to 1400 early in the morning...increasing to 22000 late in the morning...decreasing to 7000 late.

Visibility (SM).....6 until late afternoon.

Sfc pressure (in)...27.93.

TIME (EDT)	6AM	7AM	8AM	9AM	10A	11A	12P	1PM	2PM	3PM	4PM	5PM
Sky (%).....	52	52	52	51	49	48	49	50	51	54	57	61
Weather cov.....	PTY								ISO	ISO	SCT	SCT
Weather type....	FOG								RW	RW	RW	RW
Tstm cov.....									ISO	ISO	SCT	SCT
Temp.....	53	53	55	59	63	66	68	70	71	72	73	72
Dewpoint.....	50	50	50	51	52	52	52	51	51	51	51	52
RH.....	89	90	83	75	68	62	56	52	48	47	48	49
20 FT wind dir..SE	SE	SE	SE	SE	S	S	S	S	S	S	S	S
20 FT wind spd..3	2	2	2	2	3	4	5	5	6	6	6	6
20 FT wind gust.5	5	5	5	5	5	5	10	10	10	10	10	15
Mix hgt (kft)...0.3	0.3	0.3	1.6	2.9	4.2	5.3	6.4	7.5	7.5	7.6	7.6	7.6
Transp wind dir.N	N	N	NW	W	W	SW	SW	SW	SW	SW	SW	SW
Transp wind spd.1	1	1	3	6	8	7	6	5	6	7	8	8
LVORI.....	7	7	6	4	3	1	2	2	2	2	2	2
ADI.....	1	1	1	7	22	38	24	12	0	0	0	0
VRate kt-ft/10000	0	0	4	15	28	33	32	32	32	38	47	56
Ceiling (hft)...22	16	14	50	220	250	250	200	50	240	210	70	
Visibility (sm).7	6	7	7	9	9	9	9	7				
Sfc pres (in)...795	796	797	798	798	799	798	797	797	797	795	794	793

# FIRE BEHAVIOR FORECAST

<b>FORECAST NUMBER:</b> 3	<b>TYPE OF FIRE:</b> Wildfire
<b>FIRE NAME:</b> Dobson Knob Fire	<b>OPERATIONAL PERIOD:</b> 4/14/2017 Day
<b>DATE ISSUED:</b> 4/13/2017	<b>TIME ISSUED:</b> 1900
<b>UNIT:</b> USFS Grandfather District	<b>Signed:</b> John Cook FBAN <i>John Cook</i>

**WEATHER SUMMARY:** Partly sunny with chance of afternoon thunderstorms.

**Max Temp:** 73°      **Min RH:** 46%      **Winds (20'):** LGT/VAR then S@6G10      **Sky Cover:** Partly Sunny (50%)  
**Mixing Height:** 6,000'      **Ventilation Index:** 47,000      **ADI (1-100):** 22 early then decreasing      **Fuel Shading:** 20%

## FIRE BEHAVIOR

**FUELS:** The predominant fuel types in the Dobson Knob Fire area include hardwood leaf litter (FM 9) intermixed with dead and downed fuels (FM 5 and 11 or SB2 - Low Load Blowdown) due to overstory mortality created by pine beetle infestations. Pine ridge stringers are burning easily. Thick areas of Mountain Laurel (TU5) are present in the understory and burn readily when aligned with slope. Both Burning Index and Energy Release Component are below the 90<sup>th</sup> percentile (*Fuel Model G 90<sup>th</sup> percentile is 41, 97<sup>th</sup> percentile is 46 based on the Grandfather RAWS*)

Complete leaf out is still at least a week away.

**1 hour fuel moisture:** 7% (same); **10 hour fuel moisture:** 10% (+2); **100 hour fuel moisture:** 13% (+1)  
**Energy Release Component:** 31 (+1)      **Burning Index:** 37 (+2)      **Probability of Ignition:** 60%  
**Forecasted KBDI:** 75 (+13)

### Expected Fire Behavior:

Timber Litter (FM9): 2' (same) flame length and Rate of spread 2 ch/hr (-3) on a 20% slope  
Initiating spot fires have been quickly contained by direct attack in this fuel.

Mt. Laurel (TU5): 6' (+1) flame length and Rate of spread 6 ch/hr (+1) on a 20% slope

**Local Thresholds:** (bold are present) **eyelevel winds over 4 mph**, RH below 25% and **Temp > 60 deg**

**SPECIFIC:** Better humidity recovery last night. Fire behavior will generally be the same as yesterday. Increased cloud cover will keep fuel temps down and reduce PIG. Southerly wind through the day with erratic winds if thunderstorms near. Flare ups within drains are the greatest chance for upslope runs with flame lengths up to 10'. **Spotting can occur up to 500' from a torching tree.**

**DIV C:** South winds will push the northern end of the division.

**DIV J:** South winds will push the line through the day. Smoke will also reduce visibility.

**DIV S:** South wind in the morning will combine with upslope winds as the day progresses creating an erratic situation along the ridge.

**DIV Z:** South winds in the early afternoon will be conducive for burning out. Erratic winds possible in the afternoon.

## AIR OPERATIONS and SMOKE FORECAST:

Inversion burn off around 0900 and visibility up to 9 miles.

## SAFETY

**Fire Order #1:** Keep informed on fire weather conditions and forecasts  
Observed weather has varied from the forecast. Be sure you are aware of current conditions at your location when you engage.

**Safety Zone Separation Distance from Flame:** 20' or 1/10<sup>th</sup> acre

# HEALTH AND SAFETY MESSAGE

*SAFETY* starts with *YOU*

We are ALL accountable for SAFE behaviors

INCIDENT: Dobson Knob Fire

DATE: 4/14/17

TIME: 0800-2000

## **Major Hazards and Risks:**

**SAWYER OPERATIONS-** Wear all PPE. Watch out for tension/compression wood before cutting. Maintain secure footing and grip on saw at all times. Maintain area of control and make eye contact with swamper before he approaches cut area. Pay special attention to cutting Hemlocks' the top of Hemlocks can snap out without warning.

**DRIVING** – It's Easter weekend!!! We can expect increase level of traffic both vehicular and pedestrian around town, so be extra cautious while driving. Drive defensively. Use passenger as a lookout, navigator, and backing guide. Obey speed limits. Use headlights and seatbelts. When meeting oncoming vehicles slow down and give them the right-of-way. Keep your windows clean for good visibility.

**STEEP TERRAIN-** Rock faces are "VERY DANGEROUS" throughout these areas! There is no reason to approach rock faces due to fall hazard. Maintain communication with all crew members at all times; Watch footing and maintain your spacing. Refer to IRPG pg 3-4.

**COMMUNICATIONS-** There are several different radios and frequencies being used on the incident. Make sure your radio is programmed correctly. Check the Divisional Assignments Page for your correct operational channel.

**SNAGS-** Hazard trees, both dead snags and live green trees, are one of the most common risks encountered on the fireline. All firefighters should frequently survey their work area for potential hazards. Refer to pages 22-23 in the IRPG Guide.

**TRANSITION-** Transition is a red flag event. Accidents often increase during this time. Effective communication is imperative; brief others as needed; debrief your action; communicate hazards to others. Then acknowledge the message and don't be afraid to ask if you don't know.

**ESCAPE ROUTES & SAFETY ZONES-** LCES, ESTABLISH and IDENTIFY safety zones and escape routes. Know where these are located and the route to them. IRPG pg 7.

**UNBURNED AREA/ REBURN POTENTIAL-** LCES; utilize Air Attack if available. Know predicted weather and fire behavior; post lookouts as needed.

**FIRE BEHAVIOR-** Maintain situational awareness, follow 10 Standard Orders, recognize / mitigate the 18 Watch Out Situations, and apply LCES. Know the fire weather forecast. Monitor conditions.

*Accidents: Contact your supervisor and inform him/her. Follow emergency procedures at bottom of medical plan.*

## **\*\*\*Conduct Tailgate Safety Briefings** **Briefing Checklist Inside Back Cover of I.R.P.G.**

### **Standard Firefighting Orders**

1. Keep informed on fire weather conditions and forecast.
2. Know what your fire is doing at all times.
3. Base all actions on current and expected behavior of the fire.
4. Identify escape routes and safety zones and make them known.
5. Post lookouts when there is a possible danger.
6. Be alert. Keep calm. Think clearly. Act decisively.
7. Maintain prompt communications with your forces, your supervisor and adjoining forces.
8. Give clear instructions and insure they are understood.
9. Maintain control of your forces at all times.
10. Fight fire aggressively, having provided for safety first

### **18 WATCHOUT SITUATIONS**

1. Fire not scouted and sized up.
2. In country not seen in daylight.
3. Safety zones and escape routes not identified.
4. Unfamiliar with weather and local factors influencing fire behavior.
5. Uninformed on strategy, tactics, and hazards.
6. Instructions and assignments not clear.
7. No communication link with crewmembers/supervisors.
8. Constructing line without safe anchor point.
9. Building fireline downhill with fire below.
10. Attempting frontal assault on fire.
11. Unburned fuel between you and the fire.
12. Cannot see main fire, not in contact with anyone who can.
13. On a hillside where rolling material can ignite fuel below.
14. Weather is getting hotter and drier.
15. Wind increases and/or changes direction.
16. Getting frequent spot fires across line.
17. Terrain and fuels make escape to safety zones difficult.
18. Taking a nap near the fire line

Safety Officers: Jeff Marshburn- SOF2, Joe Jones- SOF2

<b>DIVISION ASSIGNMENT LIST</b>				1. <b>BRANCH</b>		2. Division/Group <b>Charlie</b>	
3. Incident Name <b>Dobson Knob Fire</b>				4. Operational Period Date: 4/14/17                      Time: 0800-2000			
5. Operations Personnel							
Operations Chief	Jeff Burns / Glen Coley (T)		Division/Group Supervisor		Lee Wicker / Dwayne Vigil		
Branch Director							
6. Resources Assigned This Period							
Strike Team/Task Force/ Resource Designator	Leader	Last Shift	EMT	Number Persons	Trans Needed	Drop Off PT / Time	Pick Up Pt / Time
Dozer T3 NCFS 1x2	Lloyd Johnson			2	N		
Bridge 5	Cook/Buchanan			6	N		
Bridge 15	Greer			6	N		
Bridge 16	Raby			6	N		
ENG6 NCFS 197	Caleb Garland			2	N		
ENG6 NCFS 191	James McJunkin			1	N		
Medic 8			Y	1	N		
7. Control Operations							
<ol style="list-style-type: none"> <li>1. Continue to hold and Improve firelines and implement structure protection.</li> <li>2. Continue mop-up operations along fireline as necessary.</li> <li>3. Coordinate aviation requests through Operations Section Chief.</li> </ol>							
8. Special Instructions							
<ol style="list-style-type: none"> <li>1. If necessary, designate individuals as human repeaters.</li> <li>2. Establish and maintain good communications with adjacent Divisions.</li> <li>3. Apply LCES before engaging in suppression efforts.</li> <li>4. Maintain effective and timely communications with local officials.</li> </ol>							
9. Division/Group Communication Summary							
Function	Frequency	System	Channel	Function	Frequency	System	Channel
<b>Command</b>	Rx: 151.4750 Tx: 159.3600	<b>NCFS</b>	<b>Group1 Gibbs Peak</b>	<b>Logistics</b>	Rx: 151.2800 Tx: 151.2800	<b>NCFS</b>	<b>5</b>
<b>Tactical Div/Group</b>	Rx: 154.2800 Tx: 154.2800	<b>NCFS</b>	<b>12</b>	<b>Air to Ground</b>	Rx: 171.5750 Tx: 171.5750	<b>NCFS</b>	<b>8</b>
Prepared By (Resource Unit Leader)		Approved By (Planning Sect. Ch.)		Date		Time	
<b>Jim Slye</b>		<b>Don Watson</b>		<b>4/13/17</b>		<b>2050</b>	

<b>DIVISION ASSIGNMENT LIST</b>			1. <b>BRANCH</b>		2. Division/Group <b>Juliet</b>		
3. Incident Name <b>Dobson Knob Fire</b>			4. Operational Period Date: 4/14/17 Time: 0800-2000				
5. Operations Personnel							
Operations Chief	Jeff Burns / Glen Coley (T)		Division/Group Supervisor		Keith Suttles		
Branch Director							
6. Resources Assigned This Period							
Strike Team/Task Force/ Resource Designator	Leader	Last Shift	EMT	Number Persons	Trans Needed	Drop Off PT / Time	Pick Up Pt / Time
ENG6 115 McDowell P/U FF	Charlie Presnell/Corey Presnell			2	N		
Sacramento IHC	Barone			20	N		
Region 3 Crew Module	Justin Carpenter			6	N		
Medic 7 Ambulance w/Paramedic			Y	2	N	DP9	DP9
Medic 9			Y	1	N		
Rescue 977 4x4 UTV			Y	2	N	DP9	DP9
7. Control Operations							
<ol style="list-style-type: none"> <li>1. <b>Hold and Improve firelines from previous burnout operations.</b></li> <li>2. <b>Continue mop-up operations along fireline as necessary.</b></li> <li>3. <b>Utilize helicopters as necessary, coordinating through Operations Section Chief.</b></li> </ol>							
8. Special Instructions							
<ol style="list-style-type: none"> <li>1. <b>If necessary, designate individuals as human repeaters.</b></li> <li>2. <b>Establish and maintain good communications with adjacent Divisions.</b></li> <li>3. <b>Apply LCES before engaging in suppression efforts.</b></li> <li>4. <b>Maintain effective and timely communications with local officials.</b></li> </ol>							
9. Division/Group Communication Summary							
Function	Frequency	System	Channel	Function	Frequency	System	Channel
<b>Command</b>	Rx: 151.4750 Tx: 159.3600	<b>NCFS</b>	<b>Group1 Gibbs Peak</b>	<b>Logistics</b>	Rx: 151.2800 Tx: 151.2800	<b>NCFS</b>	<b>5</b>
<b>Tactical Div/Group</b>	Rx: 151.4600 Tx: 151.4600	<b>NCFS</b>	<b>2</b>	<b>Air to Ground</b>	Rx: 171.5750 Tx: 171.5750	<b>NCFS</b>	<b>8</b>
Prepared By (Resource Unit Leader)		Approved By (Planning Sect. Ch.)		Date		Time	
<b>Jim Slye</b>		<b>Don Watson</b>		<b>4/13/17</b>		<b>2057</b>	



<b>DIVISION ASSIGNMENT LIST</b>			<b>1. BRANCH</b>		2. Division/Group <b>Sierra</b>		
3. Incident Name <b>Dobson Knob Fire</b>			4. Operational Period Date: 4/14/17 Time: 0800-2000				
<b>5. Operations Personnel</b>							
Operations Chief		Jeff Burns / Glen Coley (T)		Division/Group Supervisor		George Brown / Kate Airhart (T)	
Branch Director							
<b>6. Resources Assigned This Period</b>							
Strike Team/Task Force/ Resource Designator	Leader	Last Shift	EMT	Number Persons	Trans Needed	Drop Off PT / Time	Pick Up Pt / Time
HC T2IA Patrick 20B	Wade Kemp			20	N		
Lolo Module	Colby			4	N		
7. Control Operations							
<ol style="list-style-type: none"> <li>1. <b>Hold and Improve firelines.</b></li> <li>2. <b>Continue mop-up operations along fireline as necessary.</b></li> <li>3. <b>Utilize helicopters as necessary, coordinating through Operations Section Chief.</b></li> <li>4. <b>Coordinate with Div Zulu to assist with burnout operations as needed.</b></li> </ol>							
8. Special Instructions							
<ol style="list-style-type: none"> <li>1. <b>If necessary, designate individuals as human repeaters.</b></li> <li>2. <b>Establish and maintain good communications with adjacent Divisions.</b></li> <li>3. <b>Apply LCES before engaging in suppression efforts.</b></li> <li>4. <b>Maintain effective and timely communications with local officials.</b></li> </ol>							
<b>9. Division/Group Communication Summary</b>							
Function	Frequency	System	Channel	Function	Frequency	System	Channel
<b>Command</b>	Rx: 151.4750 Tx: 159.3600	<b>NCFS</b>	<b>Group1 Gibbs Peak</b>	<b>Logistics</b>	Rx: 151.2800 Tx: 151.2800	<b>NCFS</b>	<b>5</b>
<b>Tactical Div/Group</b>	Rx: 151.3100 Tx: 151.3100	<b>NCFS</b>	<b>3</b>	<b>Air to Ground</b>	Rx: 171.5750 Tx: 171.5750	<b>NCFS</b>	<b>8</b>
Prepared By (Resource Unit Leader)			Approved By (Planning Sect. Ch.)			Date	Time
<b>Jim Slye</b>			<b>Don Watson</b>			<b>4/13/17</b>	<b>2055</b>

<b>DIVISION ASSIGNMENT LIST</b>		1. <b>BRANCH</b>		2. Division/Group <b>Zulu</b>			
3. Incident Name <b>Dobson Knob Fire</b>		4. Operational Period Date: 4/14/17 Time: 0800-2000					
5. Operations Personnel							
Operations Chief	Jeff Burns / Glen Coley (T)		Division/Group Supervisor		George Brown		
Branch Director							
6. Resources Assigned This Period							
Strike Team/Task Force/ Resource Designator	Leader	Last Shift	EMT	Number Persons	Trans Needed	Drop Off PT / Time	Pick Up Pt / Time
NCFS T2 HC Region 2	Brian Michaelson			20	N		
Coconino T2IA HC	Aric Rasmussen			20	N		
Bridge 12	Noble			6	N		
Bridge 13	Gilliam			6	N		
7. Control Operations							
<ol style="list-style-type: none"> <li>1. <b>Improve indirect fireline and prep for burnout.</b></li> <li>2. <b>Conduct burnout activity with Operations Section Chief.</b></li> </ol>							
8. Special Instructions							
<ol style="list-style-type: none"> <li>1. <b>If necessary, designate individuals as human repeaters.</b></li> <li>2. <b>Establish and maintain good communications with adjacent Divisions.</b></li> <li>3. <b>Apply LCES before engaging in suppression efforts.</b></li> <li>4. <b>Maintain effective and timely communications with local officials.</b></li> </ol>							
9. Division/Group Communication Summary							
Function	Frequency	System	Channel	Function	Frequency	System	Channel
<b>Command</b>	Rx: 151.4750 Tx: 159.3600	<b>NCFS</b>	<b>Group1 Gibbs Peak</b>	<b>Logistics</b>	Rx: 151.2800 Tx: 151.2800	<b>NCFS</b>	<b>5</b>
<b>Tactical Div/Group</b>	Rx: 151.2650 Tx: 151.2650	<b>NCFS</b>	<b>4</b>	<b>Air to Ground</b>	Rx: 171.5750 Tx: 171.5750	<b>NCFS</b>	<b>8</b>
Prepared By (Resource Unit Leader)		Approved By (Planning Sect. Ch.)		Date		Time	
<b>Jim Slye</b>		<b>Don Watson</b>		<b>4/13/17</b>		<b>2100</b>	

<b>DIVISION ASSIGNMENT LIST</b>		1. <b>BRANCH</b>		2. Division/Group <b>Structure Protection</b>				
3. Incident Name <b>Dobson Knob Fire</b>		4. Operational Period Date: 4/14/17                                  Time: 0800-2000						
5. Operations Personnel								
Operations Chief	Jeff Burns / Glen Coley (T)		Division/Group Supervisor		Jeremy Callicut/Dennis Register-T			
Branch Director								
6. Resources Assigned This Period								
Strike Team/Task Force/ Resource Designator	Leader		Last Shift	EMT	Number Persons	Trans Needed	Drop Off PT / Time	Pick Up Pt / Time
Region 1 Crew Module	Robb Davis				6	N		
ENG4 12E1	Rick Gore				2	N		
ENG4 9E1	Jonathan McCall				2	N		
ENG6 E-77	Jimmy McCall				2	N		
ENG6 E-78	Jeff Stone				2	N		
7. Control Operations								
1. <b>Coordinate and Plan structure protection needs with Divisions.</b>								
8. Special Instructions								
1. <b>If necessary, designate individuals as human repeaters.</b>								
2. <b>Establish and maintain good communications with adjacent Divisions.</b>								
3. <b>Apply LCES before engaging in suppression efforts.</b>								
4. <b>Maintain effective and timely communications with local officials.</b>								
9. Division/Group Communication Summary								
Function	Frequency	System	Channel	Function	Frequency	System	Channel	
<b>Command</b>	Rx: 151.4750 Tx: 159.3600	<b>NCFS</b>	<b>Group1 Gibbs Peak</b>	<b>Logistics</b>	Rx: 151.2800 Tx: 151.2800	<b>NCFS</b>	<b>5</b>	
<b>Tactical Div/Group</b>	Rx: 154.2800 Tx: 154.2800	<b>NCFS</b>	<b>12</b>	<b>Air to Ground</b>	Rx: 171.5750 Tx: 171.5750	<b>NCFS</b>	<b>8</b>	
Prepared By (Resource Unit Leader)		Approved By (Planning Sect. Ch.)			Date		Time	
<b>Jim Slye</b>		<b>Don Watson</b>			<b>4/13/17</b>		<b>1850</b>	
ICS 204							NFES 1328	

DIVISION ASSIGNMENT LIST			1. <b>BRANCH</b>		2. Division/Group <b>Night Shift</b>		
3. Incident Name <b>Dobson Knob Fire</b>			4. Operational Period Date: 4/14/17 Time: 2000-0800				
5. Operations Personnel							
Operations Chief		Jeff Burns / Glen Coley (T)		Division/Group Supervisor		Kenny Griffin – OSC (T)	
Branch Director							
6. Resources Assigned This Period							
Strike Team/Task Force/ Resource Designator	Leader	Last Shift	EMT	Number Persons	Trans Needed	Drop Off PT / Time	Pick Up Pt / Time
ENG6 NCFS	Seth Baugess			2	N		
ENG6 NCFS	Justin Bennett			2	N		
Region 1 Crew Module	Daniel McCoy			6	N		
7. Control Operations							
<ol style="list-style-type: none"> <li>1. Patrol burnout areas.</li> <li>2. Maintain structure protection presence.</li> </ol>							
8. Special Instructions							
<ol style="list-style-type: none"> <li>1. If necessary, designate individuals as human repeaters.</li> <li>2. Establish and maintain good communications with adjacent Divisions.</li> <li>3. Apply LCES before engaging in suppression efforts.</li> <li>4. Maintain effective and timely communications with local officials.</li> </ol>							
9. Division/Group Communication Summary							
Function	Frequency	System	Channel	Function	Frequency	System	Channel
<b>Command</b>	Rx: 151.4750 Tx: 159.3600	<b>NCFS</b>	<b>Group1 Gibbs Peak</b>	<b>Logistics</b>	Rx: 151.2800 Tx: 151.2800	<b>NCFS</b>	<b>5</b>
<b>Tactical Div/Group</b>	Rx: 154.2800 Tx: 154.2800	<b>NCFS</b>	<b>12</b>	<b>Air to Ground</b>	Rx: 171.5750 Tx: 171.5750	<b>NCFS</b>	<b>8</b>
Prepared By (Resource Unit Leader)		Approved By (Planning Sect. Ch.)			Date		Time
<b>Jim Slye</b>		<b>Don Watson</b>			<b>4/13/17</b>		<b>2115</b>

INCIDENT RADIO COMMUNICATIONS PLAN			1. Incident Name <b>Dobson Knob Fire</b>		2. Date/ Time Prepared <b>4/13/2017 18:50:00 PM</b>		3. Operational Period Date/Time <b>4/14/17 Day/Night Shift</b>	
4. Basic Radio Channel Utilization Mode: W=Wideband, N=Narrowband, D=Digital, M=Mixed								
Radio Type	Channel	Function	Frequency	Tone	Mode	Assignment	Remarks	
	1	Operations	RX: 151.4000 TX: 151.4000	136.5 136.5	N	DIV D		
	2	Operations	RX: 151.4600 TX: 151.4600	136.5 136.5	N	DIV J		
	3	Operations	RX: 151.3100 TX: 151.3100	136.5 136.5	N	DIV S		
	4	Operations	RX: 151.2650 TX: 151.2650	136.5 136.5	N	DIV Z		
	5	Logistics	RX: 151.2800 TX: 151.2800	136.5 136.5	N	LOGISTICS		
	6		RX: TX:					
	7		RX: TX:					
	8	Operations	RX: 171.5750 TX: 171.5750	131.8 131.8	N	NC A2G		
	9	Command	RX: 151.2200 TX: 159.3450	136.5 131.8	N	COMMAND REPEATER	INCIDENT GRP CH#9	
VIPER	BRAVO4	Command	RX: TX:			COMMAND COMMUNICATIONS	Viper Radio System	
	Group 1	Command	RX: 151.4750 TX: 159.3600	88.5 179.9	N	COMMAND REPEATER	D-1 Gibbes Peak	
	12	Operations	RX: 154.2800 TX: 154.2800	 156.7	N	DIV C & STR PROTECTION & NIGHT OPERATIONS		
VIPER	BRAVO3	Operations	RX: TX:			STRUCTURE PROTECTION	Viper Radio System	
	14		RX: TX:		N			
	15	Operations	RX: 168.6250 TX: 168.6250	 110.9	N	AIR GUARD		
	16		RX: TX:		N			
5. Prepared by (Communications Unit) Jimmy Meadows COML								



**DOBSON KNOB PHONE ROSTER**

<b>NAME</b>	<b>POSITION</b>	<b>PHONE NUMBERS</b>	
<b>COMMAND &amp; GENERAL STAFF</b>			
Kevin Harvell	Incident Commander	919-548-4190	
Bruce MacDonald	PIO	828-713-4096	
Bill Swartley	PIO	919-218-6576	
Eric Muecke	PIO	828-432-7920	
Jeff Marshburn	Safety	910-289-8680	
Joe Jones	Safety	828-734-5409	
<b>AGENCY REPS</b>			
William Kehler	McDowell Co EM	828-925-0725	
Craig Walker	McDowell Co EM	828-925-2055	
Steve Hancock	EM Logistics	828-803-4366	
Jeff Gardner	USFS	706-260-6296	
Jake Lubera	USFS	540-817-9444	
Allen Nicholas	USFS	618-841-1109	
Greg Phillip	USFS	828-460-0049	
Greg Smith	NCFS	828-674-8652 or 828-230-8527	
<b>OPERATIONS</b>			
Jeff Burns	Field Ops	828-713-0201	
Derrick Moore	Planning Ops	252-229-0163	
Glen Coley	Ops (T)	336-239-7023	
Aaron Gay	DIVS	252-312-4369	
George Brown	DIVS	336-583-6590	
Jeremy Callicut	DIVS	704-438-1260	
Dwayne Vigil	DIVS	828-231-4095	
<b>AIR OPERATIONS</b>			
<b>FINANCE</b>			
Beth Plummer	FSC	919-545-4499	
Chasity Webb	Cost	828-260-5385	
Amanda Hubbard	TIME	919-268-0931	
Tim Sarlopus	CTSP	919-744-0854	
Mary Nicholson	EQTR (T)	828-508-1804	
Vickie Parson	PTRC (T)		
<b>PLANNING</b>			
Don Watson	PSC	910-334-0033	
Dennis Register	Resources	252-229-0165	
Austin Harriett	Check-in	252-229-0810	
Caleb Jones	Situation	828-450-5210	
Phil Wallace	FOBS	919-628-6430	
James Caddy	FOBS	252-339-5694	
Nicole Deweese	FOBS (T)	406-223-4734	
David Jones	GISS	919-609-1073	
Richard Cockerham	GISS	828-292-4575	
Jim Slye	Documentation	252-560-5467	
Bill Pickens	Demob	919-475-4310	
<b>LOGISTICS</b>			
Travis Ruff	LSC	828-413-4440	
Travis Shidal	Deputy LSC	704-473-0430	
Keith Walters	Supply	336-214-2426	
Patrick Raynor	ORDM	336-239-2377	
Joe Shoupe	R&D	828-387-0126	
Jimmy Meadows	Communications	252-229-7307	
Derek Risen	Facilities	910-309-8677	
Estella Burlison	Food	828-897-1418	
Jerol Berry	Ground Support	252-741-0299	
Danny Carswell	Equipment	828-413-2611	
Stuart Scott	Medical (T)	828-773-8115	

**IAP Information Talking Points**  
**Friday, April 14, 2017**

- **If you see unescorted media within or near the fire footprint, please contact the ICP Fire Information Center at 919-218-6576 (or 828-713-4096), or call for INFORMATION over the radio, or email us using your smartphone at [dobsonknobfireinfo@gmail.com](mailto:dobsonknobfireinfo@gmail.com).**
- **We are all “ambassadors” on the fire. Your communication to walk-up customers speaks well of our firefighting community. Thank you for taking a moment to answer questions posed or call the ICP Information Center for an assist with a customer inquiry.**
- **Your family and friends can access fire-related information daily on INCIWEB. If you have some good fire photos to post on INCIWEB, please email them to [dobsonknobfireinfo@gmail.com](mailto:dobsonknobfireinfo@gmail.com).**
- **A Community Meeting is scheduled for tonight (7 p.m.) at the Woodlawn Baptist Church, 221N in Marion. The meeting will last about an hour and will include time for Q&A after presentations by IMT personnel.**
- **The ICP Information Center will accept lost and found items.**
- **Remember that a Holiday weekend is approaching tied to Spring Break; lots of visitors on the roads – so drive carefully and defensively.**
- **Have a safe and productive day!**

###



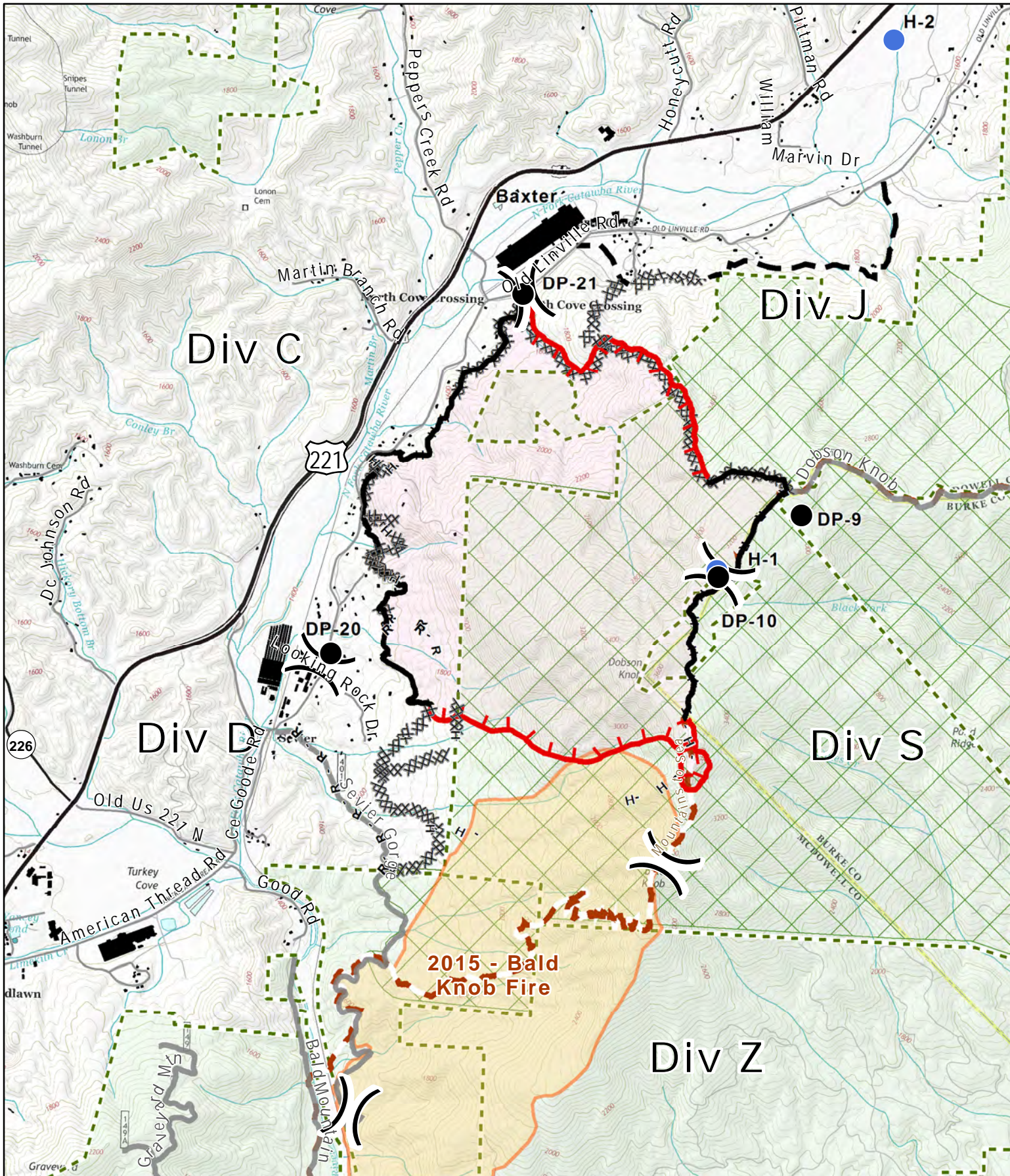


# IAP Map

**Dobson Knob Fire**  
NC-NCS-170029  
Approximate Acres: 1,507



April 14, 2017  
Day Period



- Division
- Uncontrolled Fire Edge
- Completed Line
- Completed Dozer Line
- Road as Completed Line
- Hand Line
- Planned Fire Line
- Drop Point
- Helispot
- RAW Station
- USFS Ownership
- Inventoried Roadless Area
- Trail



Information shown is based on the best available data at the time of map production.  
Latest intel: 20170413 @ 2130

20170413 @ 2130  
Map Datum: NAD83 Feet  
Author: D Jones, GISS  
0 1,200 2,400 Feet







## Line of 9's Report

Date:

Time:

1	PATIENT LOCATION <i>Physical Description</i>	Lat/ Lon Use Degrees, Decimal Minutes, Address or Crossroads
2	PATIENT CHIEF COMPLAINT/ ASSESSMENT  Male                      Female                      Age Conscious                  Yes                                  No Breathing                      Yes                                  No	<u>Patient Assessment:</u> <u>Injury:</u> Level of Consciousness                      Bleeding                      Fracture Breathing Rate                                  Heat                                  Burns Pulse Rate    Head Injury                      Bee Sting Skin Condition
3	LEVEL OF SEVERITY RED- URGENT YELLOW- PRIORITY GREEN- MINOR INJURY	Ambulance or med- evac helicopter Ambulance or consider med- evac if delayed trans. Ambulance on private vehicle
4	SPECIAL EQUIPMENT NEEDED	Four-wheeled drive vehicles, low-angle rescue, confined space patient decontamination
5	ON SCENE MEDICAL AND CONTACT	Who is in charge (IC?) Name and medical qualifications of person providing treatment
6	NUMBER OR CHANNEL	Cell phone number. Company radio, CB
7	LANDING ZONE LOCATION	Use Degrees, Decimal Minutes (00" 00.00). Mark landing location
8	SPECIAL HAZARDS	Trees, power lines, slopes, wind direction
9	PATIENTS AFFILIATION AND CONTACT	Contact for family member, employer and insurance information (I.&I/ Self Insured)