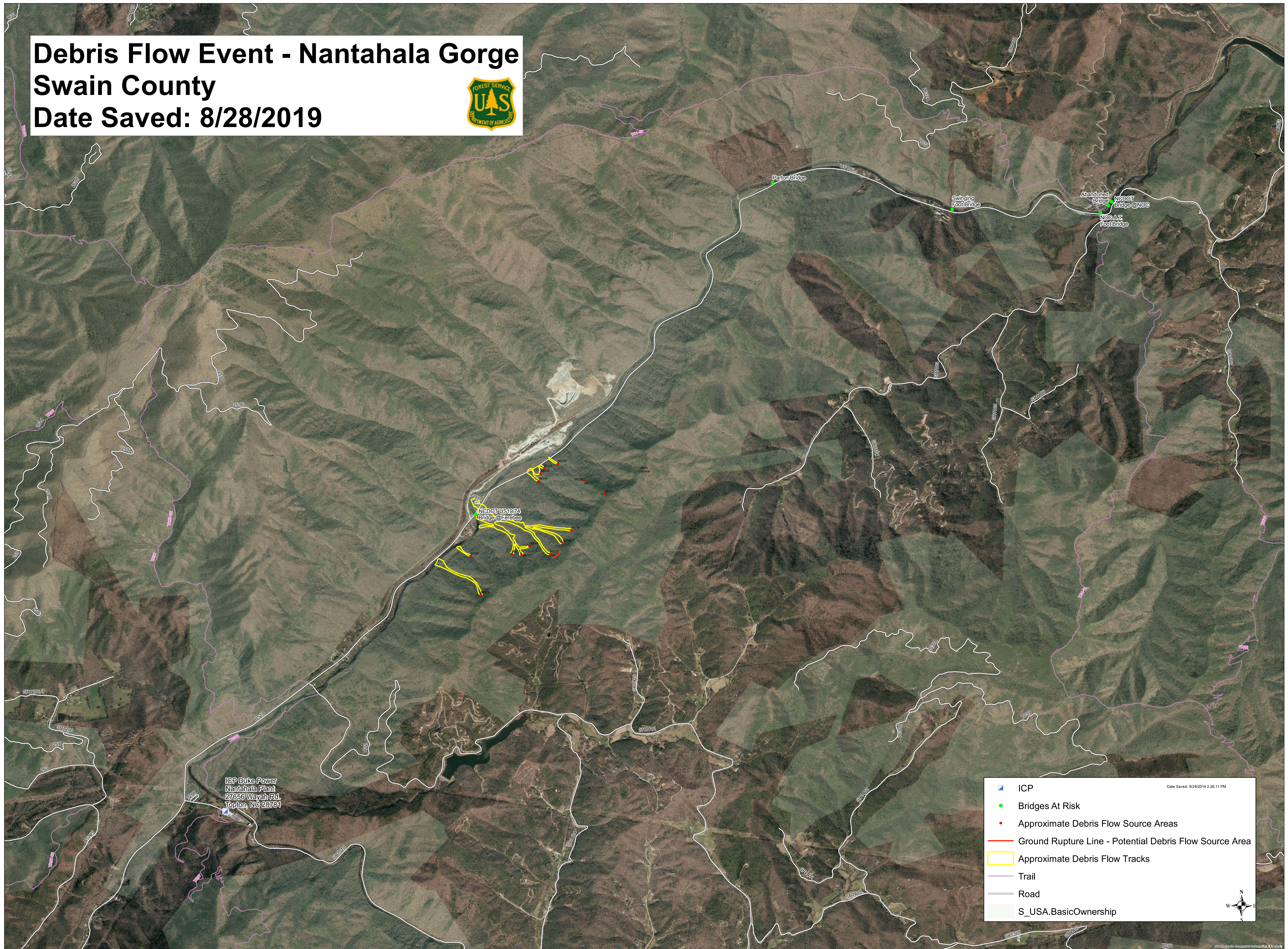


Debris Flow Event - Nantahala Gorge

Swain County

Date Saved: 8/28/2019



Date Saved: 8/28/2019 2:26:11 PM

- ICP
- Bridges At Risk
- Approximate Debris Flow Source Areas
- Ground Rupture Line - Potential Debris Flow Source Area
- Approximate Debris Flow Tracks
- Trail
- Road
- S_USA.BasicOwnership