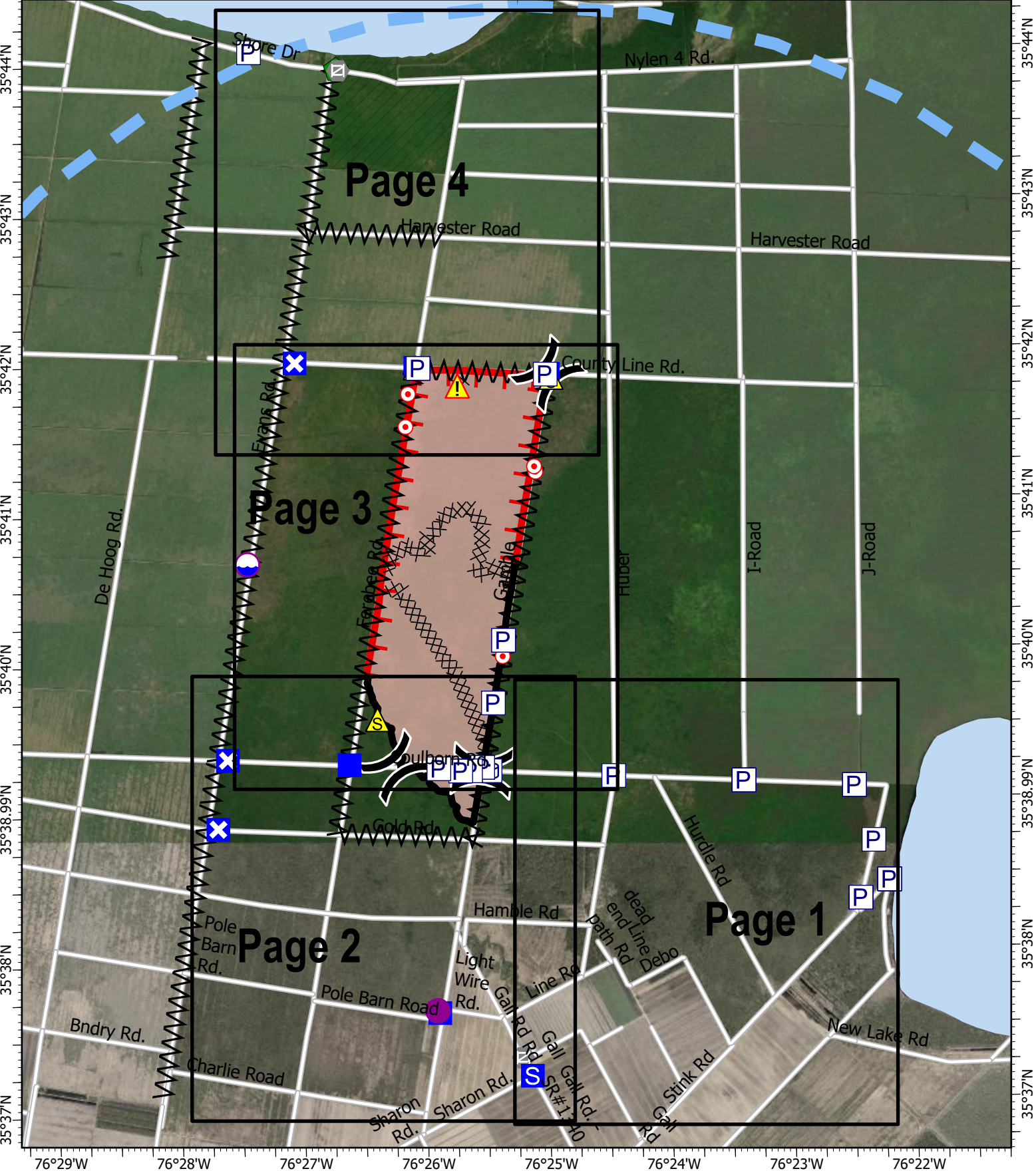


76°29'W 76°28'W 76°27'W 76°26'W 76°25'W 76°24'W 76°23'W 76°22'W 76°21.01'W

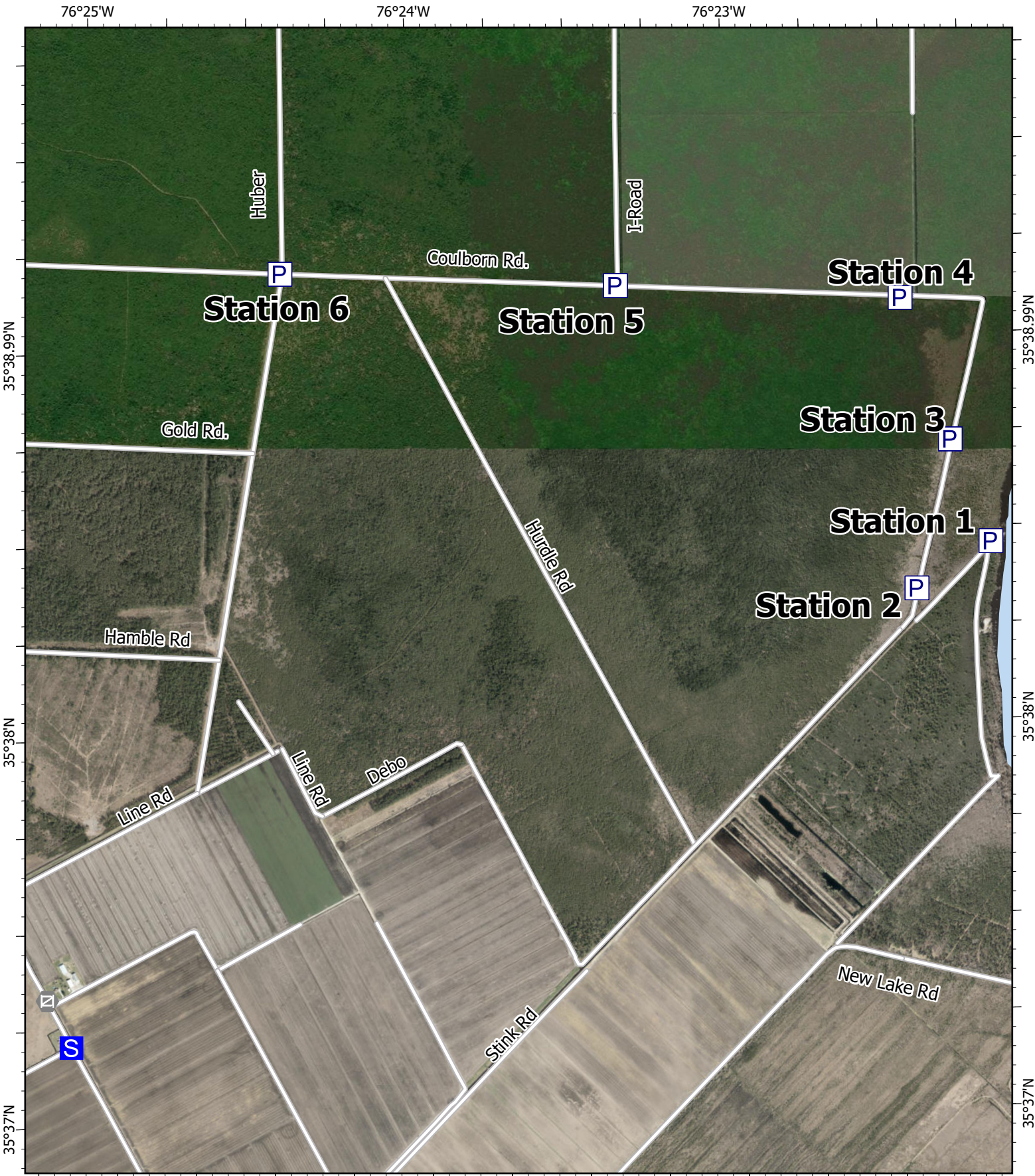


IAP
Ferebee
 NCNCS-220039
 7/1/2022
 1,938 acres at 6/26/2022 1700h

- | | | |
|-------------------------------|----------------------|-------------|
| Wildfire Daily Fire Perimeter | Division Break | Hazard |
| Contained | Drop Point | Pump |
| Uncontained | Closure | Water Tank |
| Completed Dozer Line | Staging Area | USFWS |
| Completed Fuel Break | Hot Spot - Spot Fire | State Parks |
| Temporary Flight Restriction | Gate | Lakes |
| Dip Site | Resource Location | |
| Helispot | Safety Zone | |

0 0.5 1 Miles

A.Lang
 6/30/2022 1746
 NAD 1983 NSRS2007 Datum



IAP

Ferebee
 NCNCS-220039
 7/1/2022

1,938 acres at 6/26/2022 1700h

- S Staging Area
- ⊠ Gate
- P Pump
- USFWS
- Lake

Page 1 of 4

0 500 1000 2000 Feet

A.Lang
 6/30/2022 1744
 NAD 1983 NSRS2007 Datum

76°27'W

76°26'W

76°25'W

35°38.99'N

35°38.99'N

35°38'N

35°38'N

35°37'N

35°37'N

76°27'W 76°26'W 76°25'W

Div D

Stations 11 Div E

DP2 Coulborn Rd.

Drop Tank

Stations DP1 10, 9, 8, & 7

Gold Rd.

Evans Rd.

Ferebee Rd.

Gamble

Div B

Hamble Rd

Pole Barn Rd.

Line Rd

Pole Barn Road H-1

DP20

Light Wire Rd. Gall Rd



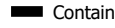

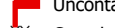

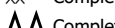

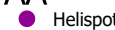


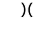


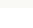
Charlie Road

Sharon Rd. S

IAP

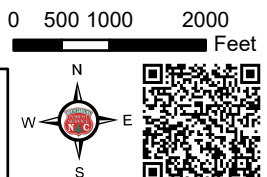

Ferebee
NCNCS-220039
7/1/2022

1,938 acres at 6/26/2022 1700h

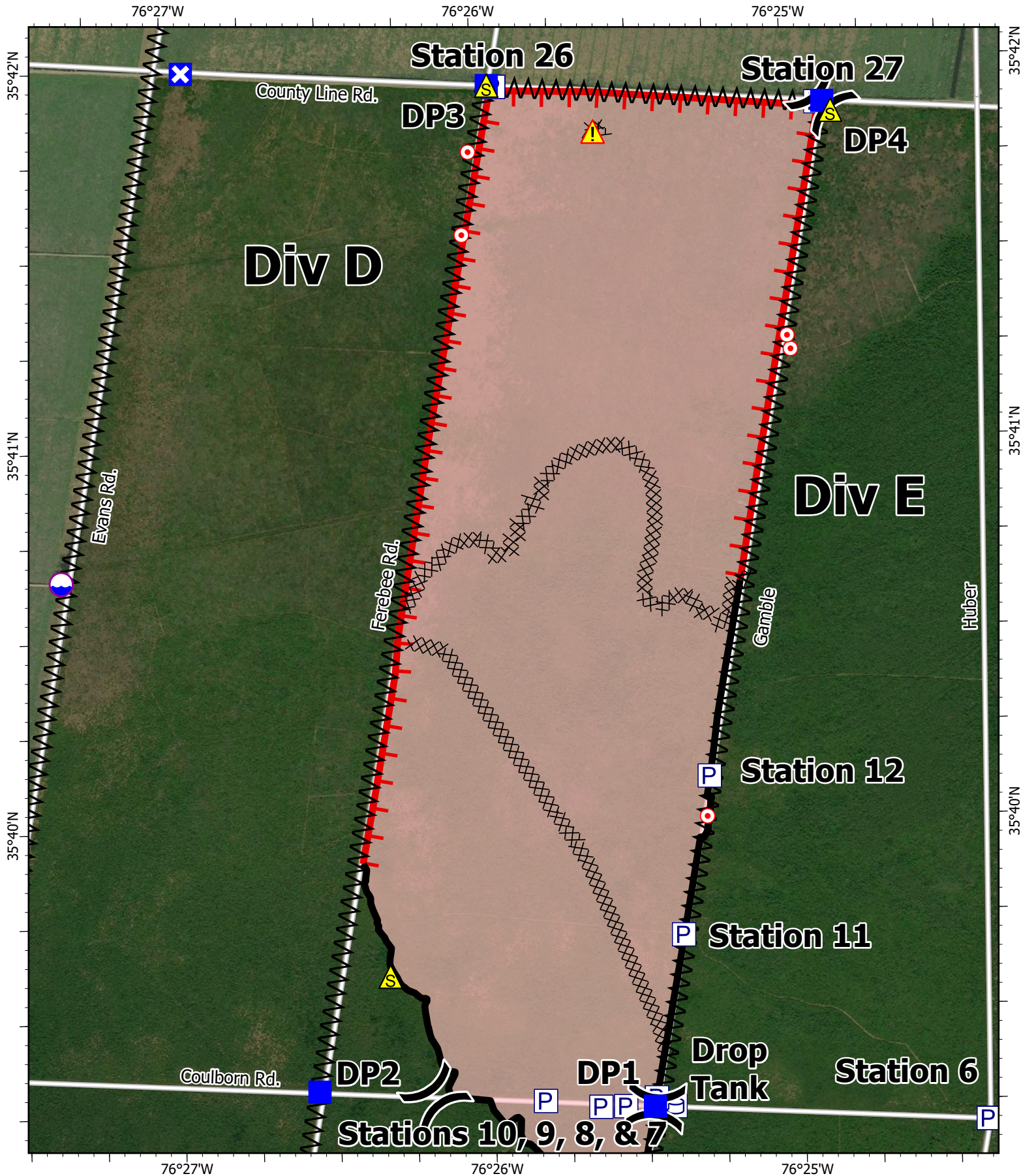
-  Wildfire Daily Fire Perimeter
-  Closure
-  Contained
-  Staging Area
-  Uncontained
-  Gate
-  Completed Dozer Line
-  Safety Zone
-  Completed Fuel Break
-  Helispot
-  Pump
-  Division Break
-  Drop Point
-  Water Tank
-  USFWS

Page 2 of 4

0 500 1000 2000 Feet

A. Lang
6/30/2022 1744
NAD 1983 NSRS2007 Datum



IAP

Ferebee
 NCNCS-220039
 7/1/2022

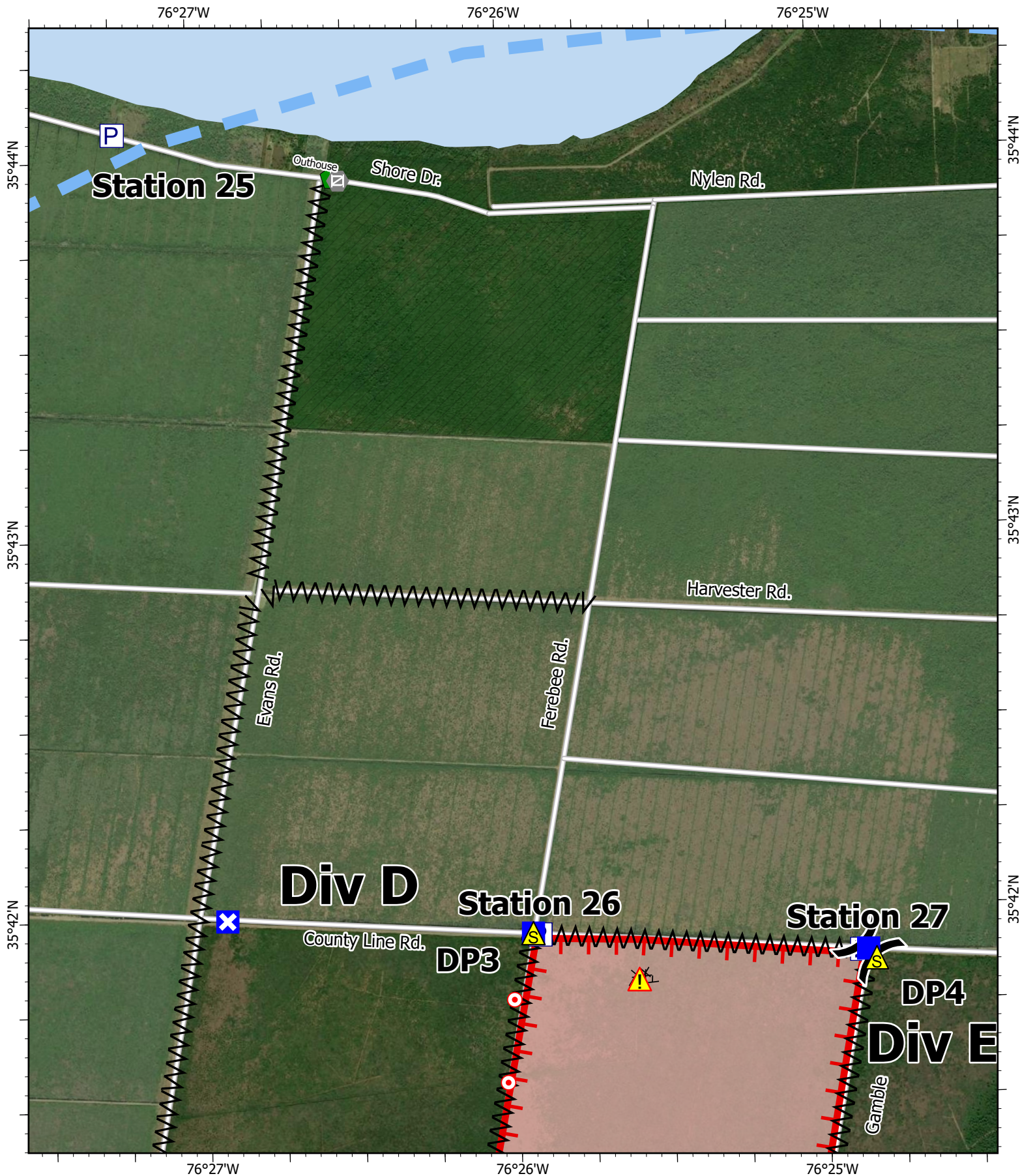
1,938 acres at 6/26/2022 1700h

- ▬ Wildfire Daily Fire Perimeter
- ▬ Contained
- ▬ Uncontained
- ⊗ Completed Dozer Line
- ⊞ Completed Fuel Break
- Dip Site
- ⌘ Division Break
- Drop Point
- ⊠ Closure
- Hot Spot - Spot Fire
- ▲ Safety Zone
- ⚠ Hazard
- Ⓟ Pump
- Ⓜ Water Tank
- ⬜ USFWS

Page 3 of 4

0 500 1000 2000 Feet

A. Lang
 6/30/2022 1744
 NAD 1983 NSRS2007 Datum



IAP
 Ferebee
 NCNCS-220039
 7/1/2022
 1,938 acres at 6/26/2022 1700h

- | | | |
|-------------------------------|----------------------|-------------|
| Wildfire Daily Fire Perimeter | Drop Point | Hazard |
| Uncontained | Closure | Pump |
| Completed Dozer Line | Hot Spot - Spot Fire | USFWS |
| Completed Fuel Break | Gate | State Parks |
| Temporary Flight Restriction | Resource Location | Lake |
| Division Break | Safety Zone | |

Page 4 of 4

A. Lang
 6/30/2022 1744
 NAD 1983 NSRS2007 Datum