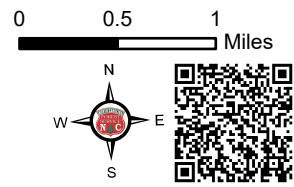


# IAP

Ferebee  
 NCNCS-220039  
 7/2/2022

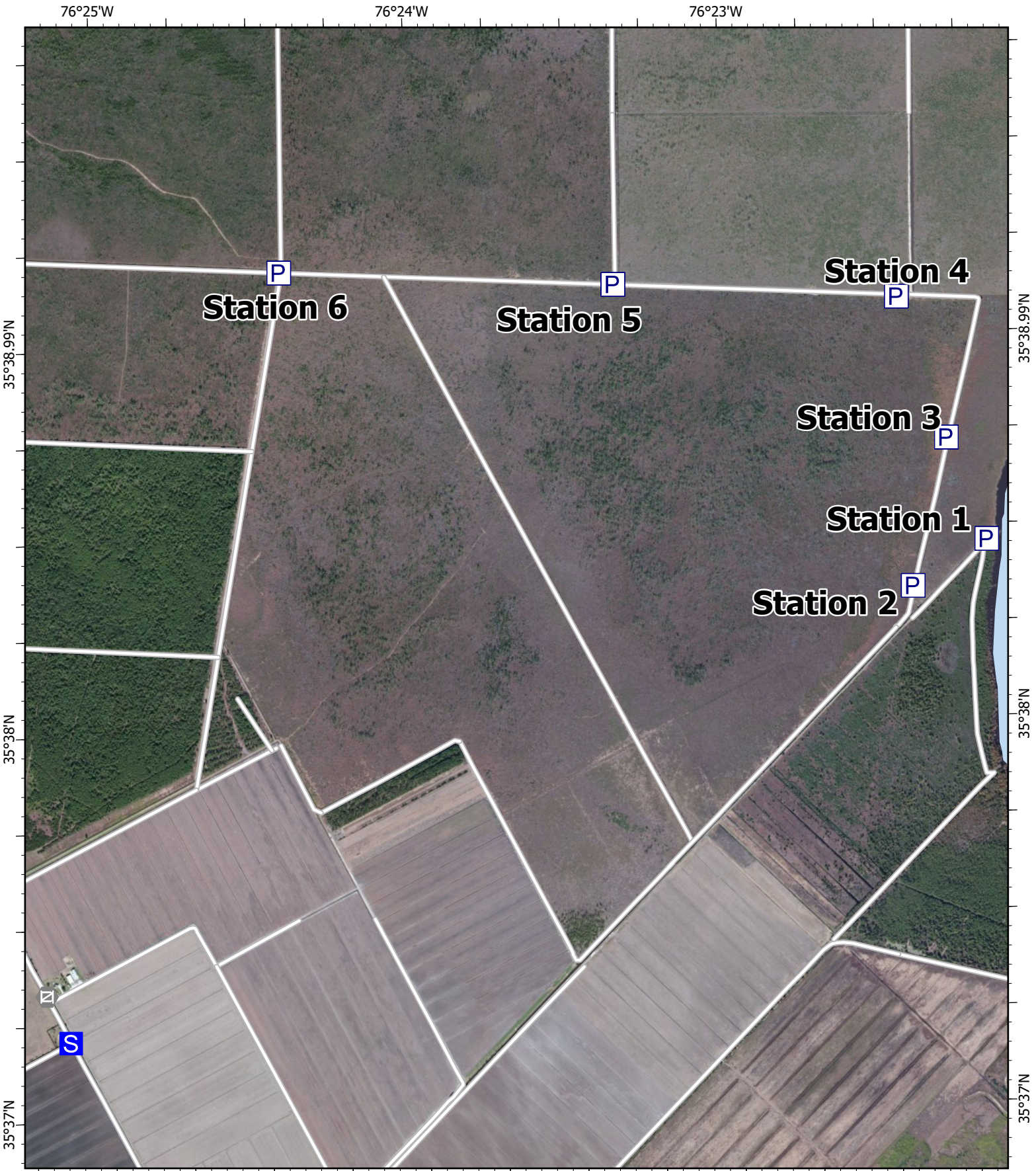
1,938 acres at 6/26/2022 1700h

- |                               |                      |             |
|-------------------------------|----------------------|-------------|
| Wildfire Daily Fire Perimeter | Division Break       | Hazard      |
| Contained                     | Drop Point           | Pump        |
| Uncontained                   | Closure              | Water Tank  |
| Completed Dozer Line          | Staging Area         | USFWS       |
| Completed Fuel Break          | Hot Spot - Spot Fire | State Parks |
| Temporary Flight Restriction  | Gate                 | Lakes       |
| Dip Site                      | Resource Location    | Local Roads |
| Helispot                      | Safety Zone          |             |



A.Lang  
 7/1/2022 1754  
 NAD 1983 NSRS2007 Datum





**IAP**  
 Ferebee  
 NCNCS-220039  
 7/2/2022

1,938 acres at 6/26/2022 1700h

- S Staging Area
- ⊠ Gate
- P Pump
- USFWS
- Lake
- Local Roads

Page 1 of 4

0 500 1000 2000 Feet

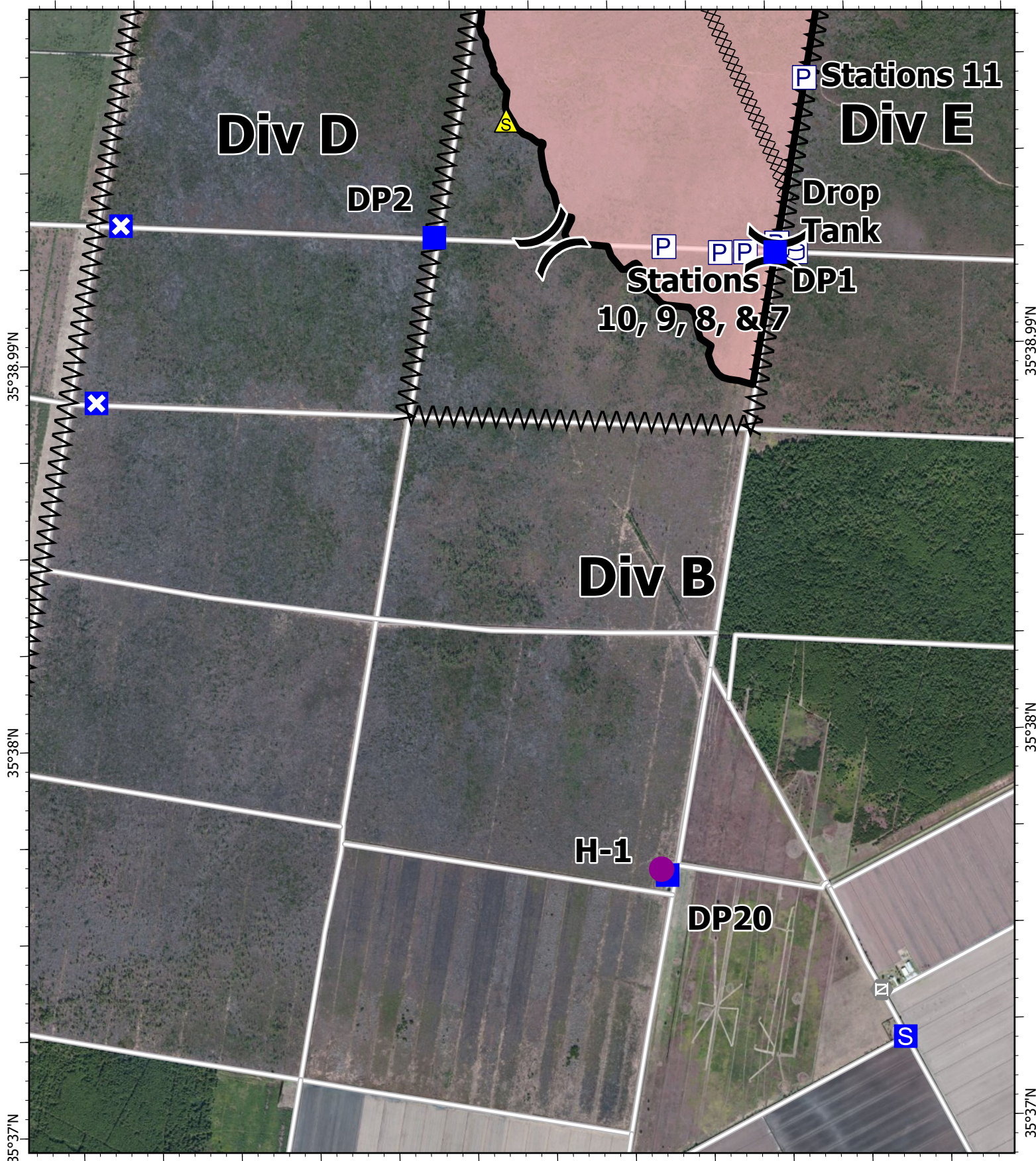
A.Lang  
 7/1/2022 1756  
 NAD 1983 NSRS2007 Datum



76°27'W

76°26'W

76°25'W



35°38.99'N

35°38.99'N

35°38'N

35°38'N

35°37'N

35°37'N

76°27'W

76°26'W

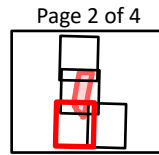
76°25'W

# IAP

Ferebee  
 NCNCS-220039  
 7/2/2022

1,938 acres at 6/26/2022 1700h

- |                               |                      |                      |            |                |             |
|-------------------------------|----------------------|----------------------|------------|----------------|-------------|
| Wildfire Daily Fire Perimeter | Contained            | Drop Point           | Closure    | Staging Area   | Safety Zone |
| Uncontained                   | Completed Dozer Line | Completed Fuel Break | Helispot   | Division Break | Pump        |
| Staging Area                  | Staging Area         | Pump                 | Water Tank | USFWS          | Local Roads |
| Gate                          | Safety Zone          | Pump                 | Water Tank | USFWS          | Local Roads |

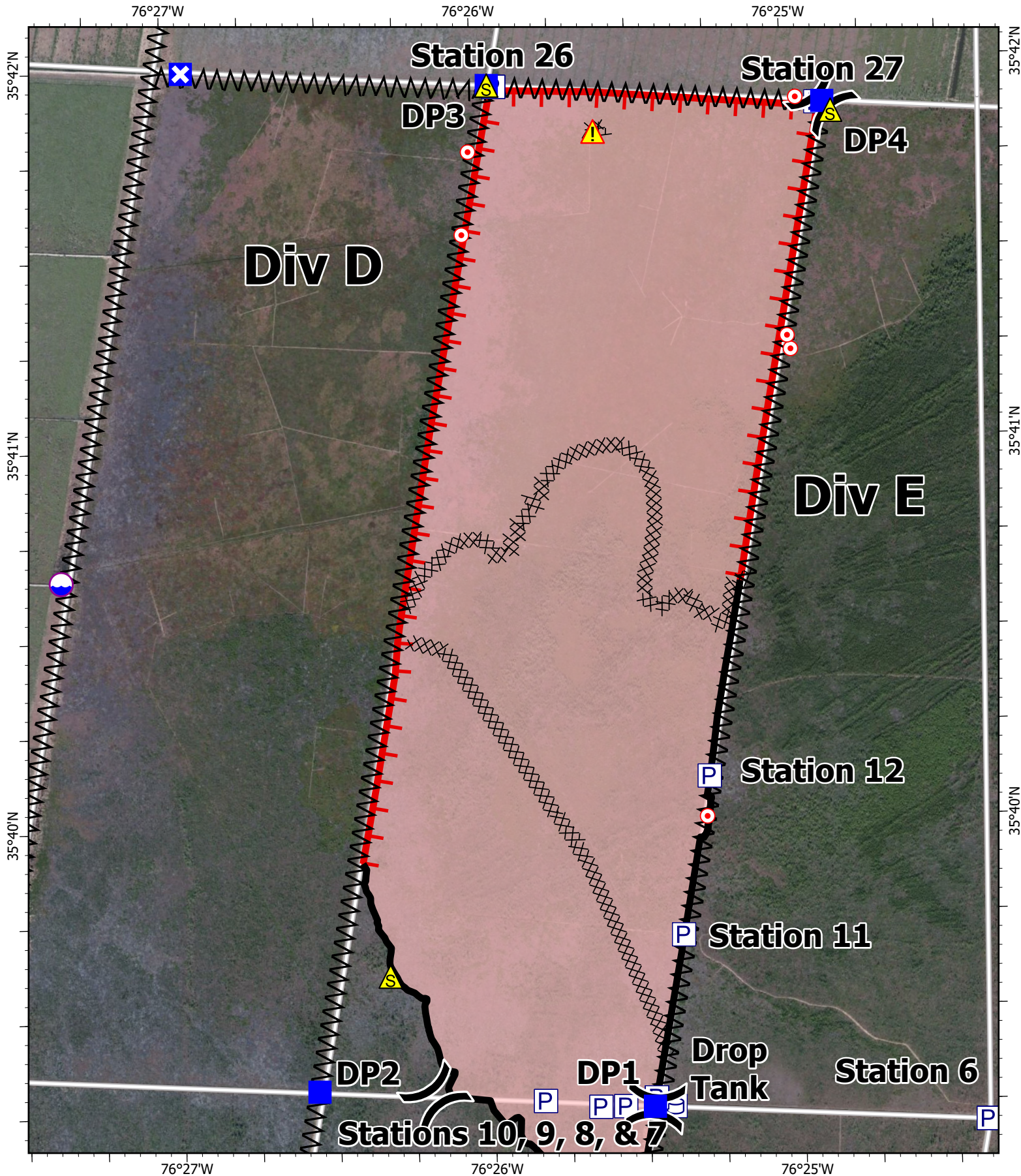


0 500 1000 2000 Feet



A.Lang  
 7/1/2022 1757  
 NAD 1983 NSRS2007 Datum





**IAP**

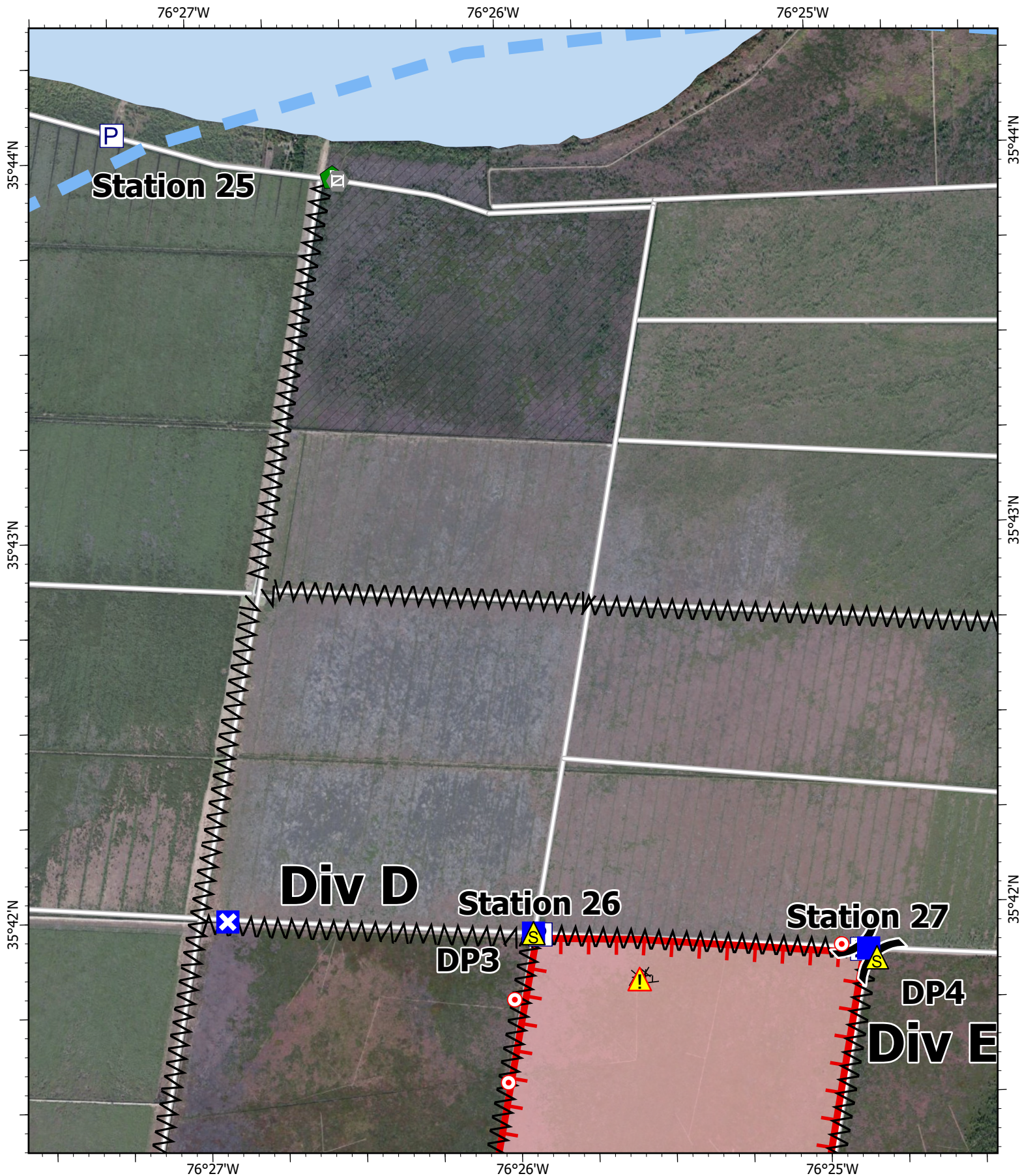
Ferebee  
 NCNCS-220039  
 7/2/2022

1,938 acres at 6/26/2022 1700h

- |                               |                      |             |
|-------------------------------|----------------------|-------------|
| Wildfire Daily Fire Perimeter | Division Break       | Pump        |
| Contained                     | Drop Point           | Water Tank  |
| Uncontained                   | Closure              | USFWS       |
| Completed Dozer Line          | Hot Spot - Spot Fire | Local Roads |
| Completed Fuel Break          | Safety Zone          |             |
| Dip Site                      | Hazard               |             |

Page 3 of 4





**IAP**

Ferebee  
 NCNCS-220039  
 7/2/2022

1,938 acres at 6/26/2022 1700h

- |                               |                      |             |
|-------------------------------|----------------------|-------------|
| Wildfire Daily Fire Perimeter | Drop Point           | Hazard      |
| Uncontained                   | Closure              | Pump        |
| Completed Dozer Line          | Hot Spot - Spot Fire | USFWS       |
| Completed Fuel Break          | Gate                 | State Parks |
| Temporary Flight Restriction  | Resource Location    | Lake        |
| Division Break                | Safety Zone          | Local Roads |

Page 4 of 4