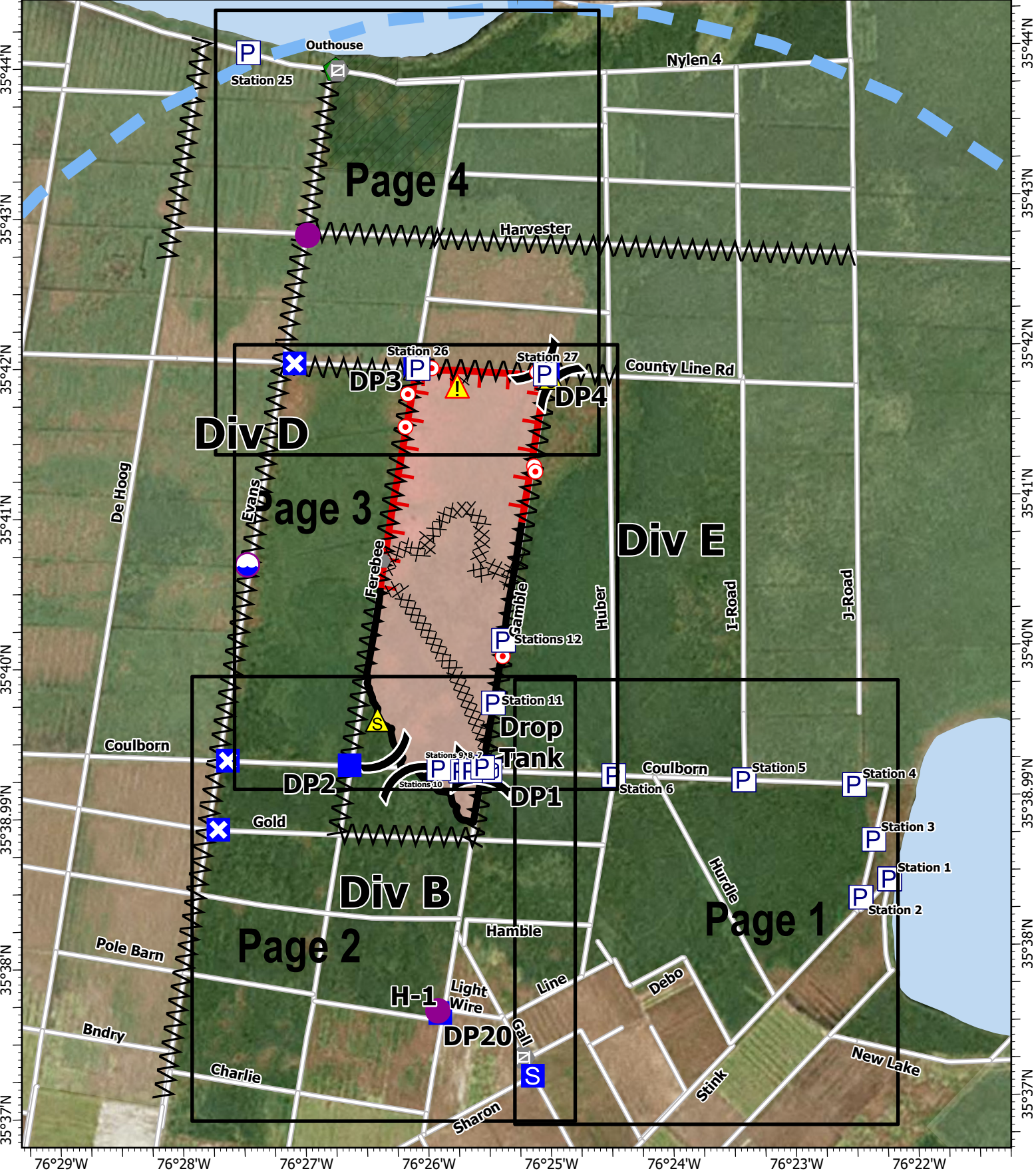


76°29'W 76°28'W 76°27'W 76°26'W 76°25'W 76°24'W 76°23'W 76°22'W 76°21.01'W



IAP
Ferebee
NCNCS-220039
1,938 acres at 6/26/2022 1700h

- | | | |
|-------------------------------|----------------------|-------------|
| Wildfire Daily Fire Perimeter | Division Break | Safety Zone |
| Contained | Drop Point | Hazard |
| Uncontained | Closure | Pump |
| Completed Dozer Line | Staging Area | Water Tank |
| Completed Fuel Break | Hot Spot - Spot Fire | USFWS |
| Temporary Flight Restriction | Rain Gauge | State Parks |
| Dip Site | Gate | Lakes |
| Helispot | Resource Location | Local Roads |

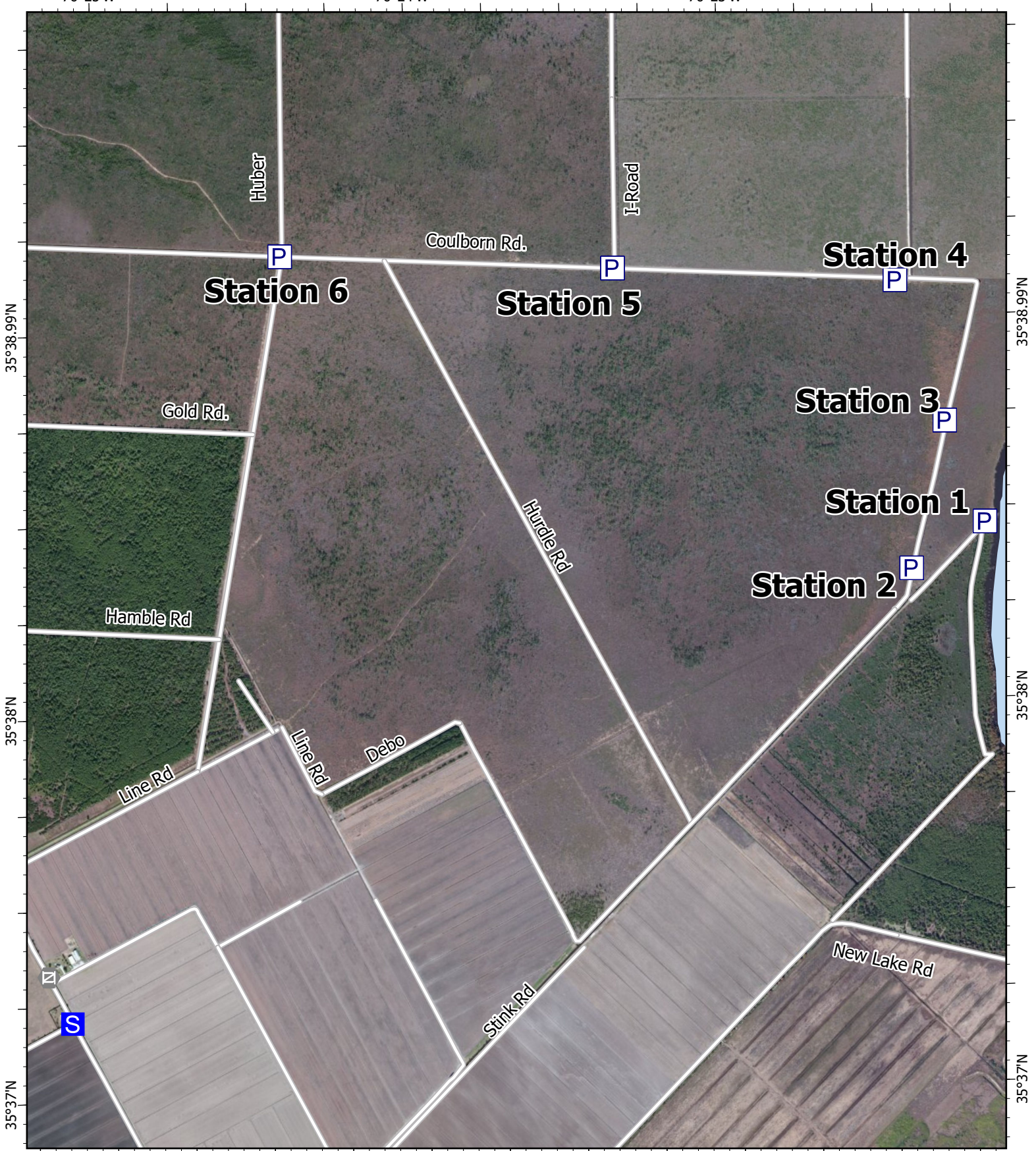
0 0.5 1 Miles

A. Lang
 7/2/2022 1535
 NAD 1983 NSRS2007 Datum

76°25'W

76°24'W

76°23'W



35°38.99'N

35°38.99'N

35°38'N

35°38'N

35°37'N

35°37'N

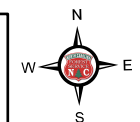
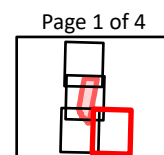
IAP

Ferebee
NCNCS-220039

1,938 acres at 6/26/2022 1700h

- S Staging Area
- ⊞ Gate
- P Pump
- USFWS
- Lake
- Local Roads

0 500 1000 2000 Feet



A.Lang
7/2/2022 1536
NAD 1983 NSRS2007 Datum

76°27'W

76°26'W

76°25'W

35°38.99'N

35°38.99'N

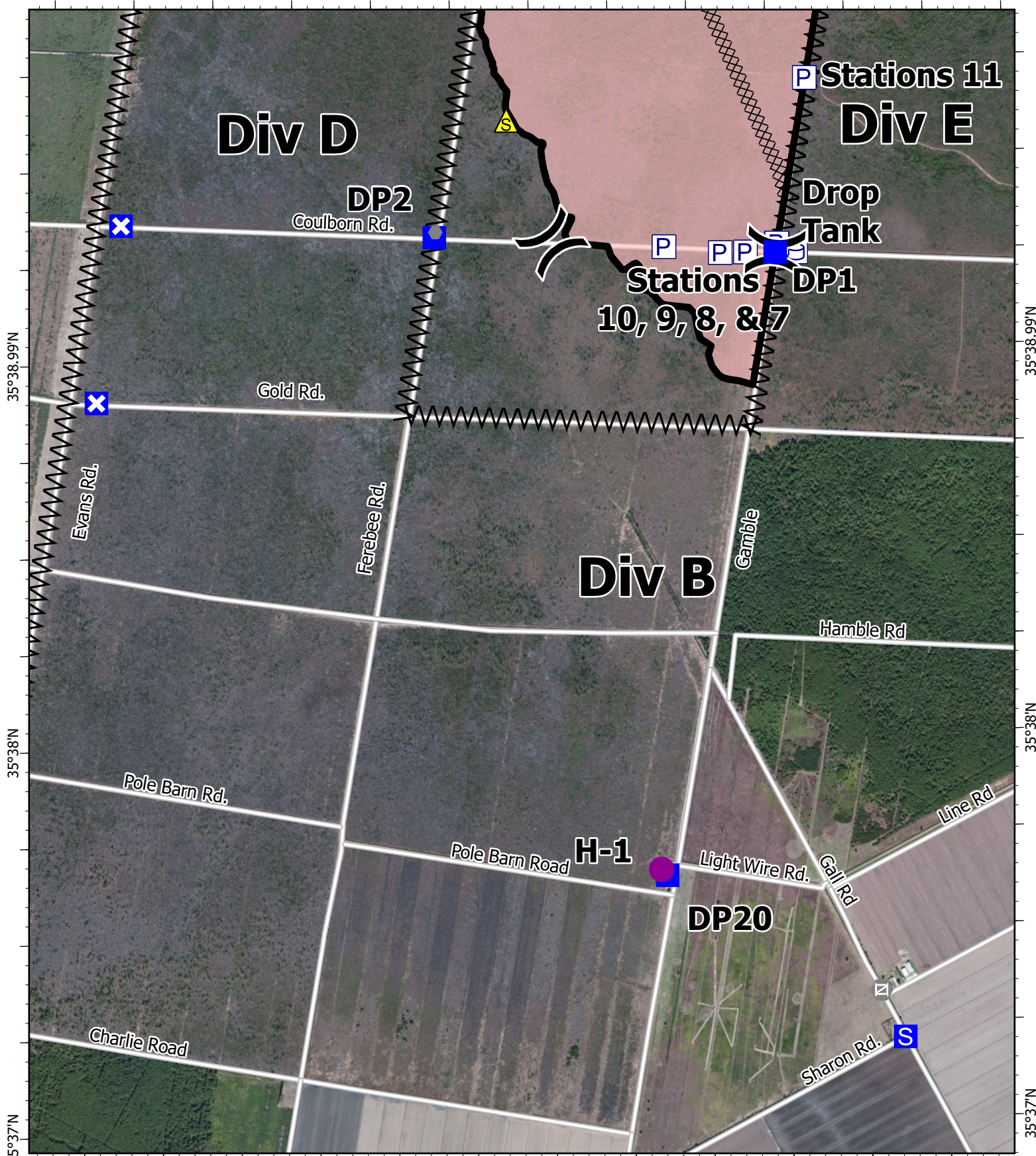
35°38'N

35°38'N

35°37'N

35°37'N

76°27'W 76°26'W 76°25'W

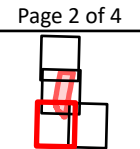


IAP

Ferebee NCNCS-220039

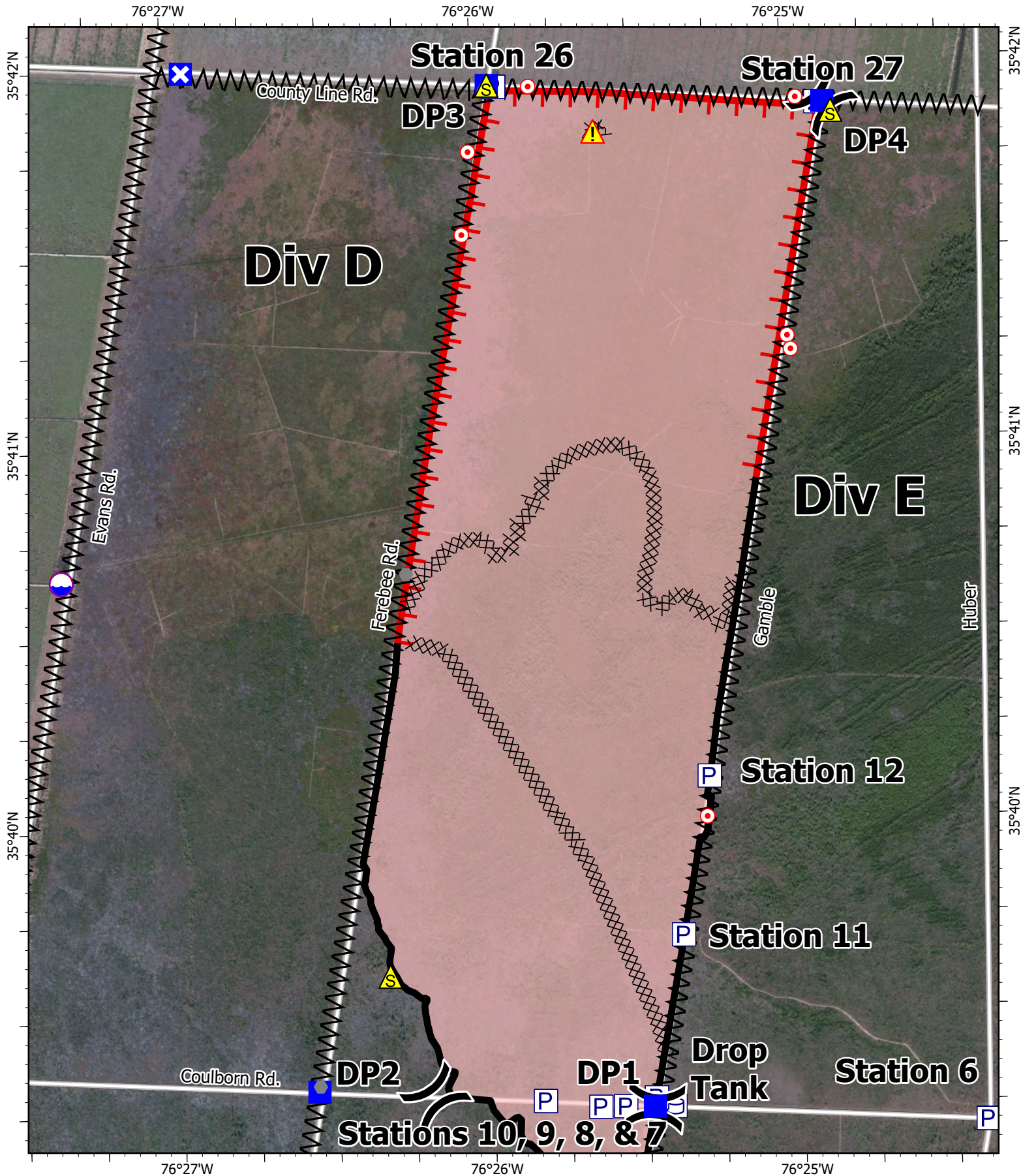
1,938 acres at 6/26/2022 1700h

- Wildfire Daily Fire Perimeter
- Contained
- Completed Dozer Line
- Completed Fuel Break
- Helispot
- () Division Break
- Drop Point
- ✕ Closure
- S Staging Area
- Rain Gauge
- Gate
- ▲ Safety Zone
- P Pump
- W Water Tank
- USFWS
- Local Roads



0 500 1000 2000 Feet

A.Lang
7/2/2022 1536
NAD 1983 NSRS2007 Datum



IAP

Ferebee
NCNCS-220039

1,938 acres at 6/26/2022 1700h

- | | | |
|-------------------------------|----------------------|-------------|
| Wildfire Daily Fire Perimeter | Division Break | Hazard |
| Contained | Drop Point | Pump |
| Uncontained | Closure | Water Tank |
| Completed Dozer Line | Hot Spot - Spot Fire | USFWS |
| Completed Fuel Break | Rain Gauge | Local Roads |
| Dip Site | Safety Zone | |

Page 3 of 4



IAP

Ferebee
NCNCS-220039

1,938 acres at 6/26/2022 1700h

- | | | |
|-------------------------------|----------------------|-------------|
| Wildfire Daily Fire Perimeter | Drop Point | Hazard |
| Uncontained | Closure | Pump |
| Completed Dozer Line | Hot Spot - Spot Fire | USFWS |
| Completed Fuel Break | Rain Gauge | State Parks |
| Temporary Flight Restriction | Gate | Lake |
| Helispot | Resource Location | Local Roads |
| Division Break | Safety Zone | |

Page 4 of 4

A. Lang
7/2/2022 1536
NAD 1983 NSRS2007 Datum