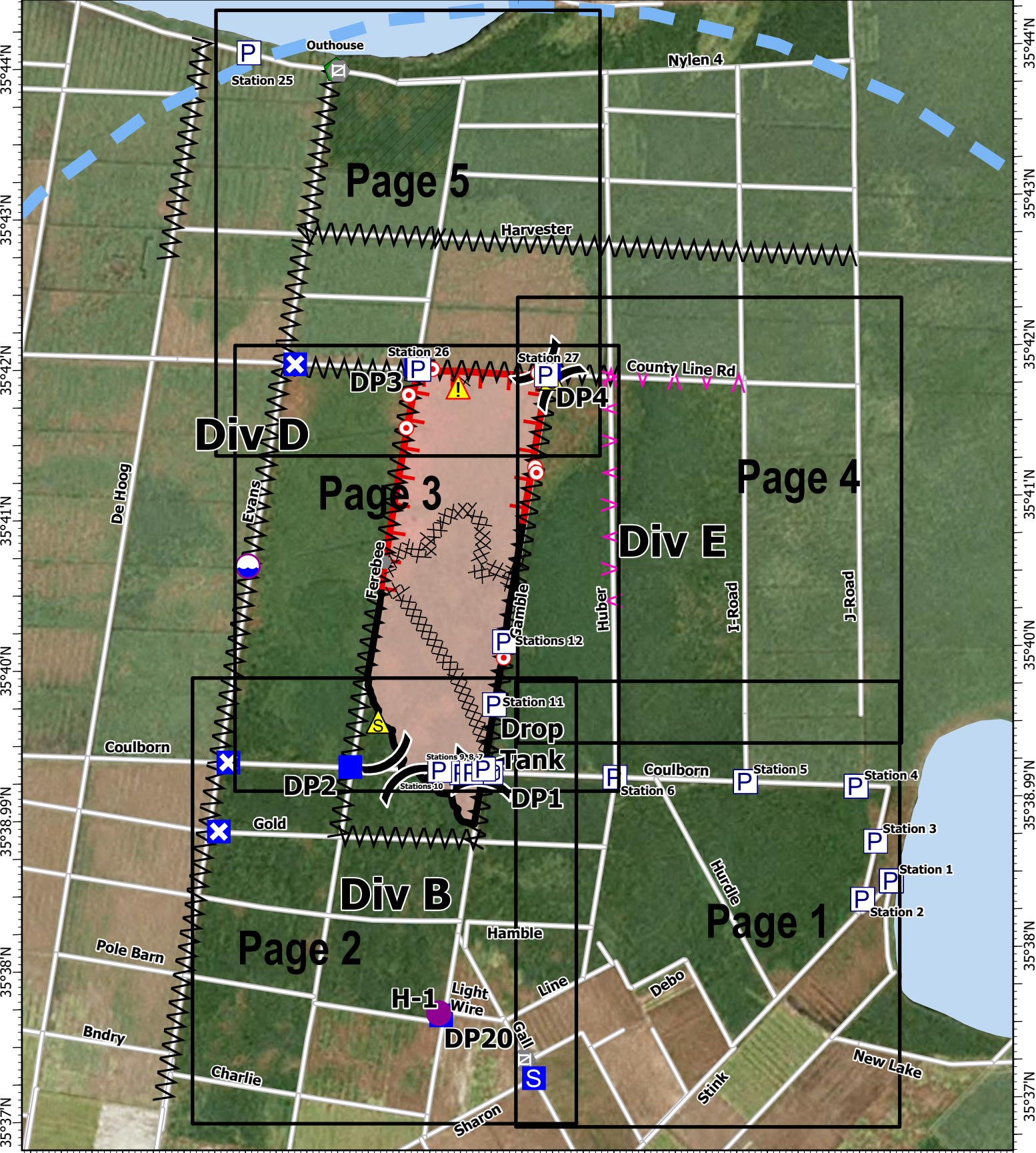





76°29'W 76°28'W 76°27'W 76°26'W 76°25'W 76°24'W 76°23'W 76°22'W 76°21.01'W



IAP
Ferebee
NCNCS-220039
7/4/2022
1,938 acres at 6/26/2022 1700h

- Wildfire Daily Fire Perimeter
- Contained
- Uncontained
- Completed Dozer Line
- Completed Fuel Break
- Planned Fuel Break
- Temporary Flight Restriction
- Dip Site
- Helispot
- Division Break
- Drop Point
- Closure
- Staging Area
- Hot Spot - Spot Fire
- Rain Gague
- Gate
- Resource Location
- Safety Zone
- Hazard
- Pump
- Water Tank
- USFWS
- State Parks
- Lakes
- Local Roads

0 0.5 1 Miles

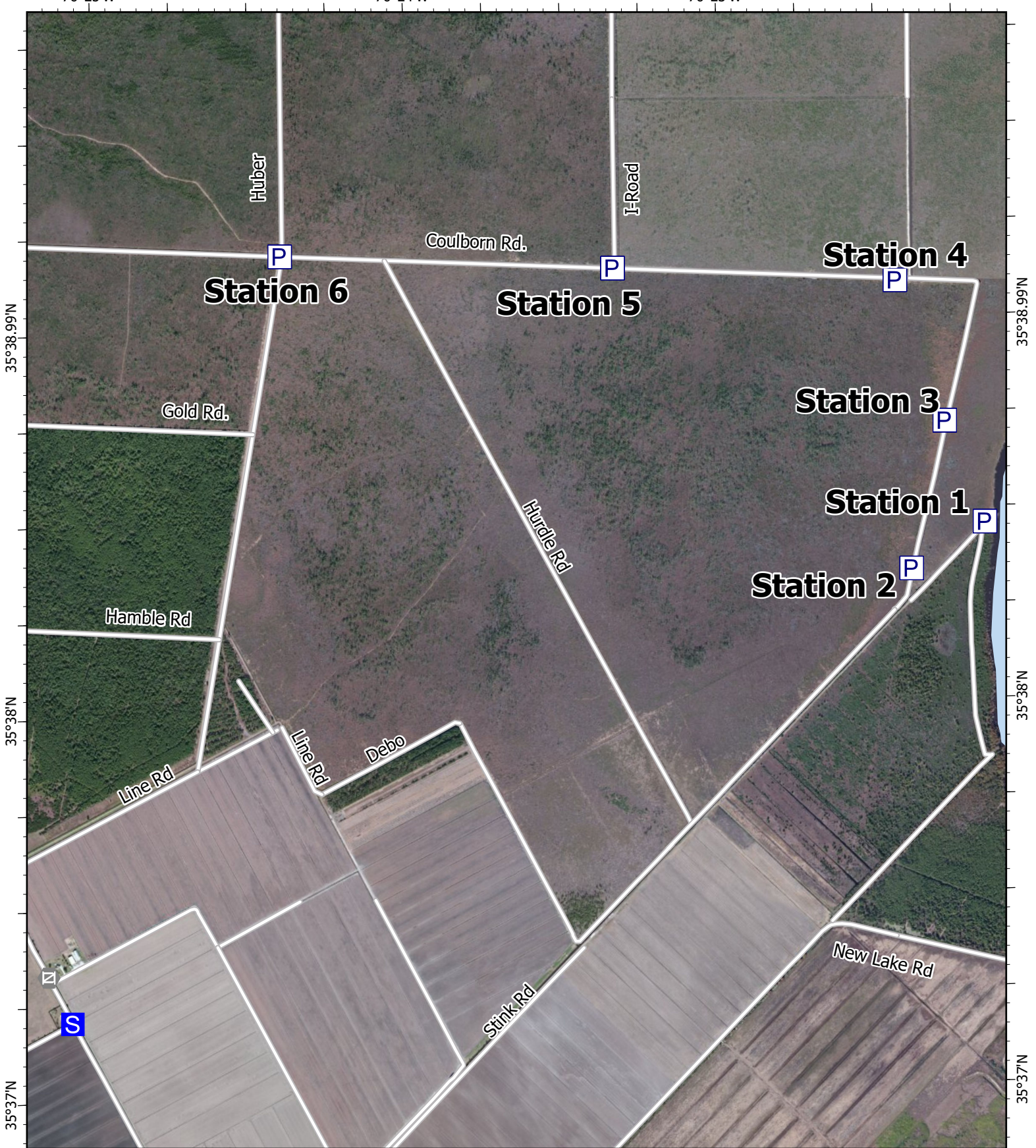




A. Lang
7/3/2022 1627
NAD 1983 NSRS2007 Datum

76°25'W

76°24'W

76°23'W



35°38.99'N

35°38.99'N

35°38'N

35°38'N

35°37'N

35°37'N

IAP

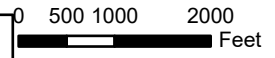
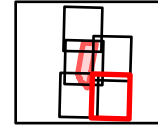
Ferebee
NCNCS-220039

7/4/2022

1,938 acres at 6/26/2022 1700h

- S Staging Area
- Gate
- P Pump
- USFWS
- Lake
- Local Roads

Page 1 of 5



A.Lang
7/3/2022 1647
NAD 1983 NSRS2007 Datum

76°27'W

76°26'W

76°25'W

35°38.99'N

35°38.99'N

35°38'N

35°38'N

35°37'N

35°37'N

76°27'W

76°26'W

76°25'W

Div D

Stations 11
Div E

DP2
Coulborn Rd.

Drop Tank

Stations DP1
10, 9, 8, & 7

Gold Rd.

Evans Rd.

Ferebee Rd.

Div B

Gamble

Hamble Rd

Pole Barn Rd.

Pole Barn Road H-1

DP20

Light Wire Rd.

Gall Rd

Line Rd

Charlie Road

Sharon Rd.

IAP

Ferebee
NCNCS-220039
7/4/2022

1,938 acres at 6/26/2022 1700h

Wildfire Daily Fire Perimeter

Contained

Completed Dozer Line

Completed Fuel Break

Helispot

Division Break

Drop Point

Closure

Staging Area

Rain Gauge

Gate

Safety Zone

Pump

Water Tank

USFWS

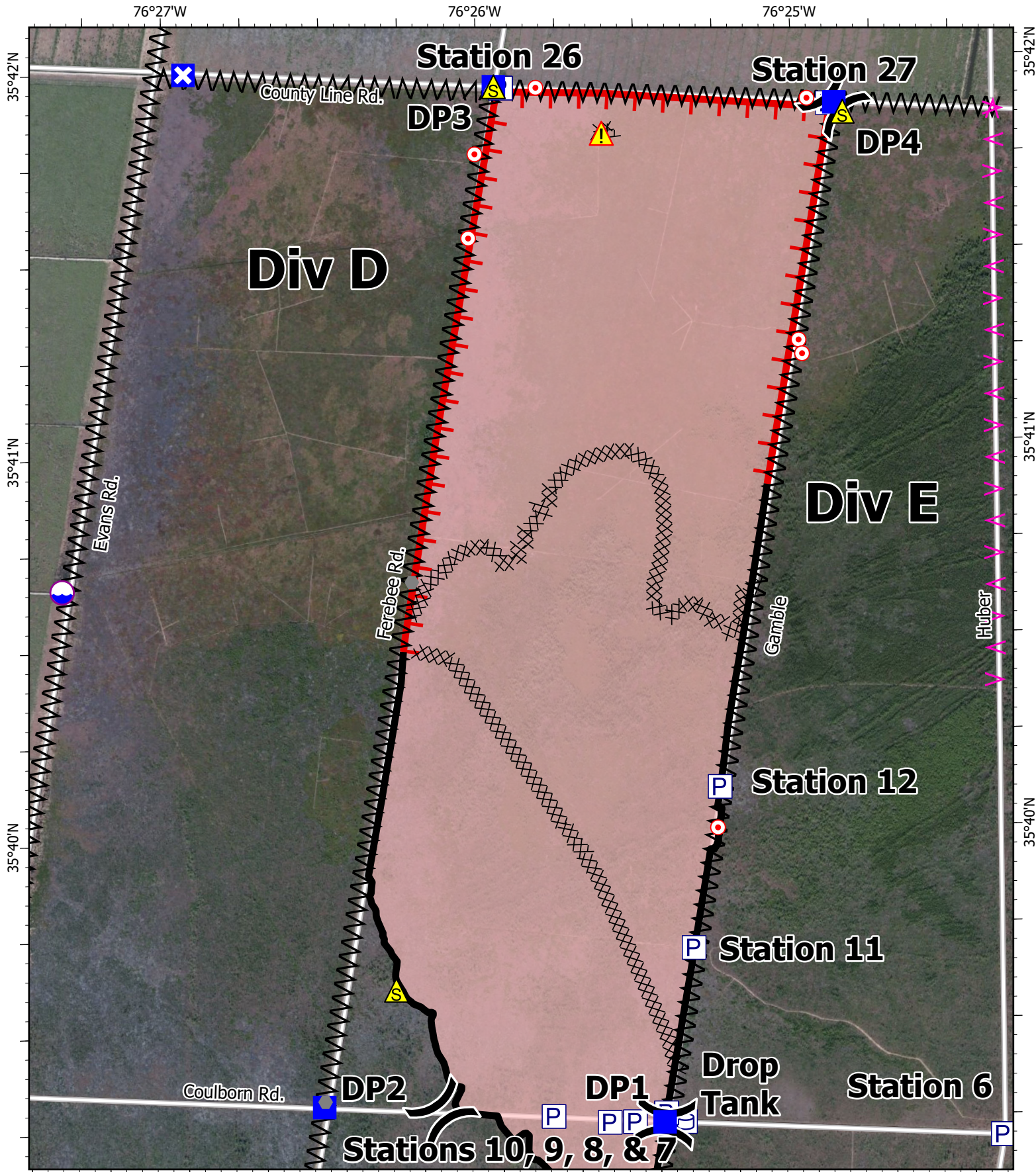
Local Roads

Page 2 of 5

0 500 1000 2000 Feet



A.Lang
7/3/2022 1648
NAD 1983 NSRS2007 Datum



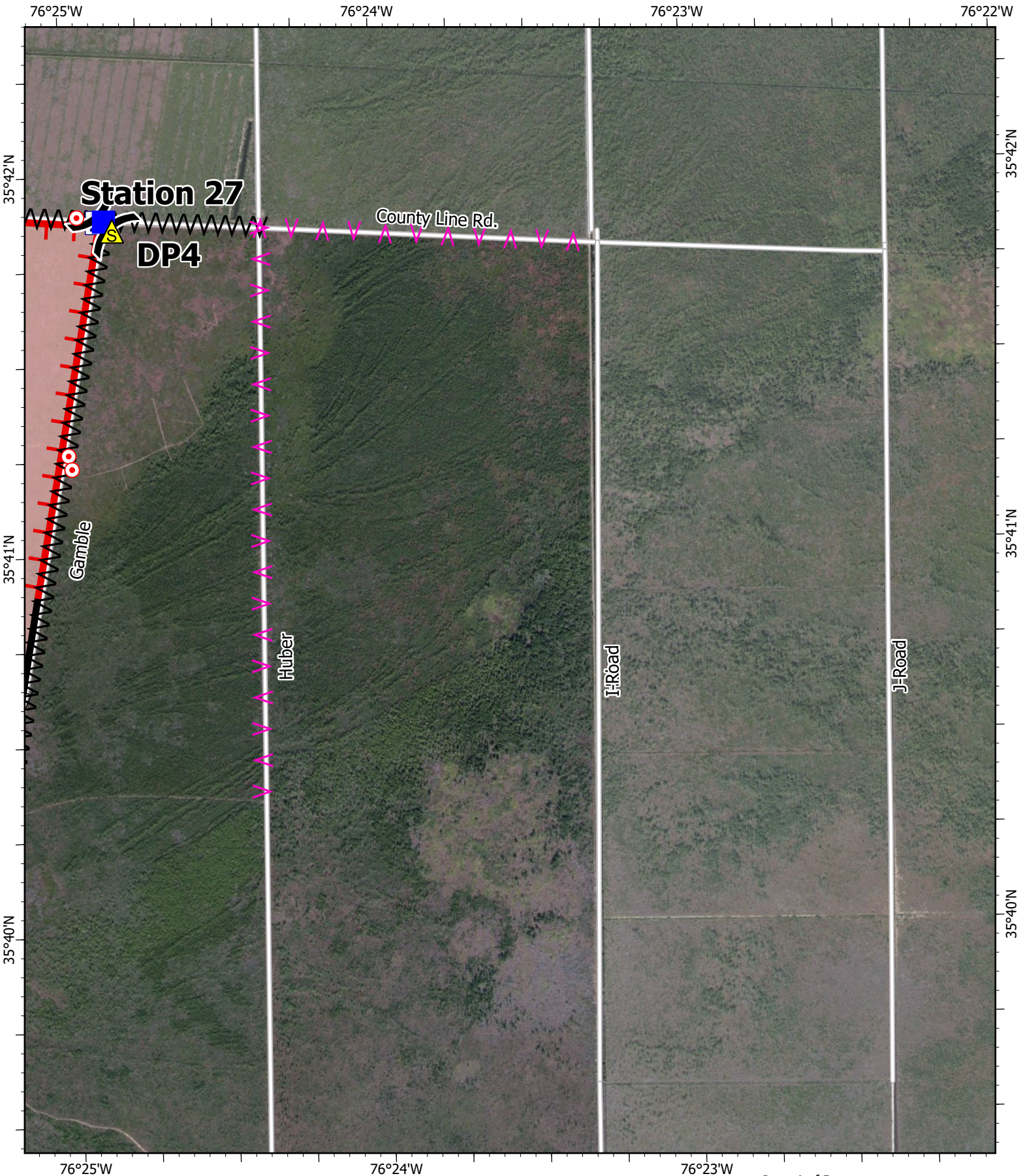
IAP

Ferebee
 NCNCS-220039
 7/4/2022
 1,938 acres at 6/26/2022 1700h

- | | | |
|-------------------------------|----------------------|-------------|
| Wildfire Daily Fire Perimeter | Dip Site | Safety Zone |
| Contained | Division Break | Hazard |
| Uncontained | Drop Point | Pump |
| Completed Dozer Line | Closure | Water Tank |
| Completed Fuel Break | Hot Spot - Spot Fire | USFWS |
| Planned Fuel Break | Rain Gage | Local Roads |

76°25'W
 Page 3 of 5

A. Lang
 7/3/2022 1648
 NAD 1983 NSRS2007 Datum



IAP
 Ferebee
 NCNCS-220039
 7/4/2022
 1,938 acres at 6/26/2022 1700h

- ▬ Wildfire Daily Fire Perimeter
- ▬ Contained
- ▬ Uncontained
- ⊗ Completed Dozer Line
- ⌞ Completed Fuel Break
- ⌞ Planned Fuel Break
- ⌞ Division Break
- Drop Point
- ⊙ Hot Spot - Spot Fire
- ▲ Safety Zone
- P Pump
- USFWS
- Local Roads

Page 4 of 5

A.Lang
 7/3/2022 1648
 NAD 1983 NSRS2007 Datum



IAP
Ferebee
NCNCS-220039
7/4/2022
 1,938 acres at 6/26/2022 1700h

- | | | |
|-------------------------------|----------------------|-------------|
| Wildfire Daily Fire Perimeter | Closure | Pump |
| Uncontained | Hot Spot - Spot Fire | USFWS |
| Completed Dozer Line | Rain Gauge | State Parks |
| Completed Fuel Break | Gate | Lake |
| Temporary Flight Restriction | Resource Location | Local Roads |
| Division Break | Safety Zone | |
| Drop Point | Hazard | |

Page 5 of 5

A. Lang
 7/3/2022 1648
 NAD 1983 NSRS2007 Datum