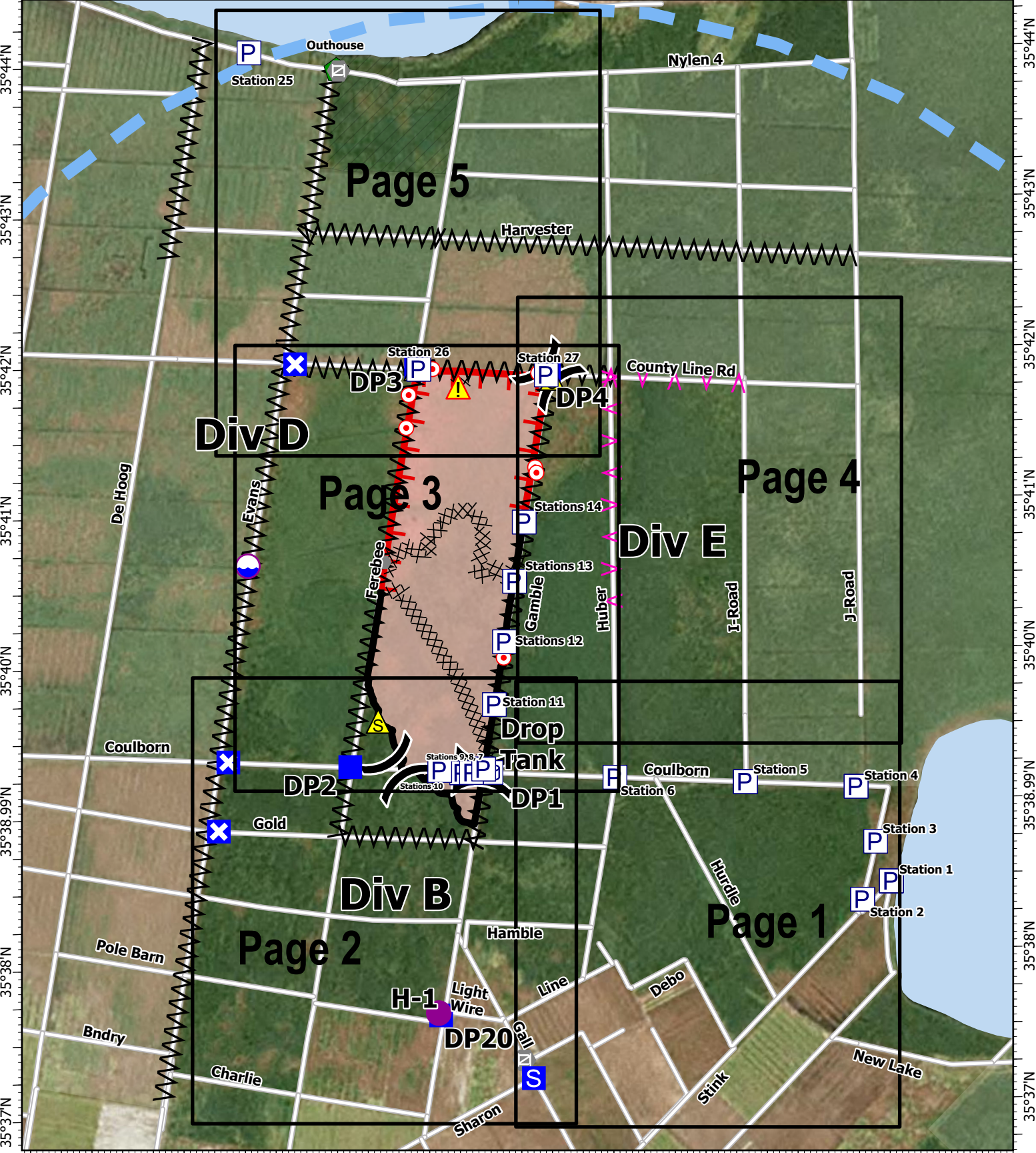


76°29'W 76°28'W 76°27'W 76°26'W 76°25'W 76°24'W 76°23'W 76°22'W 76°21.01'W



IAP
Ferebee
NCNCS-220039
7/5/2022
1,938 acres at 6/26/2022 1700h

- Wildfire Daily Fire Perimeter
- Contained
- Uncontained
- Completed Dozer Line
- Completed Fuel Break
- Planned Fuel Break
- Temporary Flight Restriction
- Dip Site
- Helispot
- Division Break
- Drop Point
- Closure
- Staging Area
- Hot Spot - Spot Fire
- Rain Gauge
- Gate
- Resource Location
- Safety Zone
- Hazard
- Pump
- Water Tank
- USFWS
- State Parks
- Lakes
- Local Roads

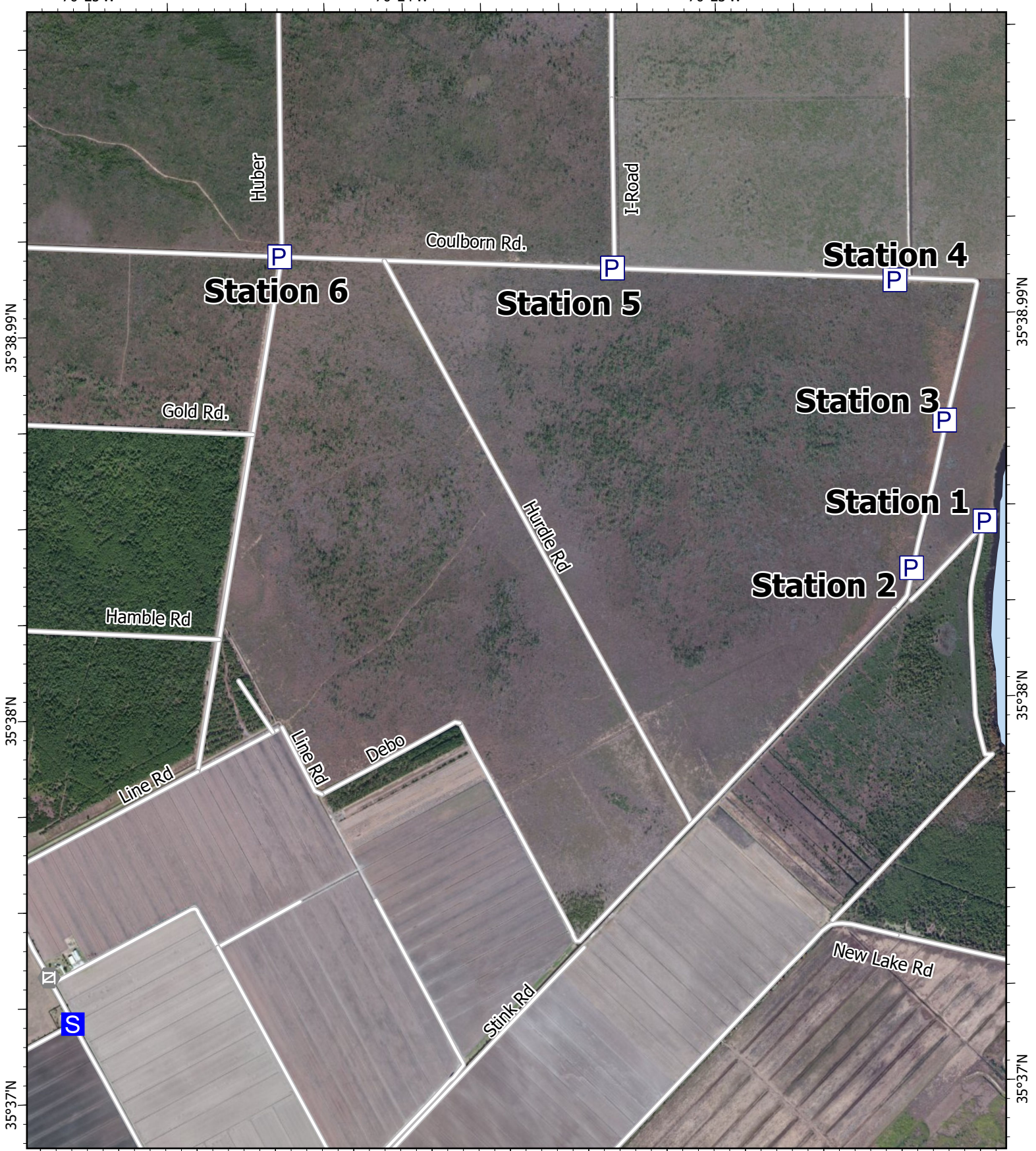
0 0.5 1 Miles

A. Lang
7/4/2022 1646
NAD 1983 NSRS2007 Datum

76°25'W

76°24'W

76°23'W



35°38.99'N

35°38.99'N

35°38'N

35°38'N

35°37'N

35°37'N

76°25'W

76°24'W

76°23'W

IAP

Ferebee

NCNCS-220039

7/5/2022

1,938 acres at 6/26/2022 1700h



Staging Area



Gate



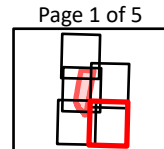
Pump

USFWS

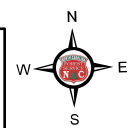
Lake

Local Roads

0 500 1000 2000 Feet



Page 1 of 5



A.Lang
7/4/2022 1645
NAD 1983 NSRS2007 Datum

76°27'W

76°26'W

76°25'W

35°38.99'N

35°38.99'N

35°38'N

35°38'N

35°37'N

35°37'N

76°27'W

76°26'W

76°25'W

Div D

Stations 11
Div E

DP2
Coulborn Rd.

Drop Tank

Stations DP1
10, 9, 8, & 7

Gold Rd.

Evans Rd.

Ferebee Rd.

Gamble

Div B

Hamble Rd

Pole Barn Rd.

Pole Barn Road H-1

DP20

Light Wire Rd. Gall Rd.

Line Rd

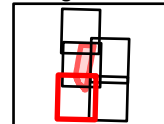
Charlie Road

Sharon Rd.

- ▭ Wildfire Daily Fire Perimeter
- Contained
- Completed Dozer Line
- Completed Fuel Break
- Helispot
-) Division Break
- Drop Point
- ✕ Closure
- S Staging Area
- P Pump
- P Water Tank
- USFWS
- Local Roads
- Rain Gauge
- X Gate
- ⚠ Safety Zone

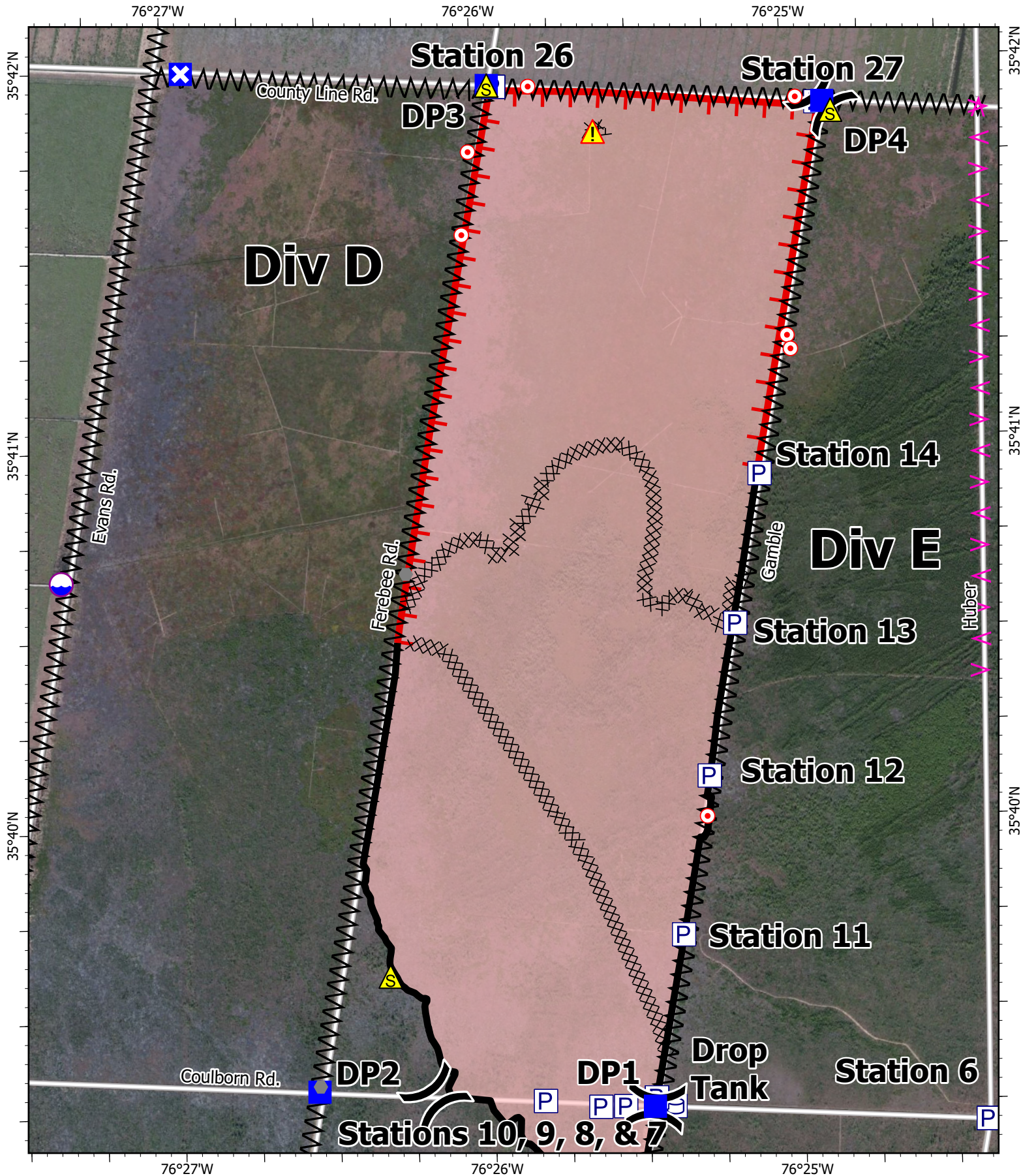
0 500 1000 2000 Feet

Page 2 of 5



A.Lang
7/4/2022 1645
NAD 1983 NSRS2007 Datum

IAP
Ferebee
NCNCS-220039
7/5/2022
1,938 acres at 6/26/2022 1700h



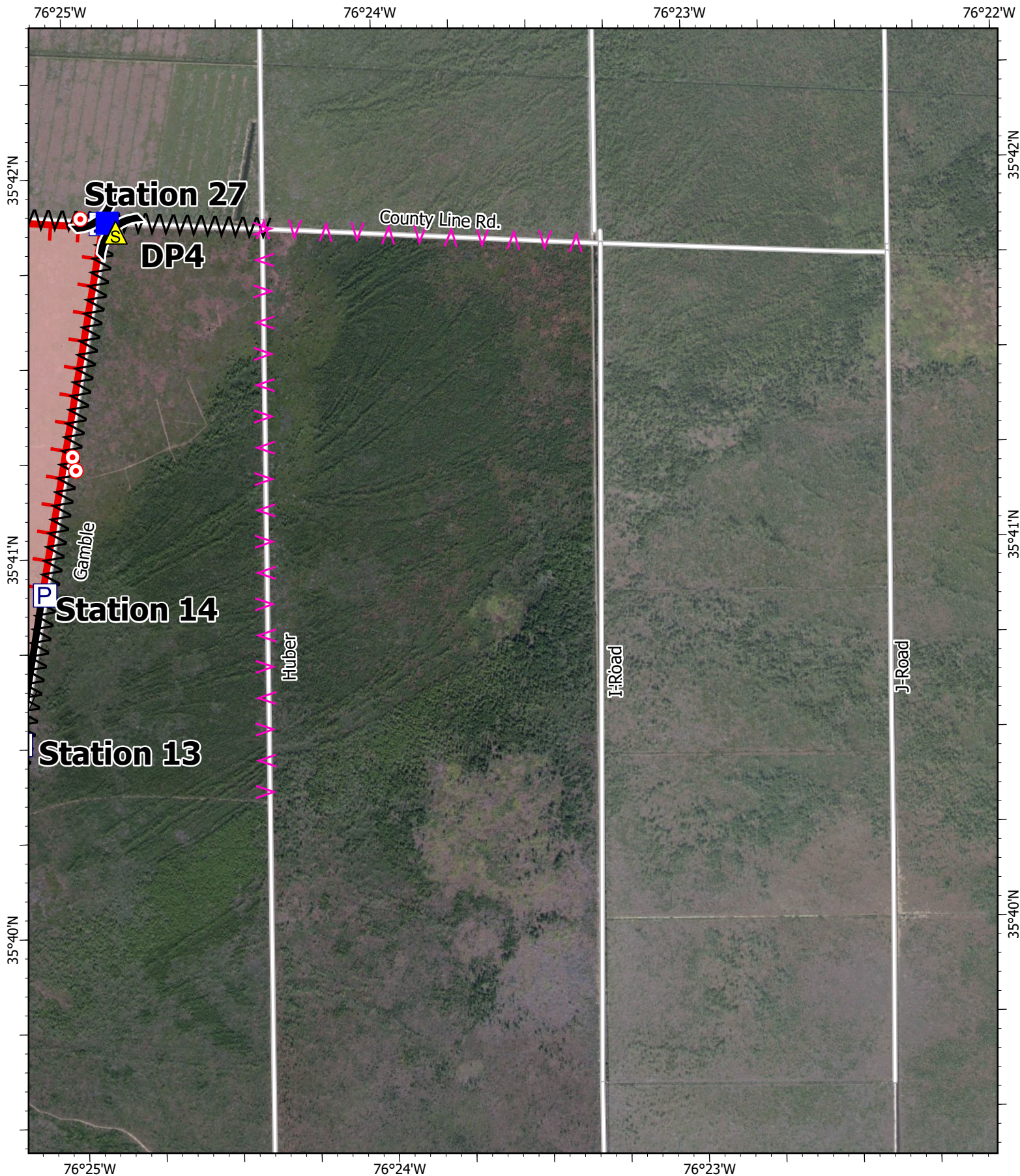
IAP
Ferebee
NCNCS-220039
7/5/2022
 1,938 acres at 6/26/2022 1700h

- | | | |
|-------------------------------|----------------------|-------------|
| Wildfire Daily Fire Perimeter | Dip Site | Safety Zone |
| Contained | Division Break | Hazard |
| Uncontained | Drop Point | Pump |
| Completed Dozer Line | Closure | Water Tank |
| Completed Fuel Break | Hot Spot - Spot Fire | USFWS |
| Planned Fuel Break | Rain Gage | Local Roads |

0 500 1000 2000 Feet

Page 3 of 5

A.Lang
 7/4/2022 1645
 NAD 1983 NSRS2007 Datum



IAP
 Ferebee
 NCNCS-220039
 7/5/2022
 1,938 acres at 6/26/2022 1700h

- | | |
|-------------------------------|----------------------|
| Wildfire Daily Fire Perimeter | Drop Point |
| Contained | Hot Spot - Spot Fire |
| Uncontained | Safety Zone |
| Completed Dozer Line | Pump |
| Completed Fuel Break | USFWS |
| Planned Fuel Break | Local Roads |
| Division Break | |

Page 4 of 5

0 500 1000 2000 Feet

A.Lang
 7/4/2022 1645
 NAD 1983 NSRS2007 Datum



76°27'W

76°26'W

76°25'W

35°44'N

35°44'N

35°43'N

35°43'N

35°42'N

35°42'N

76°27'W

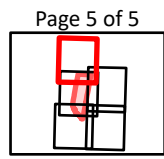
76°26'W

76°25'W

IAP
Ferebee
NCNCS-220039
7/5/2022
1,938 acres at 6/26/2022 1700h

- | | | |
|-------------------------------|----------------------|-------------|
| Wildfire Daily Fire Perimeter | Closure | Pump |
| Uncontained | Hot Spot - Spot Fire | USFWS |
| Completed Dozer Line | Rain Gauge | State Parks |
| Completed Fuel Break | Gate | Lake |
| Temporary Flight Restriction | Resource Location | Local Roads |
| Division Break | Safety Zone | |
| Drop Point | Hazard | |

0 500 1000 2000 Feet



A. Lang
 7/4/2022 1645
 NAD 1983 NSRS2007 Datum

Page 5 of 5